

# CAPITAL

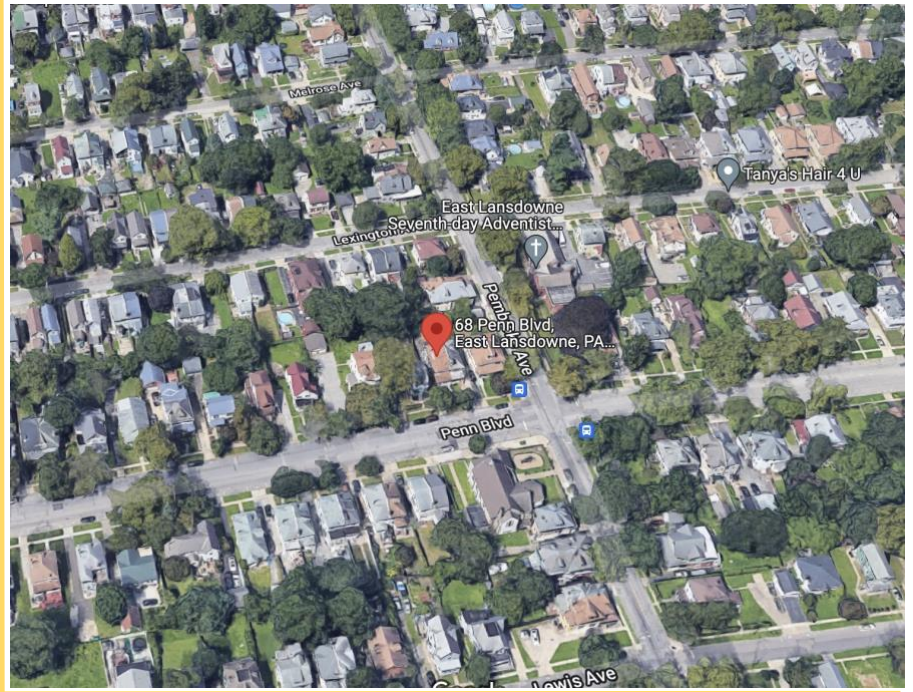
Commercial Real Estate Group

610-359-9700

www.CapitalComRe.com

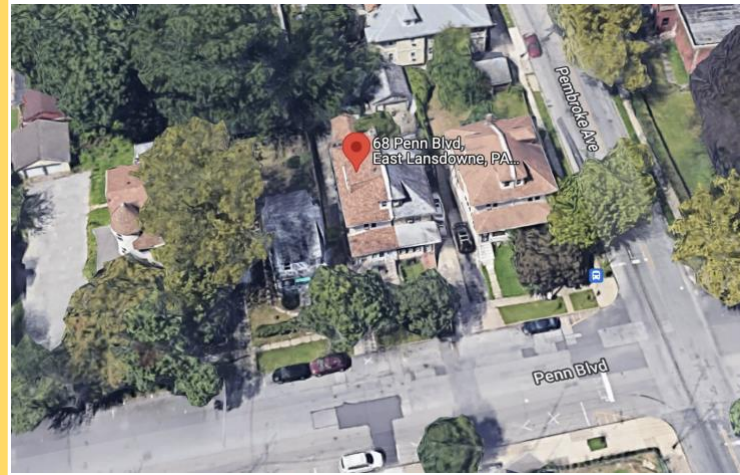
## \*4-UNIT MULTIFAMILY FOR SALE\*

● 68 Penn Blvd, Lansdowne, PA 19050



### PROPERTY HIGHLIGHTS:

- ✓ Fully-Occupied, 4-Unit Multifamily Apartment For Sale in East Lansdowne
- ✓ The Building Consists of Four, 1-Unit Apartments and a Rented Garage.
- ✓ All Tenants are Current on Rent and Have been Current Through 2021.
- ✓ The Building Has Private Parking in Rear of Building



**SALE PRICE: \$425,000.00**



Christopher Armas  
561-945-2346  
Armas888@gmail.com

### AGENT CONTACT

www.capitalcomre.com  
3748 West Chester Pike Newtown Square, PA 19073 \* Phone: 561-945-2346 \* Fax: 610-359-9750

The information above has been obtained from sources believed reliable. While we do not doubt its accuracy, we have not verified it and make no guarantee, warranty or representation about it. It is Buyer/Lessee responsibility to independently confirm its accuracy and completeness. This is not intended to solicit another Broker's listing.