

EXCLUSIVE FOR LEASE

GREAT SPACE FOR

SPACIOUS 3,200 SF WAREHOUSE / 2-MINUTE WALK TO QUEENSBORO PLAZA / INCLUDES TWO DEDICATED PARKING SPACES AT NO EXTRA COST

40-29 27TH STREET, LONG ISLAND CITY, NY 11101

- LIGHT MANUFACTURING
- CONTRACTORS
- WAREHOUSING
- LOGISTICS
- SHOWROOM



NEIGHBORHOOD

LONG ISLAND CITY, QUEENS

CONDITION

FULL BUILD-OUT + 2 PARKING SPACES

STATUS

VACANT - AVAILABLE IMMEDIATELY

DISCOVER PRIME WAREHOUSE SPACE IN LONG ISLAND CITY!

SPANNING 3,200 SF, THIS CENTRALLY LOCATED WAREHOUSE IS JUST 1.5 BLOCKS FROM QUEENSBORO PLAZA AND MAJOR SUBWAY LINES—MAKING ACCESSIBILITY A BREEZE.

KEY FEATURES

- DRIVE-IN GATE FROM 27TH STREET FOR EASY LOADING
- PEDESTRIAN DOOR ACCESS THROUGH AN ADJACENT PARKING LOT
- FLEXIBLE SPACE: SHELVING AND RACKS IN PLACE (REMOVABLE UPON REQUEST)
- TWO DEDICATED PARKING SPOTS INCLUDED, WITH ADDITIONAL SPOTS AVAILABLE AT \$250/MONTH PER VEHICLE

PROPERTY SPECS

TOTAL PROPERTY SF: 3,200 SF
STORIES: 2 FLOORS
ZONING: M1-1
LOADING: DRIVE-IN GATE

ACCESSIBILITY



EASY ACCESS TO QUEENSBORO BRIDGE, MANHATTAN AND MAJOR ROADWAYS

**CONTACT
EXCLUSIVE AGENT**

EITAN HAKAMI

718-786-5050 x 215
ehakami@greiner-maltz.com

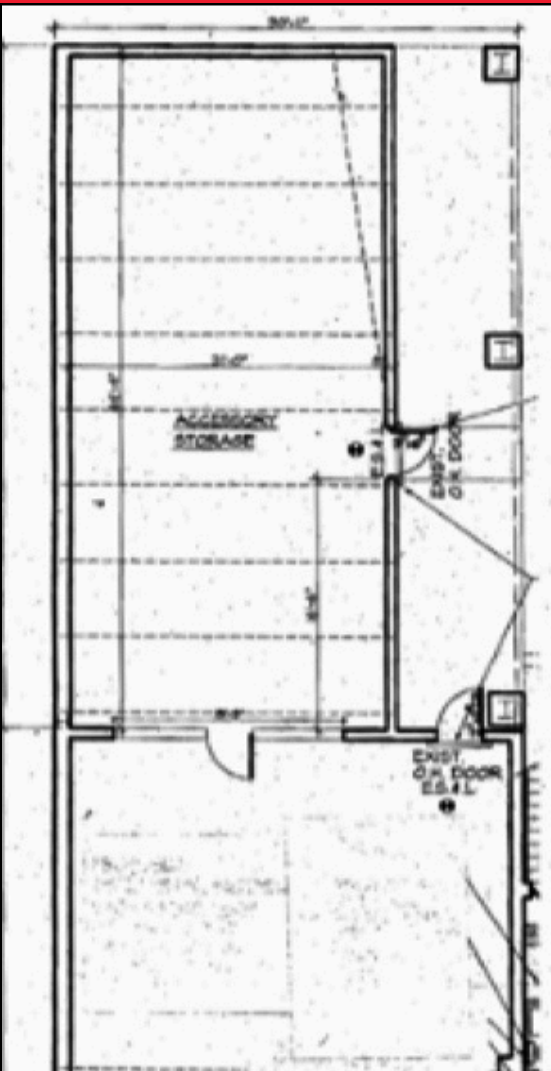
GREINER-MALTZ
REAL ESTATE

24-09 38TH AVENUE, LONG ISLAND CITY, NY 11101 | 1-718-786-5050 | GREINERMALTZ.COM | CREATING OPPORTUNITIES TOGETHER

All information is from sources deemed reliable and is submitted subject to errors, omission, changes of price or other conditions, prior sale, rent and withdrawal without notice.

EXCLUSIVE FOR LEASE

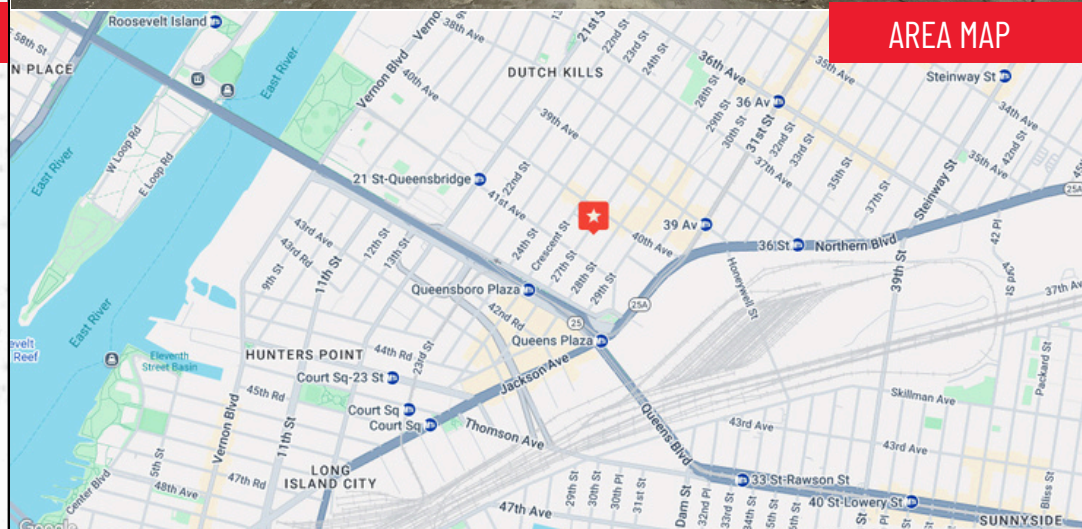
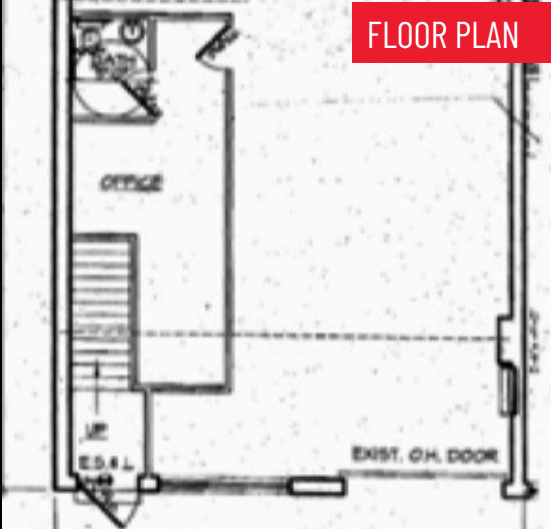
40-29 27TH STREET, LONG ISLAND CITY, NY 11101



FLOOR PLAN



INTERIOR



AREA MAP

CONTACT
EXCLUSIVE AGENT

EITAN HAKAMI
718-786-5050 x 215
ehakami@greiner-maltz.com

GREINER-MALTZ
REAL ESTATE

24-09 38TH AVENUE, LONG ISLAND CITY, NY 11101 | 1-718-786-5050 | GREINERMALTZ.COM | CREATING OPPORTUNITIES TOGETHER

All information is from sources deemed reliable and is submitted subject to errors, omission, changes of price or other conditions, prior sale, rent and withdrawal without notice.