

203 - 6678 152ND STREET, SURREY
BRAND NEW OFFICE AT HYLAND SQUARE

**FOR
SALE**



WILLIAM | WRIGHT

JOSH JAWANDA
PERSONAL REAL ESTATE CORPORATION
josh@williamwright.ca
604.545.0636

#203
6678 152ND STREET
SURREY

Welcome to Hyland Square, a contemporary development located in the vibrant city of Surrey. This modern space offers high-end finishes and amenities, providing a professional and sophisticated environment for businesses looking to establish or expand their presence. Situated in a prime location, this office unit is surrounded by various amenities and enjoys excellent connectivity, making it an ideal choice for discerning professionals.



Central Location



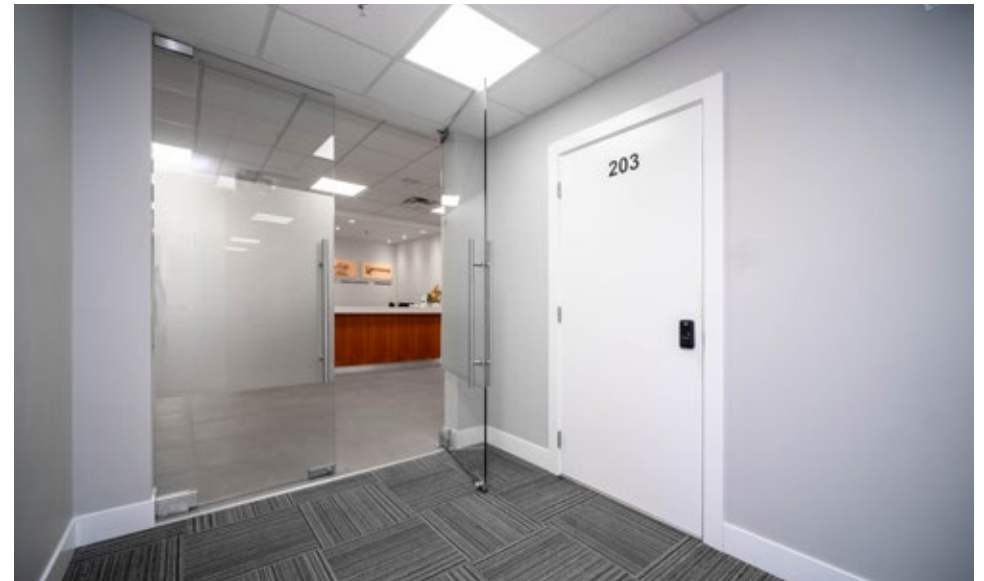
Modern Finishes



Ample Parking



Amenity Rich Location





SIZE

+/- 502 SQFT

ZONING

CD

STRATA FEES

\$291.00

PID

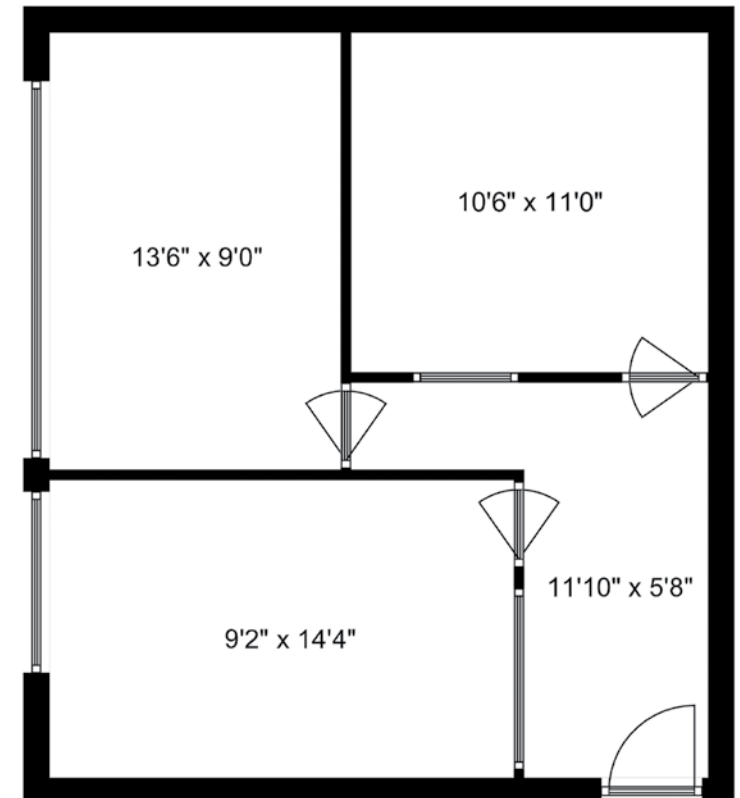
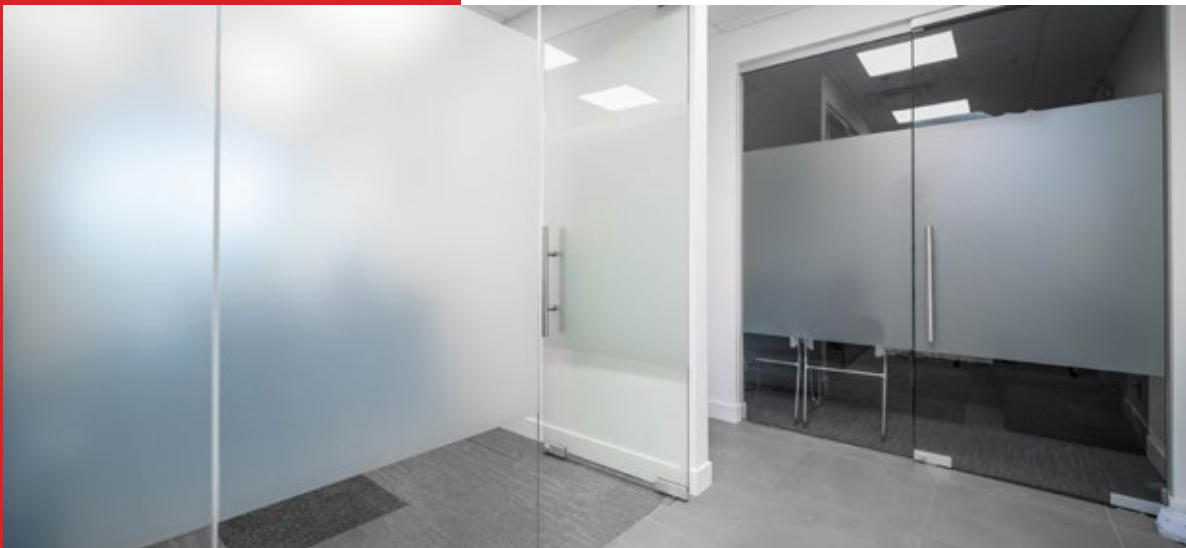
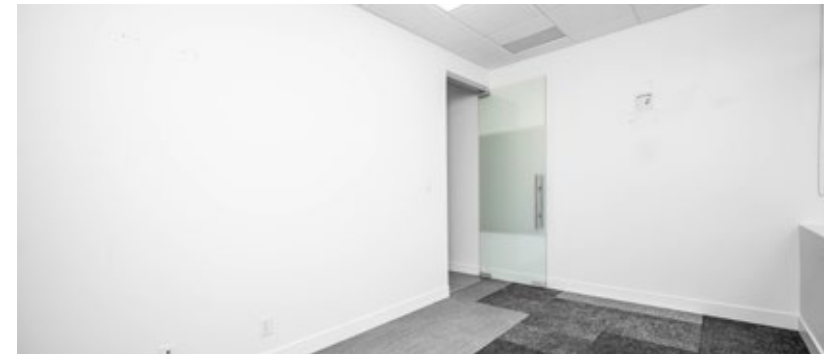
030-523-800

LEGAL DESCRIPTION

STRATA LOT 19, PLAN EPS4284, SECTION 14, TOWNSHIP 2, NEW WESTMINSTER LAND DISTRICT, TOGETHER WITH AN INTEREST IN THE COMMON PROPERTY IN PROPORTION TO THE UNIT ENTITLEMENT OF THE STRATA LOT AS SHOWN ON FORM V

PRICE

\$596,878.00



Disclaimer: Measurements are approximate and shall be verified by the Tenant if deemed important.



LOCATION

Situated along 152nd Street, Hyland Square is one of the most central Business Parks located in Surrey. Its convenient location provides easy access to the Lower Mainland via major highways and arterial roads. The space makes it easy for your clients, customers, and workforce to get to you. With the completion of the future Surrey Langley SkyTrain extension in 2028, including a station at 152nd Street/Fraser Highway, Hyland Square will be one of the most accessible industrial developments in the area.

FOR MORE INFORMATION CONTACT

JOSH JAWANDA
 PERSONAL REAL ESTATE CORPORATION
josh@williamwright.ca
 604.545.0636