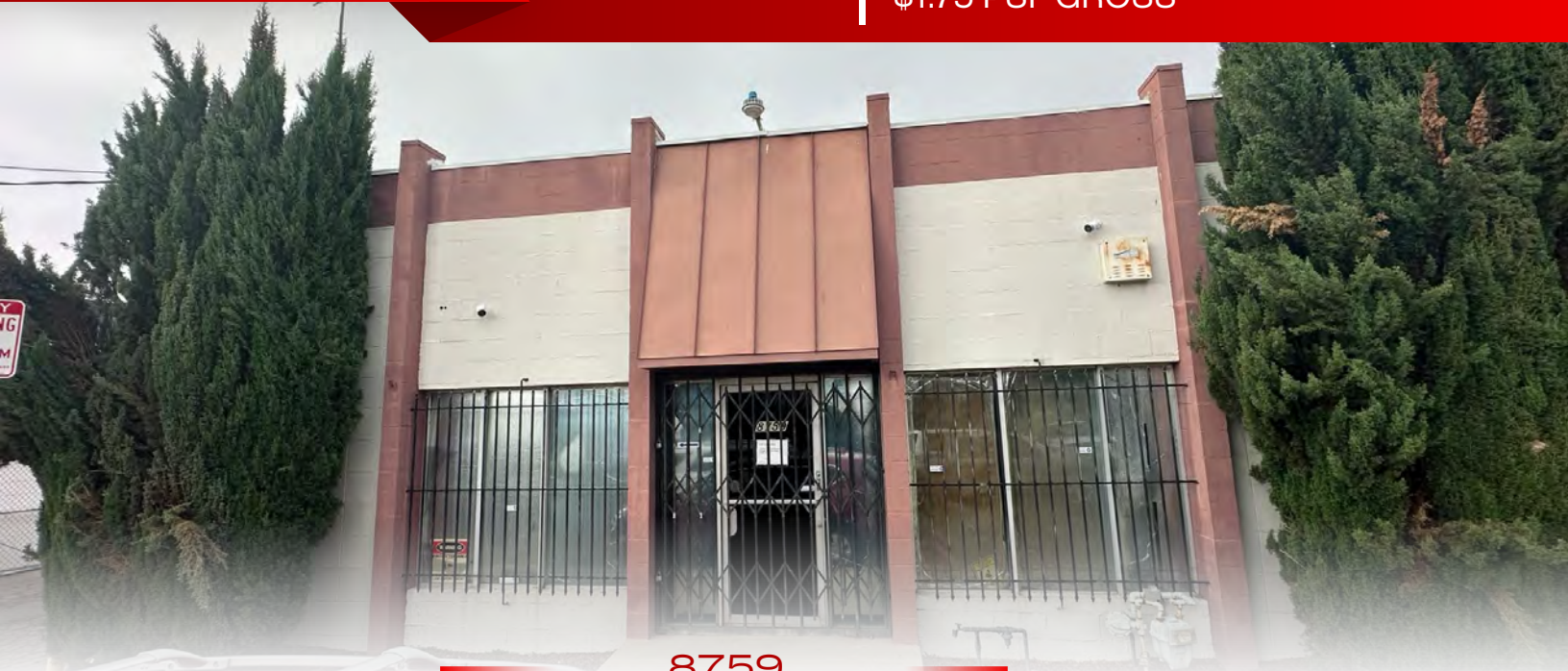


FOR LEASE

5,000 SF

FREESTANDING INDUSTRIAL BUILDING
\$1.75 PSF GROSS



8759

REMMET AVENUE

CANOGA PARK, CA

PROPERTY HIGHLIGHTS



HEAVY POWER
600 AMPS | 480 VOLT



FULLY AIR-CONDITIONED



AVAILABLE FOR
IMMEDIATE OCCUPANCY



PRIVATE/FENCED YARD



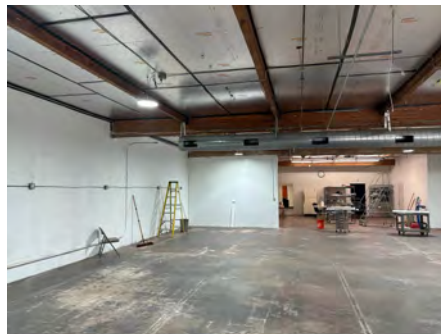
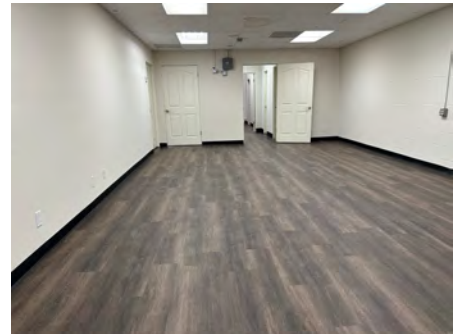
FUNCTIONAL OFFICE LAYOUT



10' WAREHOUSE CLEARANCE



MR2 ZONED



spectrumcre.com | 818.252.9900

SPECTRUM
COMMERCIAL REAL ESTATE, INC.



RON KASSAN

Executive Vice President
818.512.5001
ron@availablewarehouses.com
CA DRE Lic. #01063078



ART MINASSIAN

Senior Vice President
818.634.3722
art@availablewarehouses.com
CA DRE Lic. #02026662

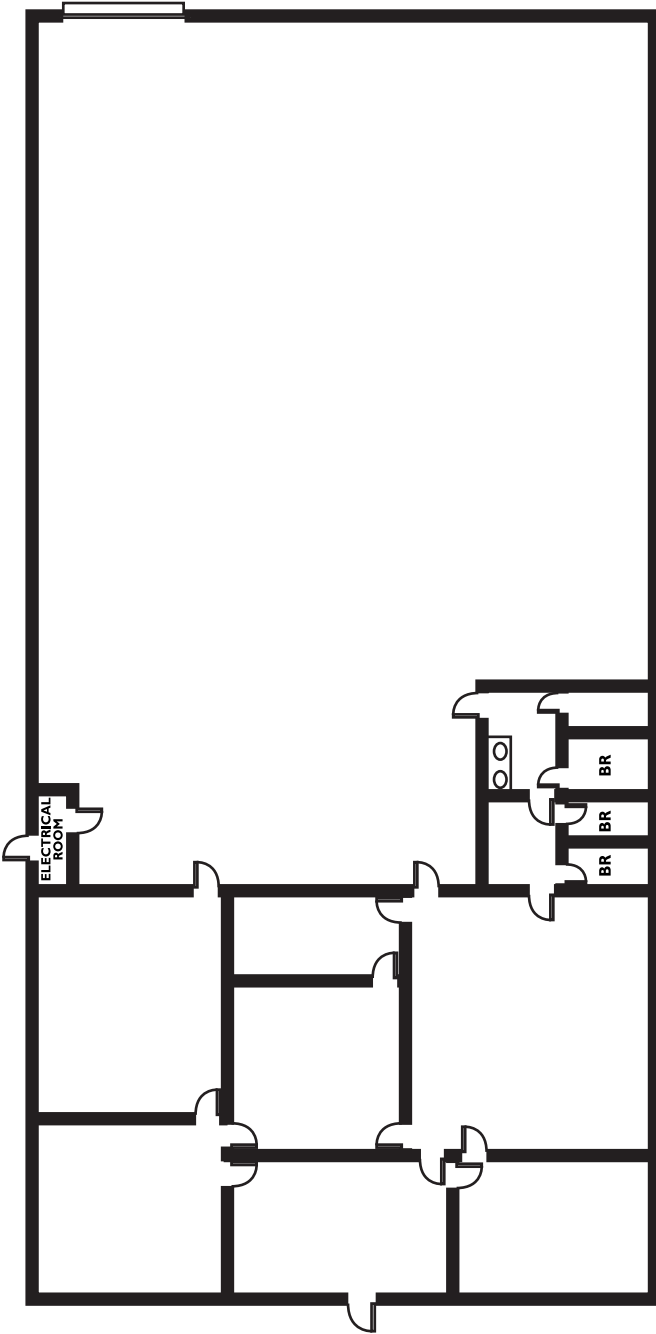


No warranty, express or implied, is made as to the accuracy of the information contained herein. This information is submitted subject to errors, omission, change of price, rental or other conditions, withdrawal without notice, and is subject to any special listing conditions imposed by our principals. Cooperating brokers, buyers, tenants and other parties who receive this document should not rely on it, but should use it as a starting point of analysis, and should independently confirm the accuracy of the information contained herein through a due diligence review of the books, records, files and documents that constitute reliable sources of the information described herein. Spectrum Commercial Real Estate, Inc. CA DRE #02042805

8759

REMMET AVENUE

CANOGA PARK, CA



spectrumcre.com | 818.252.9900

SPECTRUM
COMMERCIAL REAL ESTATE, INC.



RON KASSAN

Executive Vice President
818.512.5001
ron@availablewarehouses.com
CA DRE Lic. #01063078



ART MINASSIAN

Senior Vice President
818.634.3722
art@availablewarehouses.com
CA DRE Lic. #02026662



No warranty, express or implied, is made as to the accuracy of the information contained herein. This information is submitted subject to errors, omission, change of price, rental or other conditions, withdrawal without notice, and is subject to any special listing conditions imposed by our principals. Cooperating brokers, buyers, tenants and other parties who receive this document should not rely on it, but should use it as a starting point of analysis, and should independently confirm the accuracy of the information contained herein through a due diligence review of the books, records, files and documents that constitute reliable sources of the information described herein. Spectrum Commercial Real Estate, Inc. CA DRE #02042805