

517 OCEAN FRONT WALK
Venice, CA 90291

THE GINGERBREAD COURT
RETAIL AND OFFICE SPACES

F
O
R
L
E
A
S
E



102



JOHN MOUDAKIS
310.395.2663 x116
JOHNM@PARCOMMERCIAL.COM
Lic# 01833441

517 Ocean Front Walk, Venice, CA 90291

RETAIL SPACES:

- UNIT 2: 300 SF \$2,400.00 per month, NNN
- UNIT 3: 361 SF \$2,617.25 per month, NNN
- UNIT 15: 417.5 SF \$2,400.63 per month, NNN
- UNIT 18: 128 SF \$1,920.00 per month, NNN

OFFICE SPACES:

- UNIT 8: 629 SF \$2,201.50 per month, NNN
 - UNIT 9: 629 SF \$2,201.50 per month, NNN
 - UNIT 10: 659 SF \$2,505.45 per month, NNN
 - UNIT 11: 659 SF \$2,505.45 per month, NNN
 - UNIT 11A: 1,192 SF \$3,315.61 per month, NNN
- NNN estimated to be \$1.00 per square foot per month

AVAILABLE: Immediately

TERM: 1-5 years

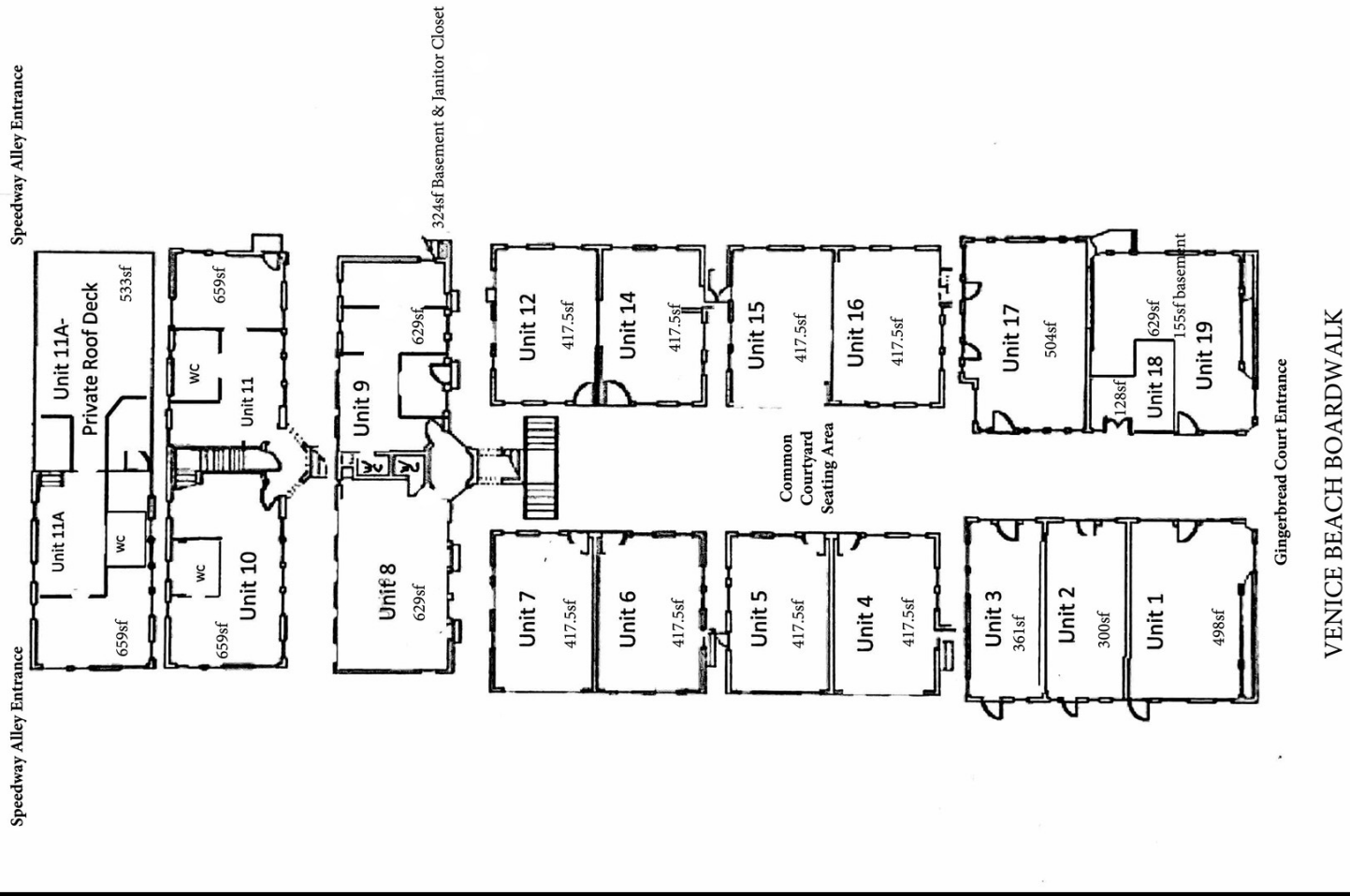
- Retail and office spaces in high traffic shopping court on Venice Beach Boardwalk
- Iconic Venice Beach Property



517 Ocean Front Walk, Venice, CA 90291

SITE PLAN

517 Ocean Front Walk Site Map



www.parcommercial.com

JOHN MOUDAKIS
310.395.2663 x116
JOHNM@PARCOMMERCIAL.COM
Lic# 01833441

All information furnished is from sources deemed reliable and which we believe to be correct, but no representation or guarantee is given as to its accuracy and is subject to errors and omissions. All measurements are approximate and have not been verified by Broker. You are advised to conduct an independent investigation to verify all information.

PROPERTY PHOTOS



www.parcommercial.com

JOHN MOUDAKIS
310.395.2663 x116
JOHNM@PARCOMMERCIAL.COM
Lic# 01833441

RAFAEL PADILLA
310.395.2663 X 102
RAFAEL@PARCOMMERCIAL.COM
LIC# 00960188

All information furnished is from sources deemed reliable and which we believe to be correct, but no representation or guarantee is given as to its accuracy and is subject to errors and omissions. All measurements are approximate and have not been verified by Broker. You are advised to conduct an independent investigation to verify all information.

517 Ocean Front Walk, Venice, CA 90291

PROPERTY MAPS



www.parcommercial.com

JOHN MOUDAKIS
310.395.2663 x116
JOHNM@PARCOMMERCIAL.COM
Lic# 01833441

All information furnished is from sources deemed reliable and which we believe to be correct, but no representation or guarantee is given as to its accuracy and is subject to errors and omissions. All measurements are approximate and have not been verified by Broker. You are advised to conduct an independent investigation to verify all information.

Venice is one of the most popular destinations in Los Angeles for visitors and locals alike. Known for its bohemian spirit, Venice is a buzzing beach town with upscale commercial and residential pockets. Free-spirited Venice Boardwalk is the site of funky shops, street performers and colorful murals, though, it is most famous for the quirky goings-on along its iconic beachfront boardwalk. Watch it all from the lively waterfront skate park, sit near the famous Muscle Beach outdoor gym or go visit the Venice Canals, a picturesque enclave of canals surrounded by modernist homes.

For edgy boutiques explore boho-chic Abbot Kinney Boulevard, one of L.A.'s best shopping districts. Abbot Kinney features foodie hot spots, stylish boutiques and coffee bars. Food trucks often pull up here, and there are plenty of places to grab a bite or a treat. A great time to visit is the First Friday of each month, when food trucks and live music line Abbot Kinney Boulevard.

