

# O'Hare Gateway Logistics Center

## 9100 W Belmont Avenue

Franklin Park, IL

### Key Facts

Property type	Industrial space
Building size	178,516 SF
Space available	40,000 - 87,417 SF



### Contact Us

Learn more about this property or schedule a tour by reaching out to our local investment and leasing officer.

**John Quinnelly**

+1 (251) 550-1001  
[john.quinnelly@eqtpartners.com](mailto:john.quinnelly@eqtpartners.com)

**Jason DeFilippis**

+1 (847) 867-4937  
[jason.defilippis@eqtpartners.com](mailto:jason.defilippis@eqtpartners.com)

# O'Hare Gateway Logistics Center

9100 W Belmont Avenue

Franklin Park, IL

## Building Specifications

87,417 SF Available (Divisible to 40,000 SF)

Office Space: 2,500 SF

Clear Height: 32'

Column Spacing: 52' x 43' (60' speed bay)

Sprinkler System: ESFR (K16.8)

Lighting: LED with motion sensors

Parking: 63 car spaces, 7 trailer spaces

Drive-In Access: 1 (12' x 14')

Loading: 24 exterior dock doors with mechanical levelers

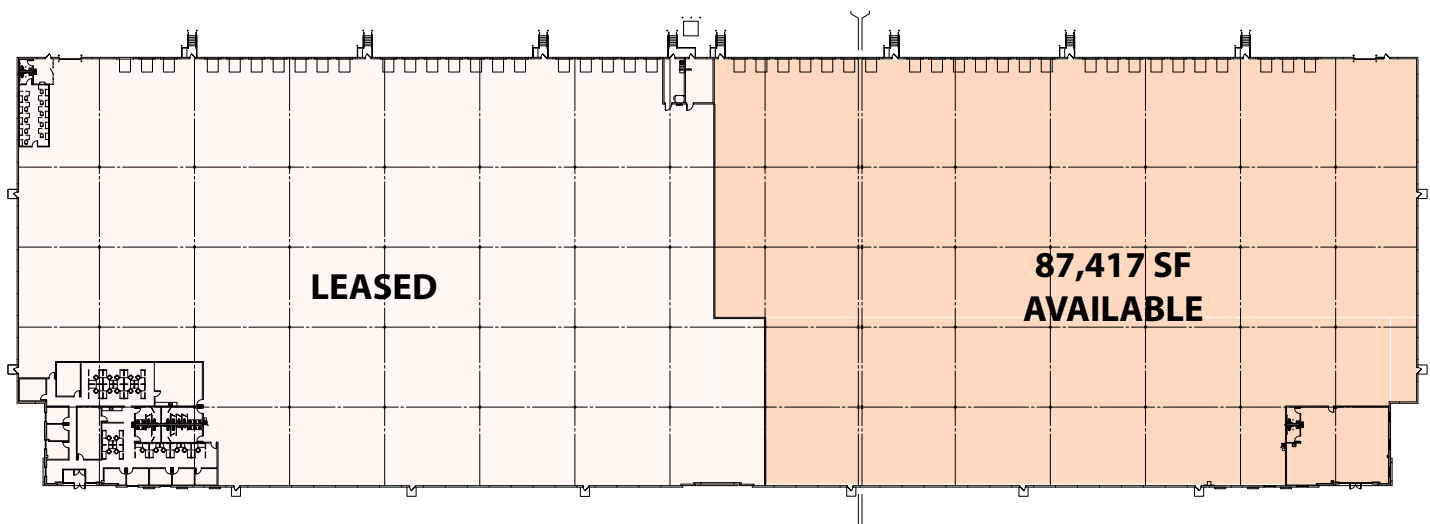
Power: 400 amps, 480/277V, 3-phase, 4-wire (expandable)

Flooring: 6" Ductilcrete concrete slab

Taxes: Low 6B Cook County taxes

Constructed: 2018

Prime O'Hare area with easy access to expressways and public transportation



## Contact Us

Learn more about this property or schedule a tour by reaching out to our local investment and leasing officer.

**John Quinnelly**

+1 (251) 550-1001  
john.quinnelly@eqtpartners.com

**Jason DeFilippis**

+1 (847) 867-4937  
jason.defilippis@eqtpartners.com

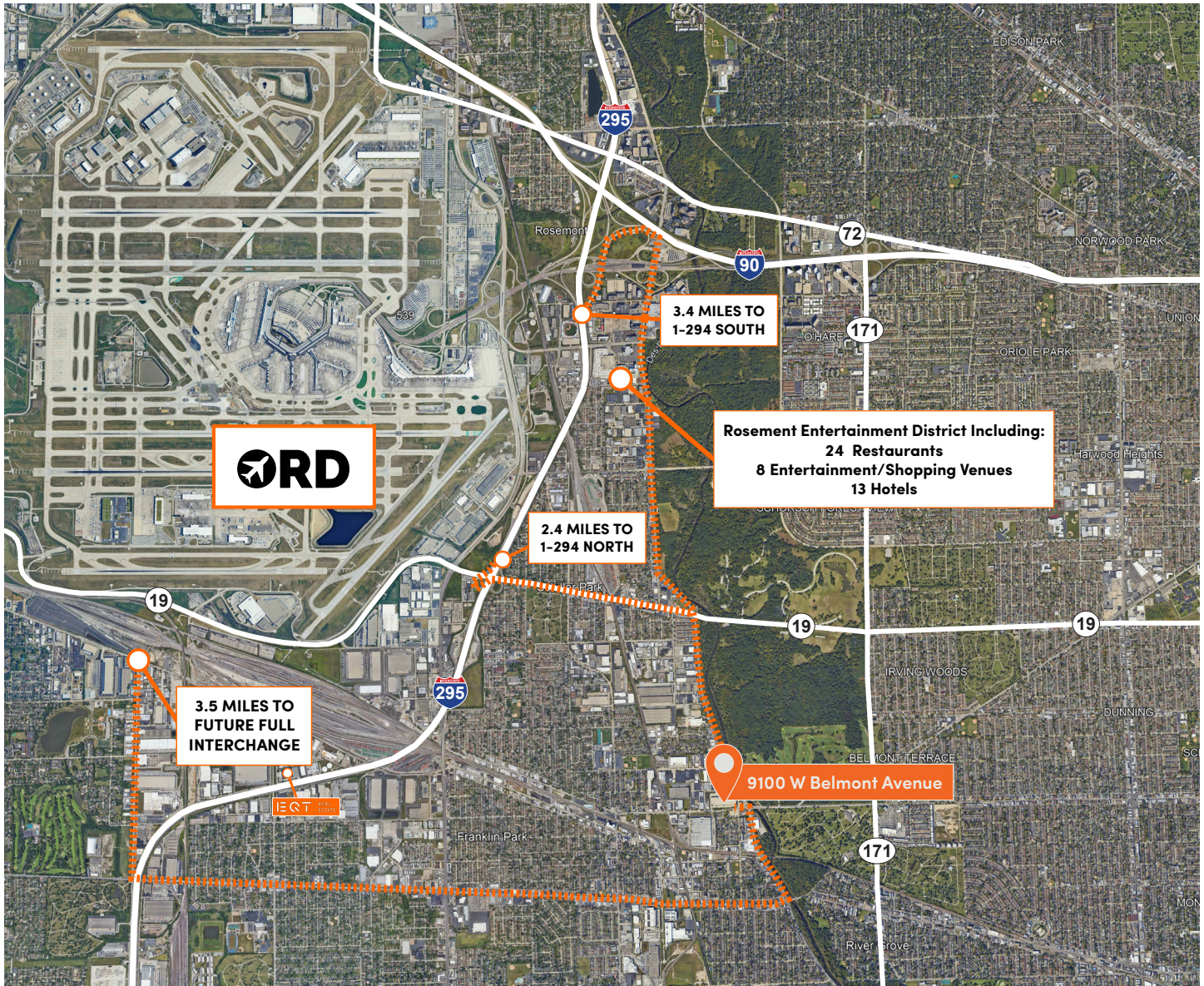


# O'Hare Gateway Logistics Center

## 9100 W Belmont Avenue

Franklin Park, IL

### Location



### Contact Us

Learn more about this property or schedule a tour by reaching out to our local investment and leasing officer.

**John Quinnelly**

+1 (251) 550-1001

[john.quinnelly@eqtpartners.com](mailto:john.quinnelly@eqtpartners.com)

**Jason DeFilippis**

+1 (847) 867-4937

[jason.defilippis@eqtpartners.com](mailto:jason.defilippis@eqtpartners.com)