



SOUTH PARK GROUP

www.southparkgroup.com



FOR LEASE

PRIME RETAIL

169 North La Brea Avenue
Los Angeles, California 90036

Freestanding building at the corner of La Brea Avenue and Beverly Blvd.

AVAILABLE SPACE

Size: Approx. 7,000 sq. ft. of retail consisting of:
4,000 sqft ground floor and 3,000 sqft mezzanine

Rate: \$23,500 per month, Modified Gross

Parking: 5 parking spaces at the rear of the property
and additional valet parking available.

SAM MINASIAN

Tel. 323.782.1261

E. samminasian@southparkgroup.com

No. 01212823

SOUTH PARK GROUP | 8322 Beverly Blvd., Suite 301 | Los Angeles, CA 90048

This information has been furnished by sources that we deem reliable, but for which we assume no liability. The information contained herein is given, in confidence, with the understanding that all negotiations pertaining to this property be handled through the submitting office. All measurements are approximate.



SOUTH PARK GROUP

www.southparkgroup.com

INTERIOR

169-A N. La Brea Avenue, Los Angeles, California 90015



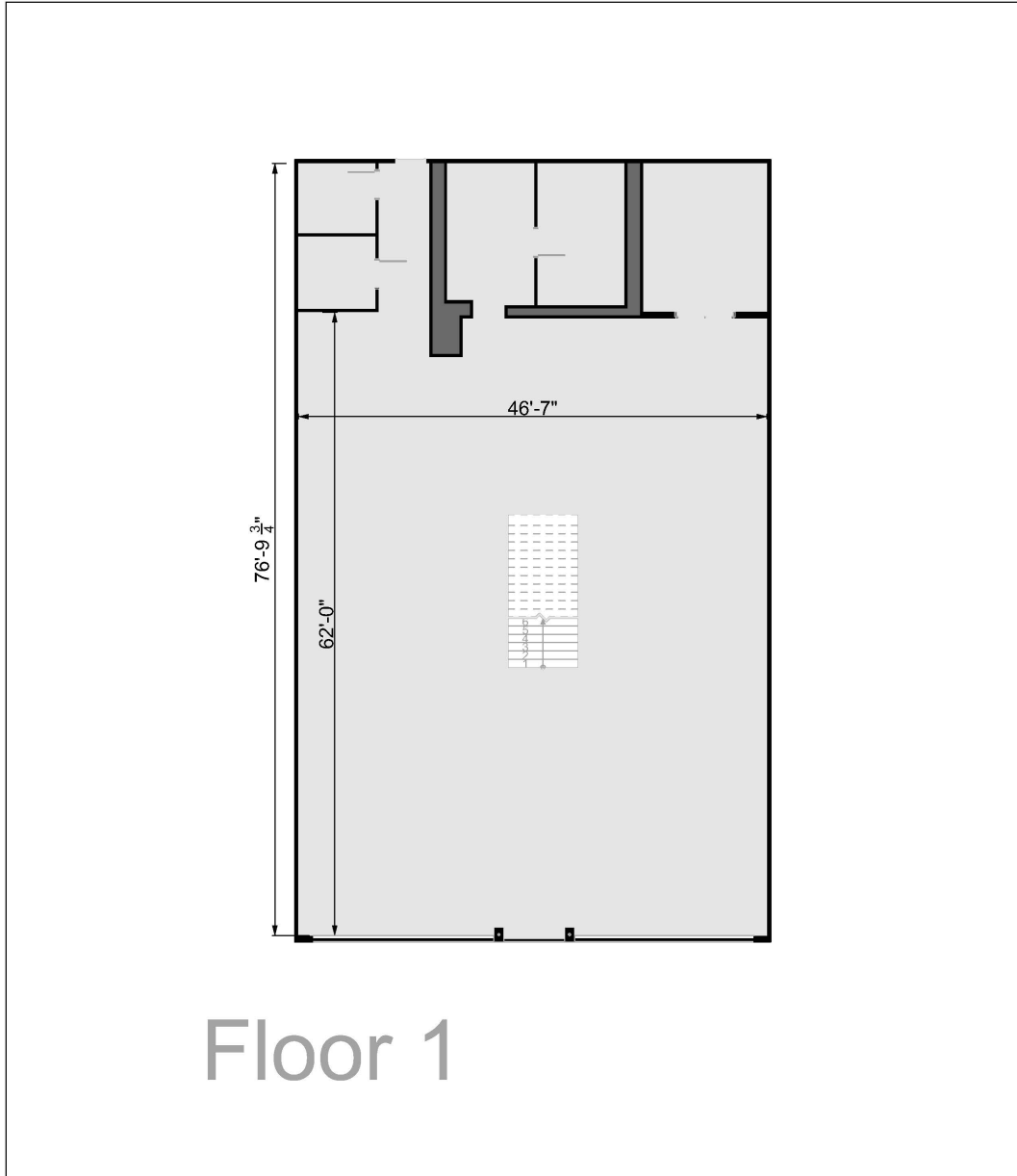
SOUTH PARK GROUP | 8322 Beverly Blvd., Suite 301 | Los Angeles, CA 90048

This information has been furnished by sources that we deem reliable, but for which we assume no liability. The information contained herein is given, in confidence, with the understanding that all negotiations pertaining to this property be handled through the submitting office. All measurements are approximate.



FLOOR PLAN 1

169 N. La Brea Avenue, Los Angeles, California 90036



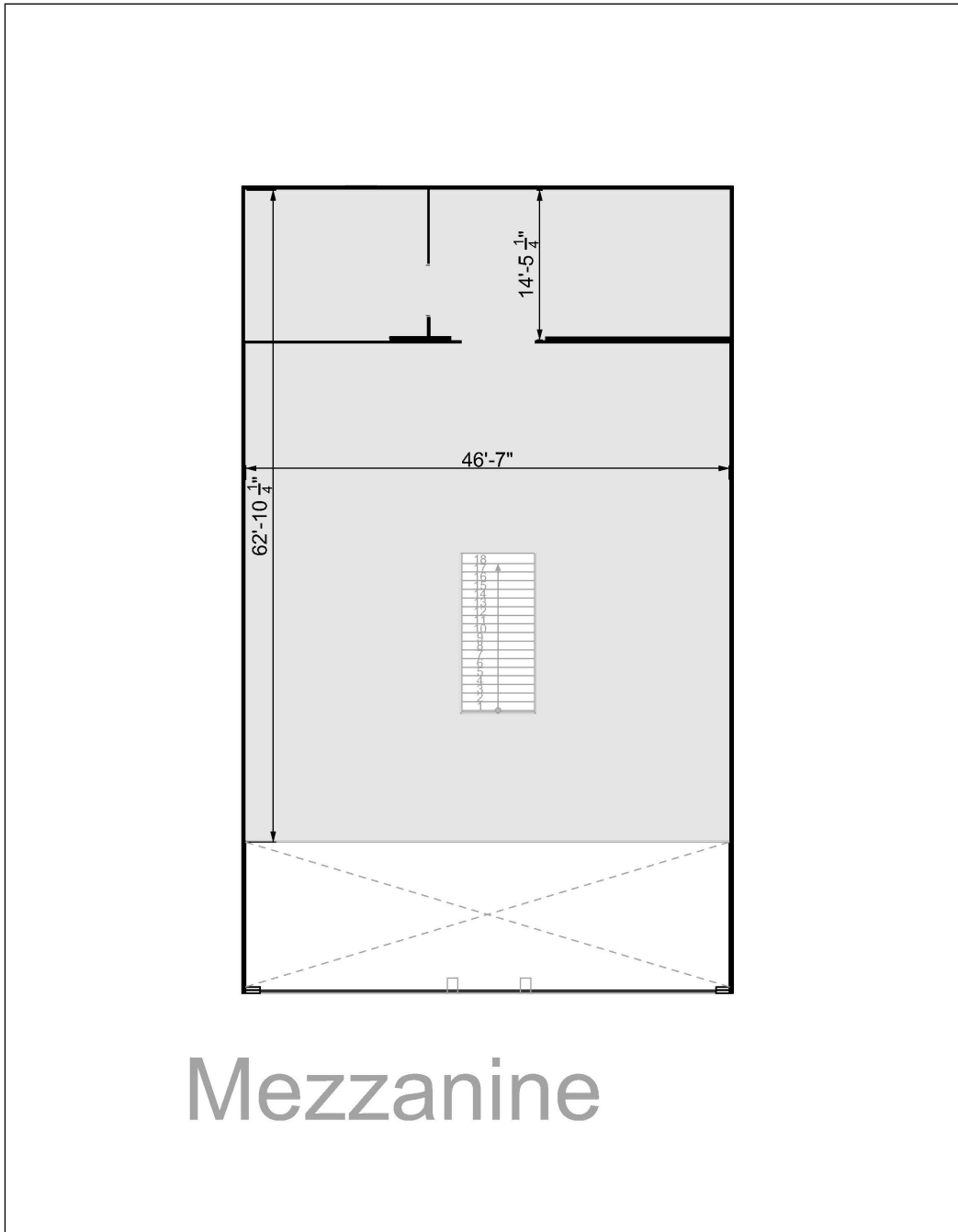


SOUTH PARK GROUP

www.southparkgroup.com

MEZZANINE

169 N. La Brea Avenue, Los Angeles, California 90036



SOUTH PARK GROUP | 8322 Beverly Blvd., Suite 301 | Los Angeles, CA 90048

This information has been furnished by sources that we deem reliable, but for which we assume no liability. The information contained herein is given, in confidence, with the understanding that all negotiations pertaining to this property be handled through the submitting office. All measurements are approximate.