

FOR LEASE

222 E Park Street
Edwardsville, IL 62025



PROFESSIONAL OFFICE SPACE AVAILABLE

- 3,373 SF on the main level in Class A Building
- Available 3rd Qtr. 2026
- Fully built out space as existing bank build-out
- Located in prime downtown Edwardsville commercial district
- High visibility
- Across from Edwardsville Public Library & City Park
- Easy access to 55, 255, 70 & 270
- Monument signage available
- Parking available
- Professionally Managed
- Ideal for financial services, professional office or retail use
- **Lease Rate: \$30.00 PSF plus NNN estimated at \$7.42 PSF**

For information, contact:

DAVE KUNKEL

Broker

Dave@choosekgw.com

618.977.1846 Cell

KELLY HULVEY

Broker

Kelly@choosekgw.com

618.210.4702 Cell

LUKE ALLAN

Broker

Luke@choosekgw.com

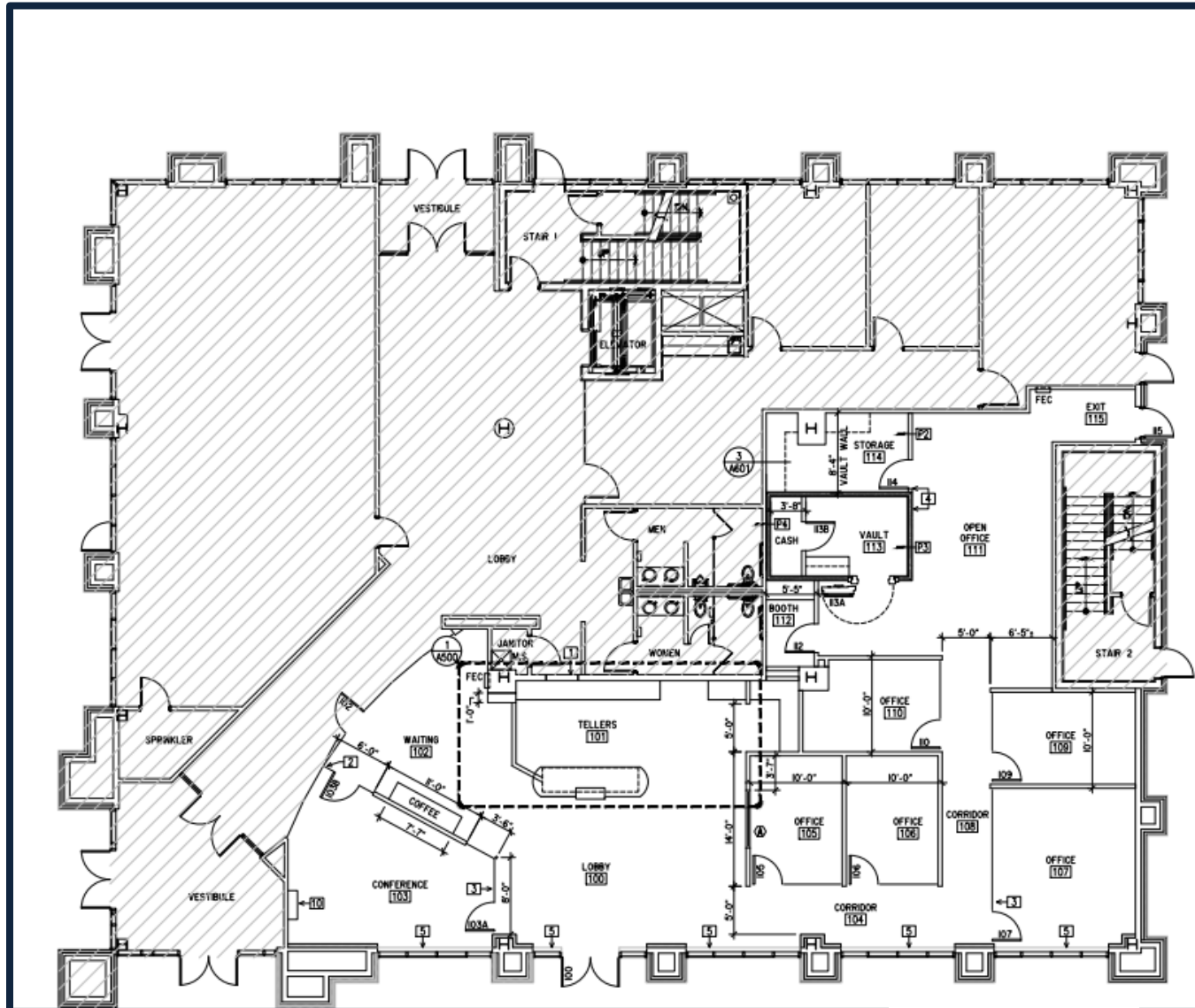
618.578.3598 Cell

Kunkel Commercial Group
3318 N Illinois, Swansea, IL 62226
CHOOSEKGW.COM
618.202.4500 Office



Information herein is not warranted and subject to change without notice. We assume no liability for errors on items included in quoted price. Broker makes no representation as to the environmental condition of property and recommends Purchaser's / Tenant's independent investigation.

FLOOR PLAN



3,373 SF Available

Main Level Space- Suite 100



Information herein is not warranted and subject to change without notice. We assume no liability for errors on items included in quoted price. Broker makes no representation as to the environmental condition of property and recommends Purchaser's / Tenant's independent investigation.