



FREEWAY IDENTITY

AVAILABLE FOR LEASE

97,000 SQUARE FEET



2550 PELLISSIER PLACE, CITY OF INDUSTRY, CA

BUILDING FEATURES

Office Space: 6,500 Square Feet
Clearance: 26' minimum at 1st column
Calculated Fire Sprinklers: .60 GPM/3,000 S.F.
Power: 400 amps, 277/480 volts, 3 phase, 4 wire
Lighting: 400 Watt Metal Halide
Loading: 11 dock high loading doors
1 ground level ramp
Parking Spaces: 60 Cars
Access: Excellent Freeway Access



Terry Baker (562) 948-4341
R.E. License #00711593 (CA)
tbaker@majesticrealty.com

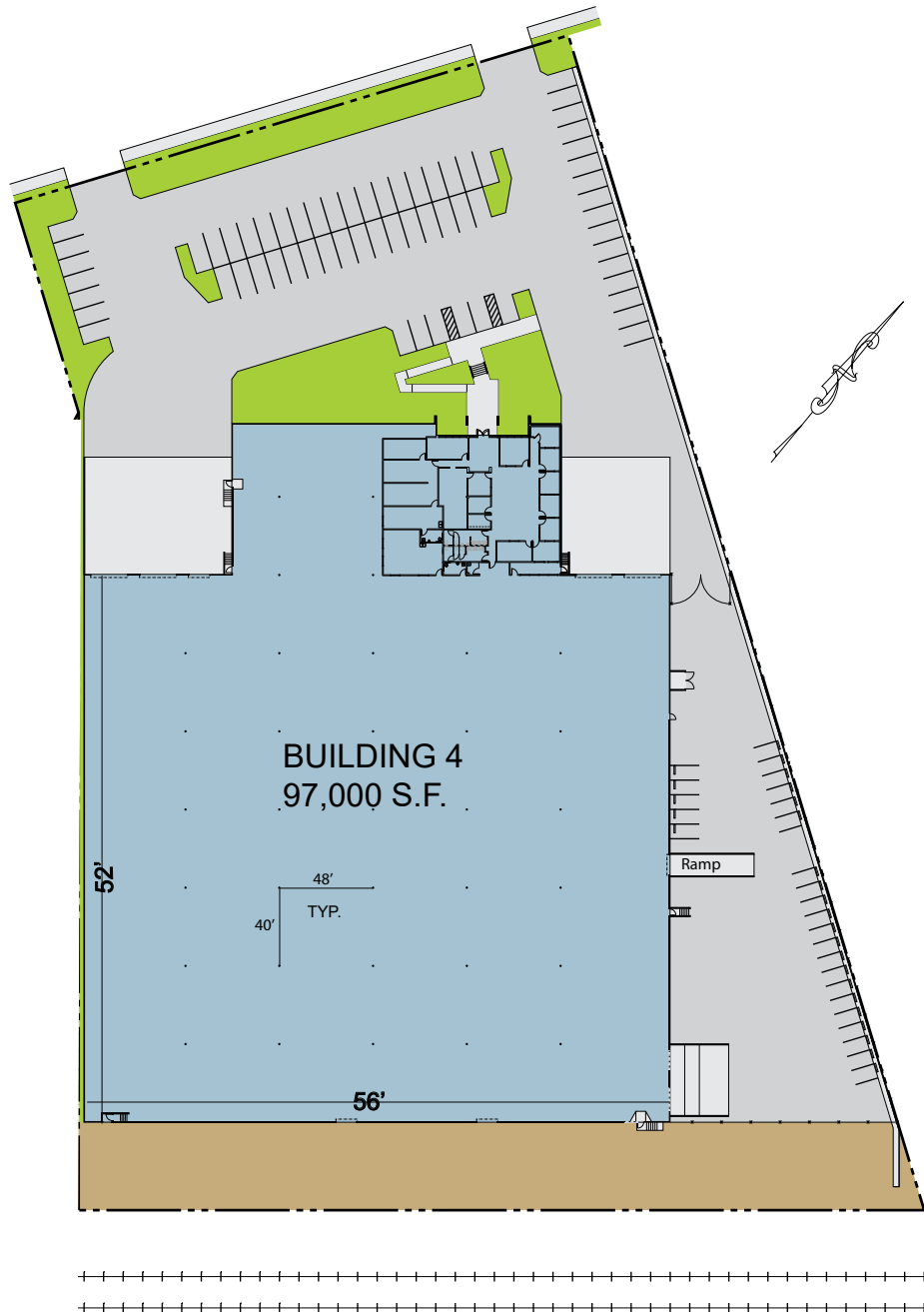


FREEWAY IDENTITY

AVAILABLE FOR LEASE

97,000 SQUARE FEET

2550 PELLISSIER PLACE, CITY OF INDUSTRY, CA



Terry Baker (562) 948-4341
R.E. License #00711593 (CA)
tbaker@majesticrealty.com

13191 Crossroads Parkway North, Sixth Floor | City of Industry, CA 91746-3497 | www.majesticrealty.com | R.E. License #00255328 (CA)

This statement is based upon information which we believe to be correct and is obtained from sources we regard as reliable but we assume no liability for errors or omissions therein.