

FOR SALE AND LEASE



PROPERTY DETAILS

164 West 1st North, Rexburg, Idaho 83440

- Mixed use industrial property for sale and lease
- Two buildings: 1 industrial/warehouse space with offices (approx. 3,000 SF), and 1 warehouse building (approx. 4,500 SF)
- Approximately 1.3 acre of land
- Centrally located in Rexburg
- Great access to Main Street and near BYU-I
- Sales price: \$500,000
- Lease rate: Contact Agent

2025 DEMOS



EST. POPULATION

1 MILE » **29,673**
3 MILE » **44,381**
5 MILE » **51,435**



EST. HOUSEHOLDS

1 MILE » **5,138**
3 MILE » **10,094**
5 MILE » **12,075**



EST. AVERAGE HH INCOME

1 MILE » **\$99,577**
3 MILE » **\$91,512**
5 MILE » **\$94,901**

NEWMARK



MOUNTAIN WEST

DUSTIN MORTIMER

dmortimer@newmarkmw.com

direct 208.874.0230

[View Profile](#)

**FULL SERVICE
COMMERCIAL REAL ESTATE**

3345 Chasewood Drive

Ammon, ID 83406

Office 208.874.0230

www.newmarkmw.com



NEWMARK

 **MOUNTAIN WEST**

DUSTIN MORTIMER
dmortimer@newmarkmw.com
direct 208.874.0230
[View Profile](#)



**FULL SERVICE
COMMERCIAL REAL ESTATE**
3345 Chasewood Drive
Ammon, ID 83406
Office 208.874.0230
www.newmarkmw.com

NEWMARK

 MOUNTAIN WEST

DUSTIN MORTIMER

dmortimer@newmarkmw.com

direct 208.874.0230

[View Profile](#)



**FULL SERVICE
COMMERCIAL REAL ESTATE**

3345 Chasewood Drive

Ammon, ID 83406

Office 208.874.0230

www.newmarkmw.com



NEWMARK

 **MOUNTAIN WEST**

DUSTIN MORTIMER

dmortimer@newmarkmw.com

direct 208.874.0230

[View Profile](#)

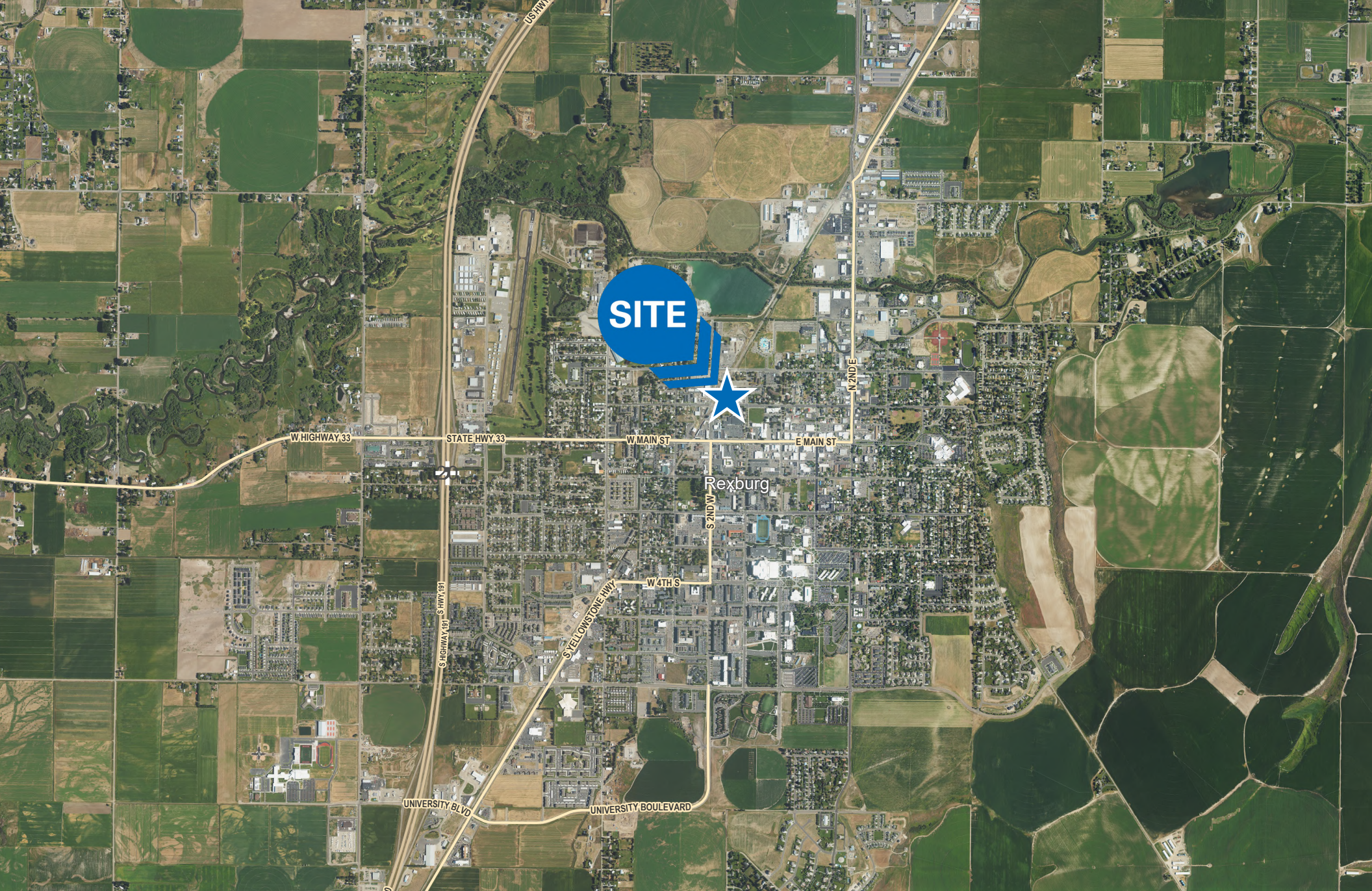
**FULL SERVICE
COMMERCIAL REAL ESTATE**

3345 Chasewood Drive

Ammon, ID 83406

Office 208.874.0230

www.newmarkmw.com



DUSTIN MORTIMER
dmortimer@newmarkmw.com
direct 208.874.0230
[View Profile](#)

**FULL SERVICE
COMMERCIAL REAL ESTATE**
3345 Chasewood Drive
Ammon, ID 83406
Office 208.874.0230
www.newmarkmw.com