



The RailYard South End

1422 South Tryon
Street

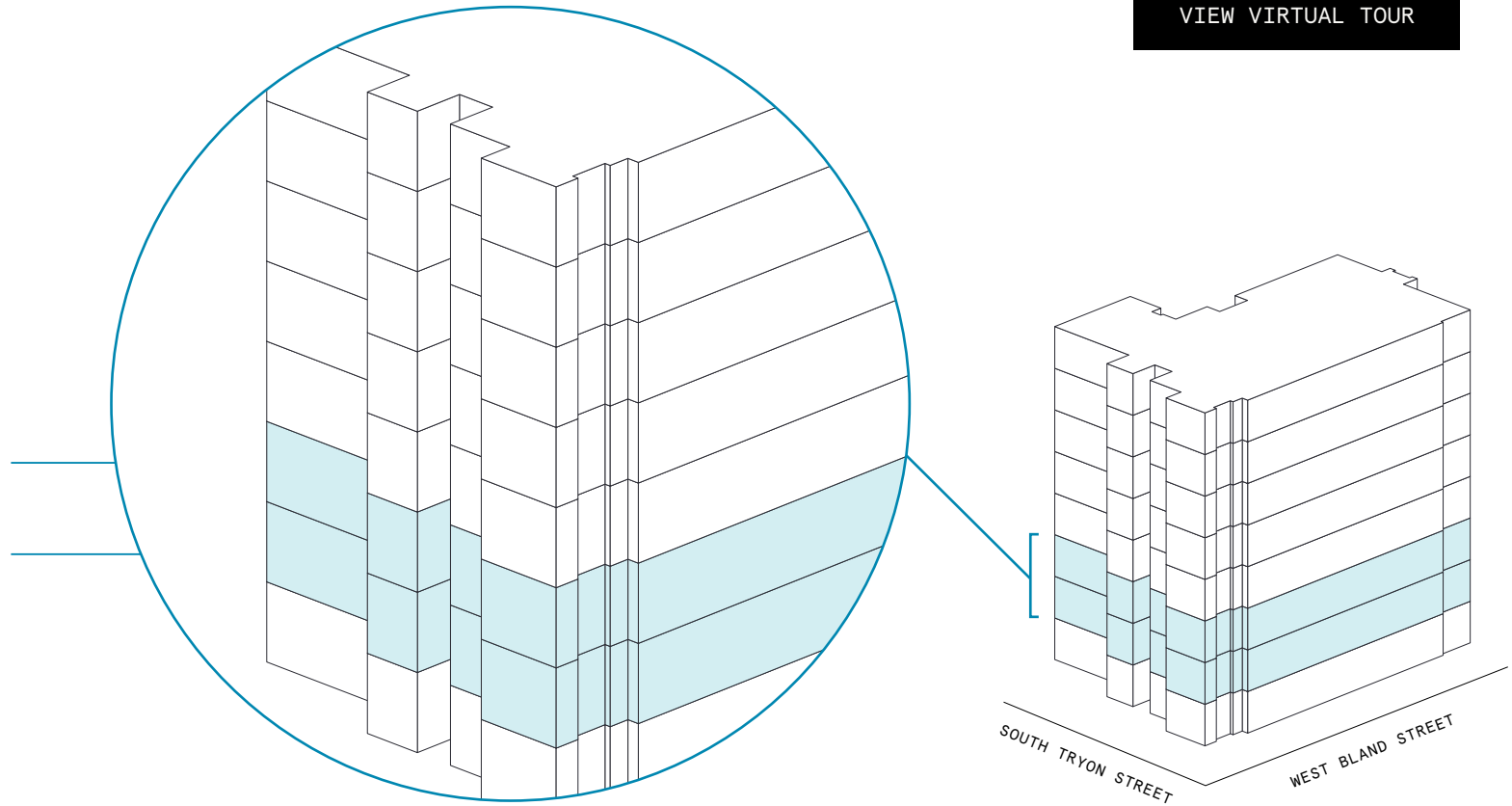
Space
availability
summary

WeWork @ 1422 South Tryon Street
Charlotte, NC

wework

[VIEW VIRTUAL TOUR](#)

3rd Floor 21,169 RSF
2nd Floor 23,599 RSF



44,768 RSF

TOTAL WEWORK RSF

1422 South Tryon Street

At a glance

Workspaces designed for productivity and creativity with flexible size & term

Dedicated, private suites available from 92 to 5,455 RSF

Move-in ready suites-furnished & wired

8

TOTAL BUILDING FLOORS

163,261

TOTAL BUILDING SQ FT

All dimensions are approximate and subject to variances. It is your obligation to independently verify the particulars of the property. WeWork reserves the right to make changes.



A fully stocked pantry makes your workday a breeze. Members can enjoy a fresh cup of coffee or tea on the house at the island counters.



Our private meeting rooms are spacious and equipped with full A/V connectivity so you can ace your next presentation.

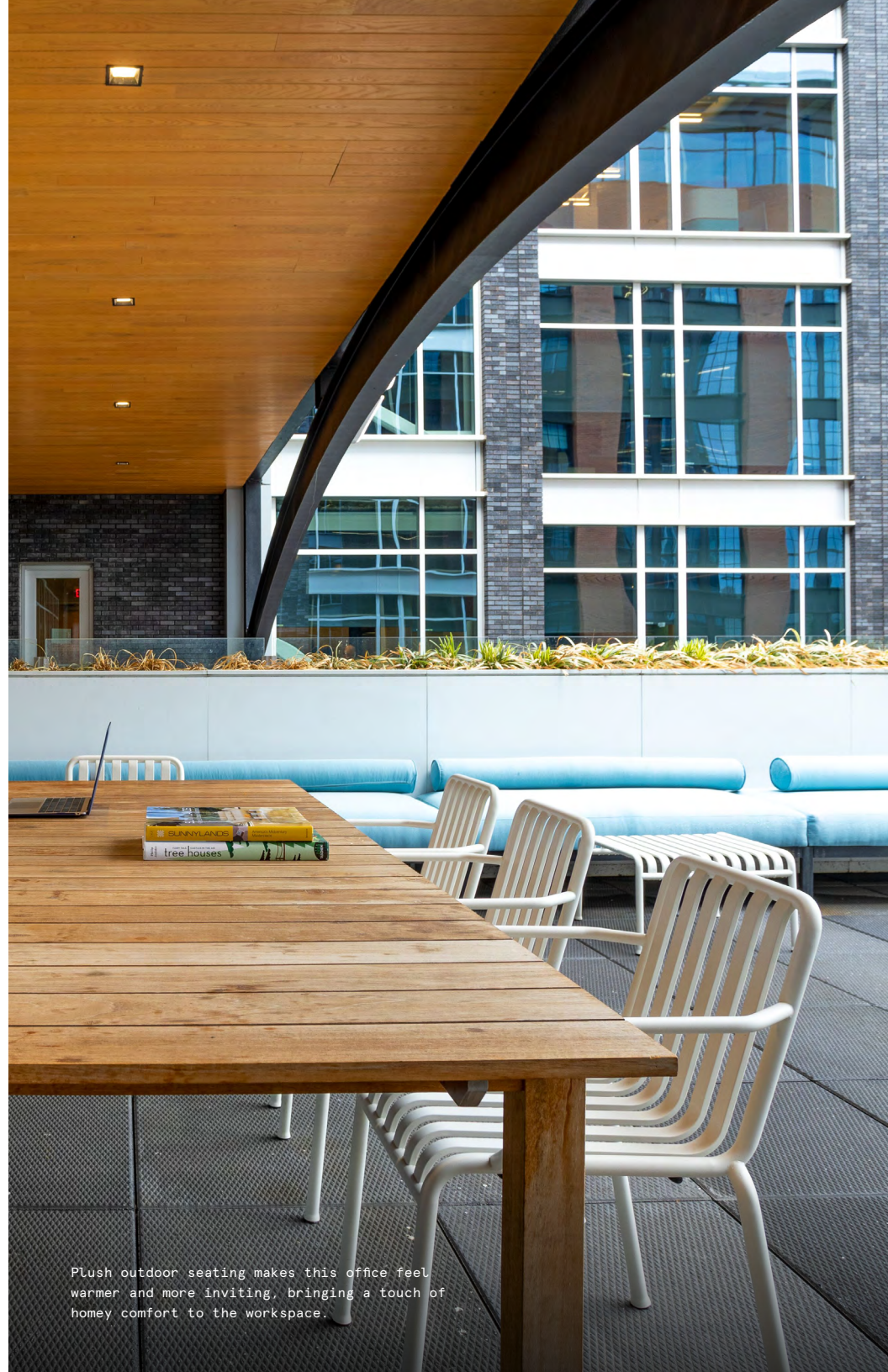
A modern-industrial icon nestled in Charlotte's lively South End

The RailYard South End is an 8-story mixed-use development in the heart of Charlotte's South End. Inspired by turn-of-the-century rail yard houses, this space blends the luxury of high-end, updated amenities and architecture with touches of 18th-century industrial design. WeWork's nearly 45,000 square foot offering—including a mix of private suites, meeting rooms, and flexible workspace—puts you right in the heart of the action.

Light-filled offices, easy commuting options, and a myriad of nearby food and entertainment offerings in the hip South End make this state-of-the-art building truly one-of-a-kind. From local museums and boutiques to homegrown breweries, The RailYard South End lets you experience a side of Charlotte you've never seen before.



A mix of private meeting spaces and shared workspace areas means members have ultimate freedom and flexibility to work as they please.

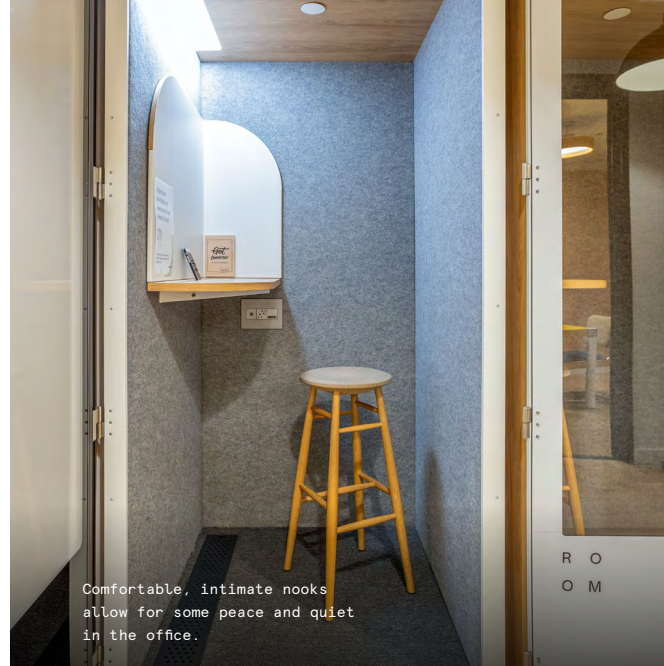


Plush outdoor seating makes this office feel warmer and more inviting, bringing a touch of homey comfort to the workspace.

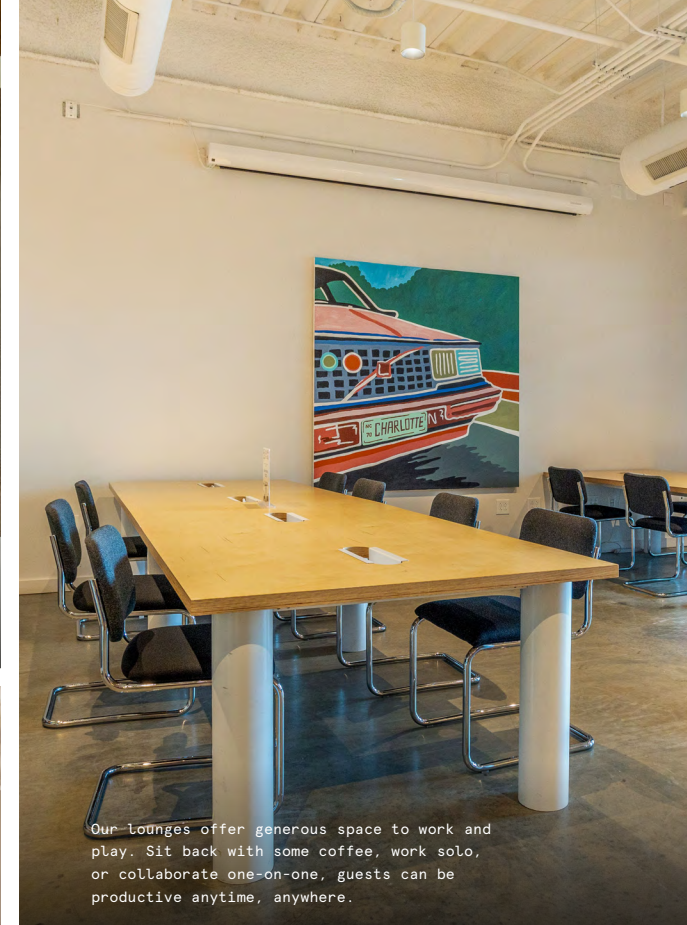
The warmth of home with the subtle splendor of an industrial loft

Designed with an urban, artistic vibe in mind, this loft-style office space combines the best of past and present styles with stunning views, luxury amenities, and eclectic decor choices sure to impress. Ample natural light and a timeless yet fun design aesthetic brighten up the space, marrying the comforts of home and work and inspiring productive and creative energy.

- Impressive natural and artificial light features include oversized windows, custom neons, and decorative pendant lamps hung over individual nooks and seating areas
- Blend of sleek, cool materials—like stainless steel and exposed concrete—with warm pops of color and millwork provides the comfort of home with the sleek sophistication of the modern office
- Custom artwork by WeWork's in-house Arts and Graphics team and featured photography and prints from local artists showcase Charlotte's artisanal side



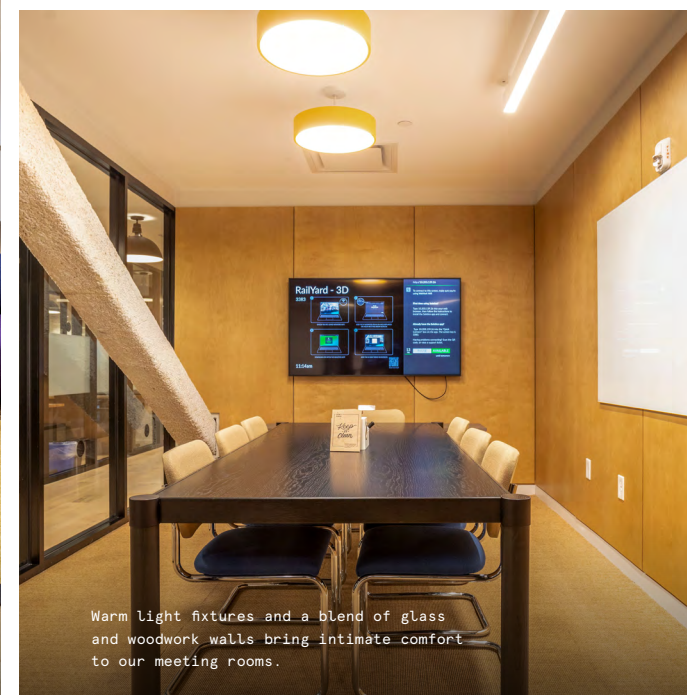
Comfortable, intimate nooks allow for some peace and quiet in the office.



Our lounges offer generous space to work and play. Sit back with some coffee, work solo, or collaborate one-on-one, guests can be productive anytime, anywhere.



Custom artwork and graphics from local artists and WeWork's in-house team brighten up the space and accent its warm, natural palette.



Warm light fixtures and a blend of glass and woodwork walls bring intimate comfort to our meeting rooms.



The front Community desk inviting atmosphere helps you feel right at home from the moment you arrive.



Our pantries are the perfect pit stop to enjoy a chat and a quick snack with your coworker.

On-site amenities

- 24/7 security
- Electronic keycard access
- Web-based visitor access
- Business-class printers
- Professional and social events
- Stocked pantry
- US mail drop
- Private meeting rooms
- New parent's room
- Phone booths
- Dog-friendly spaces
- Bicycle storage
- On-site parking

Building specifications



Hours of operation

Monday - Friday: 8am-5pm



Security

Monday - Thursday: 5pm-12am

Friday - Saturday: 11am - 3am

Sunday: 12pm-10pm



HVAC

Monday - Friday: 7am-6pm



Building history

Built in 2019

Designed by RBA Group

Developed by Beacon



Elevators

2 passenger elevators

1 freight elevator

1 parking garage elevator



Fire strategy

Fully-sprinklered floors



Building size

8 stories

163,261 SF



Certifications








LEED Silver

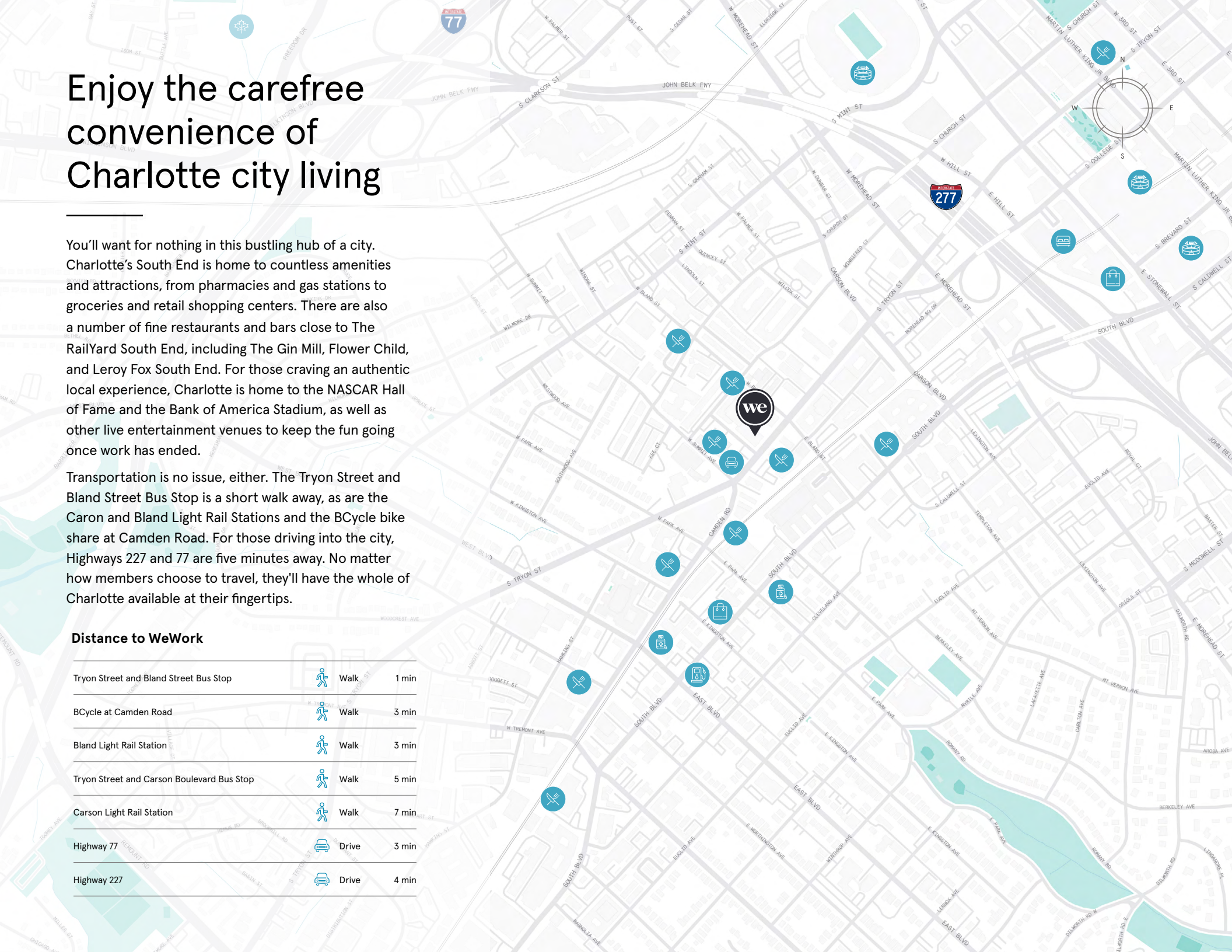
Enjoy the carefree convenience of Charlotte city living

You'll want for nothing in this bustling hub of a city. Charlotte's South End is home to countless amenities and attractions, from pharmacies and gas stations to groceries and retail shopping centers. There are also a number of fine restaurants and bars close to The RailYard South End, including The Gin Mill, Flower Child, and Leroy Fox South End. For those craving an authentic local experience, Charlotte is home to the NASCAR Hall of Fame and the Bank of America Stadium, as well as other live entertainment venues to keep the fun going once work has ended.

Transportation is no issue, either. The Tryon Street and Bland Street Bus Stop is a short walk away, as are the Caron and Bland Light Rail Stations and the BCycle bike share at Camden Road. For those driving into the city, Highways 227 and 77 are five minutes away. No matter how members choose to travel, they'll have the whole of Charlotte available at their fingertips.

Distance to WeWork

Tryon Street and Bland Street Bus Stop		Walk	1 min
BCycle at Camden Road		Walk	3 min
Bland Light Rail Station		Walk	3 min
Tryon Street and Carson Boulevard Bus Stop		Walk	5 min
Carson Light Rail Station		Walk	7 min
Highway 77		Drive	3 min
Highway 227		Drive	4 min



2nd Floor

23,599 RSF






9

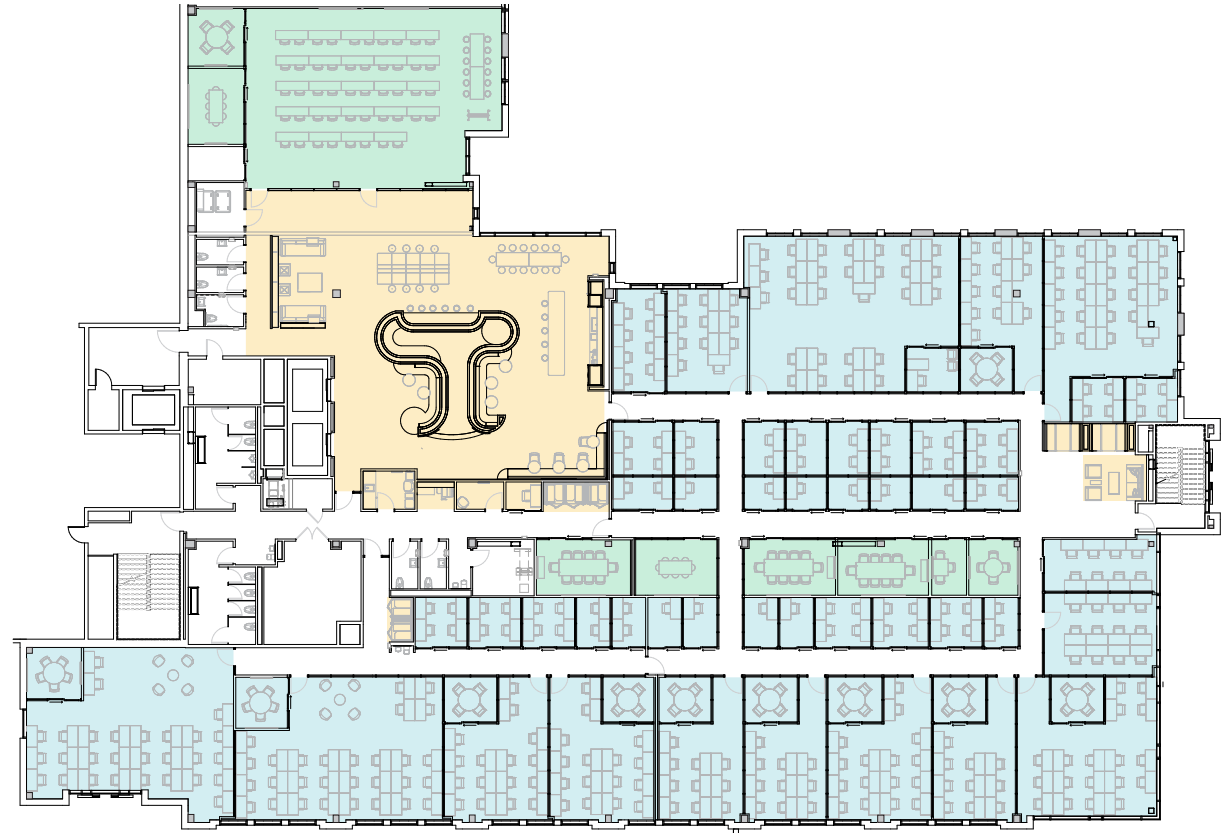
MEETING ROOM(S)

4

SHARED WORKSPACE(S)

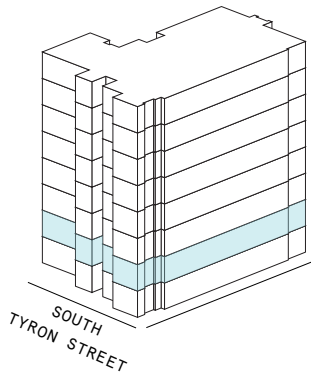
LEGEND

-  MEETING ROOM
-  SHARED WORKSPACE
-  DEDICATED SPACE



SOUTH TYRON STREET

WINONA STREET



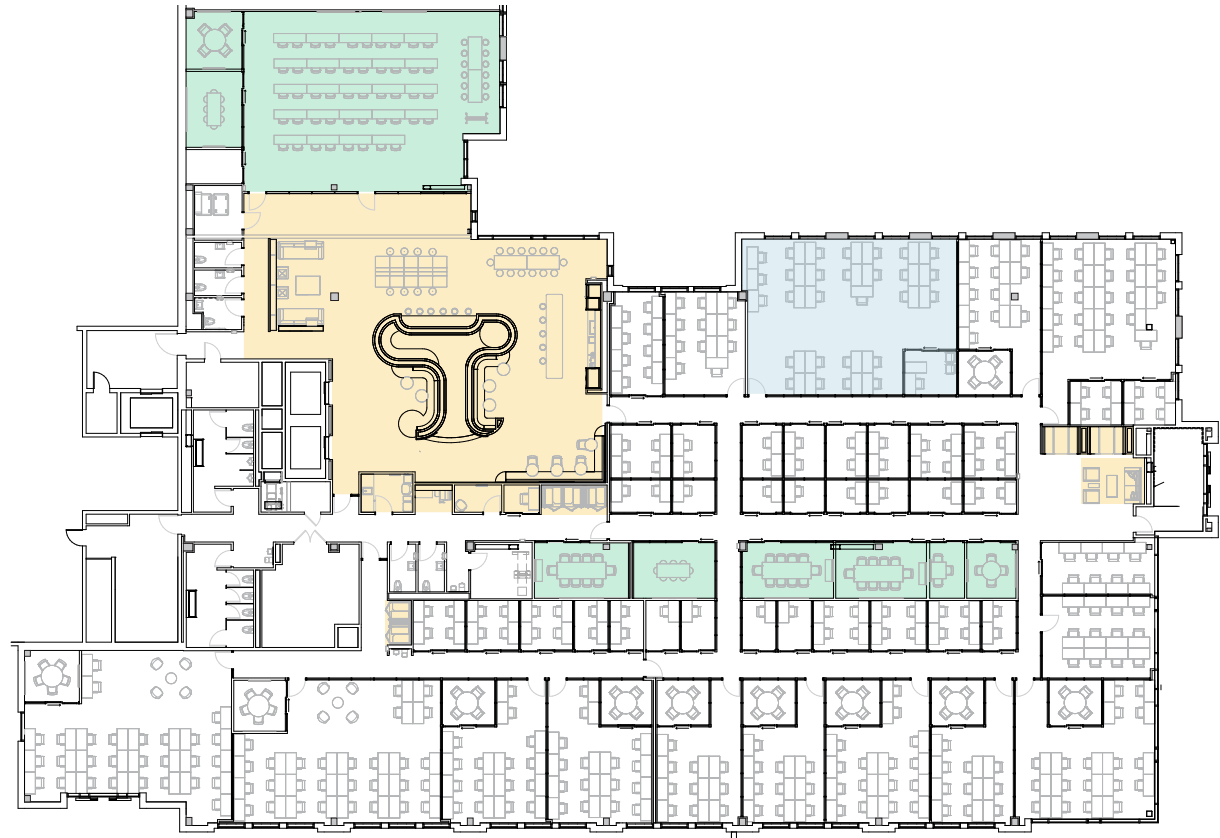
2nd Floor

23,599 RSF

2,451 RSF Suite 02-105

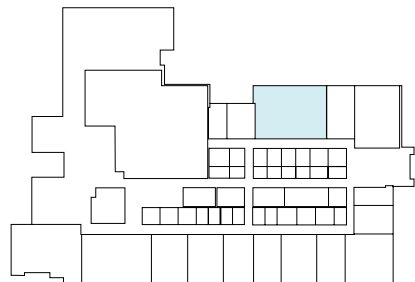
1

PRIVATE OFFICE(S)



SOUTH TYRON STREET

WINONA STREET



SOUTH TYRON STREET

WINONA STREET

Suite 02-105

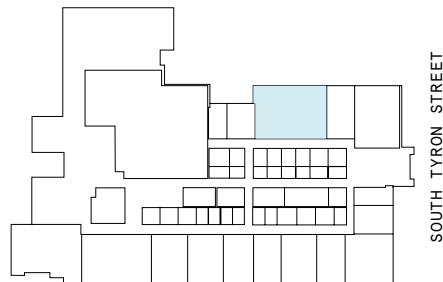
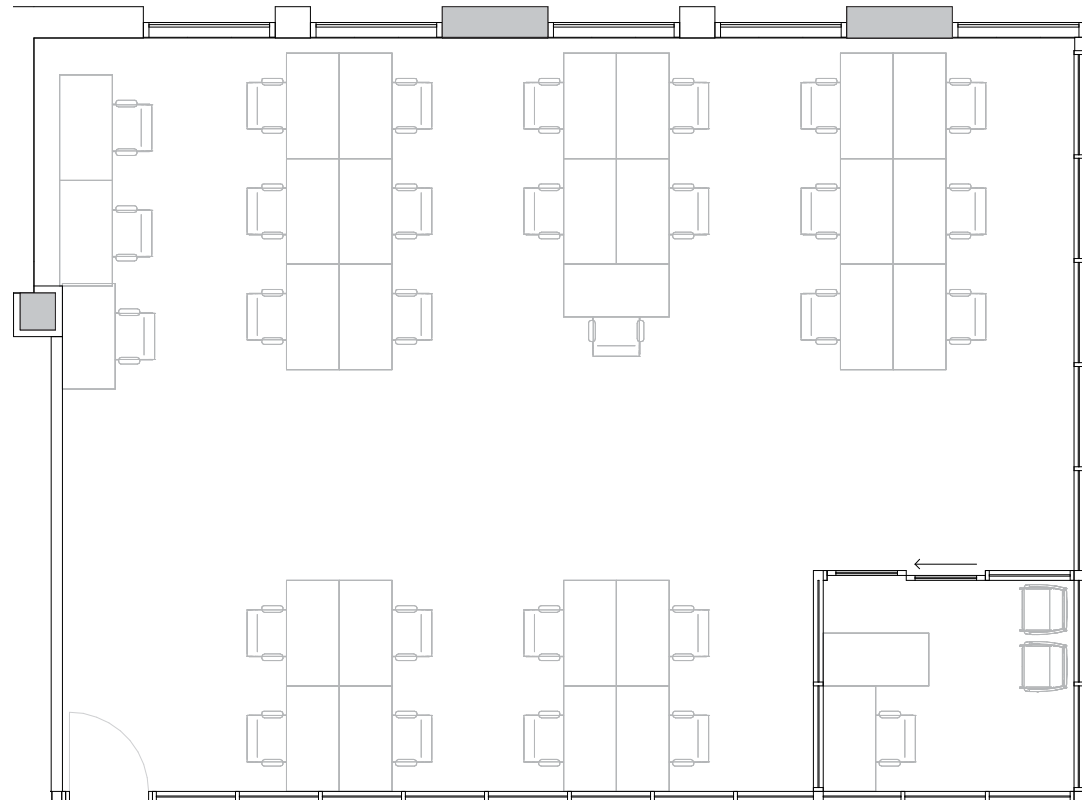
2nd Floor

1

PRIVATE OFFICE(S)

2,451 RSF

RENTABLE AREA



WINONA STREET

SOUTH TYRON STREET

2nd Floor

23,599 RSF

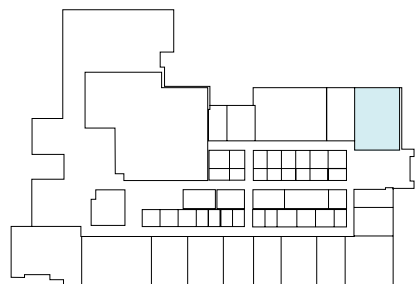
1,844 RSF Suite 02-114

2
PRIVATE OFFICE(S)



SOUTH TYRON STREET

WINONA STREET



SOUTH TYRON STREET

WINONA STREET

Suite 02-114

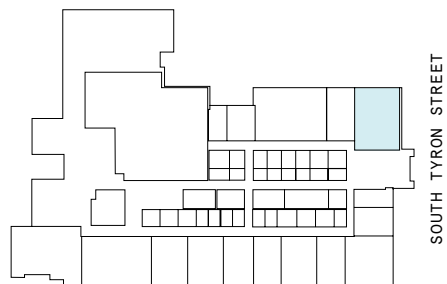
2nd Floor

2

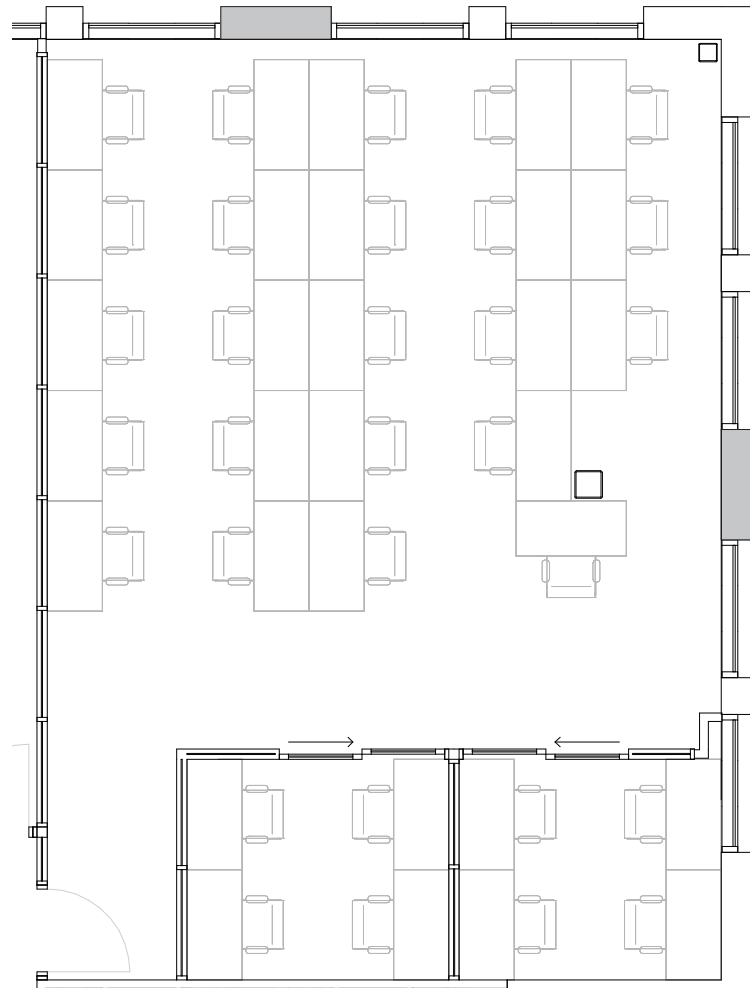
PRIVATE OFFICE(S)

1,844 RSF

RENTABLE AREA



WINONA STREET



2nd Floor

23,599 RSF

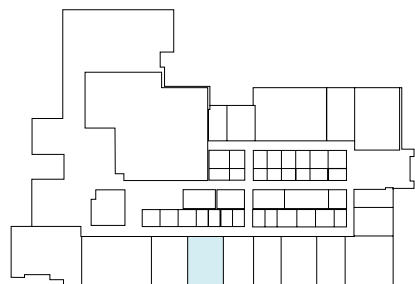
1,091 RSF Suite 02-138

1
MEETING ROOM(S)



SOUTH TYRON STREET

WINONA STREET



SOUTH TYRON STREET

WINONA STREET

Suite 02-138

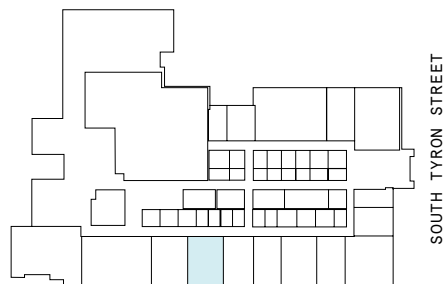
2nd Floor

1

MEETING ROOM(S)

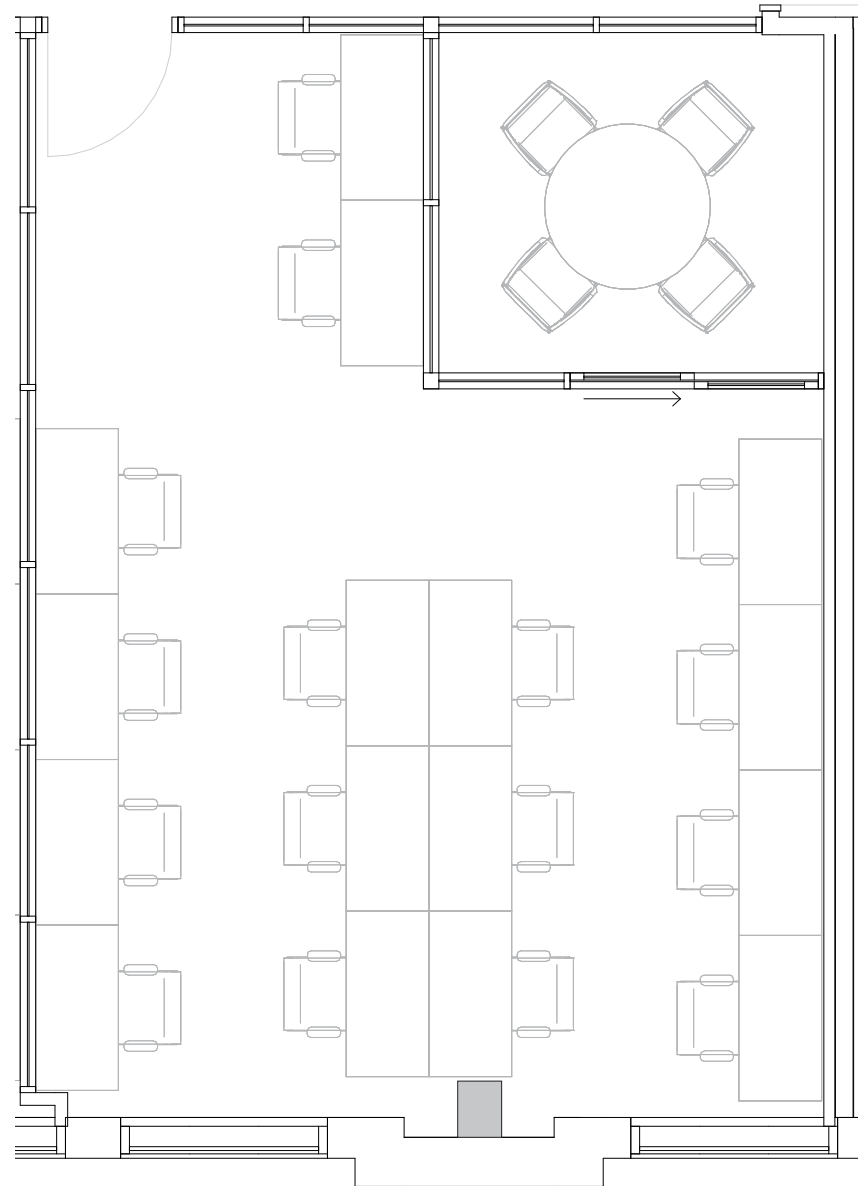
1,091 RSF

RENTABLE AREA



WINONA STREET

SOUTH TYRONE STREET

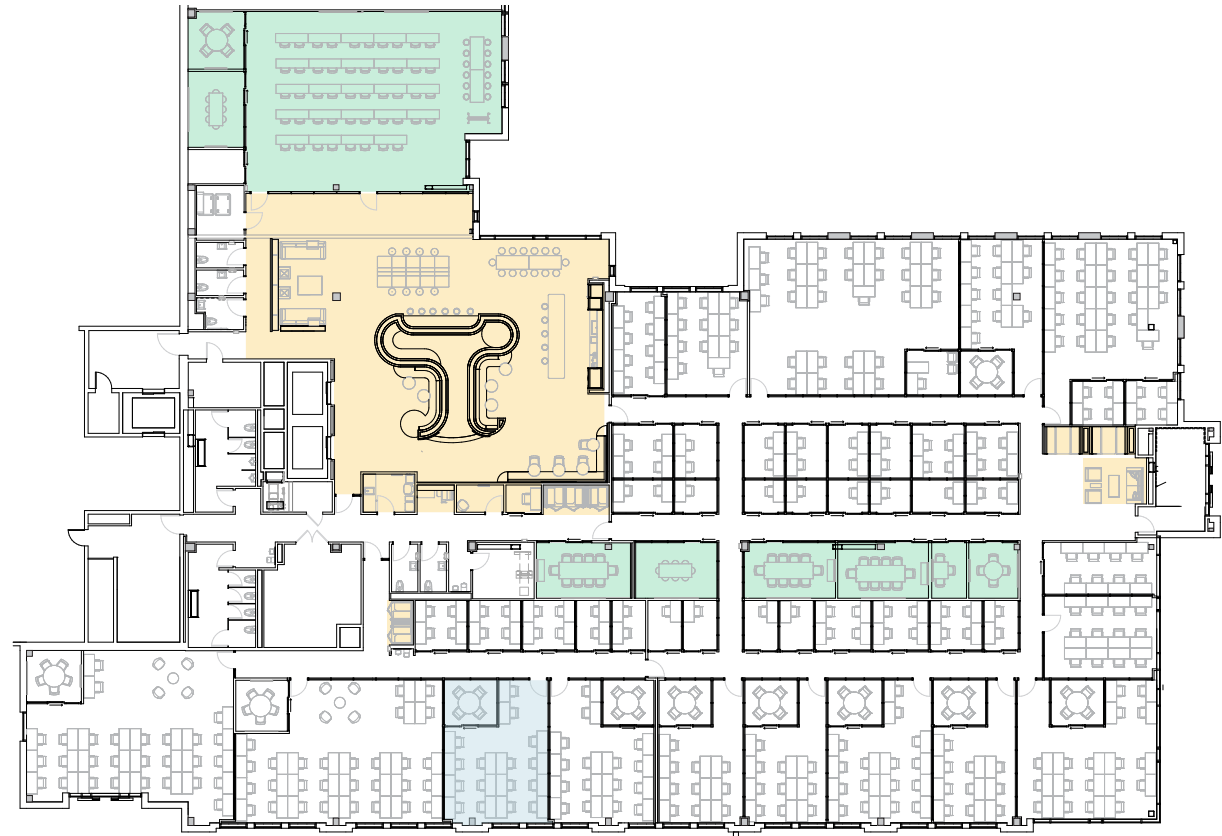


2nd Floor

23,599 RSF

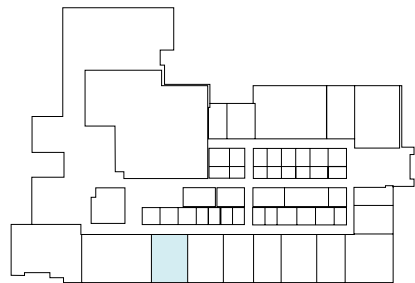
1,086 RSF Suite 02-141

1
MEETING ROOM(S)



SOUTH TYRON STREET

WINONA STREET



SOUTH TYRON STREET

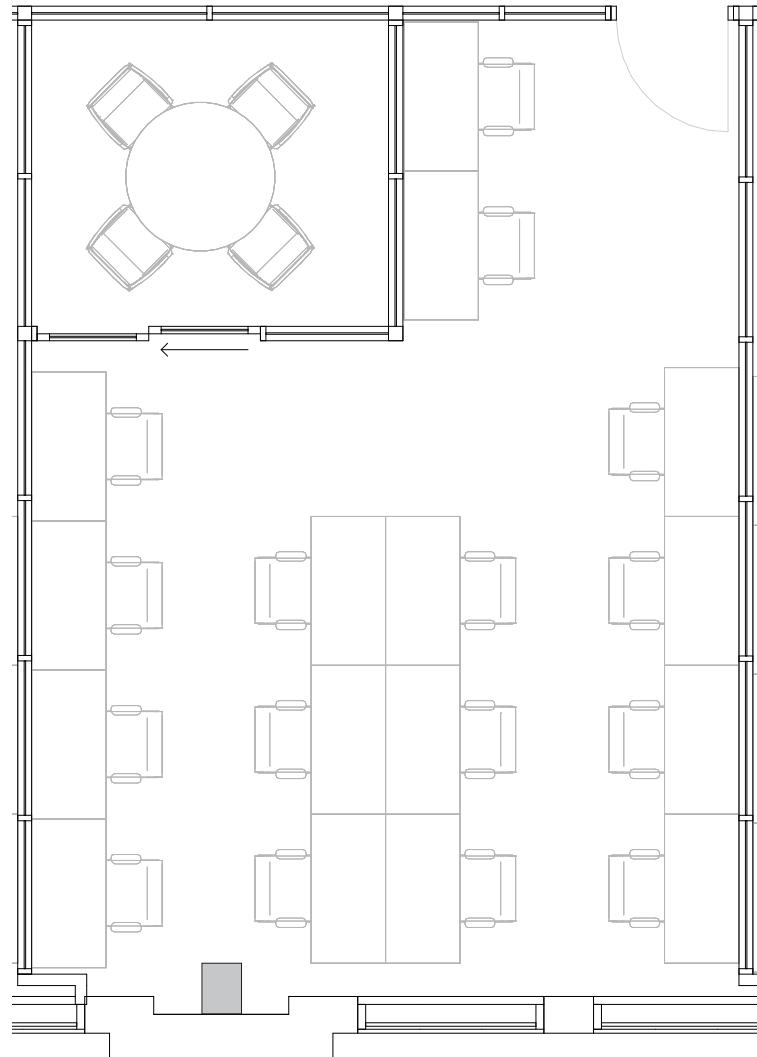
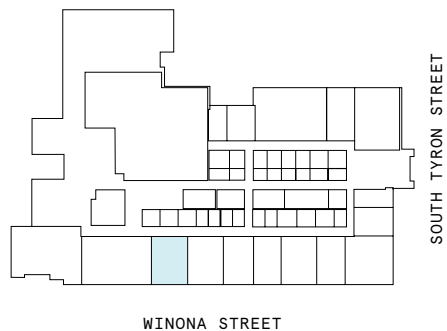
WINONA STREET

Suite 02-141

2nd Floor

1
MEETING ROOM(S)

1,086 RSF
RENTABLE AREA

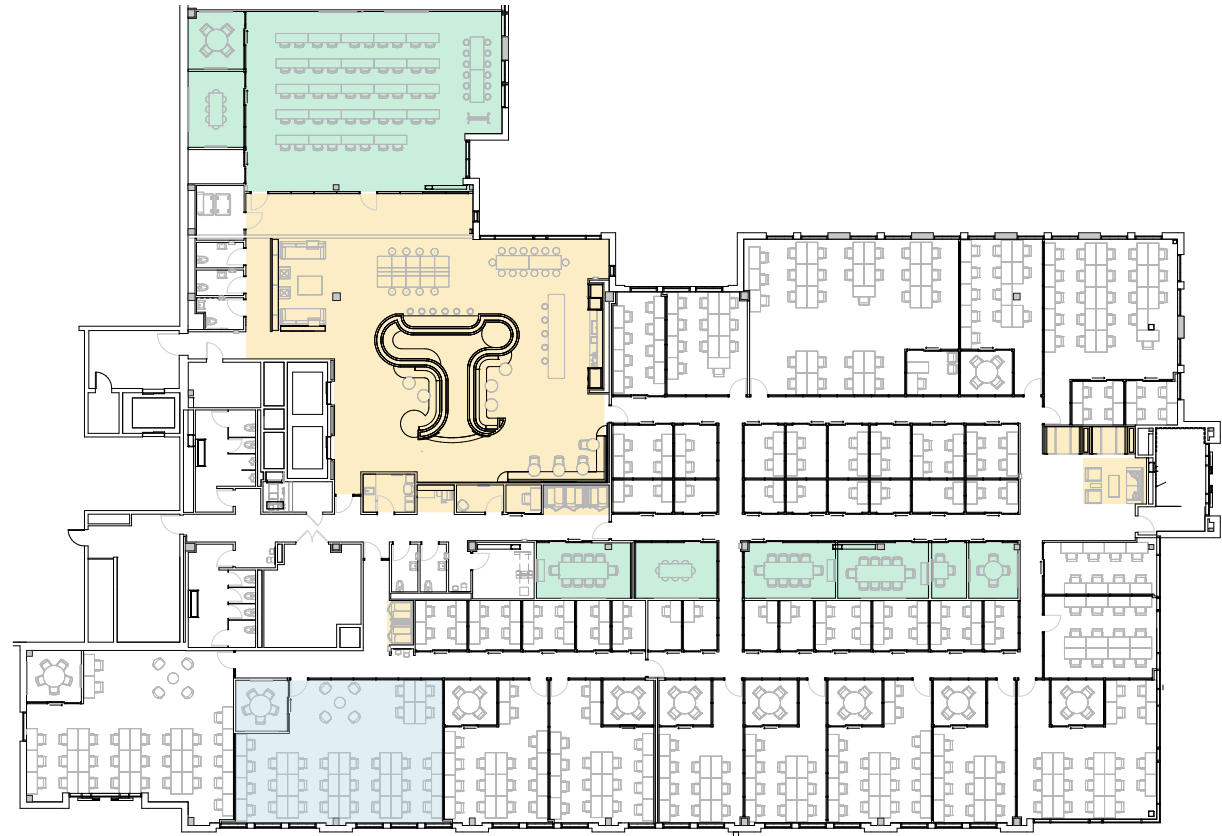


2nd Floor

23,599 RSF

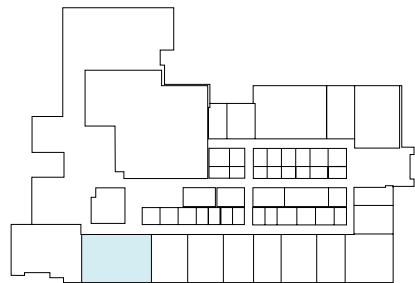
2,183 RSF Suite 02W145

1
MEETING ROOM(S)



SOUTH TYRON STREET

WINONA STREET



SOUTH TYRON STREET

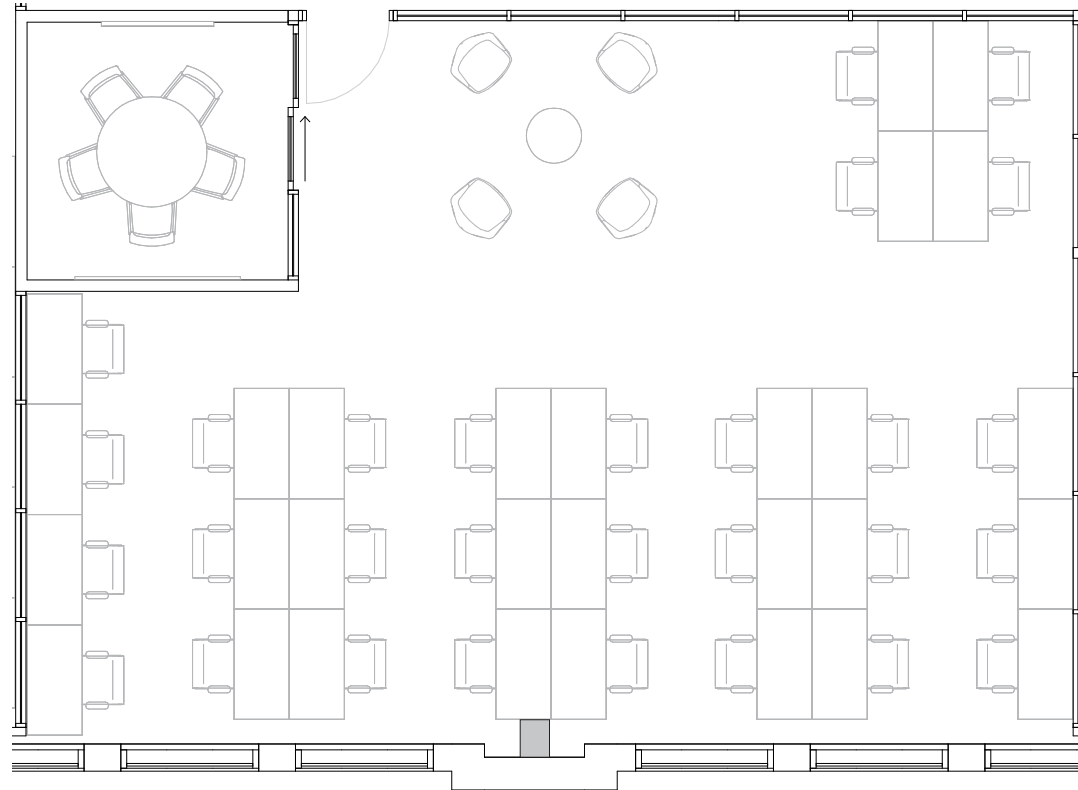
WINONA STREET

Suite 02-145

2nd Floor

1
MEETING ROOM(S)

2,183 RSF
RENTABLE AREA

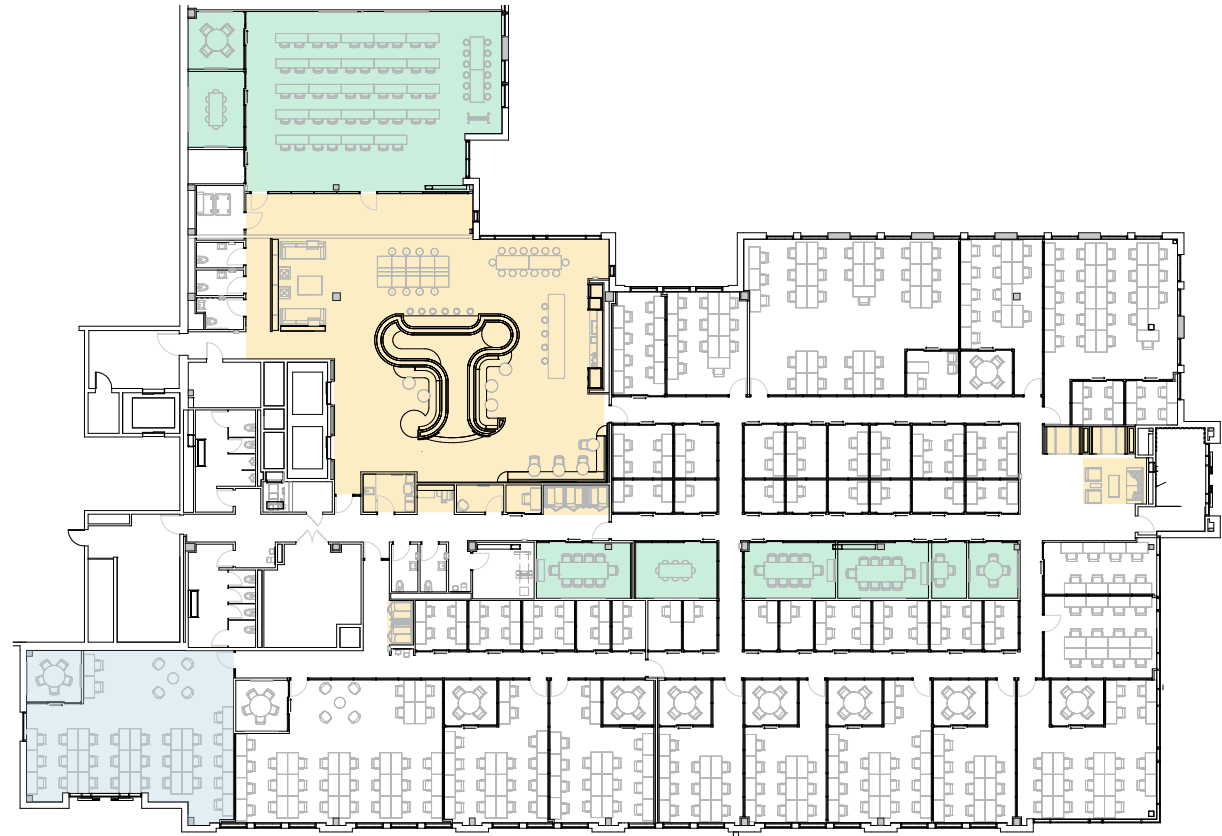


2nd Floor

23,599 RSF

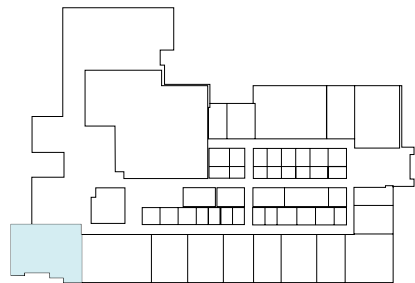
2,354 RSF Suite 02W146

1
MEETING ROOM(S)



SOUTH TYRON STREET

WINONA STREET



SOUTH TYRON STREET

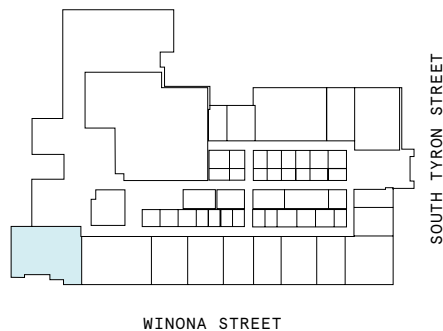
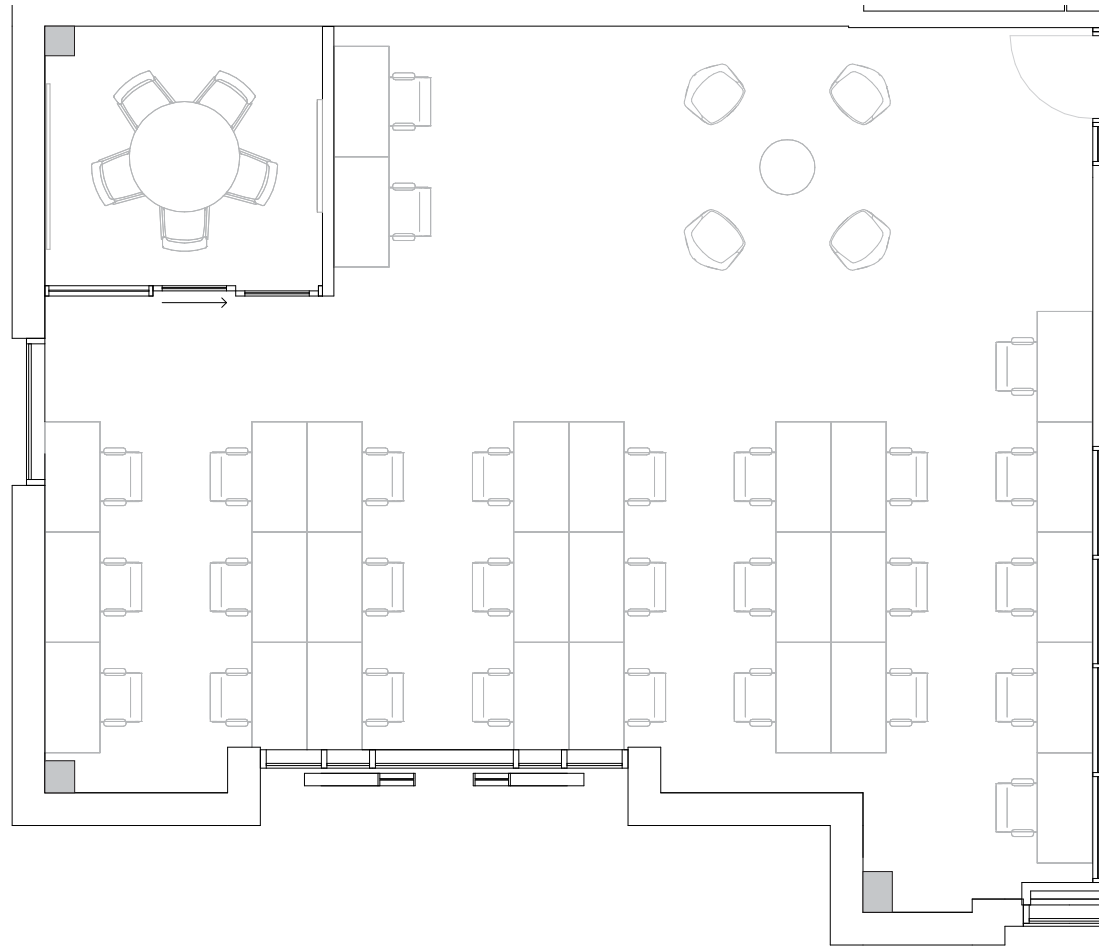
WINONA STREET

Suite 02-146

2nd Floor

1
MEETING ROOM(S)

2,354 RSF
RENTABLE AREA



3rd Floor

21,169 RSF

7

MEETING ROOM(S)

5

SHARED WORKSPACE(S)

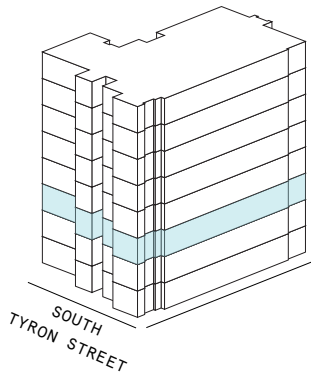
LEGEND

- MEETING ROOM
- SHARED WORKSPACE
- DEDICATED SPACE



SOUTH TYRON STREET

WINONA STREET

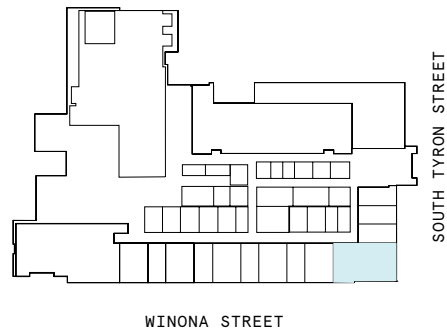


3rd Floor

21,169 RSF

1,578 RSF Suite 03-115

1
MEETING ROOM(S)



Suite 03-115

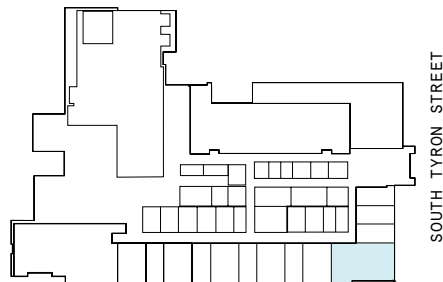
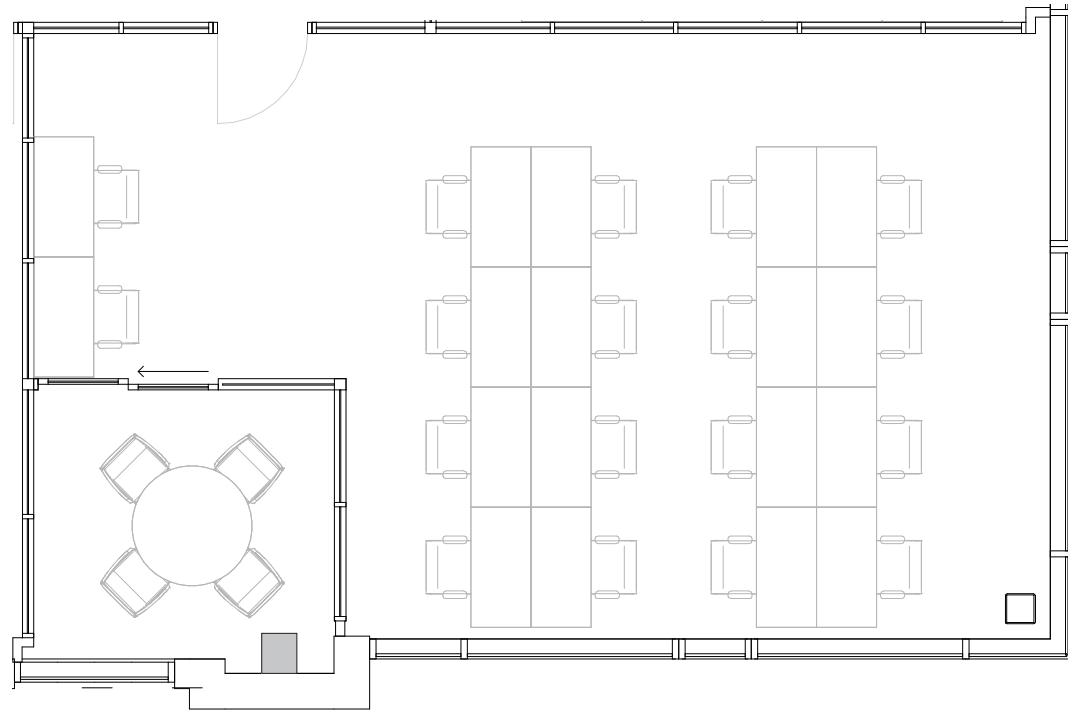
3rd Floor

1

MEETING ROOM(S)

1,578 RSF

RENTABLE AREA



WINONA STREET

SOUTH TYRON STREET

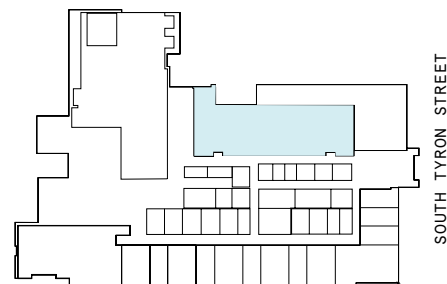
3rd Floor

21,169 RSF

5,455 RSF Suite 03W101

2
MEETING ROOM(S)

1
PRIVATE OFFICE(S)



WINONA STREET

SOUTH TYRON STREET

WINONA STREET

SOUTH TYRON STREET

Suite 03W101

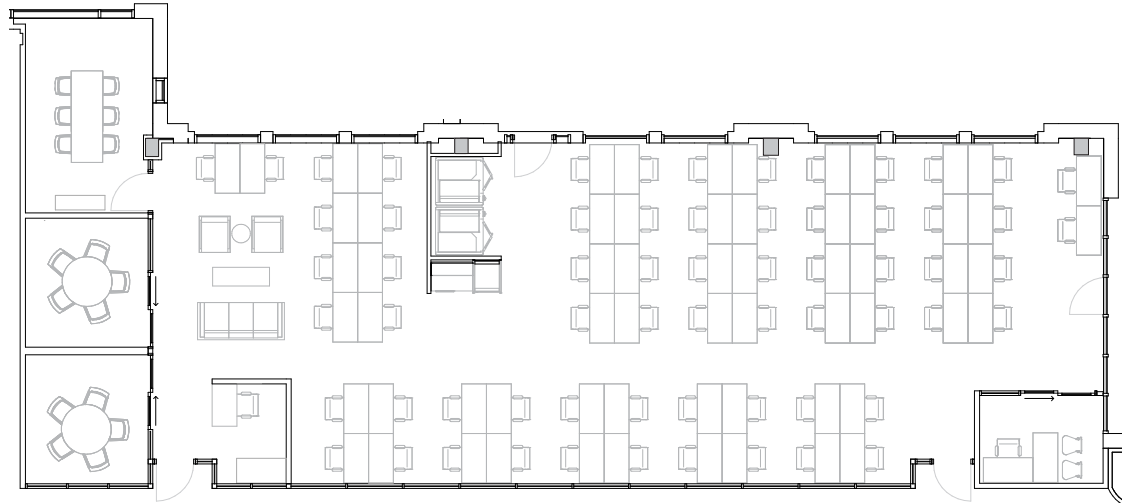
3rd Floor

2

MEETING ROOM(S)

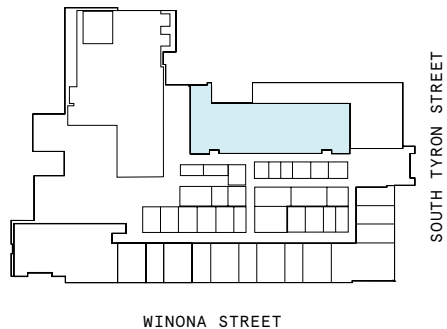
1

PRIVATE OFFICE(S)



5,455 RSF

RENTABLE AREA



3rd Floor

21,169 RSF

3,600 RSF Suite 03W135

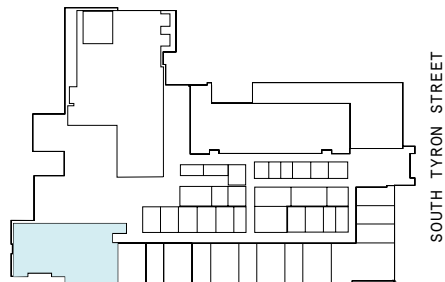
2
MEETING ROOM(S)

1
PRIVATE OFFICE(S)



SOUTH TYRON STREET

WINONA STREET



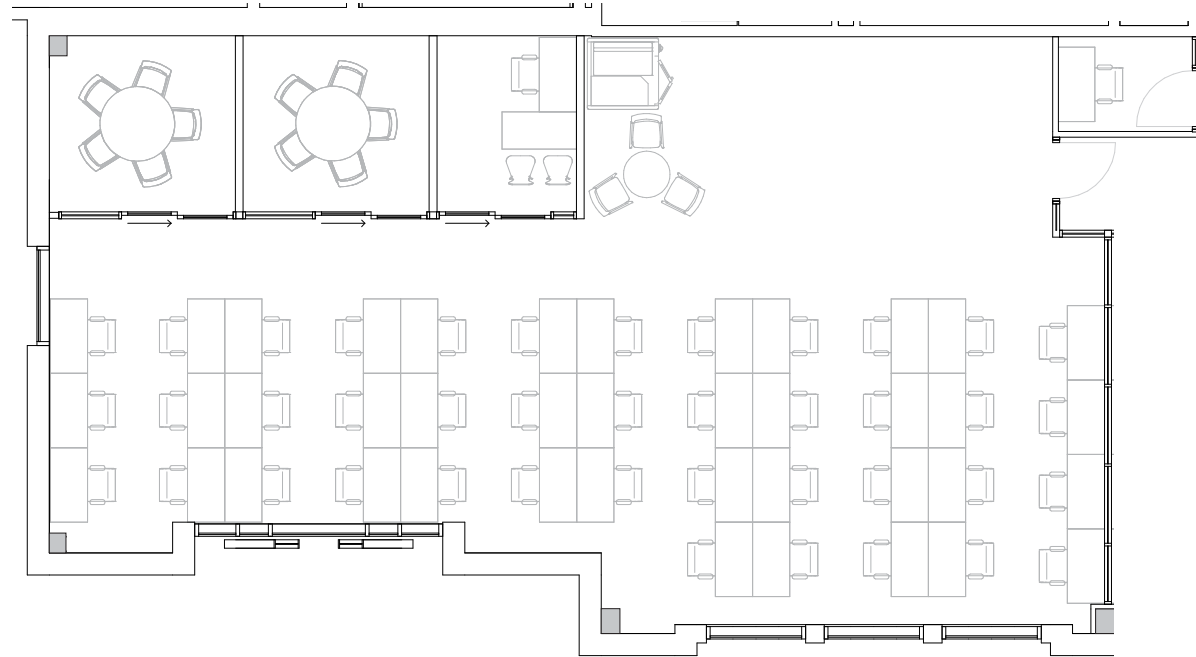
WINONA STREET

Suite 03W135

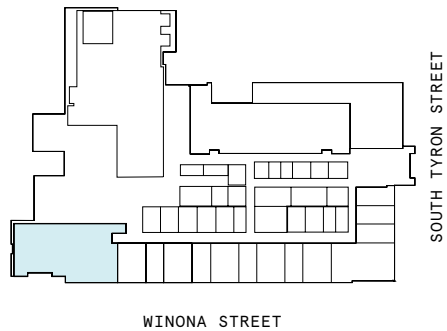
3rd Floor

2
MEETING ROOM(S)

1
PRIVATE OFFICE(S)



3,600 RSF
RENTABLE AREA



Contact

For leasing inquiries please reach out to our team.



Bennett Younts

LEASING DIRECTOR
CHARLES.YOUNTS@WEWORK.COM
704.574.2986

Andrew Tweardy

LEASING MANAGER
ANDREW.TWEARDY@WEWORK.COM
440.309.0412