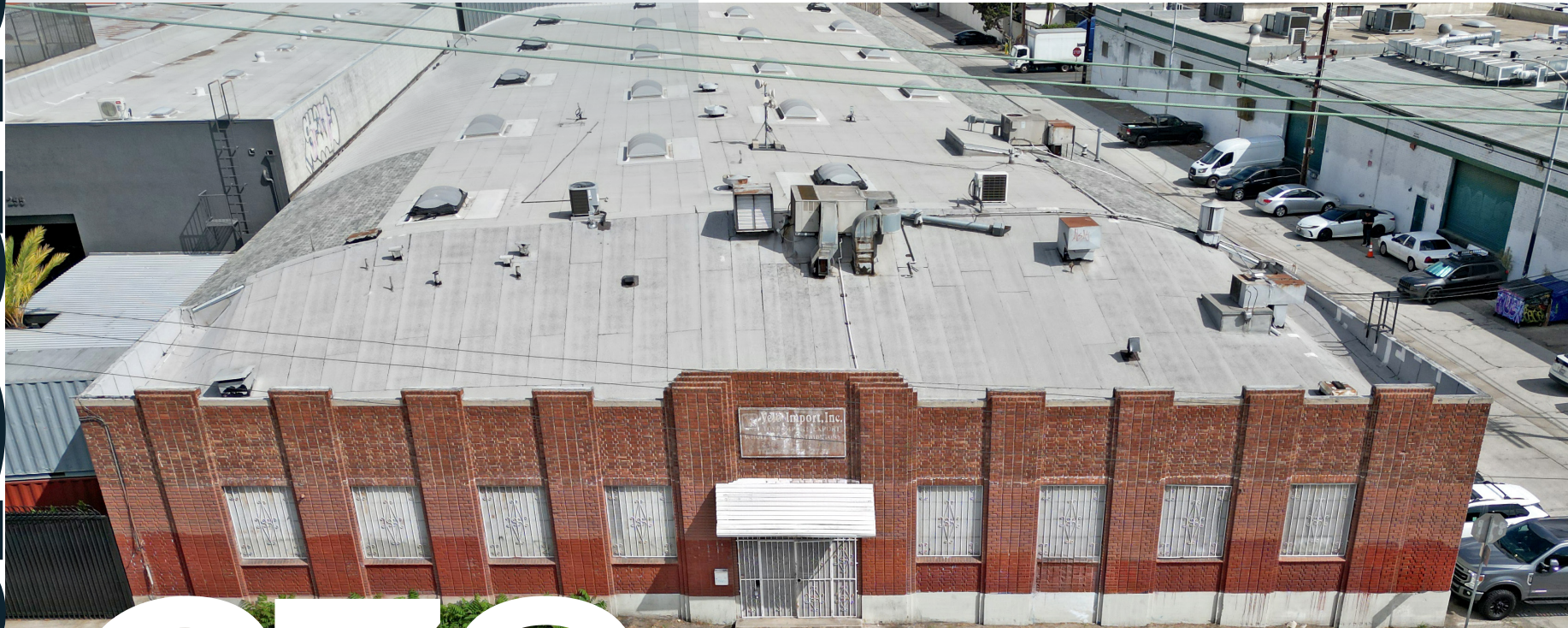


For Sale

FREE STANDING INDUSTRIAL BUILDING

± 30,101 SF



238

S. Mission Rd.

LOS ANGELES | CA 90033

 **DAUM**
COMMERCIAL REAL ESTATE SERVICES

S. Mission Rd. 238



**± 30,101 SF Excellent Free Standing
Functional Brick Building**



± 4,546 SF of Office



**Two 20'x12' Docks with Levelers
and Ability to Accommodate
53' Trailers**



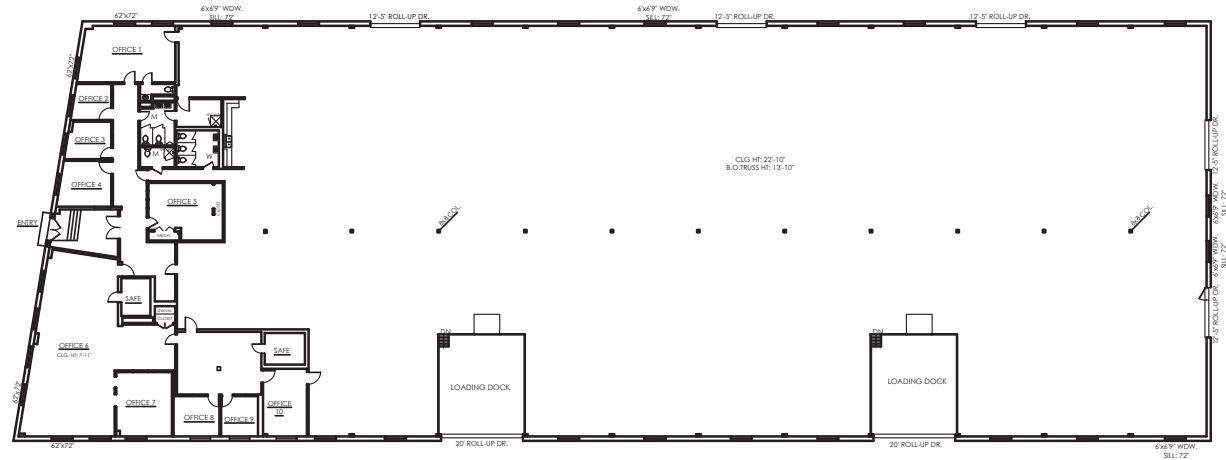
**Prime Downtown
Los Angeles Location**



**Easy Access to the 5, 10, and
101 Freeways, Arts District
& Boyle Heights**

BUILDING HIGHLIGHTS

FLOOR PLAN



*ALL MEASUREMENTS ARE APPROXIMATE AND ARE NOT TO SCALE. MEASUREMENTS ARE INTERIOR MEASUREMENTS, FLOOR PLAN DOES NOT SHOW ALL IMPROVEMENTS.

238

S. Mission Rd.

LOS ANGELES | CA 90033

S. MISSION RD.

S. ANDERSEN ST.



238 S. Mission Rd.

GALLERY



238 S. Mission Rd.

Los Angeles

5 Miles

15 Miles

20 Miles

LOCATION



LAX
18.7 MILES | 40 MINS



METROLINK
NORWALK / SANTA
FE SPRINGS
0.2 MILES | 1 MIN



10 FWY
1.6 MILES

110 FWY
4 MILES

5 FWY
2 MILES

238 S Mission Rd offers a highly functional and adaptable industrial space ideal for warehousing, light manufacturing, or distribution operations.

With its strategic location, convenient freeway access, and efficient layout, this property provides businesses with a practical and cost-effective base in the heart of Los Angeles County's dynamic industrial market.



RESTAURANTS

1. Manuela
2. Wurstkuche
3. Urth Caffe
4. Bavel
5. Zinc Cafe
6. Factory Kitchen
7. Bestia
8. Girl & the Goat
9. Bread Lounge
10. Chuy's Tacos
11. Guzzu Bento-ya

COFFEE

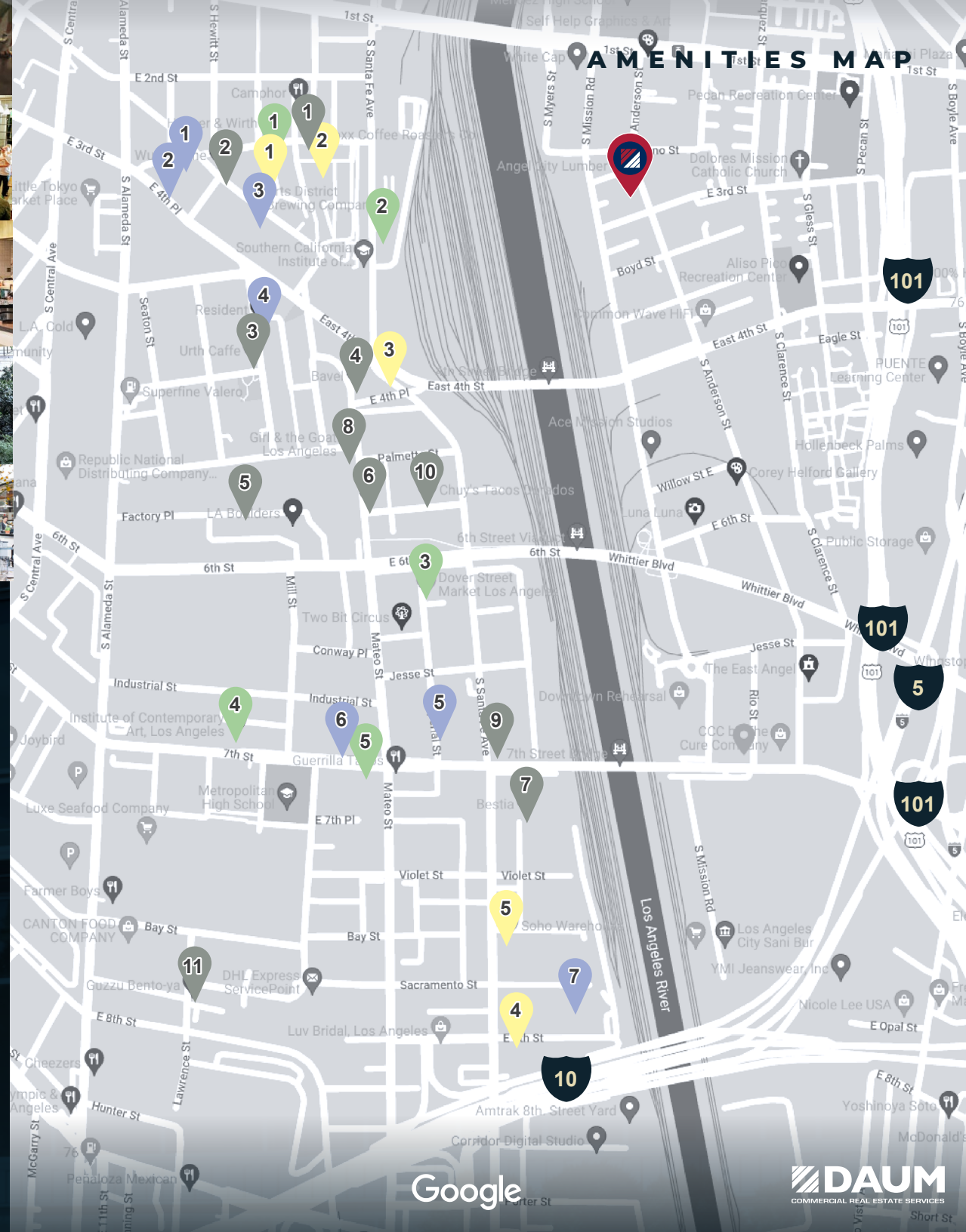
1. Groundwork Coffee Co.
2. Boxx Coffee Roasters
3. Verve Coffee
4. Etiquette Coffee
5. Maru Coffee

BARS & BREWERIES

1. Angel City Brewery
2. Eighty Two
3. Arts District Brewing Co.
4. Resident DTLA
5. Tony's Saloon/ Pizzanista
6. Everson Royce Bar
7. Greencraft Distillery

RETAIL / MUSEUMS

1. Hauser & Wirth
2. Hennessey + Ingalls
3. Dover Street Market
4. ICA LA
5. The Good Liver



238
S. Mission Rd.
LOS ANGELES | CA 90033

MEET THE LISTING AGENTS

IAN GROSSMAN

ASSOCIATE VICE PRESIDENT

P: 213.270.2219 | M: 914.610.5398

igrossman@daumcre.com

CADRE #02179242

DAVID FREITAG

EXECUTIVE VICE PRESIDENT

P: 213.270.2235 | M: 310.413.9390

dfreitag@daumcre.com

CADRE #00855673

D/AQ Corp. #01129558. Maps Courtesy ©Google & ©Microsoft. Although all information is furnished regarding for sale, rental or financing is from sources deemed reliable, such information has not been verified and no express representation is made nor is any to be implied as to the accuracy thereof, and it is submitted subject to errors, omissions, changes of price, rental or other conditions, prior sale, lease or financing, or withdrawal without notice.

www.daumcommercial.com

 **DAUM**
COMMERCIAL REAL ESTATE SERVICES