

FOR LEASE - 8,400 SF Warehouse

65-55 Norman Avenue, City of Trenton,
Mercer County, New Jersey 08618

Block 5401, Lot 10

8,400 SF Warehouse building + vacant land

AMENITIES:

- 8,400 SF warehouse and garage space plus 120' x 60' vacant land for outside storage
- 18' ceilings in warehouse
- Drive-in door
- Hot air gas-fired heating
- Public water & sewer
- New LED lighting
- On-site parking
- LEASE RATE: \$7.50 SF Triple Net



Offered exclusively by:

Joseph R. Ridolfi & Associates, LLC
Commercial Realtors

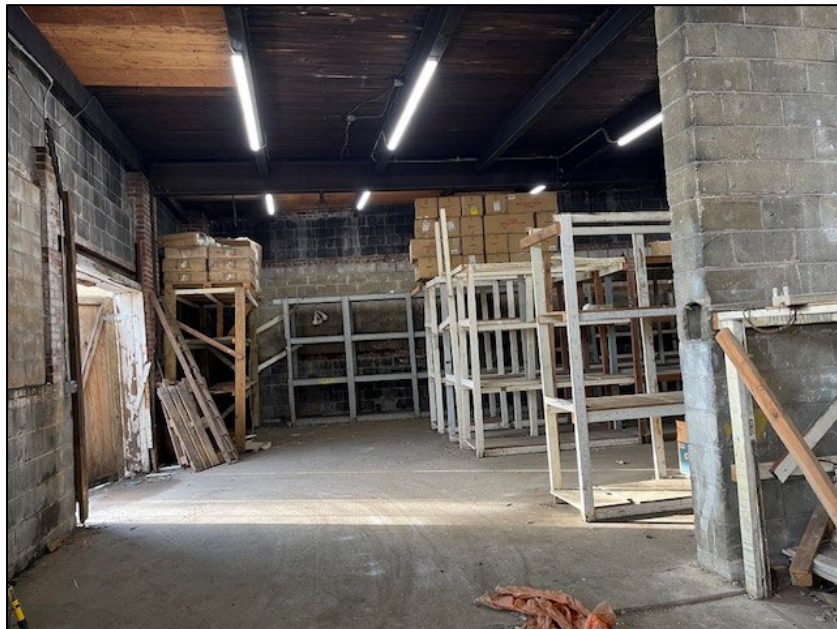
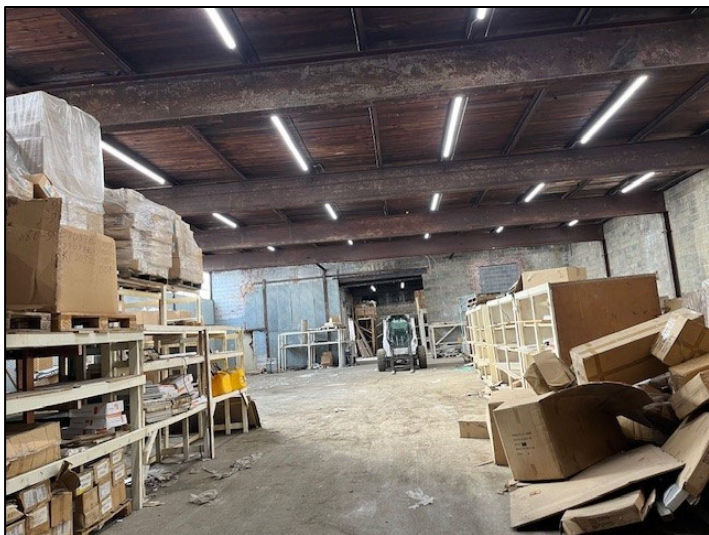
Phone: 609-581-4848 • Fax: 609-581-5511

Website: ridolfi-associates.com

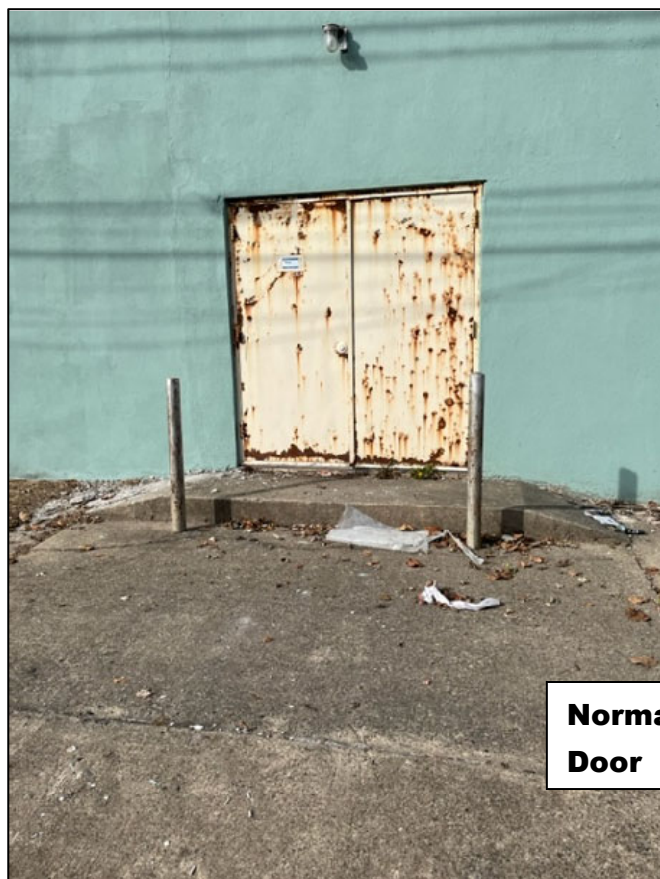
Email: ridolfi@ridolfi-associates.com

All information contained herein has been supplied by sources deemed reliable. Accordingly, no warranty or representation, express or implied, is made as to the accuracy of the information contained herein and same is submitted subject to errors, omissions, change of price, rental or other conditions, withdrawal without notice, and to any special listing conditions imposed by our principals.

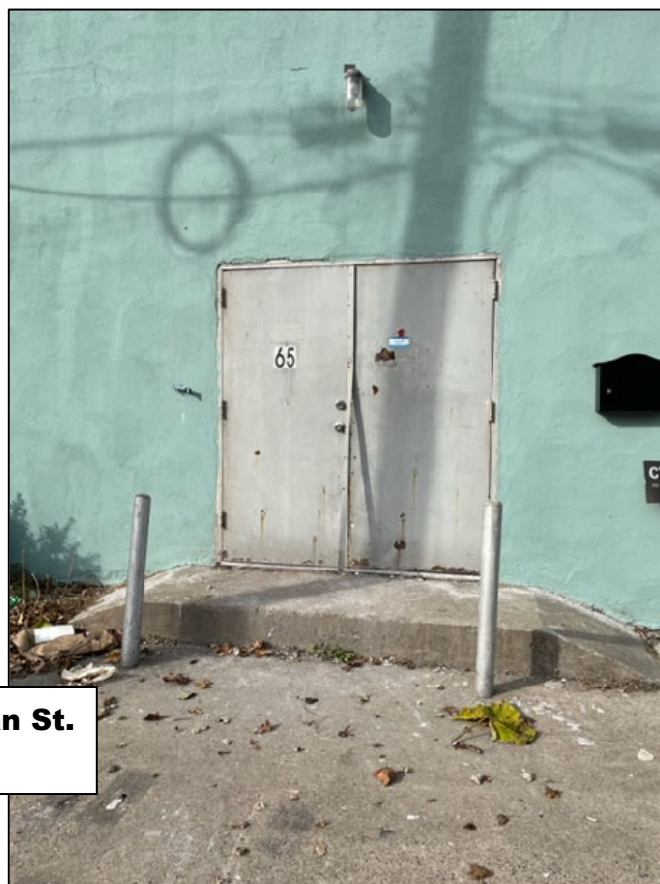
65-55 Norman Ave, Trenton, NJ 08618



65-55 Norman Ave, Trenton, NJ 08618



**Norman St.
Door**



65-55 Norman Avenue, Trenton, NJ 08618



65-55 Norman Ave, Trenton, NJ 08618

