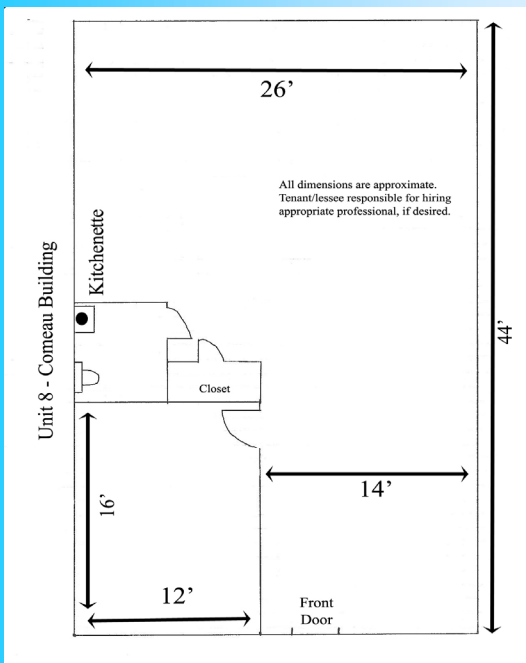


Office/Commercial Units for Lease

Unit 8, Comeau Building
6 Mary Clark Drive, Hampstead, NH



Unit 8 is a bright, nicely configured corner unit with 1,144 +/- SF in great location. Consists of a large windowed office or conference room, open area, private bath, reception area and kitchenette. Unit has a private front entrance. Unit exceptionally designed with internal windows to facilitate a light and comfortable working atmosphere. Newly painted and in exceptional condition. Only \$1,300/month



Scott Reiff

603-845-9972

800-9VERANI x 2199

E-mail: Scott.Reiff@Verani.com



BERKSHIRE HATHAWAY
Verani Realty
Commercial



General Unit Information

*Unit #: 6 Mary Clark Dr., Unit 8, Hampstead, NH 03841

Full description individual unit: Unit 8 is a bright, nicely configured corner unit with 1,144 +/- SF in great location. Consists of a large windowed office or conference room, open area, private bath, reception area and kitchenette. Unit has a private front entrance. Unit exceptionally designed with internal windows to facilitate a light and comfortable working atmosphere. Newly painted and in exceptional condition.

* Unit Pricing: \$1,300 modified gross (plus utilities) per month.

Site Data

* Unit size: 1,144 SF

▽* Unit located on floor: 1

▽ Number of Bathrooms within unit or utilized by unit: 1 bathroom inside unit.

Included in unit: Furniture: N/A Security system: As is-if installed Phone system: N/A Other: N/A

▽* Parking Spaces for unit: Use of numerous parking areas throughout complex and parking in front of unit.

* Number of docks: 0 Door height: _____ NA

* Number of drive-in doors: _____ Door height: _____ NA

* Communications network: (DSL, cable, phone line only, etc.) Cable only

Signage: Signage on building marquee

▽ Floors (Carpeted, concrete, tile, etc.) Mostly carpeted. Kitchenette is tiled.

▽* Ceiling Height: 8.5 feet. Varied

* Heat Source (Fuel)/Heat Type: Gas-Propane

Air Conditioning Source/Type: Central

* Handicapped Access: Entry is from ground level and there is an elevator in the building.

Alarm Service: Fire alarm only

▽ Sprinklers: Wet Dry None: None

* Electrical Service: 100 amp

Additional Features: Unit can be combined with Unit 7 if desired.

Subject to errors, omissions, prior sale, change or withdrawal without notice. This information has been secured from sources deemed reliable, but we make no representation or warranties, expressed or implied, as to accuracy of the information.

Unit 8 - Comeau Building

