

1686 – 1752 HOWARD STREET  
DETROIT, MICHIGAN

MEDICAL FOR SALE OR LEASE

For Sale: 35,219 Square Feet

For Lease: 8,075 Square Feet



**SIGNATURE  
ASSOCIATES**  
KNOW SIGNATURE | KNOW RESULTS

**CORKTOWN HEALTH**



## PROPERTY FEATURES

- 8,075 square feet available for lease and/or 35,219 square foot building for sale
  - 8,075 square feet of warehouse space with loading dock
  - 27,144 square feet of modern medical buildout: LVT flooring, LED lighting, dental clinic and pharmacy
- Adjacent to Ralph C. Wilson Centennial Park
- Surrounded by vibrant Corktown redevelopment
- Easy access to residential & business community
- Excellent investor or user opportunity
- Lease Rate: \$20.00/sq. ft. G + E
- Sale Price: \$5,282,850 (\$150.00/sq. ft.)



For more information, please contact:

**CHRIS MONSOUR**  
(248) 948 0107  
cmonsour@signatureassociates.com

**DAVE MILLER**  
(248) 948 4183  
dmiller@signatureassociates.com

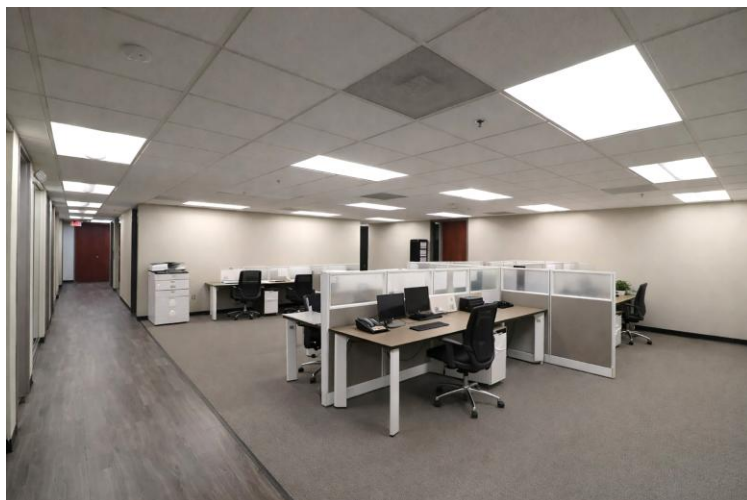
**DAN MORROW**  
(248) 799 3144  
dmorrow@signatureassociates.com

# 1686 – 1752 Howard Street – Detroit, Michigan

## Medical For Sale or Lease

8,075 - 35,219  
Square Feet  
AVAILABLE

### Interior Photos



For more information, please contact:

**CHRIS MONSOUR**  
(248) 948 0107

**DAVE MILLER**  
(248) 948 4183

**DAN MORROW**  
(248) 799 3144

**SIGNATURE ASSOCIATES**  
One Towne Square, Suite 1200  
Southfield, MI 48076  
[www.signatureassociates.com](http://www.signatureassociates.com)

# 1686 – 1752 Howard Street – Detroit, Michigan

Medical For Sale or Lease

8,075 - 35,219  
Square Feet  
AVAILABLE

## Interior Photos



For more information, please contact:

**CHRIS MONSOUR**  
(248) 948 0107

**DAVE MILLER**  
(248) 948 4183

**DAN MORROW**  
(248) 799 3144

**SIGNATURE ASSOCIATES**  
One Towne Square, Suite 1200  
Southfield, MI 48076  
[www.signatureassociates.com](http://www.signatureassociates.com)

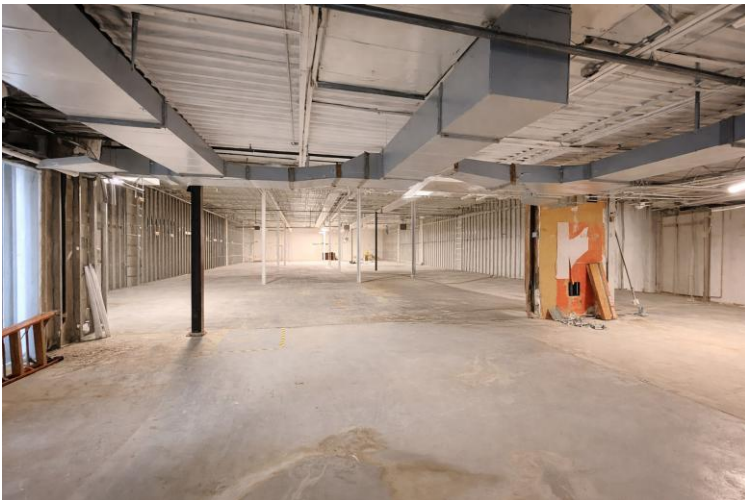
# 1686 – 1752 Howard Street – Detroit, Michigan

Medical For Sale or Lease

8,075 - 35,219  
Square Feet  
AVAILABLE

## Interior Photos

**Unfinished Office/Warehouse Available: 8,075 Square Feet**



For more information, please contact:

**CHRIS MONSOUR**  
(248) 948 0107

**DAVE MILLER**  
(248) 948 4183

**DAN MORROW**  
(248) 799 3144

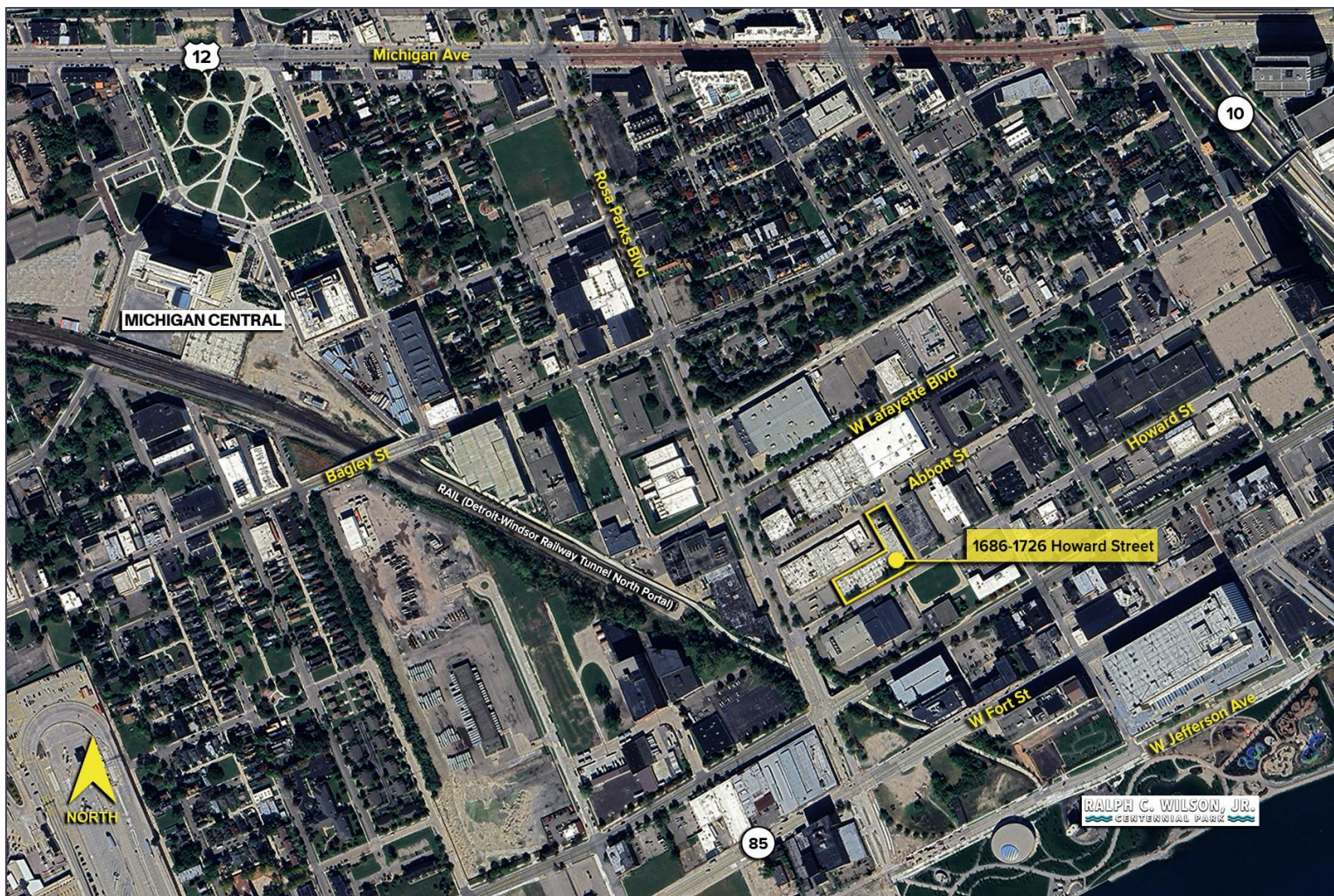
**SIGNATURE ASSOCIATES**  
One Towne Square, Suite 1200  
Southfield, MI 48076  
[www.signatureassociates.com](http://www.signatureassociates.com)

# 1686 – 1752 Howard Street – Detroit, Michigan

Medical For Sale or Lease

8,075 - 35,219  
Square Feet  
AVAILABLE

Aerial



For more information, please contact:

**CHRIS MONSOUR**  
(248) 948 0107

**DAVE MILLER**  
(248) 948 4183

**DAN MORROW**  
(248) 799 3144

**SIGNATURE ASSOCIATES**  
One Towne Square, Suite 1200  
Southfield, MI 48076  
[www.signatureassociates.com](http://www.signatureassociates.com)