

# SOUTHLAKE TOWN SQUARE™



SOUTHLAKE, TEXAS



**250,000 SF OFFICE SPACE** SURROUNDED BY **OVER 600,000 SF**  
OF HIGHLY WALKABLE, TOP RETAIL, DINING, AND ENTERTAINMENT

**CBRE**



# SOUTHLAKE TOWN SQUARE™

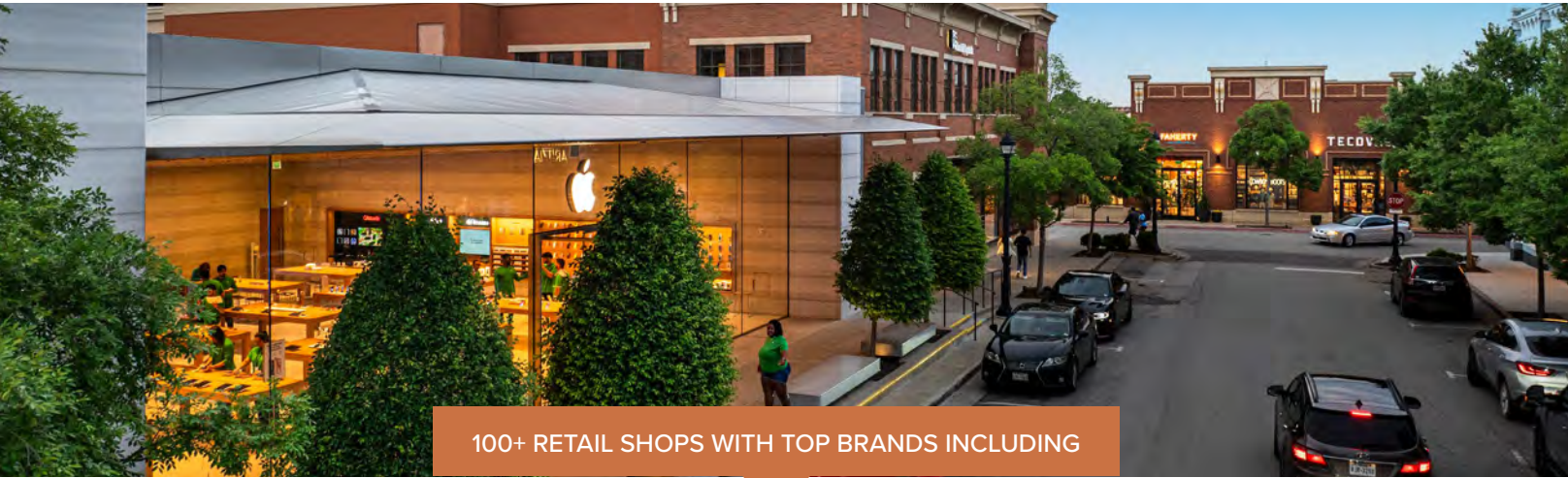
MUCHACHO, DEL FRISCO'S GRILLE, FERAH, FLOWER CHILD, NIKKO SUSHI, SHAKE SHACK, TRULUCK'S & MORE



A DYNAMIC MIX OF RETAIL, DINING, ENTERTAINMENT, RESIDENTIAL AND HOTEL



840,000 SF MIXED-USE DEVELOPMENT  
200,000 SF OF OFFICE



100+ RETAIL SHOPS WITH TOP BRANDS INCLUDING

APPLE, LULULEMON, TESLA, JOHNNIE O, VUORI, WARBY PARKER, BARNES & NOBLE & MORE



OVER 25 RESTAURANTS



248-KEY HILTON HOTEL ON-SITE



# SOUTHLAKE TOWN SQUARE



## MASTER

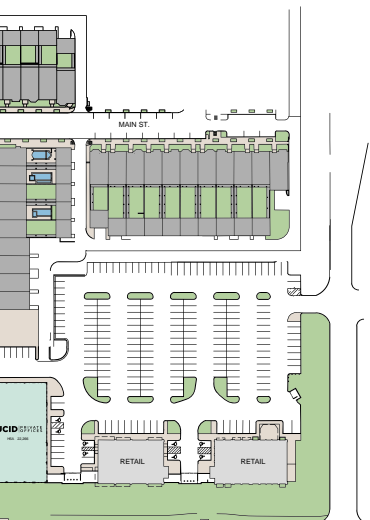
STATE HWY 114 - 107,173 CPD



SOUTHLAKE BOULEVARD (FM 1709)



## OFFICE SITE PLAN



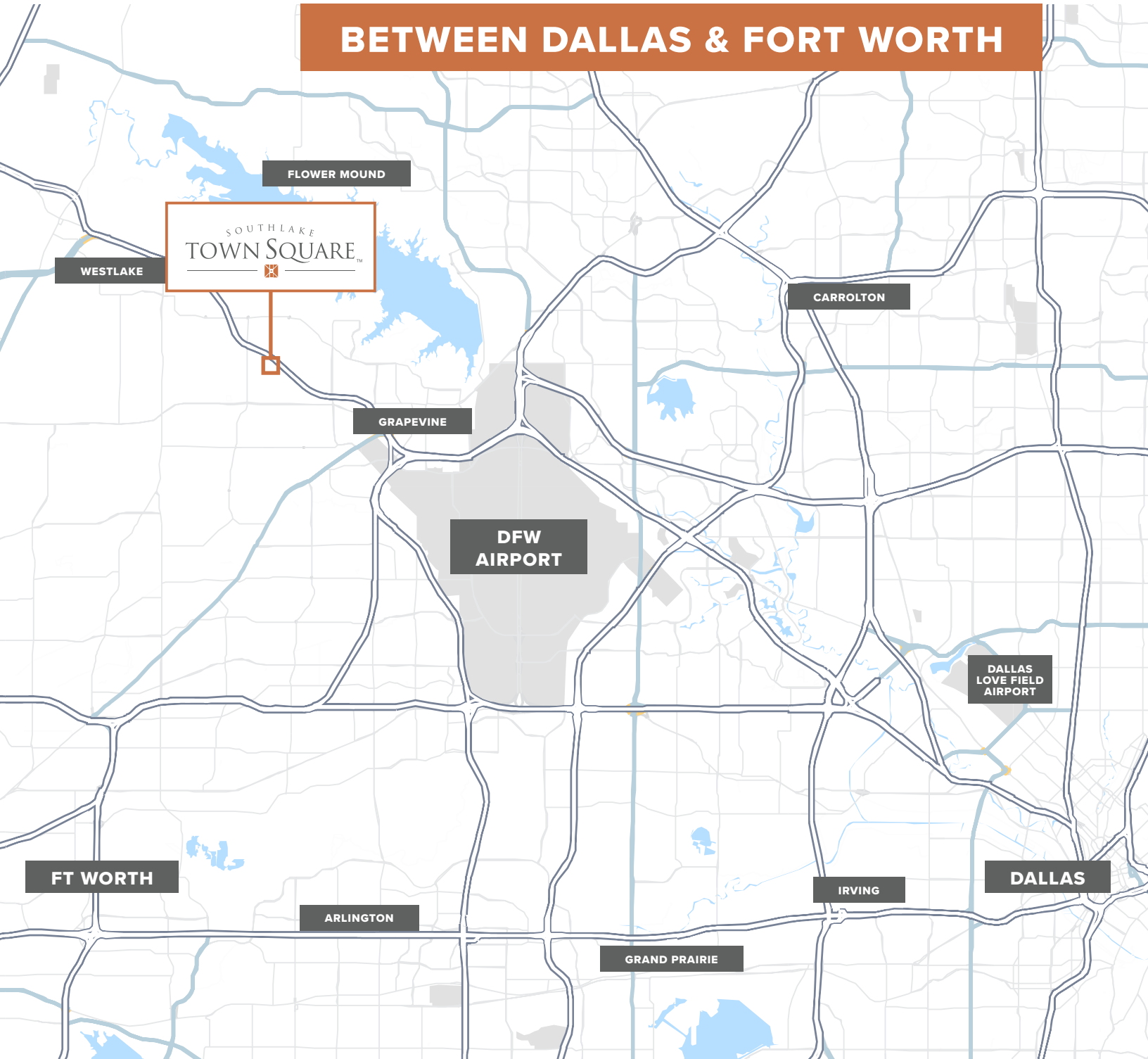


# SOUTHLAKE TOWN SQUARE™



Centrally Located

**BETWEEN DALLAS & FORT WORTH**







**12 MINUTES TO DFW INTERNATIONAL AIRPORT**



**5 MINUTES TO HWY 121  
AND EASY ACCESS TO HWY  
114 BUSINESS CORRIDOR**



**30 MINUTES TO DALLAS CBD**



**30 MINUTES TO FT WORTH CBD**



**30 MINUTES TO DALLAS LOVE  
FIELD AIRPORT**



# SOUTHLAKE TOWN SQUARE™



SOUTHLAKE, TEXAS

FOR ADDITIONAL INFORMATION, PLEASE CONTACT

**TREY SMITH**

Executive Vice President

1 214 979 5651

[trey.smith@cbre.com](mailto:trey.smith@cbre.com)

**JULEE AMPARO**

Associate

1 214 979 6121

[julee.amparo@cbre.com](mailto:julee.amparo@cbre.com)

## CBRE

© 2025 CBRE, Inc. All rights reserved. This information has been obtained from sources believed reliable, but has not been verified for accuracy or completeness. You should conduct a careful, independent investigation of the property and verify all information. Any reliance on this information is solely at your own risk. CBRE and the CBRE logo are service marks of CBRE, Inc. All other marks displayed on this document are the property of their respective owners, and the use of such logos does not imply any affiliation with or endorsement of CBRE. Photos herein are the property of their respective owners. Use of these images without the express written consent of the owner is prohibited.