

RETAIL

340 METROPOLITAN AVENUE

WILLIAMSBURG | BROOKLYN, NY 11211

WRG | WINICK REALTY GROUP

SCAN ME TO LEARN MORE



340 Metropolitan Avenue
winick.com

WRG | WINICK REALTY GROUP

RETAIL FOR LEASE

340 Metropolitan Avenue
winick.com

WRG | WINICK REALTY GROUP

212.792.2638

MICHAEL SHKRELI
ELI GOLD

340 Metropolitan Avenue
winick.com

338

RETAIL

340 METROPOLITAN AVENUE

WILLIAMSBURG | BROOKLYN, NY 11211

Retail Premises

Ground Floor
375 SF

Frontage
11 FT

Possession

Immediate

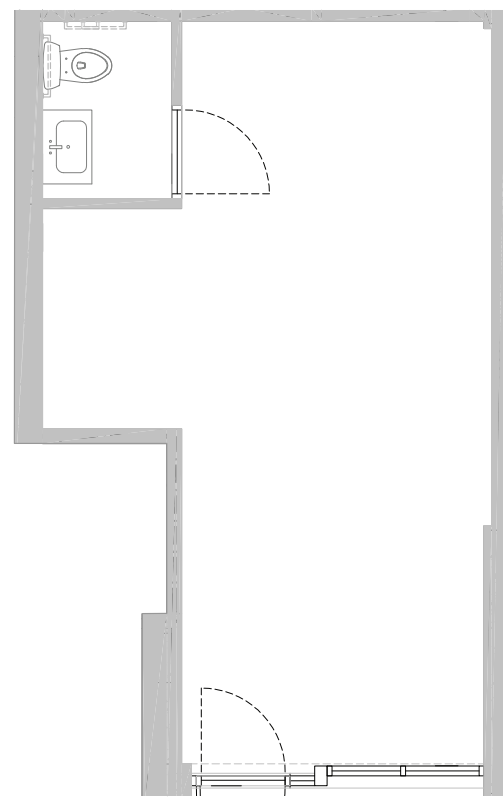
Asking Price

Upon Request

Property Details

- Retail for lease at the base of a newly developed building
- Near Metropolitan Avenue & Lorimer Street Subway Stations
- Fantastic regional & local co-tenants
- Column-free space
- Existing HVAC & ADA compliant bathroom in-place
- New direct long term lease

Retail Layout



11'
METROPOLITAN AVENUE

Neighbors

The **COMMODORE**



MILK BAR

de Mole

JUST SALAD



THE BUTCHER'S DAUGHTER
JUICE BAR & CAFE
NEW YORK

NEIGHBORHOOD RETAILER MAP



Demographics for 11211

0.5 Mile Radius



Population
48,969



Total Households
25,960



Consumer Spend
\$1.1 B



Average Income
\$183,300

RETAIL

340 METROPOLITAN AVENUE

WILLIAMSBURG | BROOKLYN, NY 11211

FOR MORE INFORMATION, PLEASE CONTACT OUR EXCLUSIVE AGENTS

MICHAEL SHKRELI

(212) 792-2638

michael@winick.com

ELI GOLD

(212) 792-2626

egold@winick.com

WRG | WINICK
REALTY
GROUP

Winick Realty Group LLC, Licensed Real Estate Brokers

655 Third Avenue, 24th Floor | New York, NY 10017 | Tel: 212.792.2600 | Fax: 212.792.2660 | www.winick.com

ALTHOUGH ALL INFORMATION REGARDING PROPERTY FOR SALE, RENTAL OR FINANCING IS FROM SOURCES DEEMED RELIABLE SUCH INFORMATION HAS NOT BEEN VERIFIED, AND NO EXPRESS REPRESENTATION IS MADE NOR IS ANY TO BE IMPLIED AS TO THE ACCURACY THEREOF, AND IT IS SUBMITTED SUBJECT TO ERRORS, OMISSIONS, CHANGE OF PRICE, RENTAL OR OTHER CONDITIONS, PRIOR SALE, LEASE OR FINANCING, OR WITHDRAWAL WITHOUT NOTICE.