



FOR LEASE

Bright & Inspiring Creative Office Space in the Heart of West Berkeley's Design Loop



2530 San Pablo
Berkeley, CA 94702



1st Floor, Suite B



1st Floor, Suite C-2



1st Floor, Suite J

PROPERTY HIGHLIGHTS

- Charming well-maintained building
- Onsite parking in gated lot available
- High Ceilings w/ Natural Light
- Heating and A/C throughout building
- Ground-Floor ADA compliant
- Walkable to many restaurants and stores
- Home to many non-profits, professional offices and exercise uses.

AVAILABLE SPACE (3)

Suite B

±1,298 SF
\$3,500



SCAN OR CLICK TO VIEW VIRTUAL TOUR

Suite C-2

±400 SF
\$1,500



SCAN OR CLICK TO VIEW VIRTUAL TOUR

Suite J

±2,132 SF
\$5,500



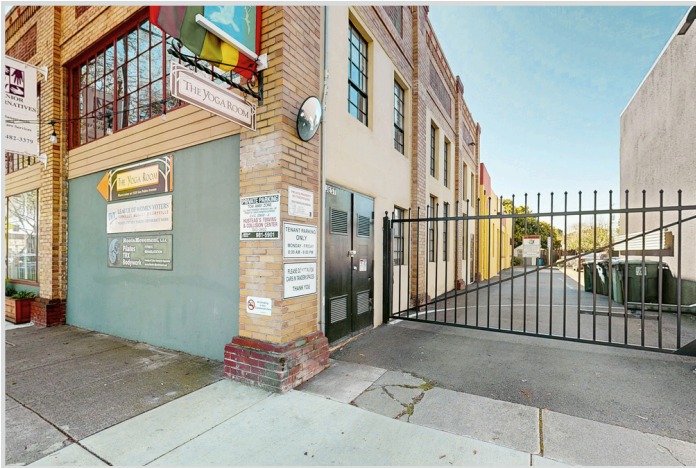
SCAN OR CLICK TO VIEW VIRTUAL TOUR

Virtual Tour – Click or Scan Here

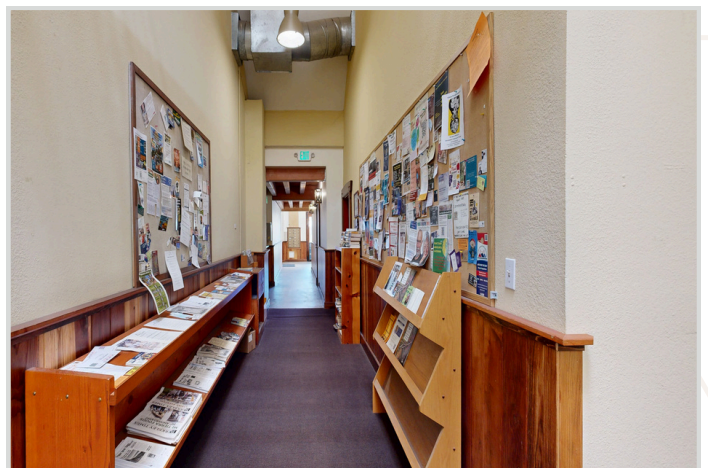
Property Overview

- Next to eateries such as: Lao Garden, Yeti Restaurant, Cafe Chiave and Anchalee Thai Cuisine
- Other tenants include: Ecology Center, Senior Alternatives, Yoga Room, and Innerstellar Pilates
- One block from new Kaiser Permanente office project, in West Berkeley's Design Loop
- Spaces available sizing from ±400 SF to ±2,132 SF
- Layouts ranging from complete open plan to four private offices
- Units can be delivered turn-key

FRONTAGE AND PARKING - 2530 SAN PABLO AVE

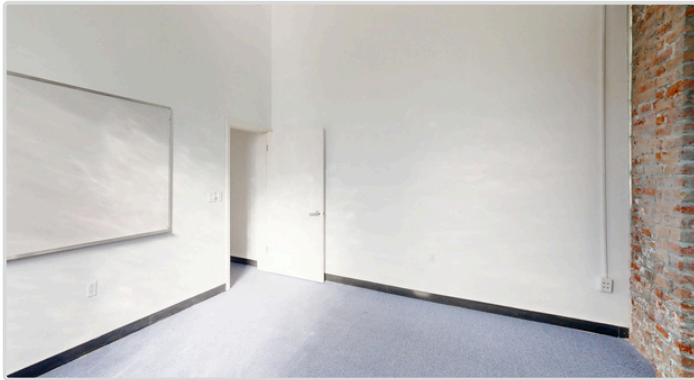
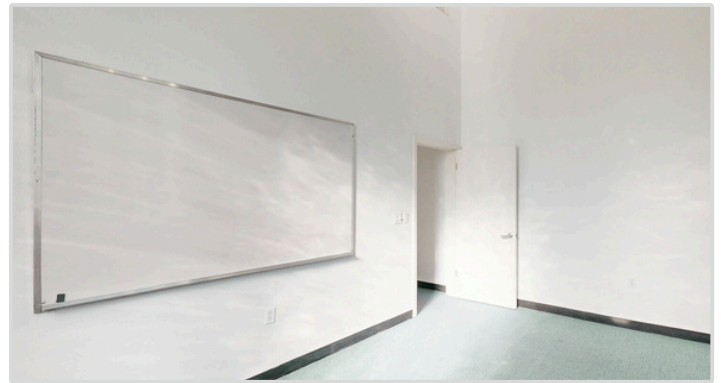


COMMON AREAS - 2530 SAN PABLO AVE

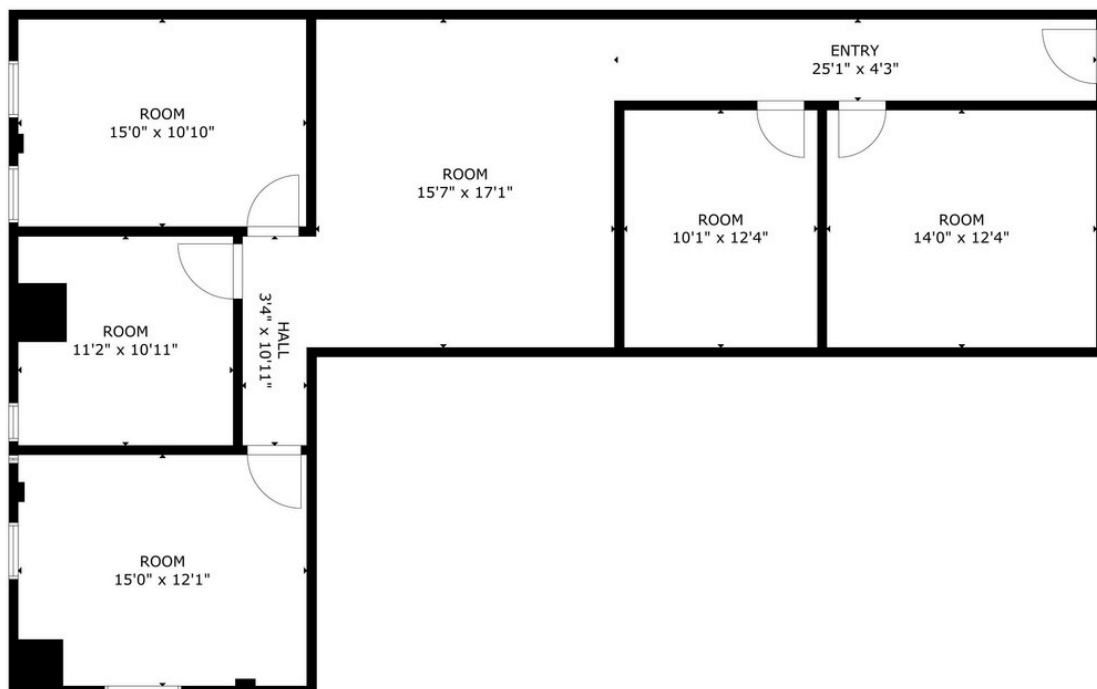


About the Suite B

- Five private offices
- Very high ceilings
- Great natural light
- HVAC
- Off-street parking available

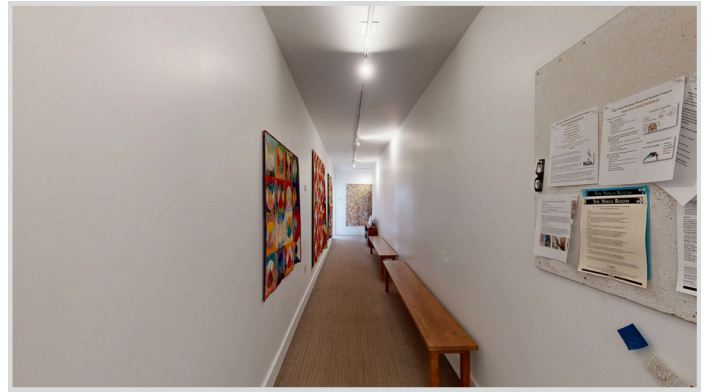


SUITE B: ±1,298 SF – FLOOR PLAN

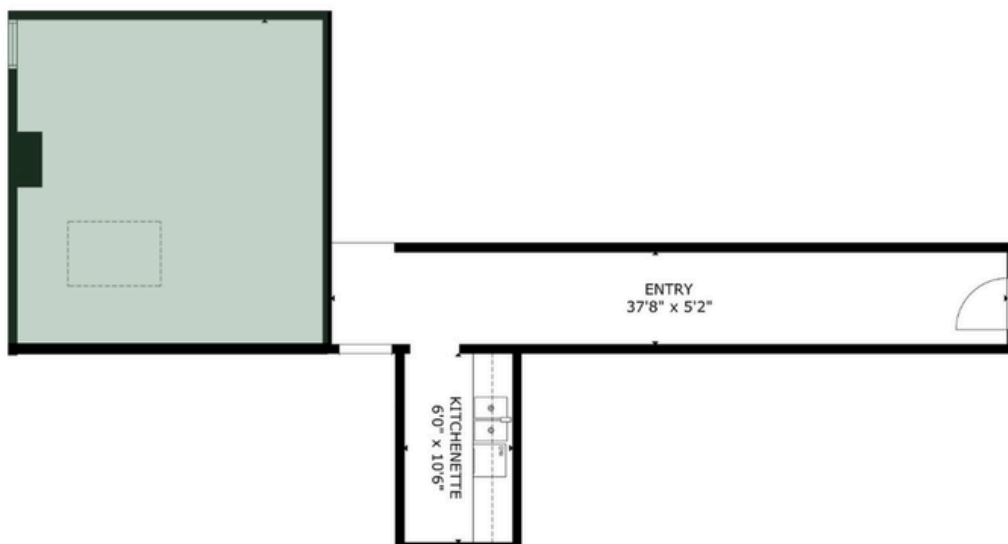


About the Suite C-2

- Beautifully built-out turn-key exercise studio
- High ceilings and natural light
- Shared waiting vestibule and kitchen with Yoga Room
- Off-street parking available



SUITE C-2: ±400 SF – FLOOR PLAN

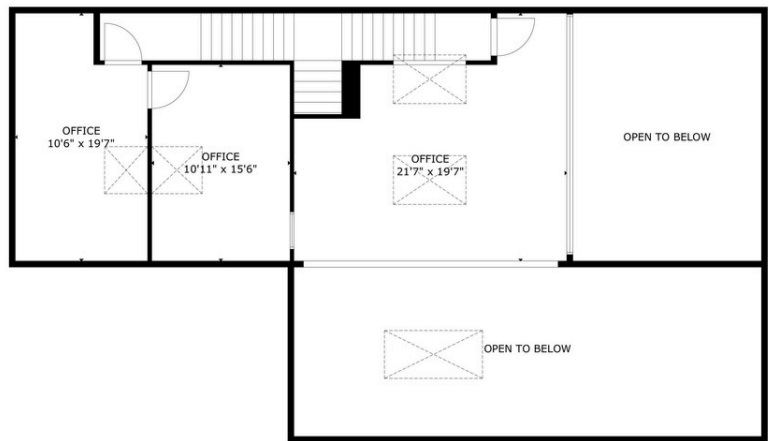
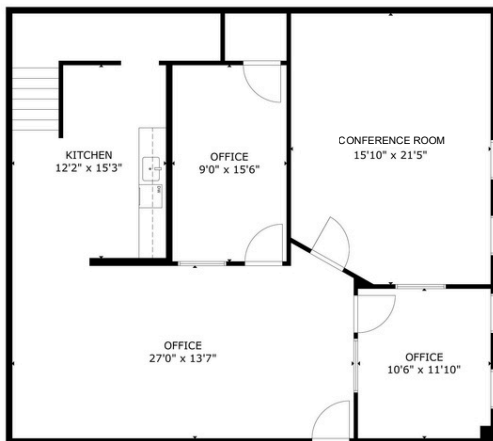


About the Suite J

- Mostly open floorplan
- Four offices
- Large conference room
- Open mezzanine
- Large kitchen/breakroom
- Off-street parking available

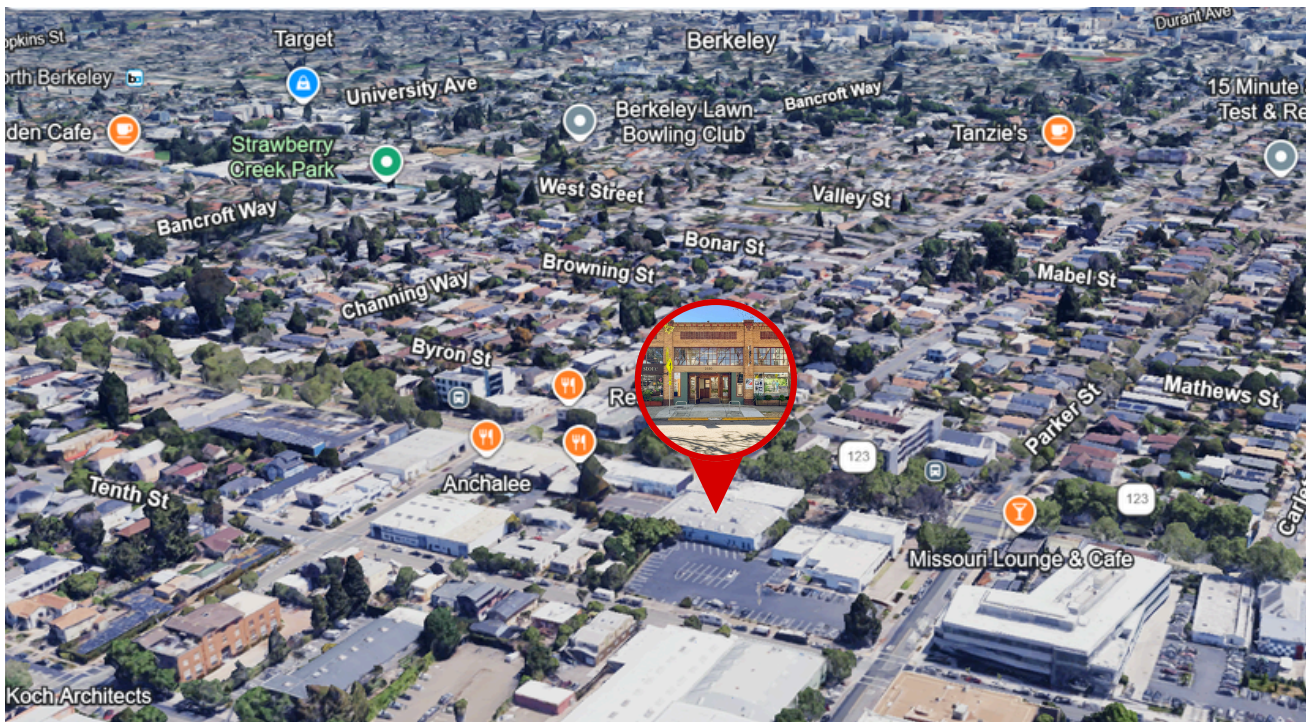


SUITE J : ±2,132 SF – FLOOR PLAN



PROPERTY LOCATION

📍 2530 San Pablo Berkeley CA



SURROUNDING AMENITIES



CONTACT NOW



Colby Katz
(510) 450-1420
ckatz@mrecommercial.com
LIC# 01949015



www.mrecommercial.com