

NICE OFFICE SUITE FOR LEASE



📍 4102 S. Regal Street
Spokane, WA 99223

Offered t
\$1.70
PSF NNN

ccimteam.com

Parcel: 35334.3618

EXCEPTIONAL MULTI-TENANT PROFESSIONAL

office/medical building located in on Spokane's South Hill near Ferris High School. Excellent visibility and located directly across the street from the KREM 2 broadcast building. The building offers plenty of parking and a great tenant mix. Building amenities include a beautiful entrance with sitting area, elevator and covered exterior parking. Beautifully landscaped. Monument and electronic signage available.

Suite 202 spans 2,358 square feet, fully equipped for office functionality. It includes a welcoming reception desk, a comfortable waiting area, 8 private offices, and a functional work area enhanced by ample storage cabinets. The suite also boasts a conference room, storage room and a breakroom for staff convenience. Enjoy an abundance of natural light through floor-to-ceiling windows. Each office is furnished with premium, built-in desks, cabinets, and ergonomic chairs, complemented by elegant woodwork and stone countertops throughout.

📞 **ROB KANNAPIEN**
208.704.3832
robk@ccim.net
ccimteam.com

CORY EHROTT
509.499.9968
coryehrott@cbsr.com

 **COLDWELL BANKER
COMMERCIAL**
SCHNEIDMILLER REALTY
2000 Northwest Blvd
Coeur d'Alene, ID 83814



Data is deemed reliable, no warranties or representations expressed or implied. Broker not responsible for changes, errors, omissions, or prior sale without notice. All critical measurements shall be done by Lessee or Buyer.



ROB KANNAPIEN
CORY EHROTT

208.704.3832 robk@ccim.net ccimteam.com
509.499.9968 coryehrott@cbsr.com

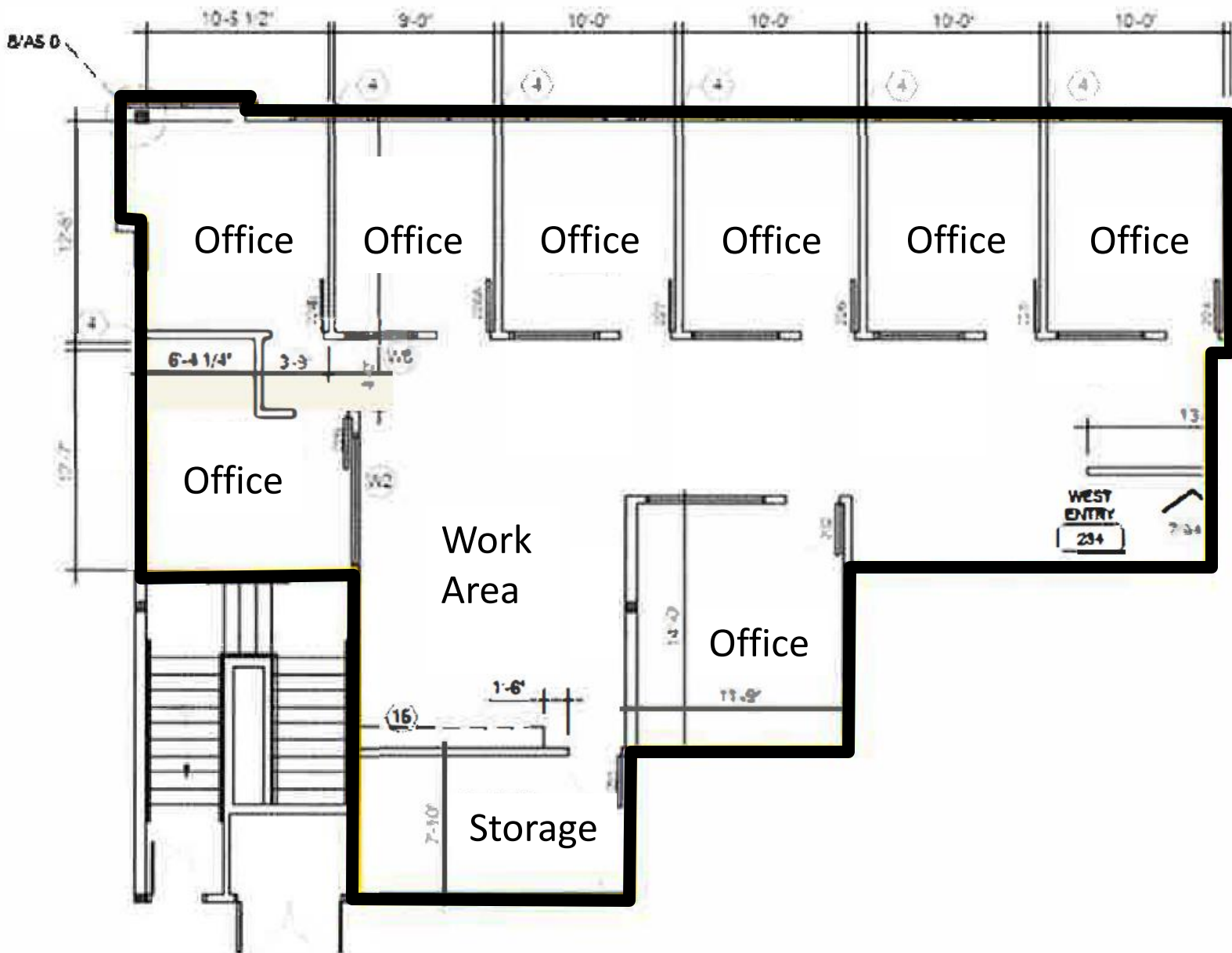


ROB KANNAPIEN
CORY EHROTT

208.704.3832 robk@ccim.net ccimteam.com
509.499.9968 coryehrott@cbsr.com



COLDWELL BANKER
COMMERCIAL
SCHNEIDMILLER REALTY





ROB KANNAPIEN
CORY EHROTT

208.704.3832 robk@ccim.net ccimteam.com
509.499.9968 coryehrott@cbsr.com



COLDWELL BANKER
COMMERCIAL
SCHNEIDMILLER REALTY

