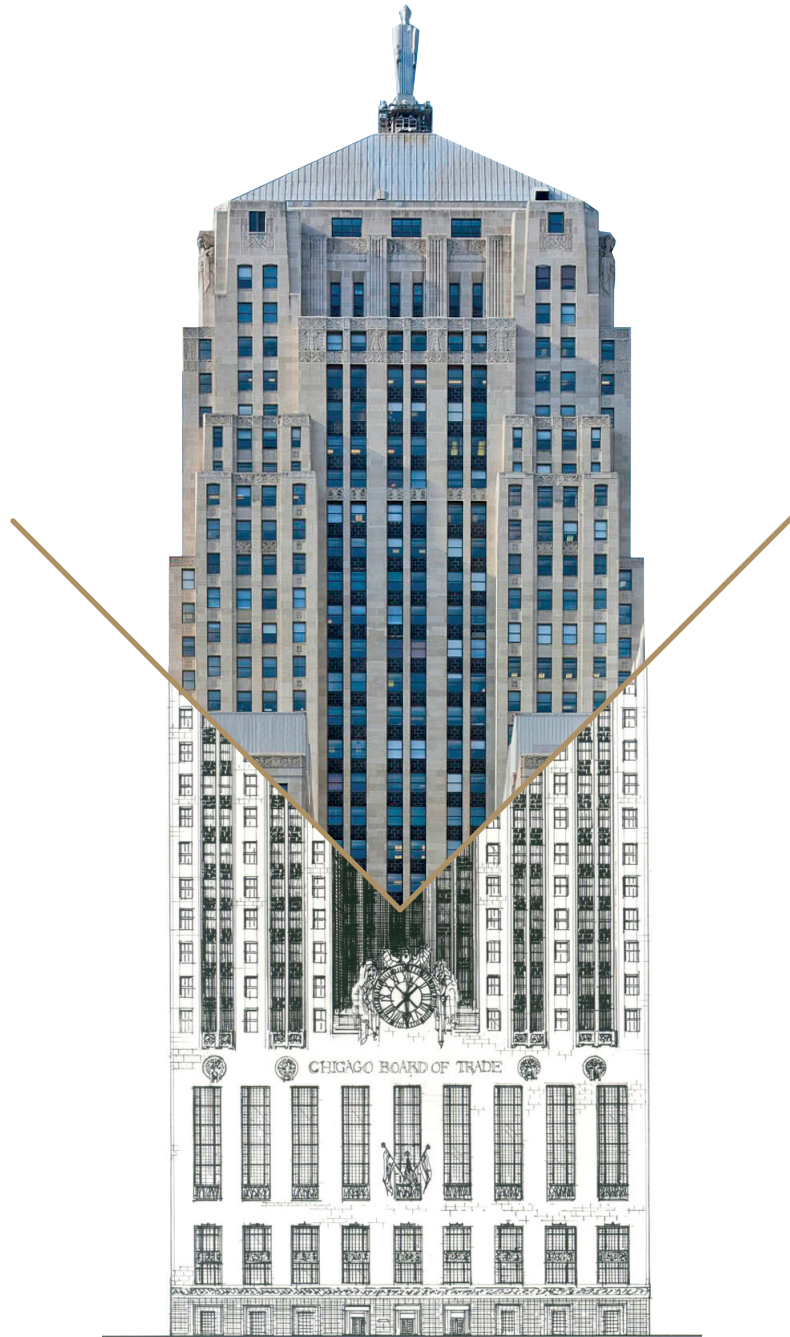


# 141 W JACKSON



— ALWAYS RELEVANT —



STATE-OF-THE-ART FITNESS FACILITY



## AMENITIES THAT DON'T STOP

In the world of 21st Century business, where time is more precious than ever and efficiency is a must, the role of amenities is changing as well. At 141 W Jackson, amenities are 24-7 and 365 days a year. Because business shouldn't have to stop and neither should you. Unless it's part of the plan.





ROOFTOP DECK

#### STATE-OF-THE-ART FITNESS FACILITY

- Open 24.7.365
- Personal Trainers Available
- Massage Room
- Towel Service
- Locker Room Facilities

#### BRAND NEW UPPER TENANT LOBBY

- 10,000 SF Space
- Professional Concierge Service

#### AMENITIES ROOM

- Provides Convenience to Your Busy Schedule

#### SERVICES

- **Pressbox** – Laundry/Dry Cleaning Service
- **Fast Fleet Techs Device Repair** – Onsite Scheduled Device Repair
- **Shoe Drop** – Shoe/Hand-bag Cleaning and Repair
- Accessible to The Public on A-Level

#### ROOFTOP DECK & GAME ROOM

- 4,000+ SF Indoor and Outdoor Space
- Sweeping Views of Lake Michigan and The City Skyline
- Foosball, Pool and Poker Tables
- Hours of Operation; Weekdays 7am–11pm Weekends Noon–6pm Outdoor Weather Permitting
- Great For Entertainment

#### VIDEO CONFERENCE CENTER

- Open 24.7.365
- 3 Global Connectivity Rooms
- Boardroom / Classroom Configurations
- Wireless Access Points
- Amenity Pricing
- 60" LED Screens



# OFFICES OF CHANGE

While the world outside gazes in wonder at one of America's highest-profile builds constructed in the last 100 years, inside you'll find the offices set up for the people and companies ready to do business for the next 100 years.



From its fiber-optic backbone and state-of-the-art telecommunications to its unrivaled electrical infrastructure, 141 W Jackson is future perfect.



TOP IMAGE SUITE 1510A, BOTTOM IMAGE SUITE 1600A





CHICAGO THEATRE

# A NEW WAY TO WORK, LIVE AND PLAY

To work effectively, produce more and live better means to multi-task on a full-time basis. That's the way business is done and life is lived in the 21st Century. Fortunately, 141 W Jackson offers the technology, the amenities and the environment to get it all done effortlessly. In this true, multi-tenant building, with its wide mix of space and offerings within a neighborhood boasting an array of restaurants, entertainment and shopping, multi-tasking rarely feels like work at all.



ITALIAN VILLAGE RESTAURANT



DIVVY BIKES

## RAISE YOUR PROFILE AND EXPAND YOUR HORIZONS

With a building population of more than 5,000 and an active pedestrian corridor connecting Van Buren Street to Jackson Boulevard, the historic 141 W Jackson puts companies and their brands at a bustling urban intersection that's rich with opportunity and primed for change. Progress begins with movement.

CLOUD GATE BY ANISH KAPOOR





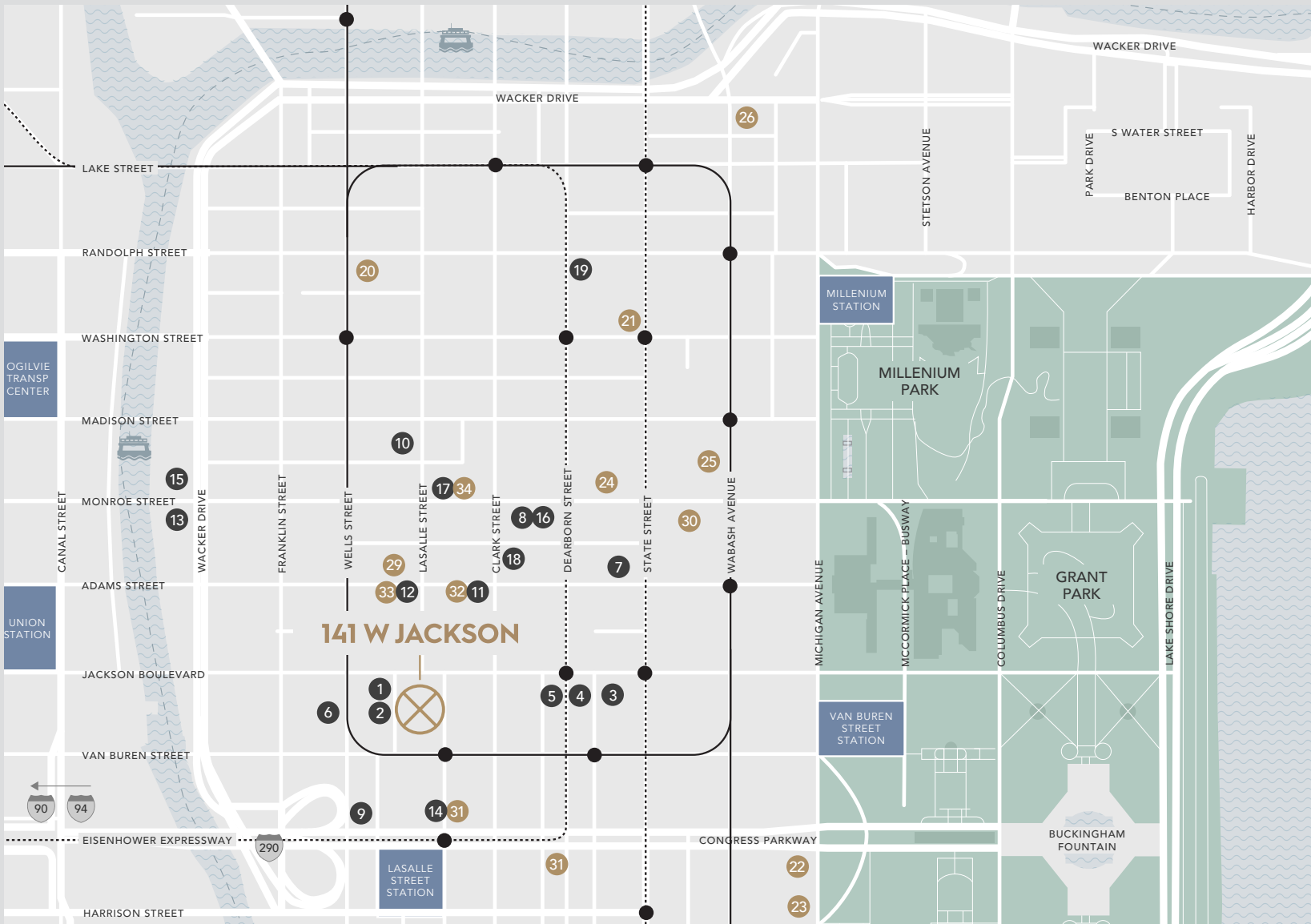
FLAMINGO BY ALEXANDER CALDER

RESTAURANTS

1. Ceres Café
2. Cellers Market
3. Plymouth Restaurant & Bar
4. Standard Club
5. Cavanaugh's Bar & Restaurant
6. Poag Mahone's
7. The Berghoff
8. Italian Village
9. Tutto Italiano
10. Briggs Restaurant & Cocktail
11. Elephant & Castle
12. The Florentine
13. South Branch
14. Everest Restaurant
15. Rivers
16. Vivere
17. Steadfast Restaurant at the Grey
18. Revival Food Hall
19. The Dearborn

HOTELS

20. Hotel Allegro
21. Burnham Hotel
22. The Congress Plaza Hotel
23. Renaissance Blackstone Chicago Hotel
24. The Hampton Inn Majestic Chicago
25. The Silversmith Hotel & Suites
26. Hotel Monaco – Chicago
27. Hilton Chicago
28. Wyndham Blake Chicago
29. W Chicago City Center
30. Palmer House Hilton
31. Buckingham Athletic Club Hotel
32. Club Quarters
33. JW Marriott Chicago
34. The Kimpton Gray Hotel





# CONFERENCE CENTER

141 W Jackson has a state-of-the-art video conferencing center which is located on the west side of the 2nd floor south lobby. Our concierge professional is on-site to assist tenants, coordinate the use of conference rooms, as well as arrange food service. The facility is available to all tenants 24/7/365.



## AMENITIES

- Wireless access point
- Podium
- (5) 60" LED
- LifeSize Team 220 video conference system
- (2) Laptop wall connectors
- IPad for touchscreen
- Audio via flush-mount ceiling speakers
- Creston wall keypad controls
- Idea boards and markers
- Pantry area with sink

## CAPACITY

- Seats 54

## CONFIGURATION OPTIONS

- Classroom: 30 seats with desks
- Conference: 36 seats around large rectangular table configuration
- Auditorium: 54 seats

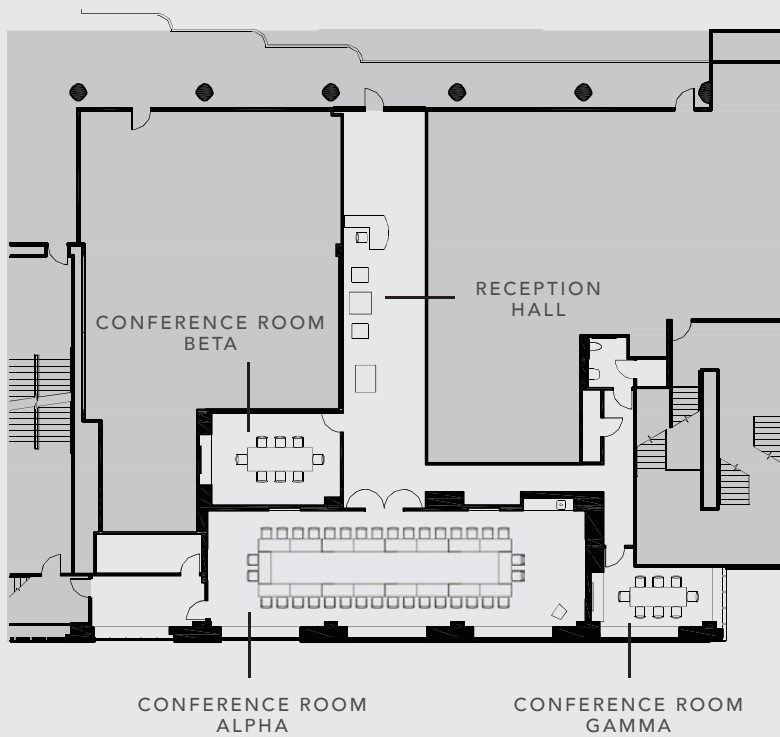
## FURNITURE

- (26) Hurry Up! nesting tables
  - casters and flip tops for easy configuration
- (54) Torsion on the Go! chairs

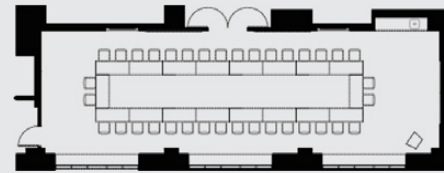
## RATES

- Monday–Friday from 6am–6pm:
  - Half day - \$50; full day - \$100
  - \$12.50 per hour with 4-hour minimum
- Monday–Friday from 6pm–6am and all day Saturday and Sunday
  - Half day - \$100; full day - \$200
  - \$25 per hour with 4-hour minimum

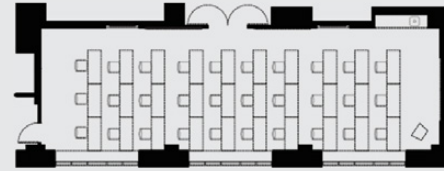
**CONFERENCE ROOM**



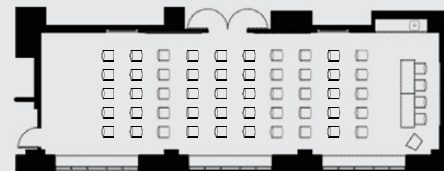
**CONFERENCE ROOM ALPHA  
LAYOUT OPTIONS**



CONFERENCE: 36 SEATS



CONFERENCE: 30 SEATS



AUDITORIUM: 53 SEATS

**SMALL CONFERENCE ROOM BETA**

**AMENITIES**

- Wireless access point
- 60" LED
- LifeSize Team 220 video conference system
- Creston wall keypad controls
- Local jack pack for content sharing

**CAPACITY**

- Seats 8

**CONFIGURATION OPTION**

- Boardroom: 8 chairs around large rectangular

**FURNITURE**

- (1) DataLink Table: 36" x 48" x 144"
- (8) Altus ergonomic adjustable mesh-back chairs

**RATES**

- Monday–Friday from 6am–6pm:
  - \$12.50 per hour with 1-hour minimum
- Monday–Friday from 6pm–6am and all day Saturday and Sunday
  - \$25 per hour with 1-hour minimum

**SMALL CONFERENCE ROOM GAMMA**

**AMENITIES**

- Wireless access point
- 60" LED
- Creston wall keypad controls
- Local jack pack for content sharing

**CAPACITY**

- Seats 8

**CONFIGURATION OPTION**

- Boardroom: 8 chairs around large rectangular

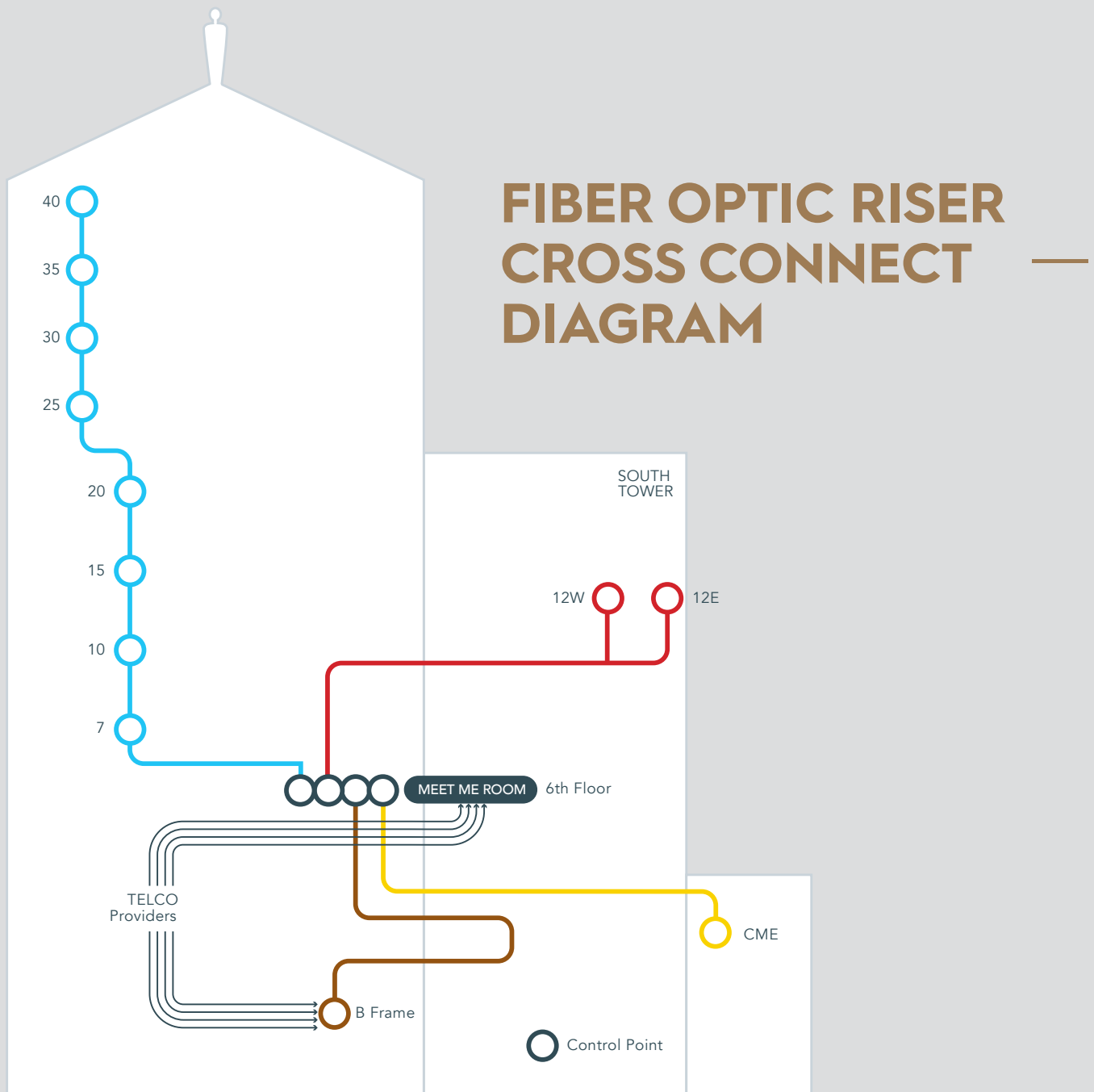
**FURNITURE**

- (1) DataLink Table: 36" x 48" x 144"
- (8) Altus ergonomic adjustable mesh-back chairs

**RATES**

- Monday–Friday from 6am–6pm:
  - \$12.50 per hour with 1-hour minimum
- Monday–Friday from 6pm–6am and all day Saturday and Sunday
  - \$25 per hour with 1-hour minimum





ROUTE	START POINT	END POINT(S)	FIBER	DUCT
<b>BLUE</b>	Meet Me Room	North Tower Control Points	YES	YES
<b>RED</b>	Meet Me Room	South Tower Control Points	YES	YES
<b>YELLOW</b>	Meet Me Room	CME Annex Control Point	YES	YES
<b>BROWN</b>	Meet Me Room	B Level NETpop	YES	YES