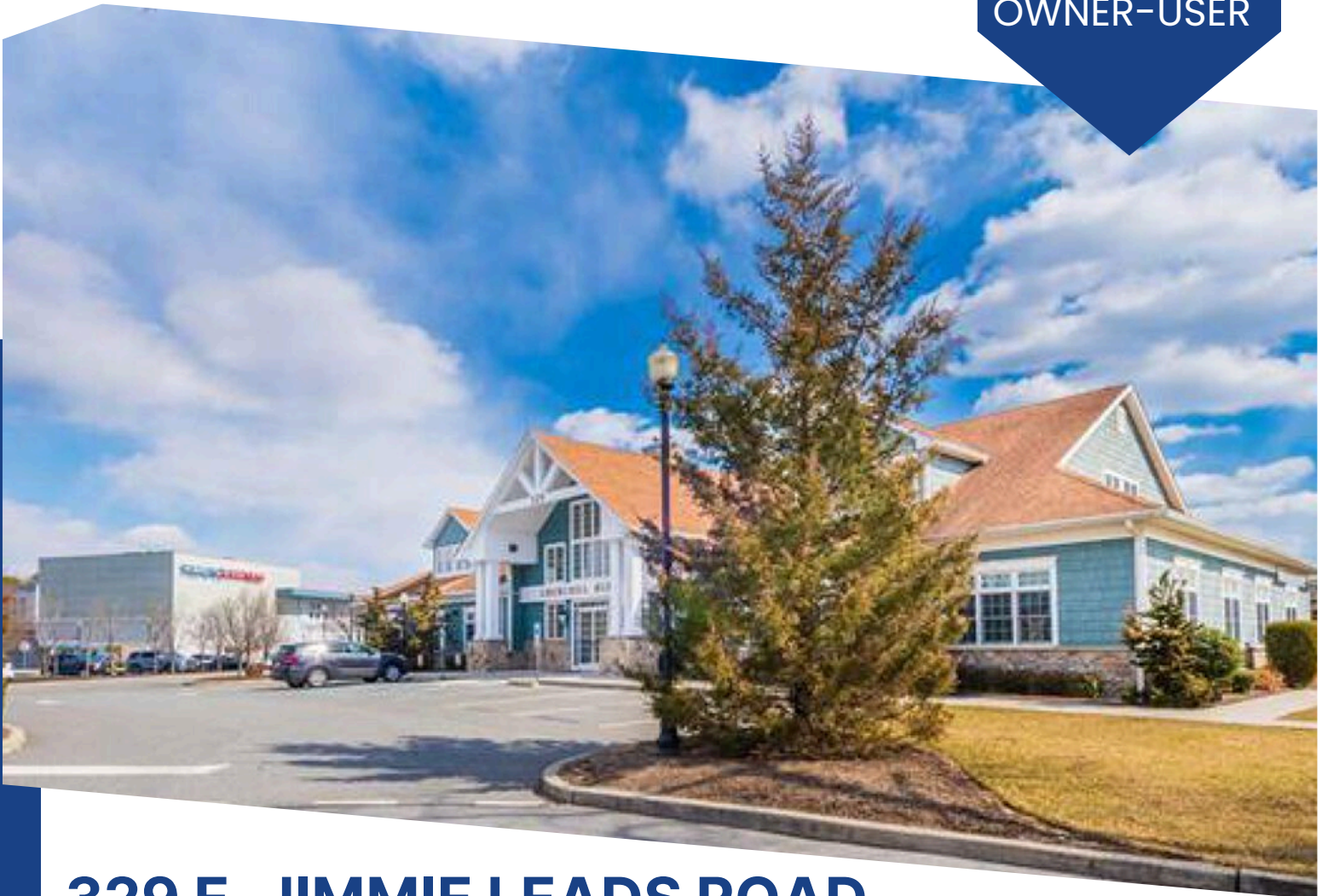


CLASS 'A' PROFESSIONAL OFFICE BUILDING AVAILABLE

VALUE-ADD OPPORTUNITY FOR INVESTOR OR OWNER-USER



**329 E. JIMMIE LEADS ROAD
GALLOWAY, NJ**

John Mazurie
Senior Advisor
609.412.8690
john.mazurie@wolfcre.com



The foregoing information was furnished to us by sources which we deem to be reliable, but no warranty or representation is made as to the accuracy thereof. Subject to correction of errors, omissions, change of price, prior sale or withdrawal from market without notice.



Wolf Commercial Real Estate
www.WolfCRE.com



PROPERTY DESCRIPTION

Location: 329 E. Jimmie Leads Road
Galloway, NJ 08205

Size/SF: +/-10,000 SF

Sale Price: \$1,500,000.00

PROPERTY AREA/HIGHLIGHTS

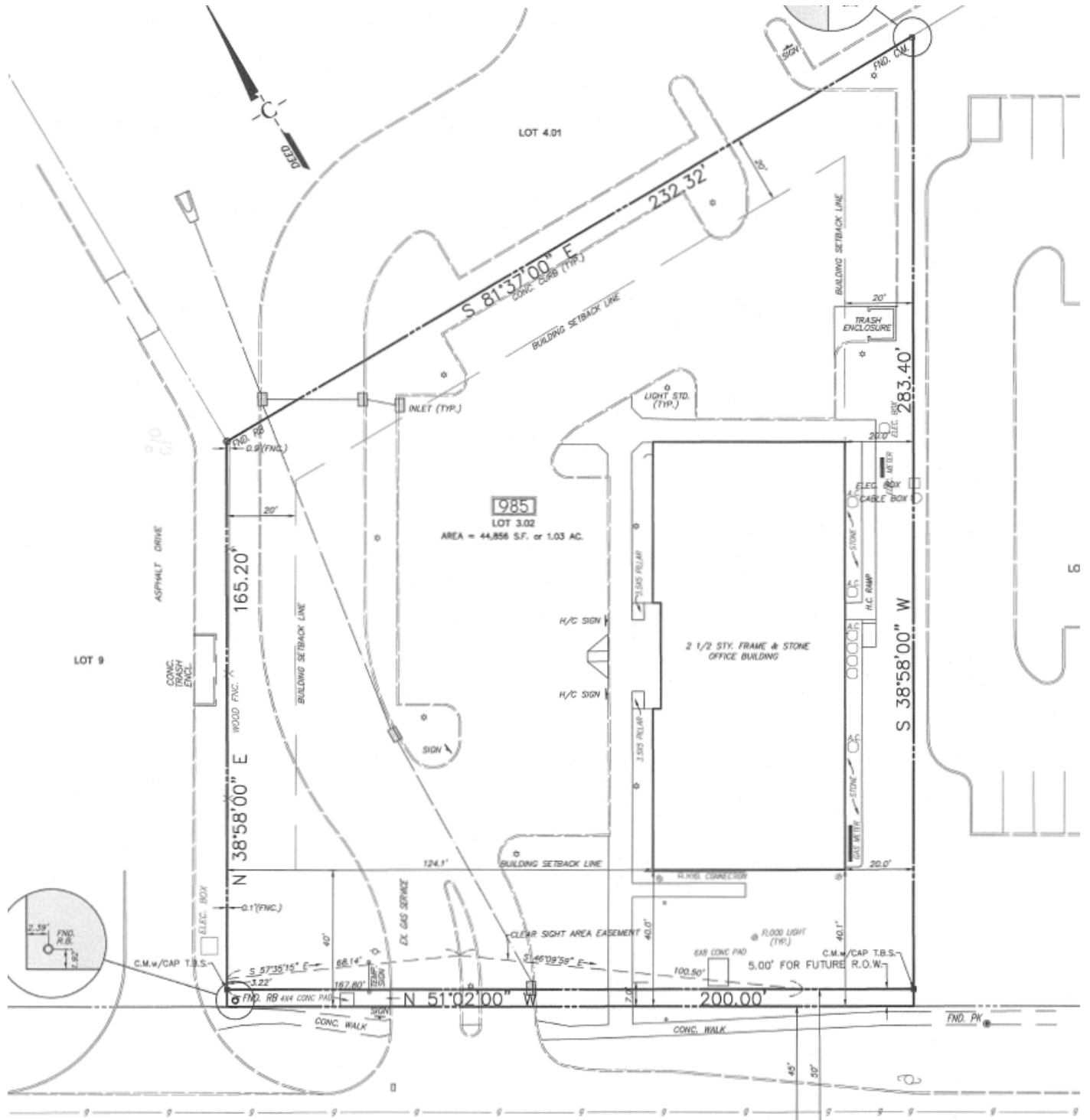
- Value add for investor or owner/user
- Class 'A' professional office building meticulously maintained
- % occupied
- Located in the center of Galloway Township and central business district
- Situated near Atlanticare Mainland Regional Hospital and Stockton University.

AERIAL MAP



The foregoing information was furnished to us by sources which we deem to be reliable, but no warranty or representation is made as to the accuracy thereof. Subject to correction of errors, omissions, change of price, prior sale or withdrawal from market without notice.

SITE PLAN



The foregoing information was furnished to us by sources which we deem to be reliable, but no warranty or representation is made as to the accuracy thereof. Subject to correction of errors, omissions, change of price, prior sale or withdrawal from market without notice.

ADDITIONAL PHOTOS



The foregoing information was furnished to us by sources which we deem to be reliable, but no warranty or representation is made as to the accuracy thereof. Subject to correction of errors, omissions, change of price, prior sale or withdrawal from market without notice.