

# THE OLD THEATRE MALL



For Lease | Retail / Office Space

## Highlights



2222 Second Street  
Livermore, CA



In the Heart of  
Downtown Livermore



Specializing in  
Small Spaces



Across from  
Livermore Post Office



Historical Setting in a  
Renovated Building



Dedicated Parking

**Colliers**

**Mark Triska**

Executive Vice President  
CA License No. 01012779  
mark.triska@colliers.com  
+1 925 227 6210

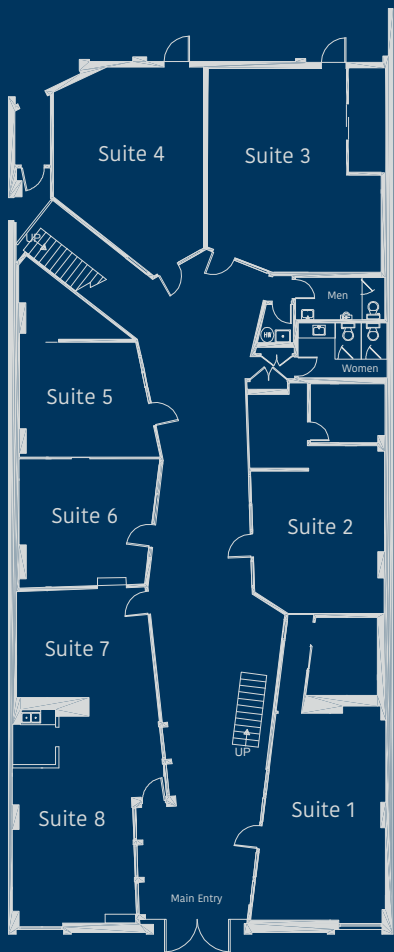
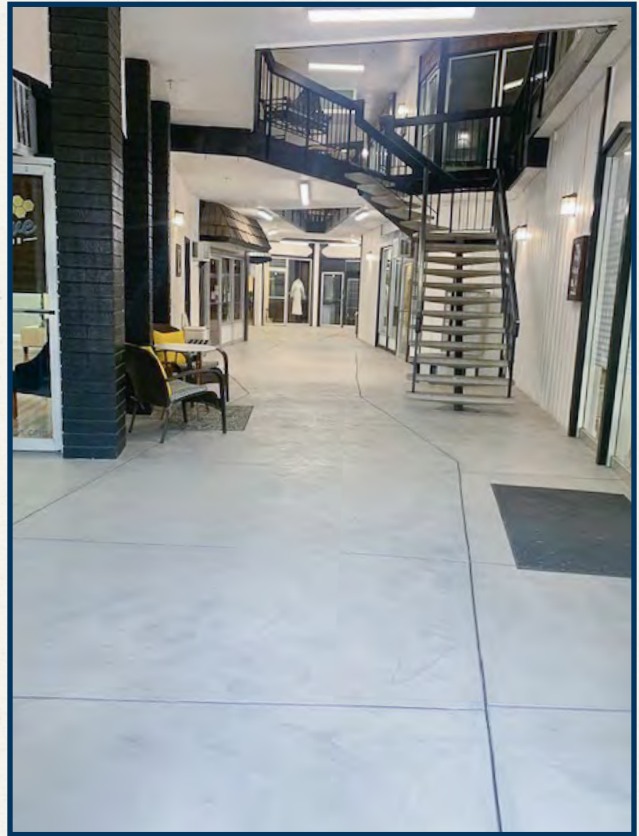
**Colliers**

4301 Hacienda Drive, Suite 430  
Pleasanton, CA 94588  
+1 925 463 2300  
colliers.com

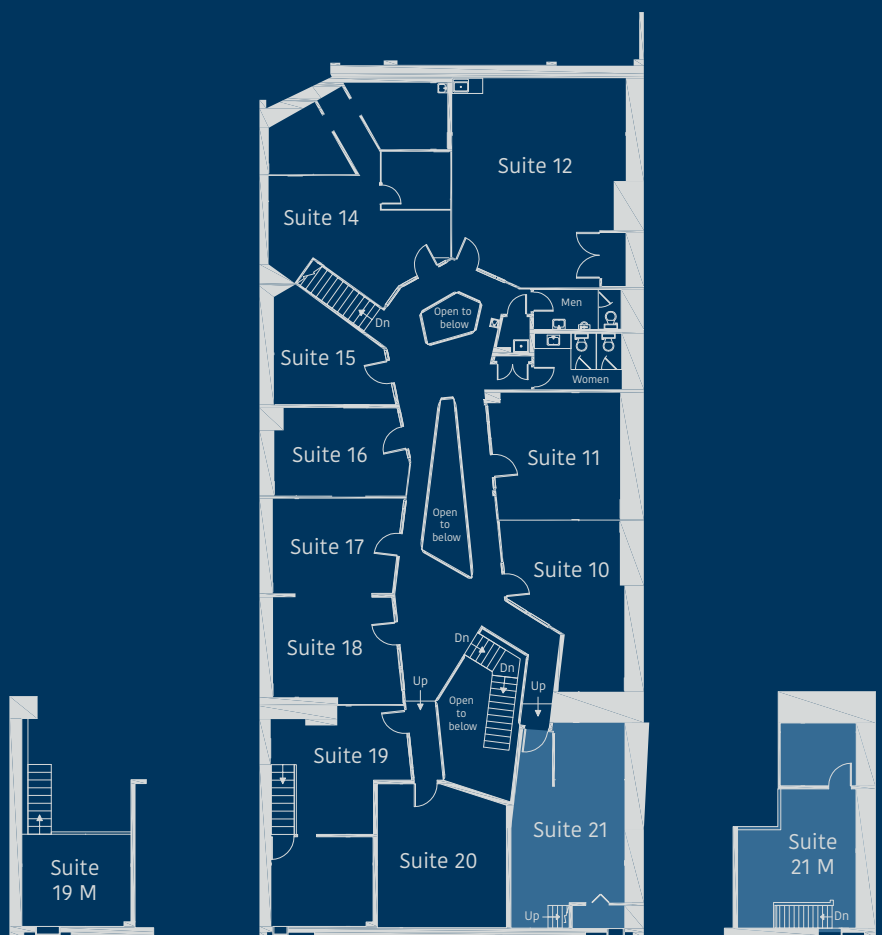
# THE OLD THEATRE MALL

## Available Suites

Suite	Size	Available	Monthly Gross Rent
21	±886 SF	Now	\$2,100.00

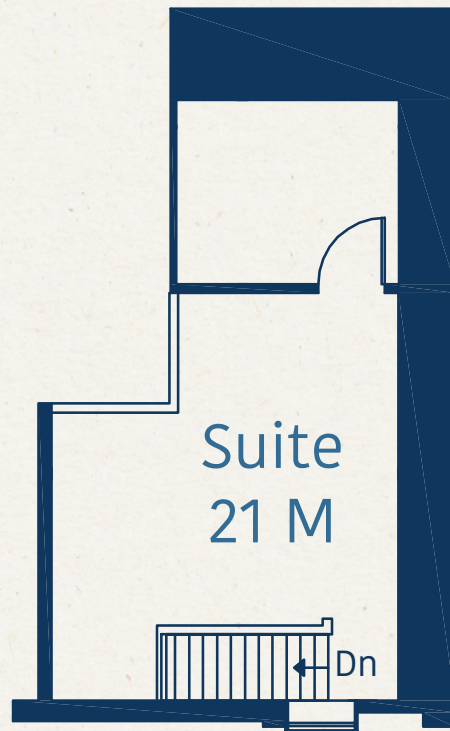
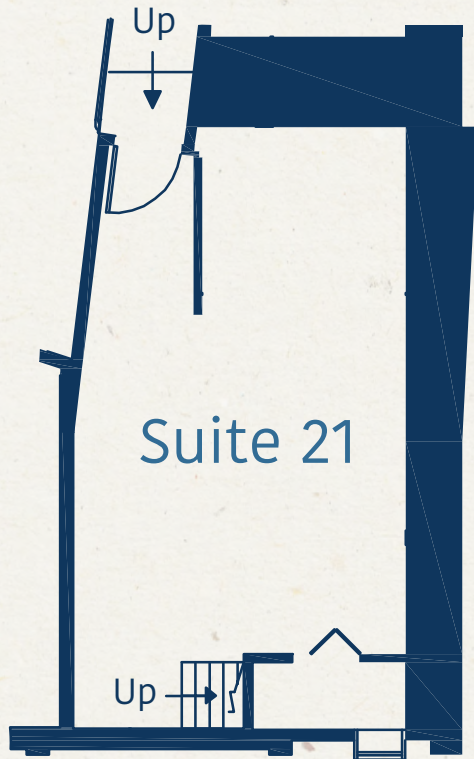


Second Street



Second Street

# Suite 21 | ±886 SF



\*Floor Plan Not to Scale



**Mark Triska**  
Executive Vice President  
CA License No. 01012779  
mark.triska@colliers.com  
+1 925 227 6210

**Colliers**  
4301 Hacienda Drive, Suite 430  
Pleasanton, CA 94588  
+1 925 463 2300  
colliers.com

# THE OLD THEATRE MALL

## Location Overview



**Mark Triska**  
 Executive Vice President  
 CA License No. 01012779  
 mark.triska@colliers.com  
 +1 925 227 6210

**Colliers**  
 4301 Hacienda Drive, Suite 430  
 Pleasanton, CA 94588  
 +1 925 463 2300  
 colliers.com