

# Courtney Business Center



## PROPERTY HIGHLIGHTS

- Outstanding Corner Location at Paseo de las Americas & Siempre Viva Rd
- High Visibility Multi-Tenant Building (Offices & Warehouses)
- Warehouse Space from 1,400 SF
- Single Office Space from 246 - 265 SF
- 14' x 14' Truck Doors
- Walking distance to the International Border
- Reserved Parking for each suite
- Close to Retail Center & Restaurants
- Excellent Street Frontage & near the I-905 entrance/exit



IRE DEVELOPMENT

### CONTACT:

Zachary Vogt  
(619) 904-0424  
zach@iredevelopment.com  
Lic. 02167776

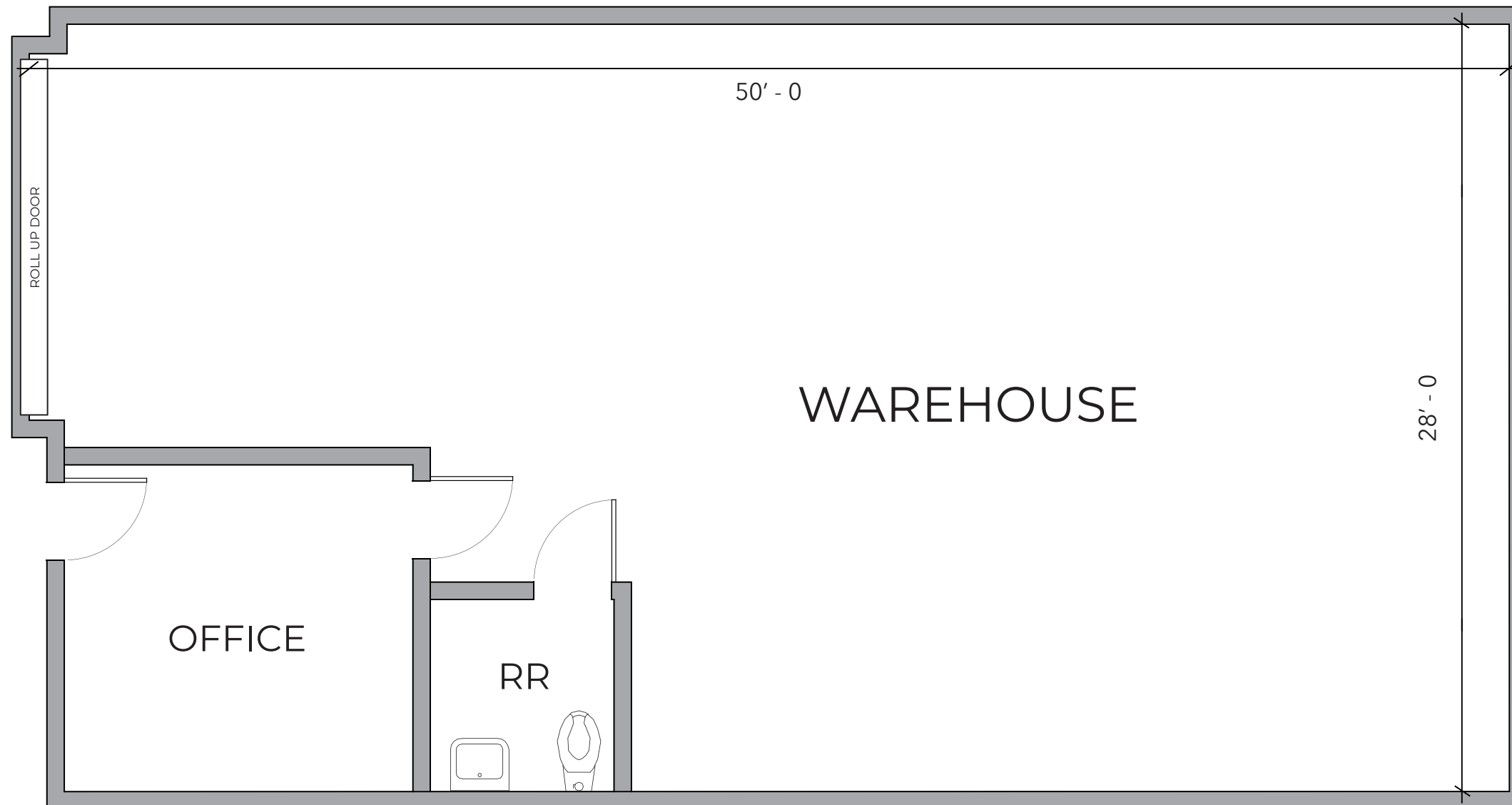
# Warehouse Space | For Lease

## Courtney Business Center

9731 Siempre Viva Rd, San Diego  
CA 92154

### AVAILABILITY:

<u>SUITE #</u>	<u>TOTAL SF</u>	<u>GROSS MONTHLY RENT/PSF</u>	<u>DESCRIPTION</u>
A	1,400	\$2.10 + Electricity	Office, Warehouse, Roll Up Door



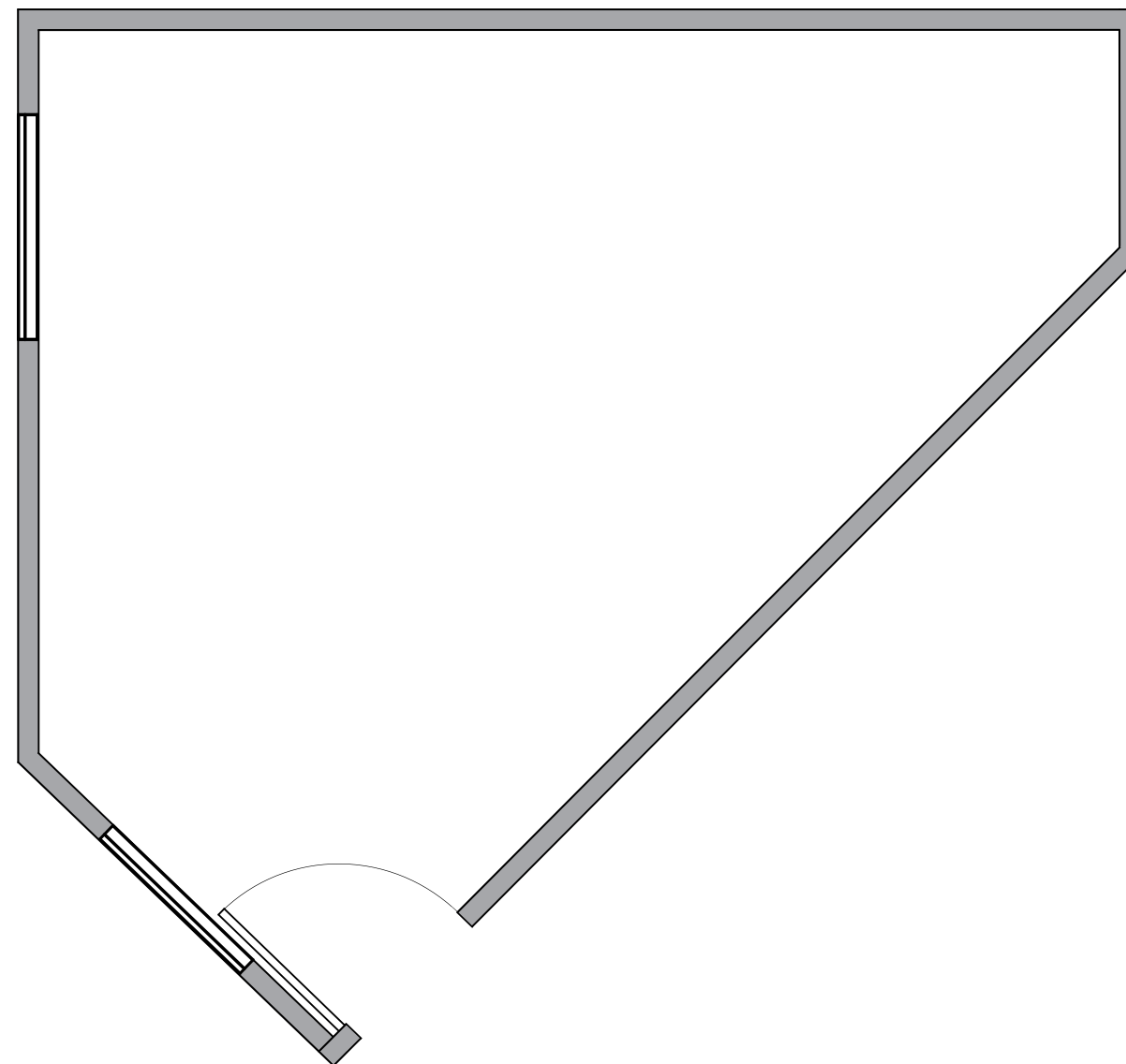
# Office Space | For Lease

## Courtney Business Center

9731 Siempre Viva Rd, San Diego  
CA 92154

### AVAILABILITY:

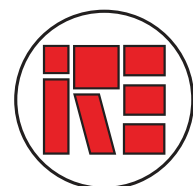
<u>SUITE #</u>	<u>TOTAL SF</u>	<u>GROSS MONTHLY RENT/PSF</u>	<u>DESCRIPTION</u>
103	265	\$2.50 + Electricity	Single Office



# Warehouse Space | For Lease

## Courtney Business Center

9731 Siempre Viva Rd, San Diego  
CA 92154



IRE DEVELOPMENT

### CONTACT:

Zachary Vogt  
(619) 904-0424  
zach@iredevelopment.com  
Lic. 02167776

All information furnished regarding property for sale, lease or financing is from sources we deem in our sole opinion to be reliable. No representation is made as to the accuracy thereof and is submitted subject to omissions, errors, change of leasing price, or other conditions prior to sale, lease or financing, or withdraw without notice.