

FIND



F
O
R

L
E
A
S
E



371 CANAL STREET

371

CANAL STREET
TRIBECA, NYC

FIRST FLOOR LOFT SPACE FOR LEASE
\$7,995 ASKING RENT

PROPERTY FEATURES

SIZE: 1700 SF

CEILING HEIGHT: 15 FT

DELIVERY: Immediate

PROPERTY DESCRIPTION

Beautifully exposed brick loft space available for lease on the ground floor. Exposed pipes and high ceilings give it a rustic yet artistic vibe. Full HVAC system in place with mounted TVs, furniture and surround sound all installed. Customized bar in the back, with two bathrooms in place. Ideal for an event space, office space, fitness studio or any type of use. Already synced to Wifi, with two mounted televisions and surround sound system. Door has an intercom in place along with a fully vented rest area close to the front. Can come fully furnished, or white box delivery. Extremely well lit options or dimmer lighting.

Prime location that intersects Hudson Square, Tribeca, and Canal Street. Pedestrian foot traffic is immense due to proximity to nearby attractions, modes of transportation, and new developments/hotels. Close to every train possible and only 5 minutes away from the Holland tunnel.

TRANSPORTATION



For more information please contact:
Richard Wong
RichardWong@findrealestate.com
(212) 300-6412 ext. 222

FIND



All information is from sources deemed reliable. No representation is made as to the accuracy thereof and such information is subject to errors, omission, changes or withdrawal without notice. All square footage and dimensions are approximate

371

CANAL STREET
TRIBECA, NYC



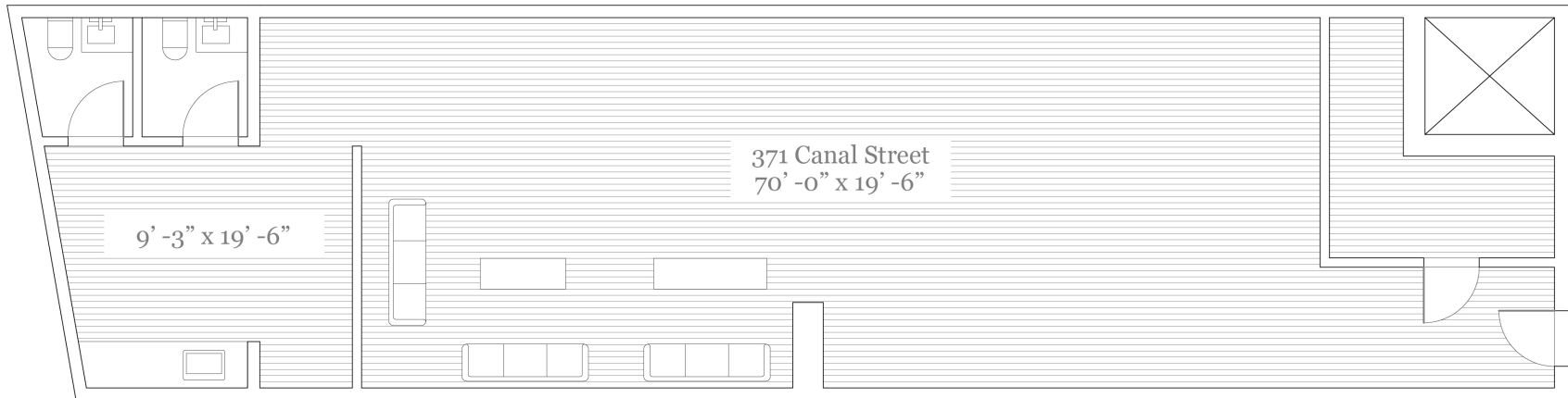
For more information please contact:
Richard Wong
RichardWong@findrealestate.com
(212) 300-6412 ext. 222



All information is from sources deemed reliable. No representation is made as to the accuracy thereof and such information is subject to errors, omission, changes or withdrawal without notice. All square footage and dimensions are approximate

371

CANAL STREET
TRIBECA, NYC



For more information please contact:
Richard Wong
RichardWong@findrealestate.com
(212) 300-6412 ext. 222

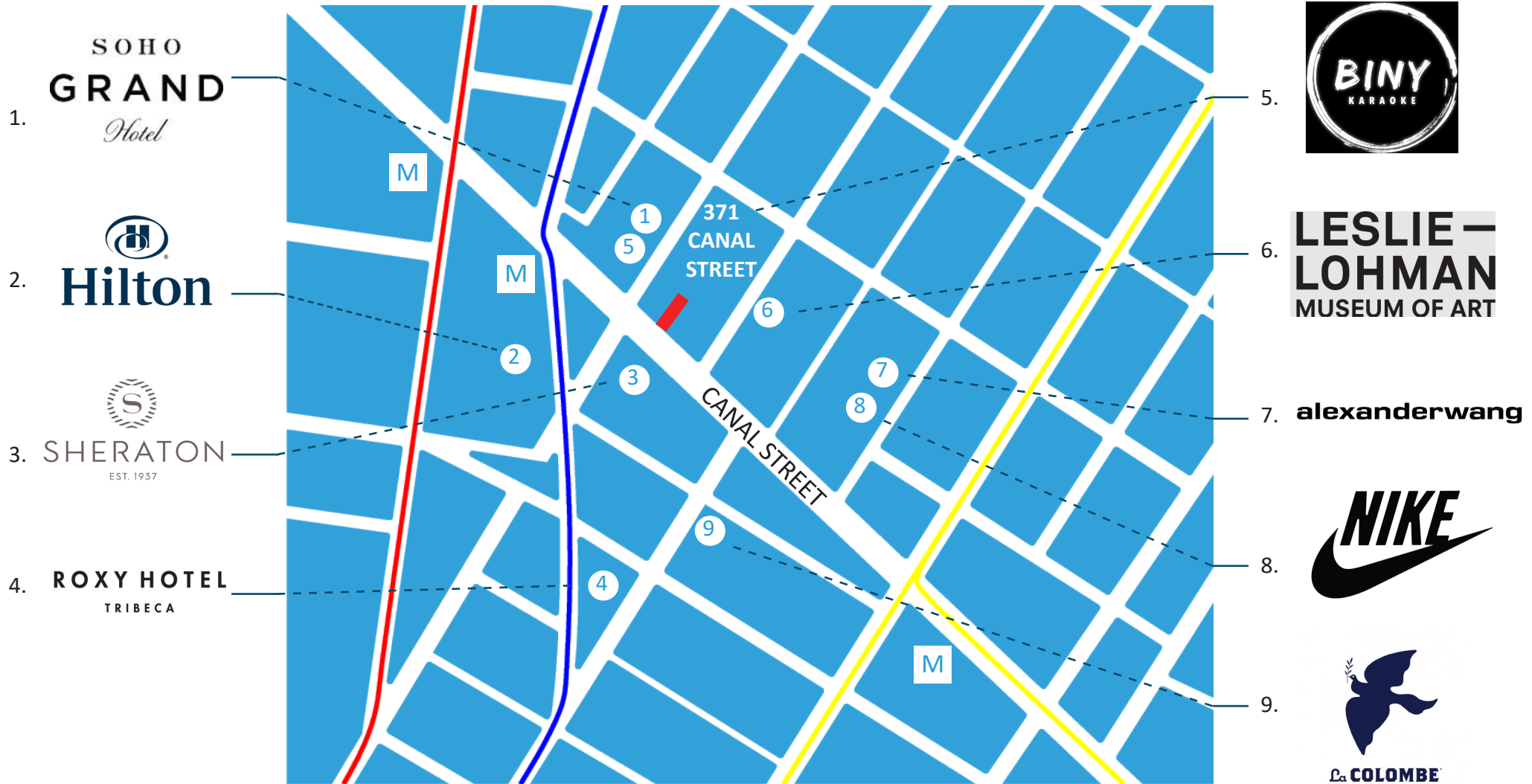


All information is from sources deemed reliable. No representation is made as to the accuracy thereof and such information is subject to errors, omission, changes or withdrawal without notice. All square footage and dimensions are approximate

371

CANAL STREET
TRIBECA, NYC

TRANSPORTATION



For more information please contact:
Richard Wong
RichardWong@findrealestate.com
(212) 300-6412 ext. 222



All information is from sources deemed reliable. No representation is made as to the accuracy thereof and such information is subject to errors, omission, changes or withdrawal without notice. All square footage and dimensions are approximate