

Cityline
Innovate

±155,469 SF
300 Mathilda



Where creativity comes to thrive.

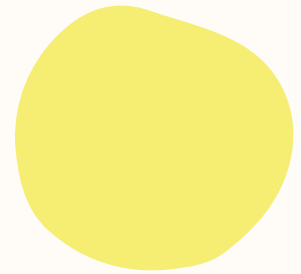
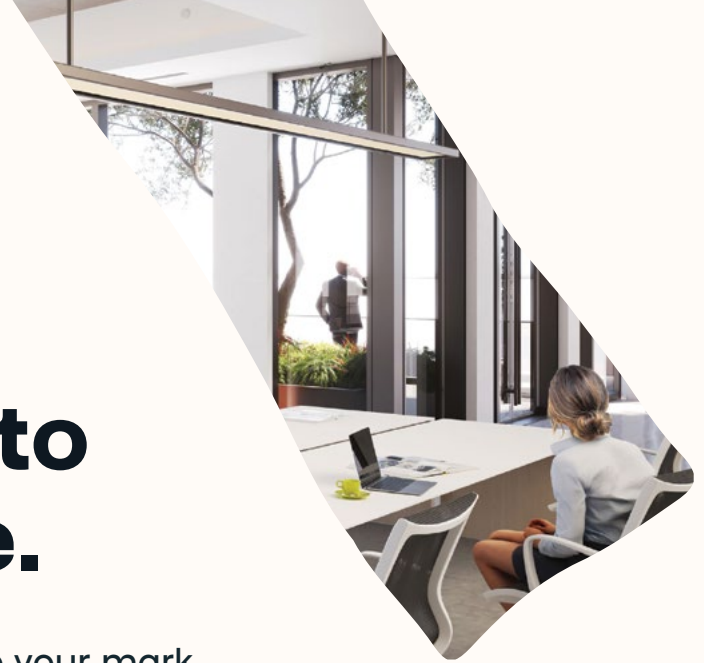
5 story building in the heart of Downtown Sunnyvale.

CBRE



A place to innovate.

Get inspired and leave your mark in up to 1 M SF over four buildings at Cityline, home to game-changing tech companies.



Meet me at Cityline.

Up to 1M SF Class A Office Available

- OFFICE
- RETAIL
- CALTRAIN
- RESIDENTIAL
- PARKING
- FUTURE DEVELOPMENT



Designed for ESG.



200 & 300 Washington and 300 Mathilda are LEED Gold
250 Mathilda is LEED Silver



Site-wide EV charging opportunities



MERV 15 Filters at 200 & 300 Washington and 300 Mathilda



Site-wide Fitwel certification



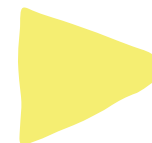
Access to the outdoors (including 1-acre Redwood Square)







300 Mathilda



±155,469 SF / 6 stories

Expansion Opportunity

- Floor 3: 40,141 SF
- Floor 4: 40,480 SF
- Floor 5: 40,480 SF
- Floor 6: 40,480 SF
- Private balconies
- High-end in-building retail & dining
- 154 below grade stalls with additional stalls in adjacent building
- LEED Gold | MERV 15 Filters | Wired Score Gold | Fitwel Certification
- 9,306 SF outdoor terraces

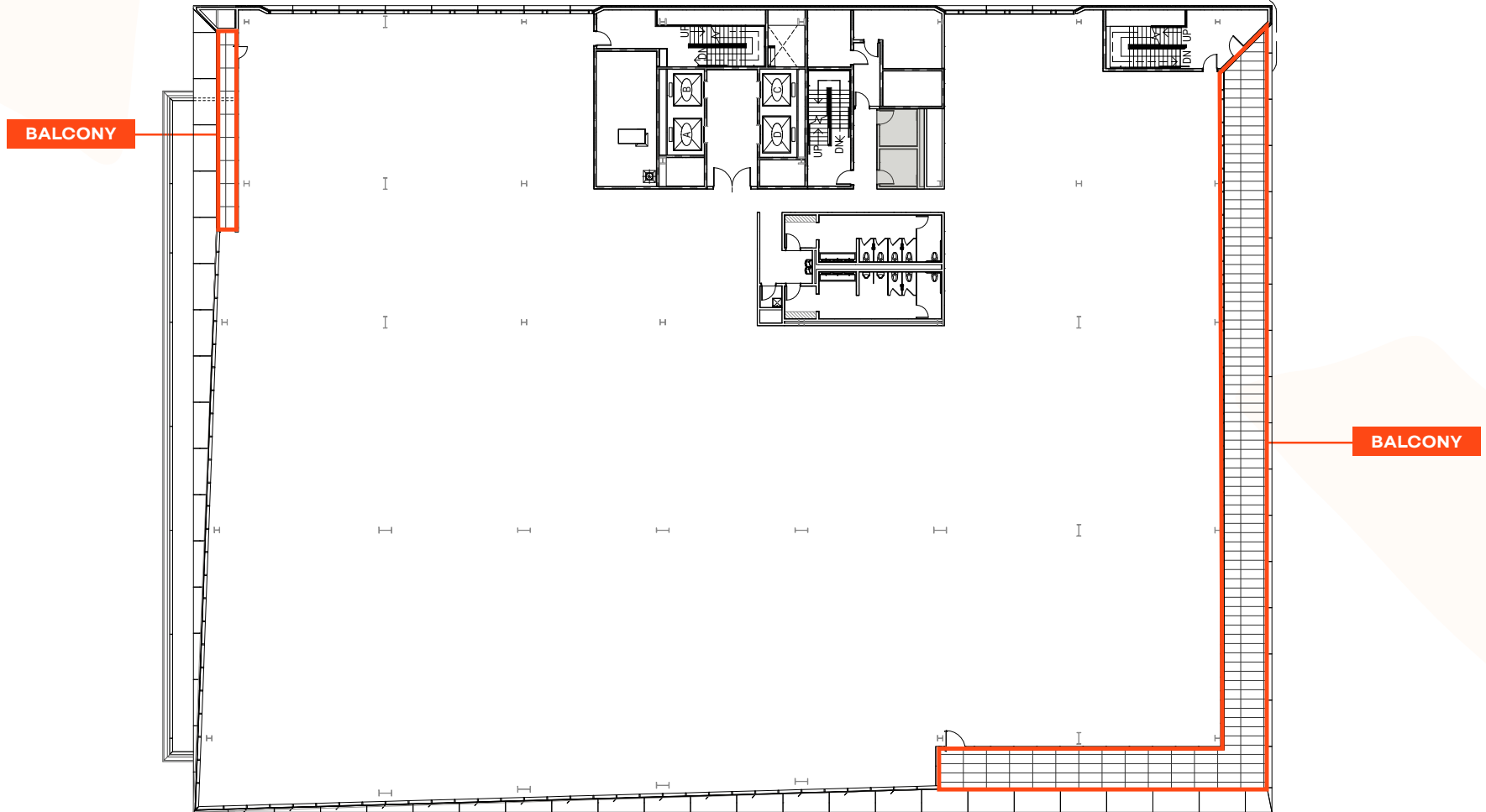
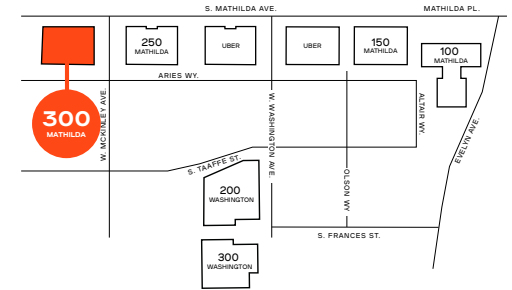


±37,930 SF

300 Mathilda | Third Floor

→ 2,211 SF terrace

→ Total – 40,141 SF

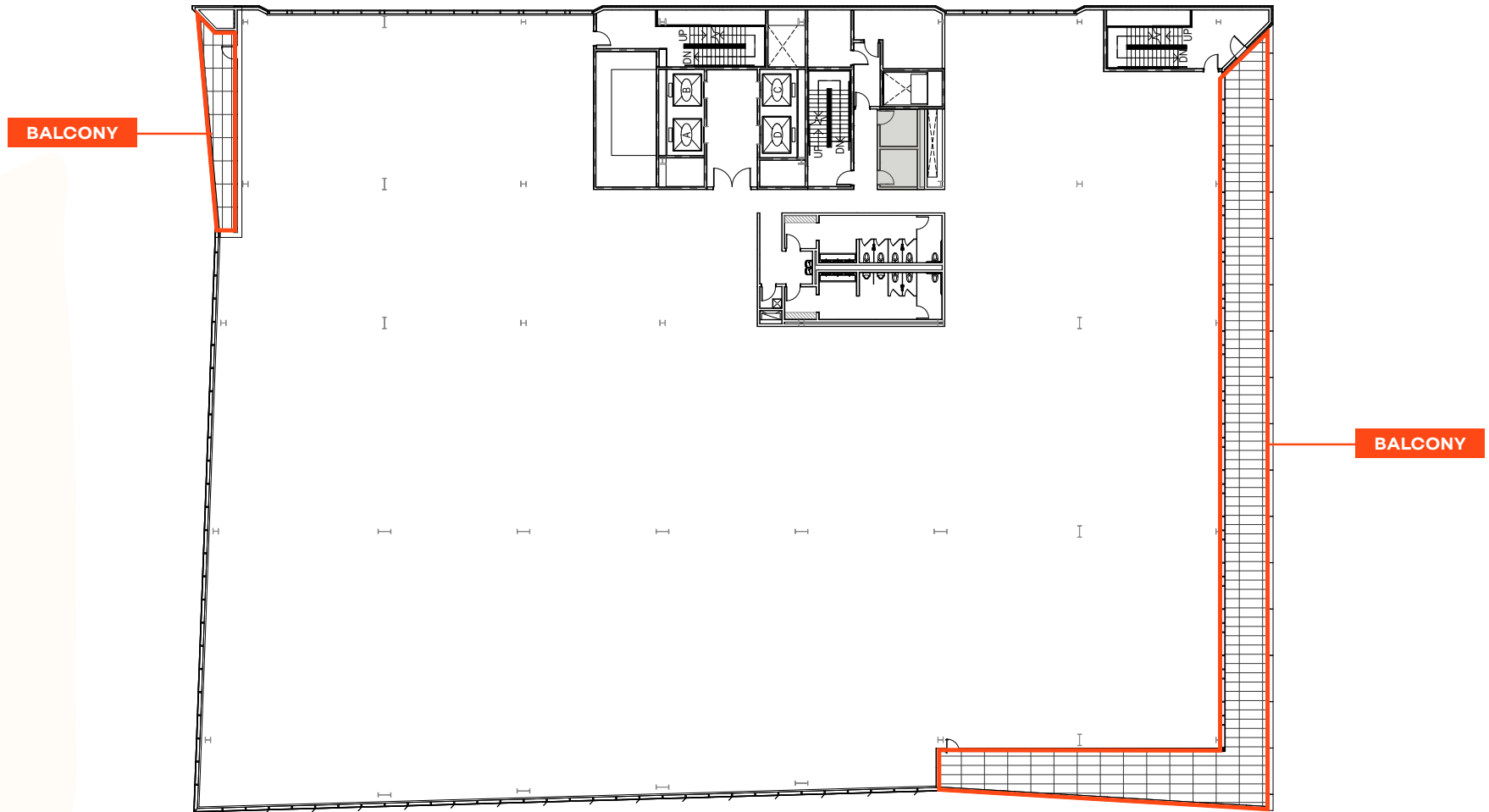
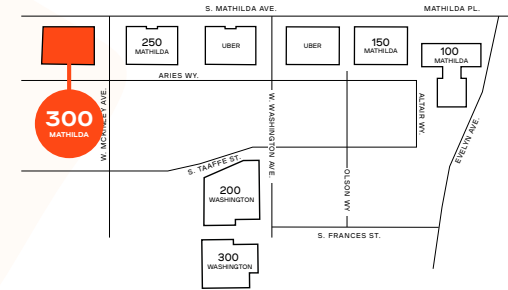


±38,115 SF

300 Mathilda | Fourth Floor

→ 2,365 SF terrace

→ Total 40,480 SF

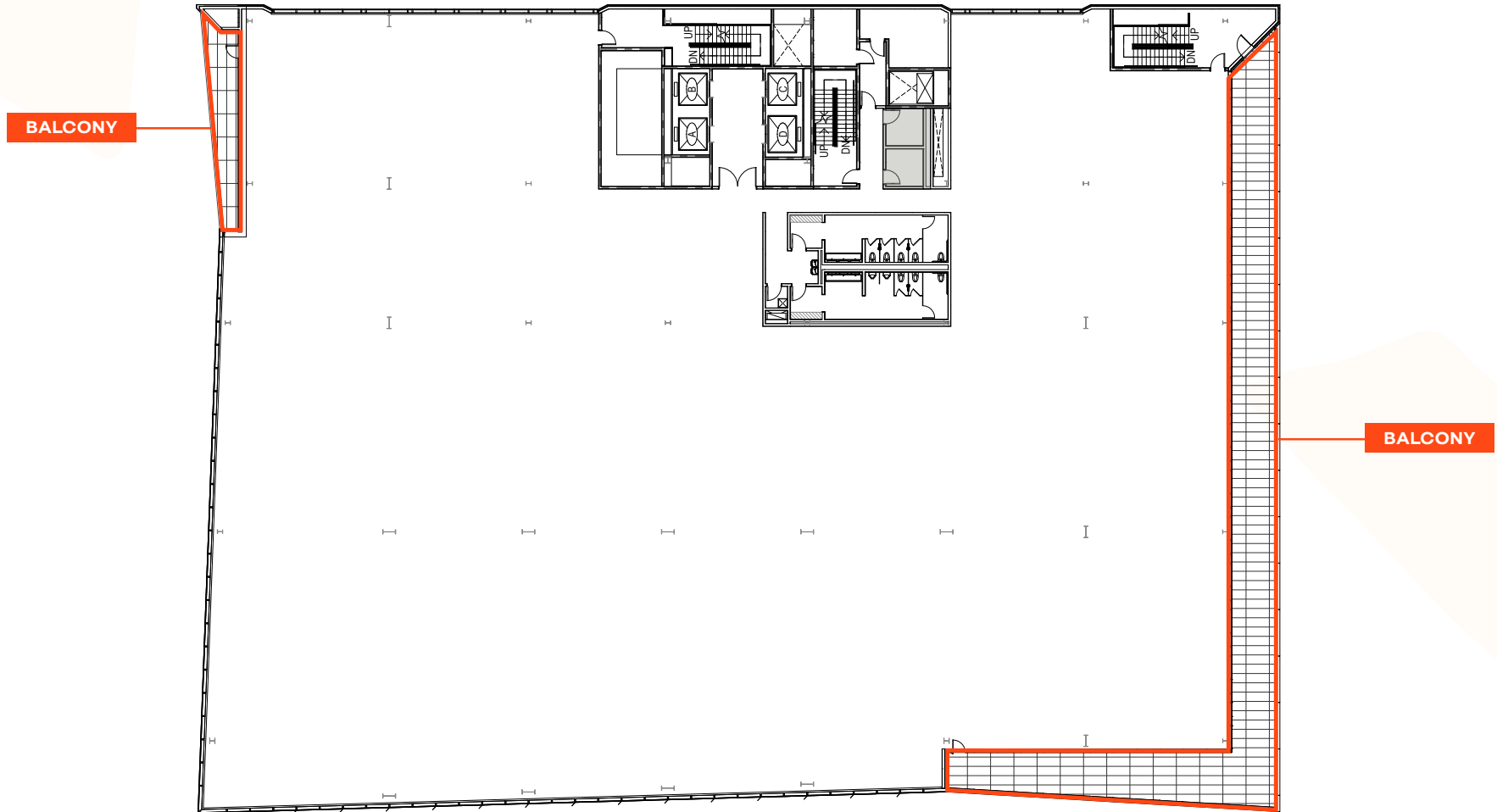
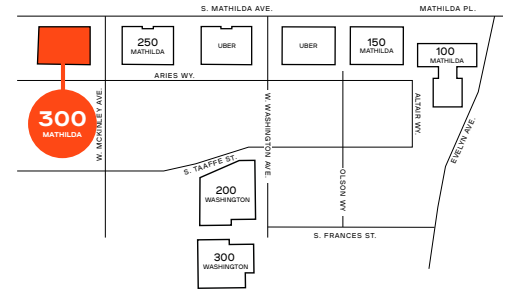


±38,115 SF

300 Mathilda | Fifth Floor

→ 2,365 SF terrace

→ Total 40,480 SF

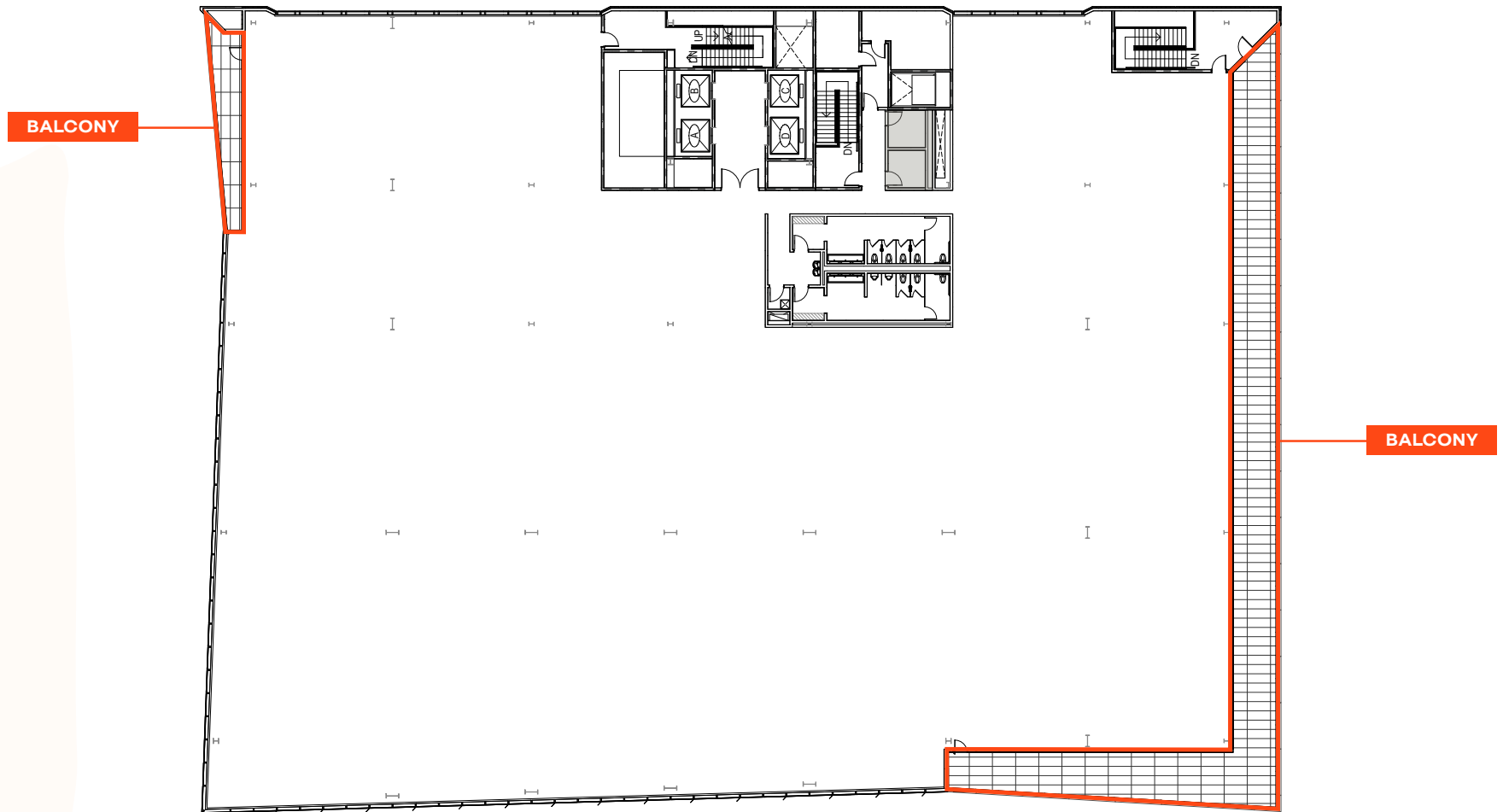
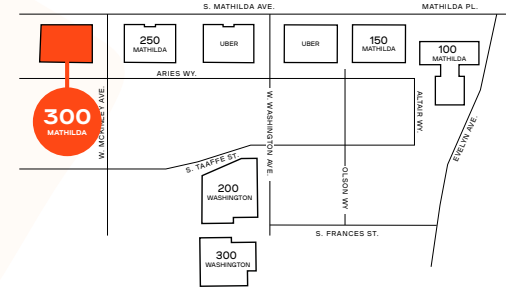


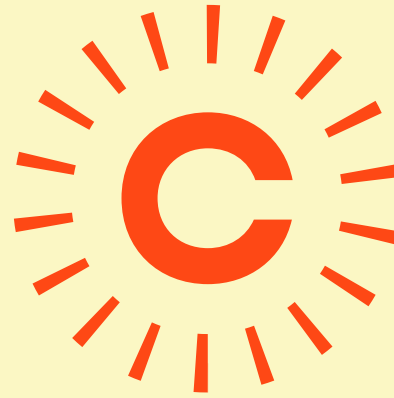
±38,115 SF

300 Mathilda | Sixth Floor

→ 2,365 SF terrace

→ Total 40,480 SF





Cityline is a dynamic destination in Silicon Valley's historic Downtown Sunnyvale. Sprawling over six centrally-located blocks, Cityline offers two luxury apartment complexes, 1 million square feet of office space, and 670,000 square feet of retail amenities. From anchor tenants like AMC and Whole Foods to speciality dining and entertainment options, visitors and residents have everything they need in just a few steps.

- **Experience Cityline's world-class shops, restaurants, and bars—there's always something new to enjoy**
- **±1,000 residential units for lease**
- **Abundant access to the outdoors at 1-acre City Park and Redwood Park**

A place to experience.

Bring excitement to running errands at Target or Whole Foods by walking along Historic Murphy Avenue, stumbling upon a unique event, or experiencing your new favorite meetup spot.

- Feel right at home at Cityline with 1,000 modern on-site residences and a vibrant, growing community
- Walking distance to two hotels



Flatstick Pub



Pacific Catch



Starbucks



Road Runner Sports



Whole Foods



Rumble



AMC



Target



Ulta Beauty



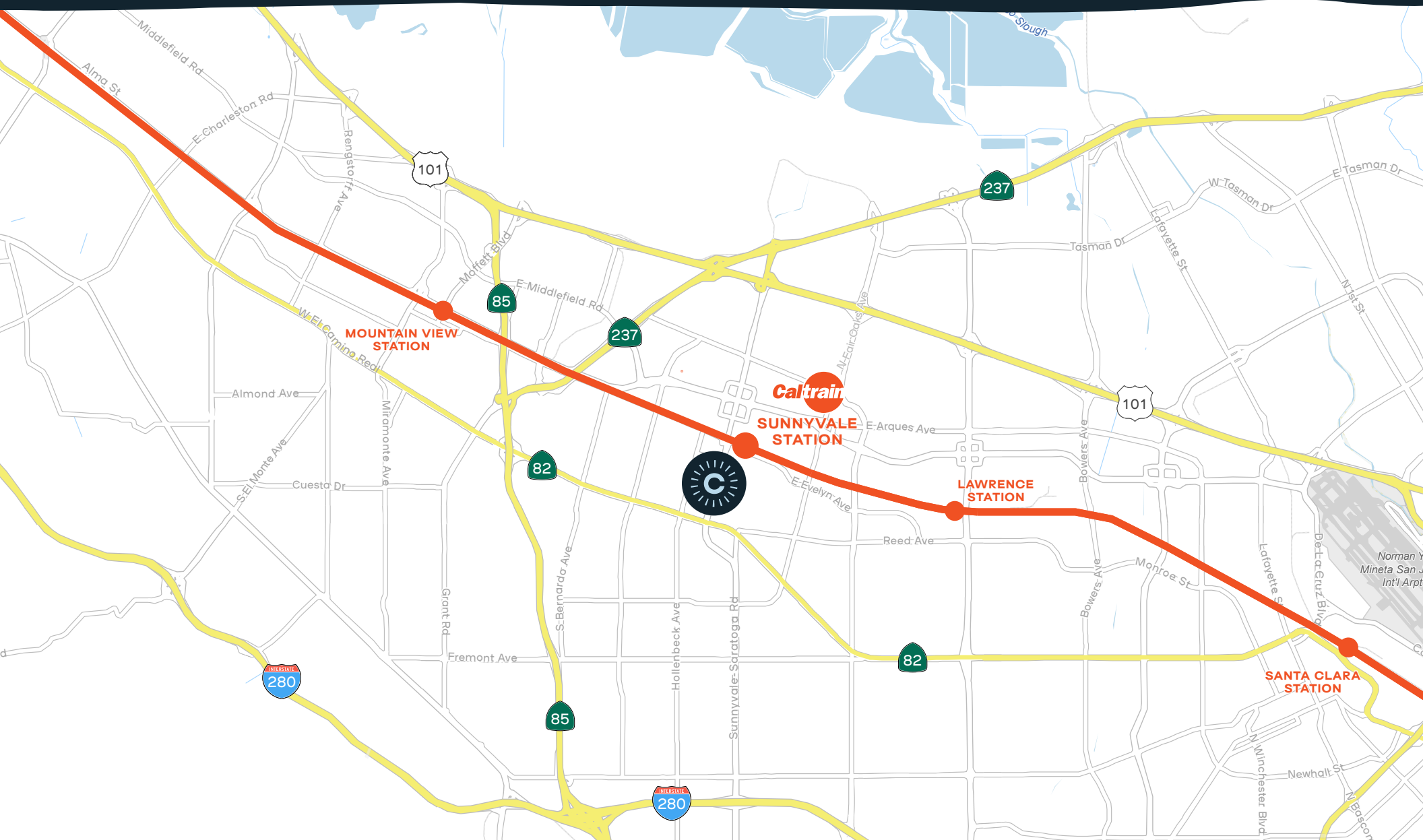
Urban Plates

Centrally located and easily accessible.

4 min drive to I-82

7 min drive to I-101 and I-85

10 min drive to I-280





- 5 minute walk to Sunnyvale Caltrain Station
- ±50 minutes to San Francisco on the Baby Bullet
- ±25 minutes to San Jose on Caltrain



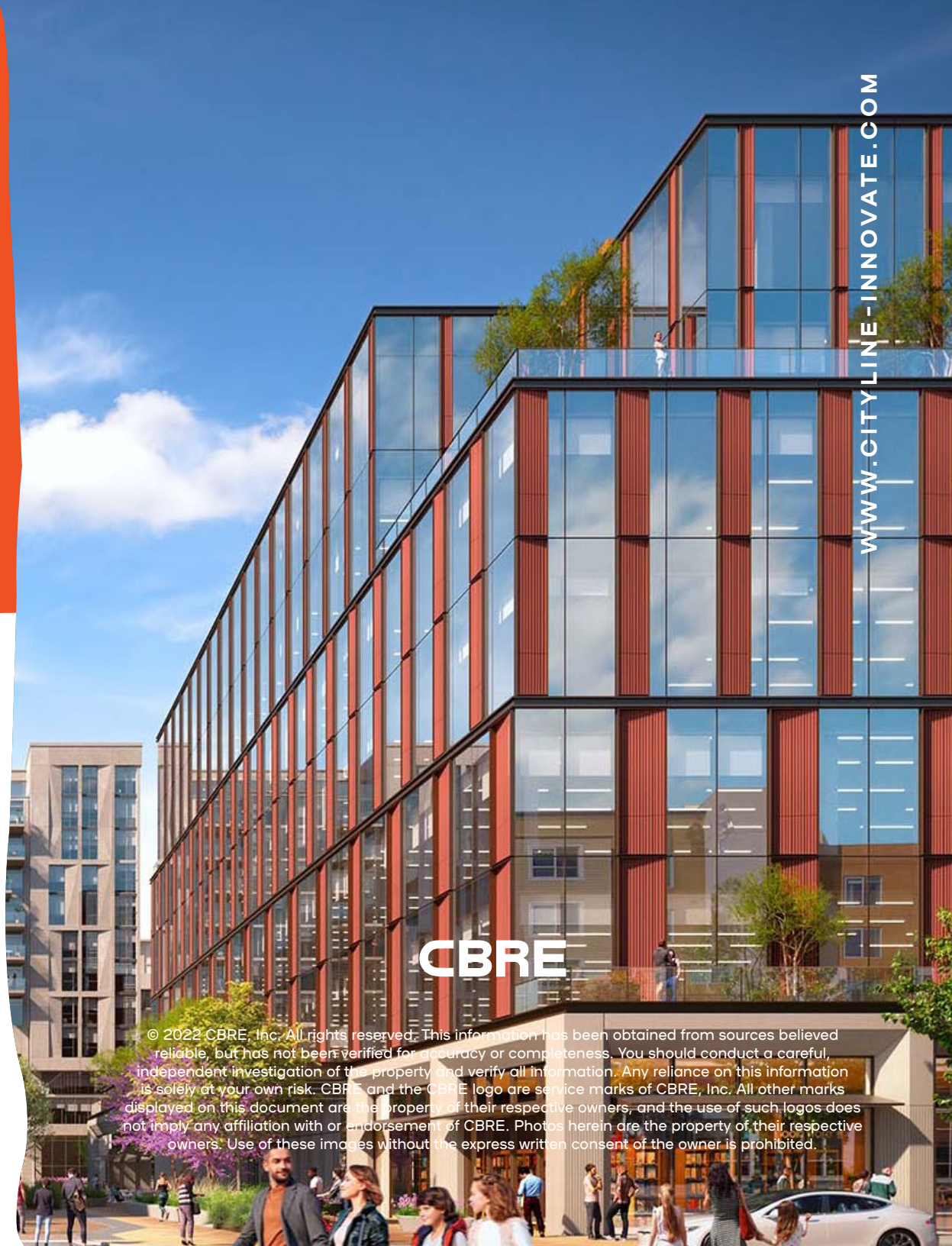


VINCENT SCOTT | CBRE

Lic. 01833636 | 408.453.7433
vincent.scott@cbre.com

MIKE BENEVENTO | CBRE

Lic. 00976786 | 408.453.7446
mike.benevento@cbre.com



WWW.CITYLINE-INNOVATE.COM

CBRE

© 2022 CBRE, Inc. All rights reserved. This information has been obtained from sources believed reliable, but has not been verified for accuracy or completeness. You should conduct a careful, independent investigation of the property and verify all information. Any reliance on this information is solely at your own risk. CBRE and the CBRE logo are service marks of CBRE, Inc. All other marks displayed on this document are the property of their respective owners, and the use of such logos does not imply any affiliation with or endorsement of CBRE. Photos herein are the property of their respective owners. Use of these images without the express written consent of the owner is prohibited.