



FORAKER COTM

PUEBLO AT PASEO

605 NW 28th Street, Oklahoma City, OK 73103

FOR LEASE

PRESENTED BY:

Jeremy Foraker

President

405.229.7917 | Direct

405.753.0016 | Office

jeremy@forakercompany.com

ForakerCompany.com

FORAKER CO[®] PUEBLO AT PASEO

605 NW 28th Street, Oklahoma City, OK 73103



PROPERTY SUMMARY

Available SF: 1,575 SF

Lease Rate: \$28.00 SF/yr (NNN)

Lot Size: 0.74 Acres

Building Size: 7,570 SF

Year Built: 2017

Zoning: Commercial

Cross Streets: NW 28th & Dewey Ave.

Jeremy Foraker
President
405.229.7917 | Direct
405.753.0016 | Office
jeremy@forakercompany.com

PROPERTY OVERVIEW

Available for lease is a 1,575 SF former restaurant and bar space in the heart of the Paseo Arts District. This space is fully equipped for food and beverage use and offers an outstanding opportunity for a restaurant, café, or bar operator looking to establish a presence in Oklahoma City's premier arts and entertainment district.

PROPERTY HIGHLIGHTS

- 1,575 SF of restaurant/bar space with existing build-out
- Prime location in the highly walkable Paseo Arts District
- Strong foot traffic and destination appeal, especially during monthly art events and festivals
- Surrounded by art galleries, local boutiques, and unique dining concepts
- High visibility within a thriving and creative community
- Large patio space

ForakerCompany.com

FORAKER C^o™ **PUEBLO AT PASEO**

605 NW 28th Street, Oklahoma City, OK 73103



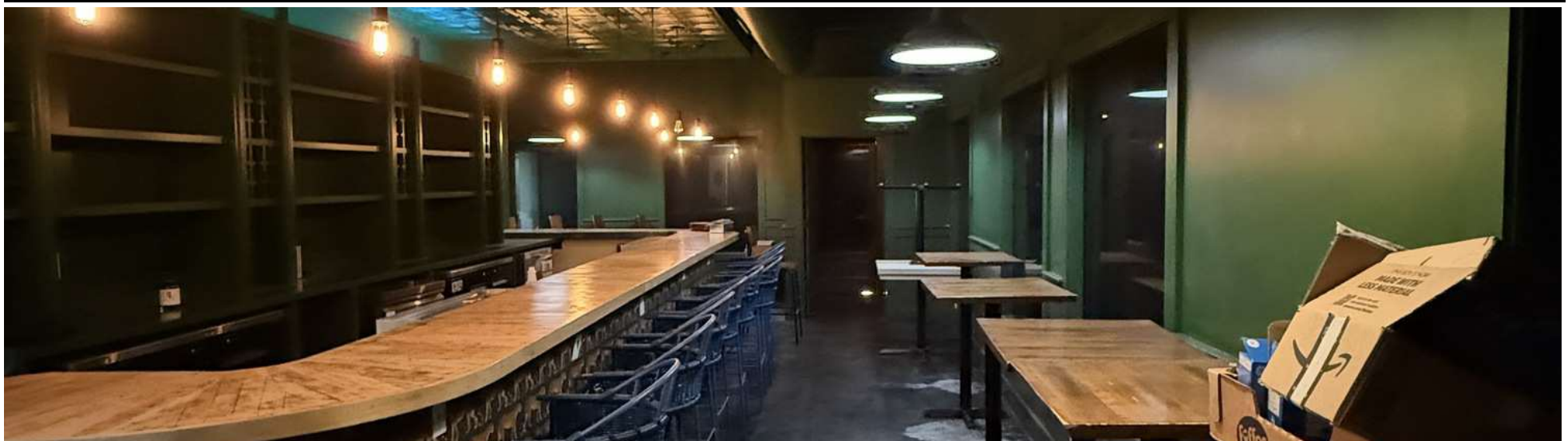
Jeremy Foraker
President
405.229.7917 | Direct
405.753.0016 | Office
jeremy@forakercompany.com

ForakerCompany.com

This information contained herein was obtained from sources believed reliable; however, Foraker Company makes no guarantees, warranties or representations as to the completeness or accuracy thereof. The presentation of this property is submitted subject to errors, omissions, change of price or conditions prior to sale or lease, or withdrawal without notice.

FORAKER CO[®] **PUEBLO AT PASEO**

605 NW 28th Street, Oklahoma City, OK 73103



Jeremy Foraker
President
405.229.7917 | Direct
405.753.0016 | Office
jeremy@forakercompany.com

ForakerCompany.com

This information contained herein was obtained from sources believed reliable; however, Foraker Company makes no guarantees, warranties or representations as to the completeness or accuracy thereof. The presentation of this property is submitted subject to errors, omissions, change of price or conditions prior to sale or lease, or withdrawal without notice.

FORAKER C^o

PUEBLO AT PASEO

605 NW 28th Street, Oklahoma City, OK 73103

Lease Rate:

\$28.00 SF/YR (NNN)

Total Space

1,575 SF

Lease Type:

NNN

Lease Term:

Negotiable

SPACE	SPACE USE	LEASE RATE	LEASE TYPE	SIZE (SF)	TERM	COMMENTS
605 NW 28th Street	Restaurant	\$28.00 SF/YR	NNN	1,575 SF	Negotiable	

Jeremy Foraker

President

405.229.7917 | Direct

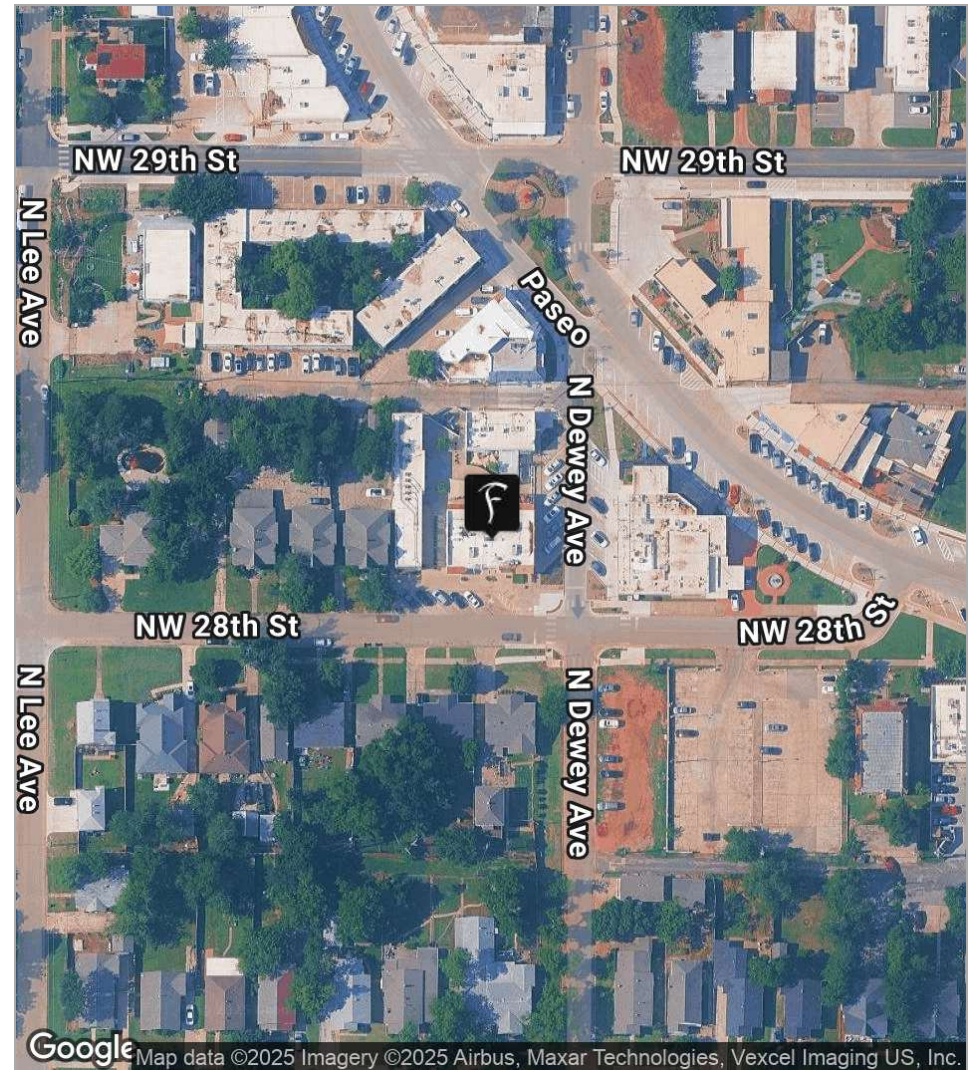
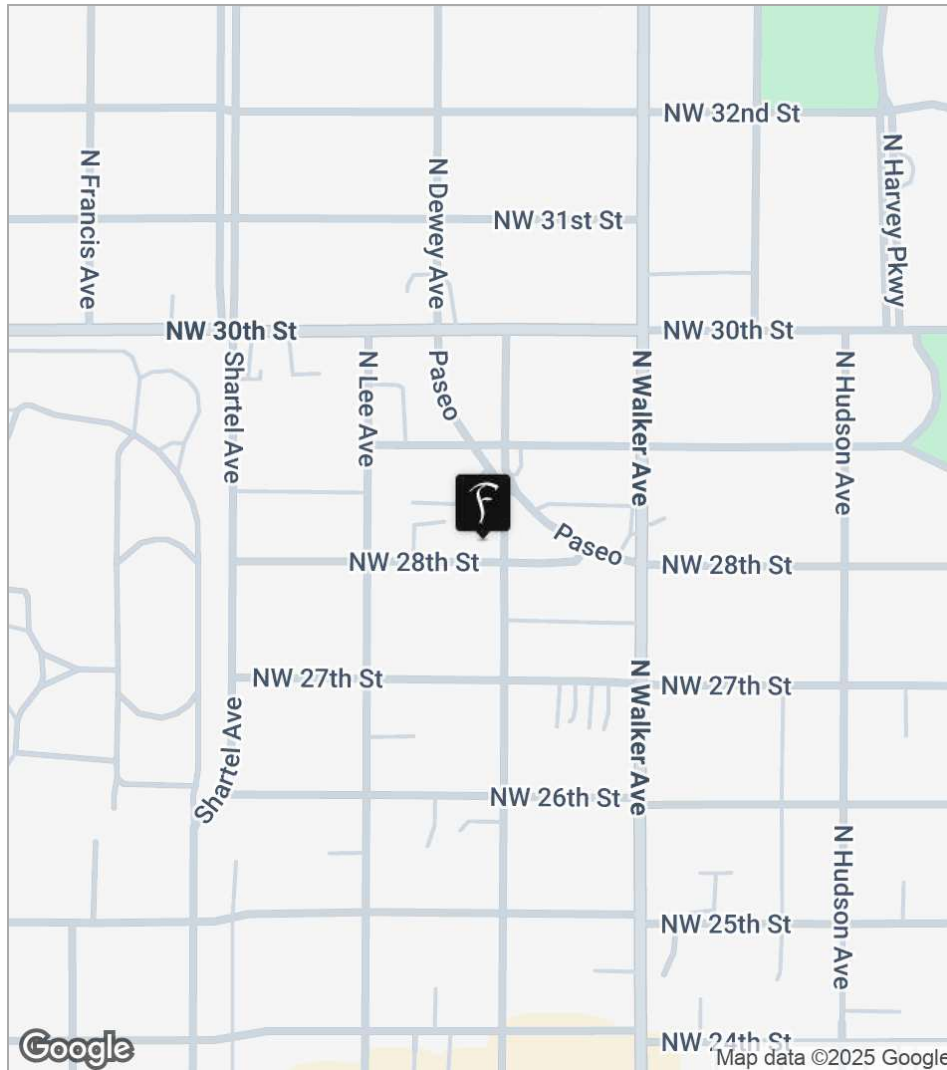
405.753.0016 | Office

jeremy@forakercompany.com

ForakerCompany.com

FORAKER CO[®] **PUEBLO AT PASEO**

605 NW 28th Street, Oklahoma City, OK 73103



Jeremy Foraker
President
405.229.7917 | Direct
405.753.0016 | Office
jeremy@forakercompany.com

ForakerCompany.com

This information contained herein was obtained from sources believed reliable; however, Foraker Company makes no guarantees, warranties or representations as to the completeness or accuracy thereof. The presentation of this property is submitted subject to errors, omissions, change of price or conditions prior to sale or lease, or withdrawal without notice.