

EAGLE PLAZA OFFICE BUILDING

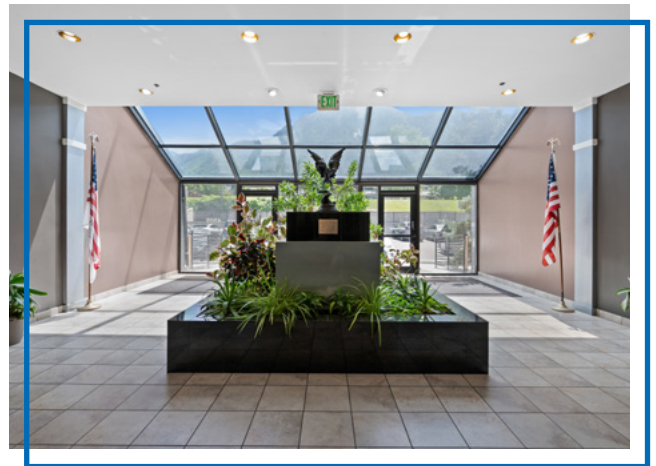
FOR LEASE



PROPERTY DETAILS

4505 S. Wasatch Blvd., Millcreek, UT 84124

- Suite 340 Available: 1,057 SF
- Parking Ratio: 4/1,000 SF
- Unmatched Mountain and Valley Views
- Direct Access to I-215
- Nearby Olympus Cove Retail Amenities
- Shared Building Amenities Available



SKYE GALLEY
sgalley@newmarkmw.com
direct 801.971.3602
[View Profile](#)

**FULL SERVICE
COMMERCIAL REAL ESTATE**
312 East South Temple
Salt Lake City, Utah 84111
Office 801.456.8800
www.newmarkmw.com



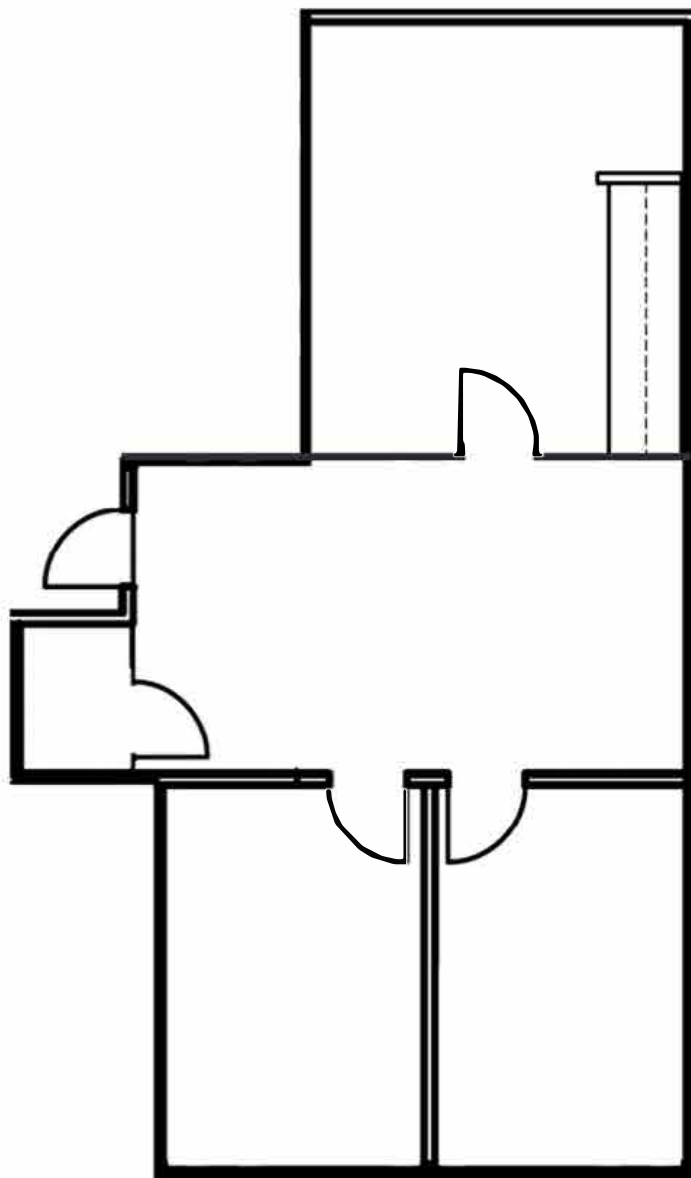
NEWMARK
MOUNTAIN WEST

SKYE GALLEY
sgalley@newmarkmw.com
direct 801.971.3602
[View Profile](#)

**FULL SERVICE
COMMERCIAL REAL ESTATE**
312 East South Temple
Salt Lake City, Utah 84111
Office 801.456.8800
www.newmarkmw.com

EAGLE PLAZA OFFICE BUILDING

FLOOR PLAN

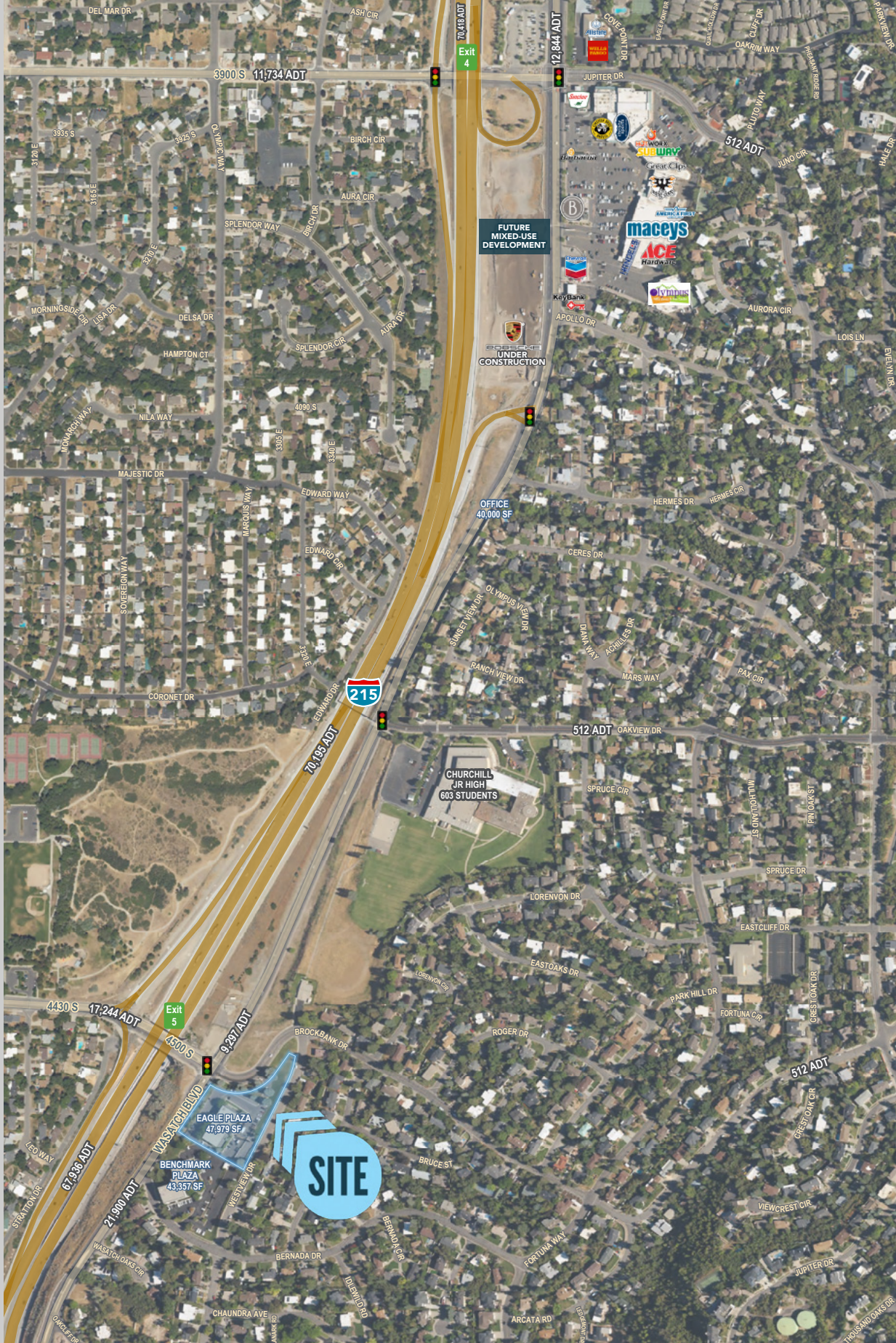


SUITE 340
1,057 RSF



SKYE GALLEY
sgalley@newmarkmw.com
direct 801.971.3602
[View Profile](#)

**FULL SERVICE
COMMERCIAL REAL ESTATE**
312 East South Temple
Salt Lake City, Utah 84111
Office 801.456.8800
www.newmarkmw.com



SKYE GALLEY
 sgalley@newmarkmw.com
 direct 801.971.3602
[View Profile](#)

**FULL SERVICE
 COMMERCIAL REAL ESTATE**
 312 East South Temple
 Salt Lake City, Utah 84111
 Office 801.456.8800
www.newmarkmw.com