

This map was prepared for Assessment & Taxation purposes only and was NOT prepared nor is it suitable for legal, engineering or surveying purposes.

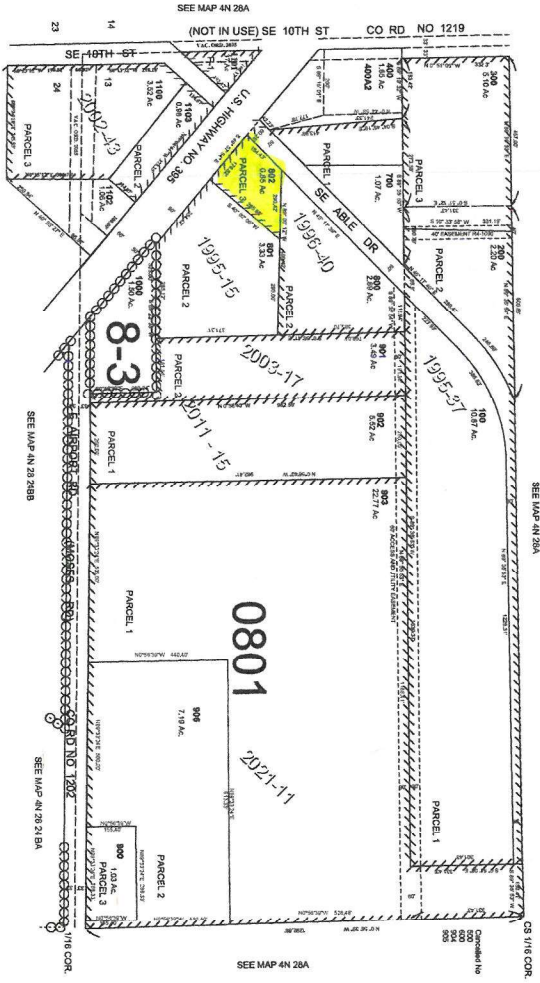


SW 1/2 SW 1/4 SEC 13 T4N R28E WM
UMATILLA COUNTY

SCALE: 1" = 200'

4N 28 13C

AERIAL PHOTO NO 2P-21



4N 28 13C
Revised 05-10-2021