



BUILDING SIZE: 455,000 SF | AVAILABLE: 192,500 - 455,000 SF

237 Greenwood Court McDonough, GA

BUILDING SPECIFICATIONS

- 455,000 square feet available (can be split to 192,500 SF)
- 8,400 SF of office space
 - Office A +/- 5,700
 - Office B +/- 2,700
- 32' minimum clear height
- 25.38 acres
- Rail capable with existing rail
- 50' x 50' column spacing
- 75 dock high doors and 2 drive-in door
- 185' Truck Court
- 143 Car Parking Spaces (Expandable to 226)
- 80 Trailer Storage Spaces
- ESFR Sprinkler
- 3,000 Amps of power

ADDITIONAL INFORMATION

- Outdoor employee engagement areas
- Existing Forklift charger disconnects
- Private green space for employees in front of Office B
- Strategically located at end of drive for safety and more efficient



Excellent accessibility



Rail capable



Green space



Forklift charger disconnects



BUILDING SIZE: 455,000 SF | AVAILABLE: 192,500 - 455,000 SF

237 Greenwood Court McDonough, GA

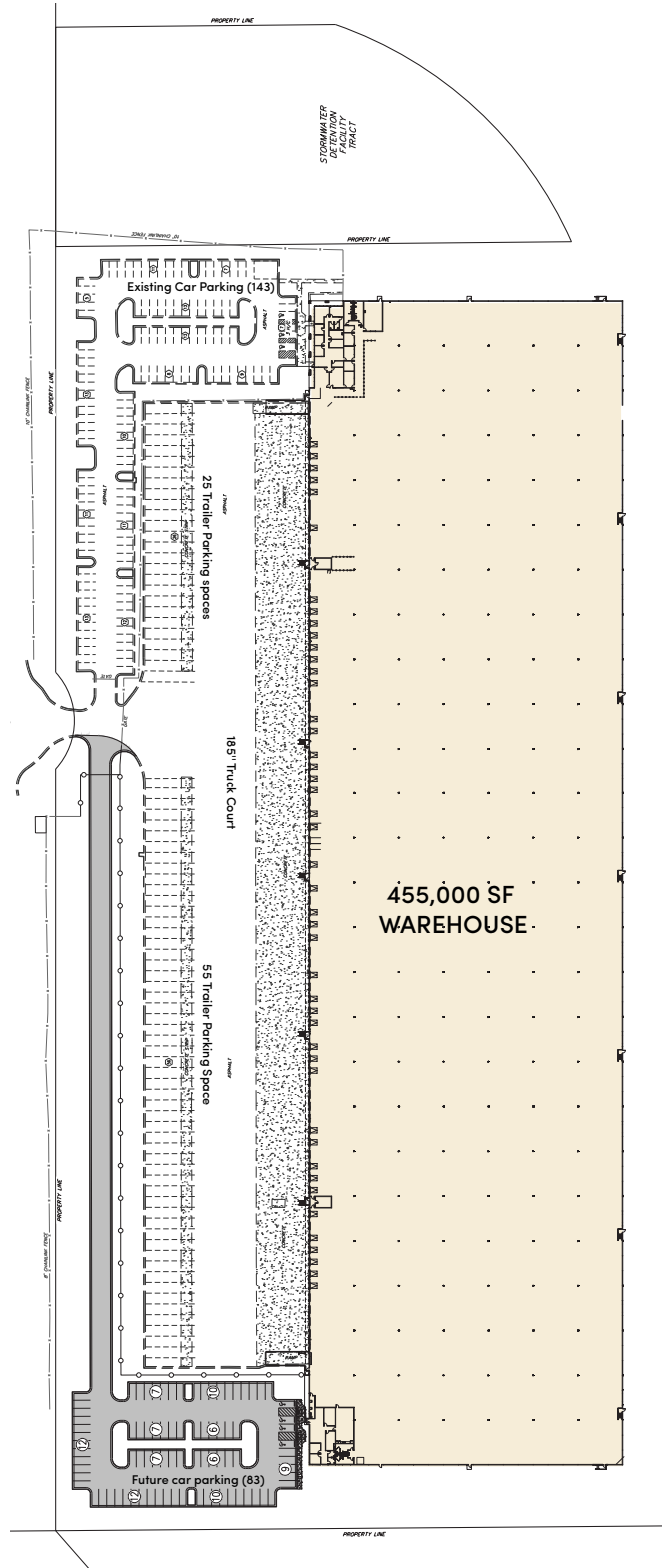


237 Greenwood Court

McDonough, GA

Building Size: 455,000 SF | Building Availability: 192,500 - 455,000 SF

Site Plan

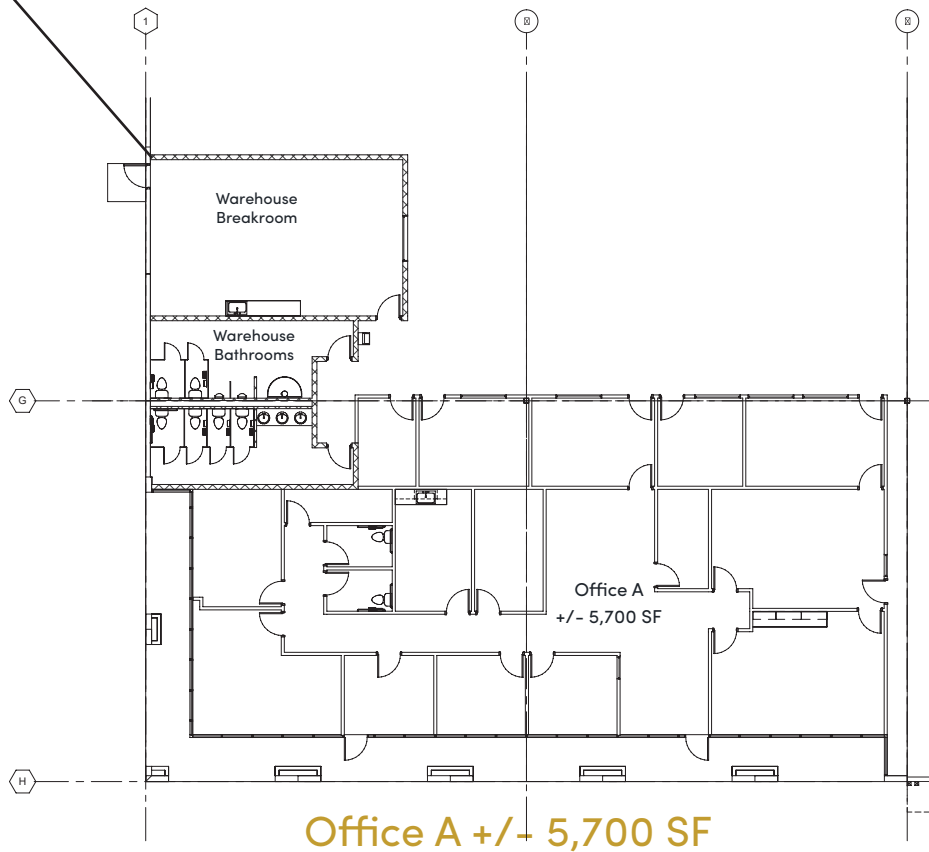
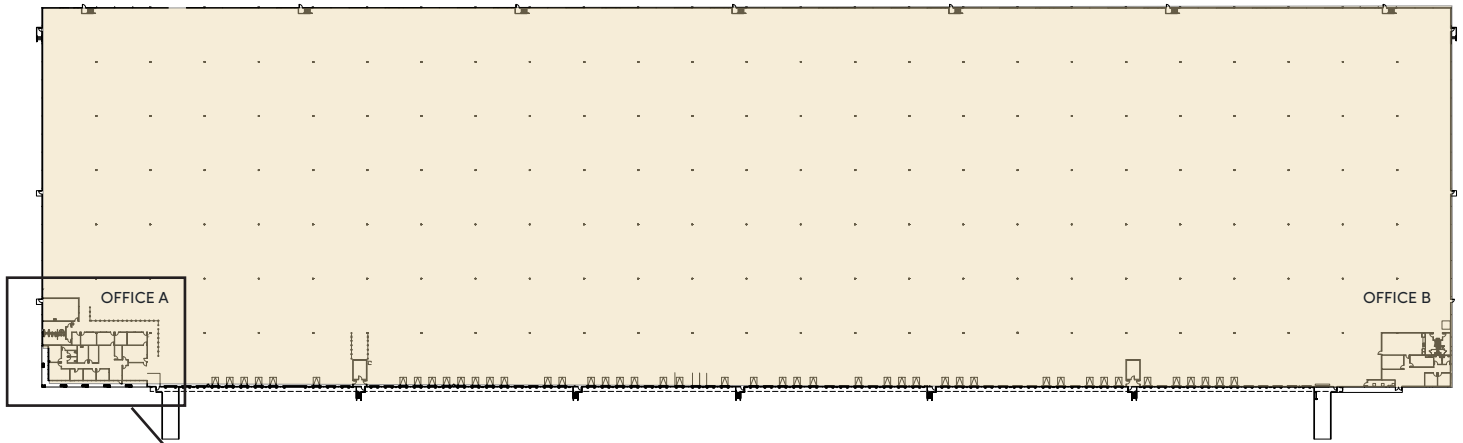


237 Greenwood Court

McDonough, GA

Building Size: 455,000 SF | Building Availability: 192,500 - 455,000 SF

Office A Floor Plan



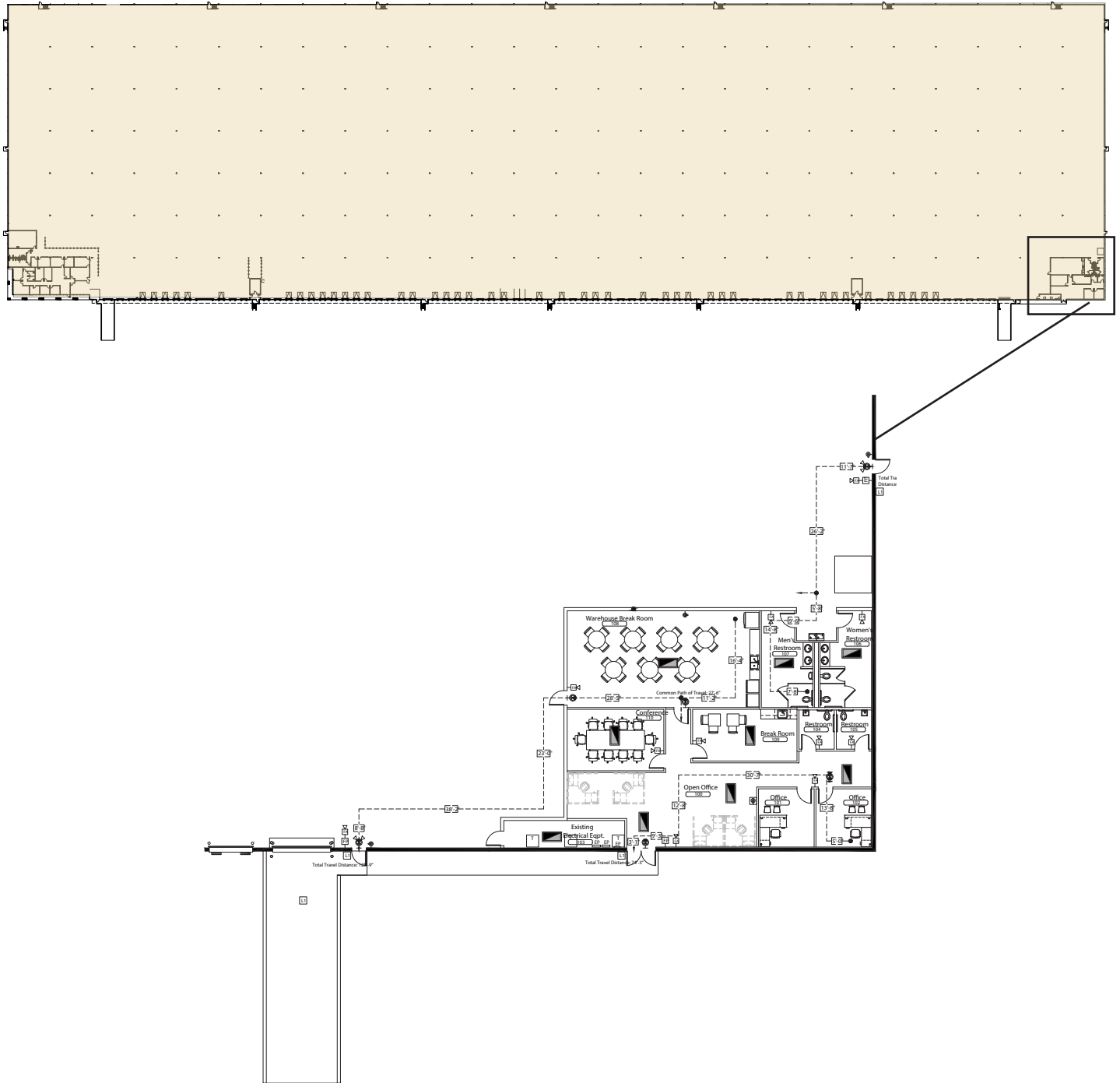
Office A +/- 5,700 SF

237 Greenwood Court

McDonough, GA

Building Size: 455,000 SF | Building Availability: 192,500 - 455,000 SF

Office B Floor Plan



Office B +/- 2,700