

NO.	FLOOR	BASE	WALLS				CEILING HEIGHT	CEILING MAT.	REMARKS
			NORTH	EAST	SOUTH	WEST			
101	CT-1	CT-1	PT-1	PT-1	PT-1	PT-1	10'-0"	2X4' ACCOUST	
102	CP-T-1	B-1	PT-2	PT-2	PT-2	PT-2	10'-0"	2X4' ACCOUST	
103	GP-T-1	B-1	PT-2	PT-2	PT-2	PT-2	10'-0"	2X4' ACCOUST	
104	VC-T-1	B-1	PT-2	PT-2	PT-2	PT-2	10'-0"	2X4' ACCOUST	
105	VC-T-1	B-1	PT-2	PT-2	PT-2	PT-2	10'-0"	2X4' ACCOUST	

NOTE: 1. WHERE DISSIMILAR FLOOR SURFACES MEET, CONTR TO APPLY VINYL TRANSITION STRIP TO MATCH B-1.
2. BLINDS FOR BUILDING TO BE DETERMINED BY TENANT WITH PROPERTY MANAGER APPROVAL.

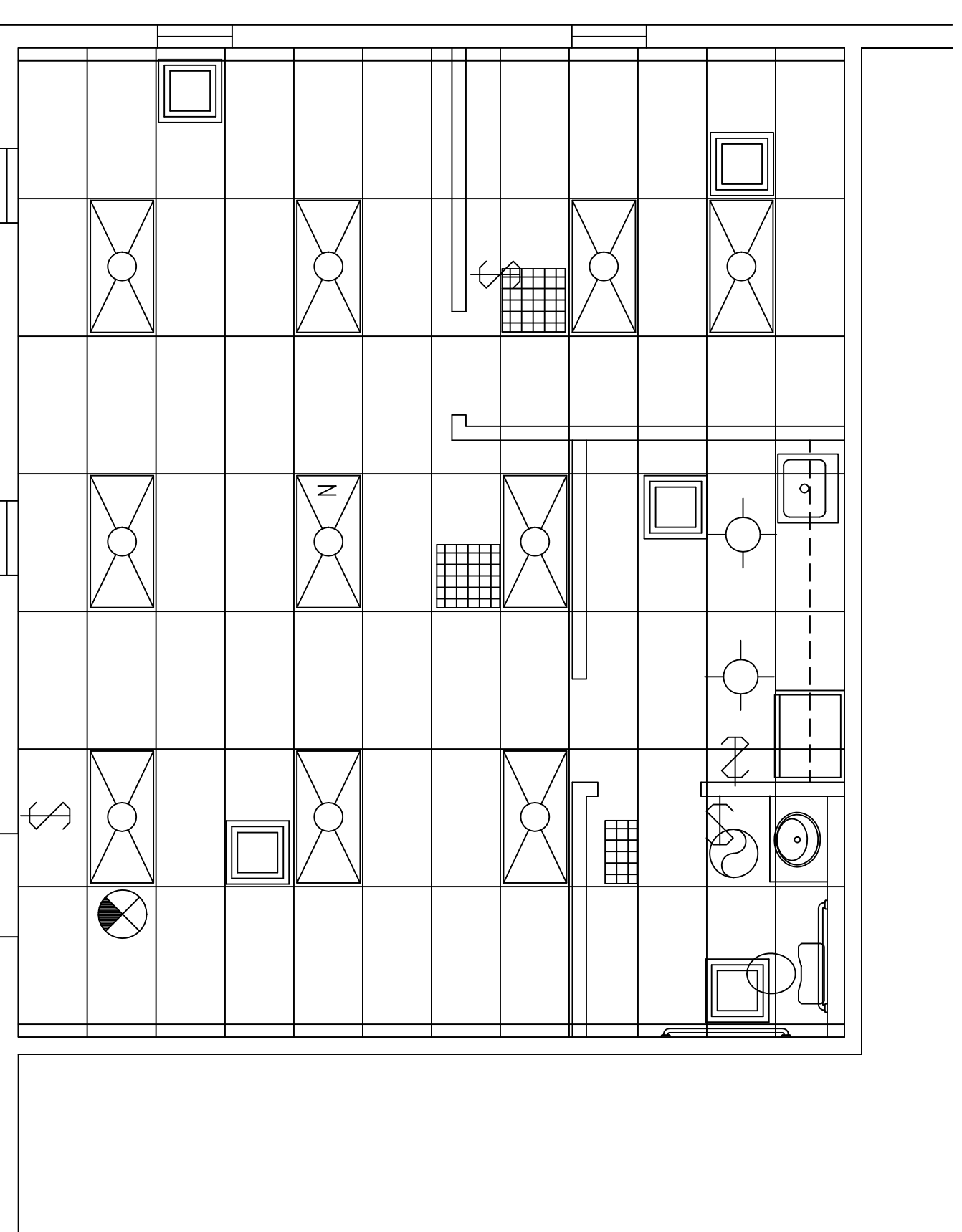
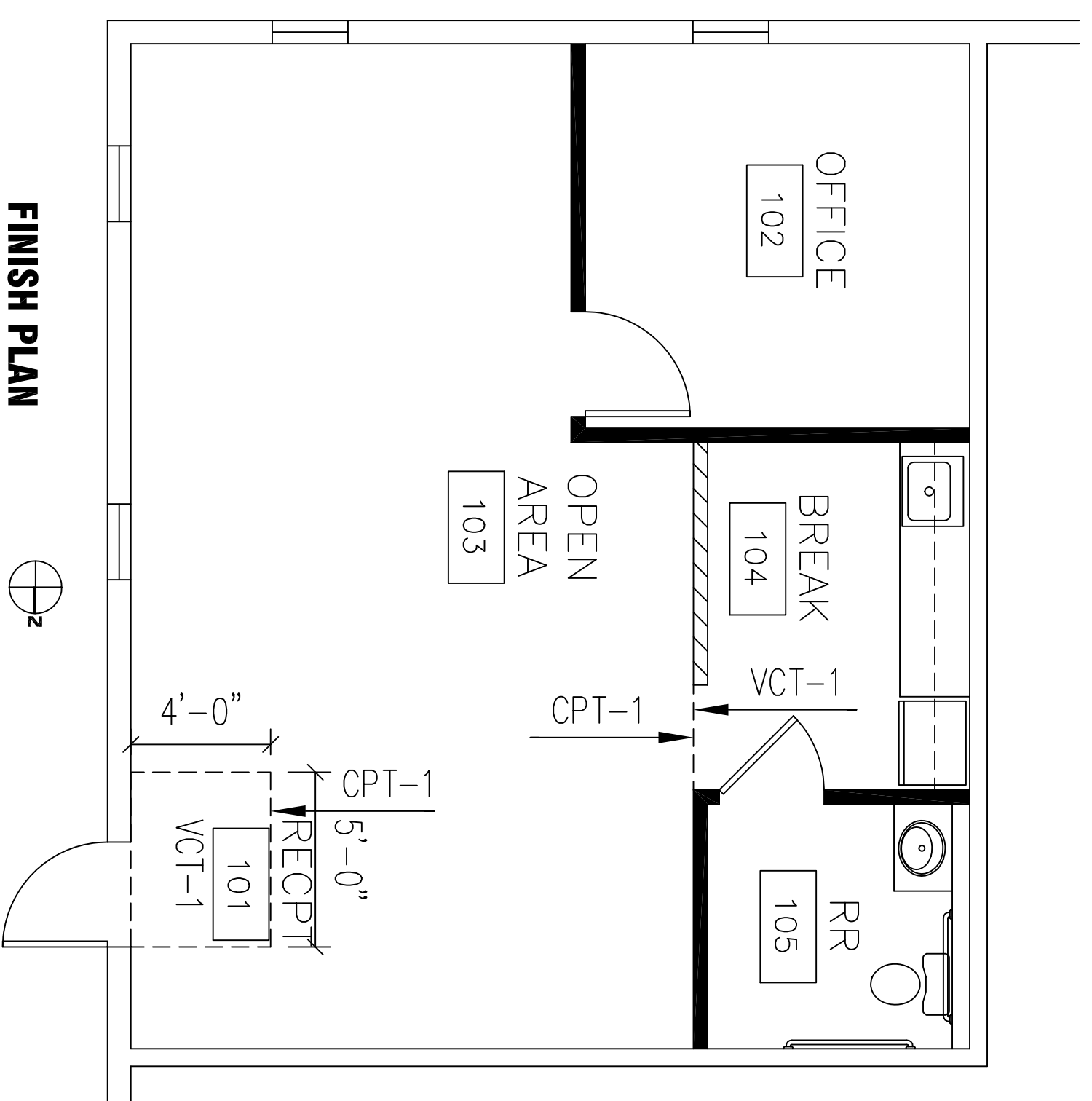
ROOM FINISH SCHEDULE

FINISHES

FLOORING
 CT-1 CERAMIC TILE, TO BE DETERMINED BY OWNER.
 CP-T-1 CARPET
 VC-T-1 VINYL COMPOSITION TILE
 BASE
 B-1 4" VINYL COVERED BASE, 120" ROLLED GOODS
 WALLS
 PT-1 PAINT, FLAT FINISH, 1 COAT PRIMER, 2 COATS FINISH PAINT
 PT-2 PAINT, FLAT FINISH, 1 COAT PRIMER, 2 COATS FINISH PAINT
 PT-3 PAINT, EG-SHEL FINISH, 1 COAT PRIMER, 2 COATS FINISH PAINT
 CEILING
 2X2 BLDG STD ACCOUSTICAL TILE & GRID, WHITE
 MISCELLANEOUS
 PL-1 PLASTIC LAMINATE

GENERAL FINISH NOTES

- EXISTING VINYL COMPOSITION TILE FLOORING TO REMAIN.
- PAINT ALL EXISTING WALLS 1 COAT FINISH PAINT.
- PAINT ALL NEW WALLS 1 COAT PRIMER, 2 COATS FINISH PAINT.
- NEW WALLS TO RECEIVE 4" VINYL BASE TO MATCH EXISTING.



REFLECTED CEILING LEGEND

NEW 2'x4' PARABOLIC FIXTURE - VERIFY STYLE W/ BLDG MGMT
 NEW 2'x4' PARABOLIC NIGHT LIGHT FIXTURE, VERIFY STYLE W/ BLDG MGMT
 NEW 2'x4' CEILING GRID BUILDING STANDARD

RETURN AIR
 LIGHT SWITCH
 EXIT SIGNS

SUPPLY
 CAN LIGHT
 COMMERCIAL GRADE VENT/LIGHT

GENERAL CEILING NOTES

- SUPPORT NEW CEILING TO DECK ABOVE AS REQUIRED.
- ADD HVAC BOXES, DIFFUSERS, ETC. AS REQUIRED TO SUPPORT USE OF PEOPLE SPACE.
- CONTR RESPONSIBLE FOR LOCATING THERMOSTATS WITH TENANT FURNITURE

ALLSTATE INSURANCE
 GREENWOOD, INDIANA

REFLECTED CEILING PLAN & FINISH SCHEDULE

Design Applications, Inc.

10440 Sugar Ridge Way
 Indianapolis, Indiana 46239
 phone: (317) 796-3977
 fax: (317) 862-8567

Issue:
 REVIEW SET

Date:
 24 MAY 2011

Sheet:

A2-1