

4701 RANDOLPH ROAD

# RANDOLPH MEDICAL CENTER



READY-TO-GO MEDICAL SUITES!

**\$33.00 RSF**

## HIGHLIGHTS

- Conveniently located medical office building
- Surrounded by 6,805 households within a 1 mile radius, with virtually no competition
- Convenient access to patients coming from Silver Spring, Wheaton, Rockville & Bethesda
- Abundant free parking (5.0/1,000)
- 7:00 AM - 7:00 PM building hours
- Excellent medical tenant mix for referrals
- Numerous retail and amenities a short drive away

**MEDICAL  
SUITES  
AVAILABLE**



MEDIAN AGE  
**38.8**



2022 POPULATION  
**187,844**



MEDIAN HH INCOME  
**\$97,226**



**3 MILES  
FROM SITE**

[www.scheerpartners.com](http://www.scheerpartners.com)

**301-337-4700**



**Scheer Partners**

*A Reputation for Results*

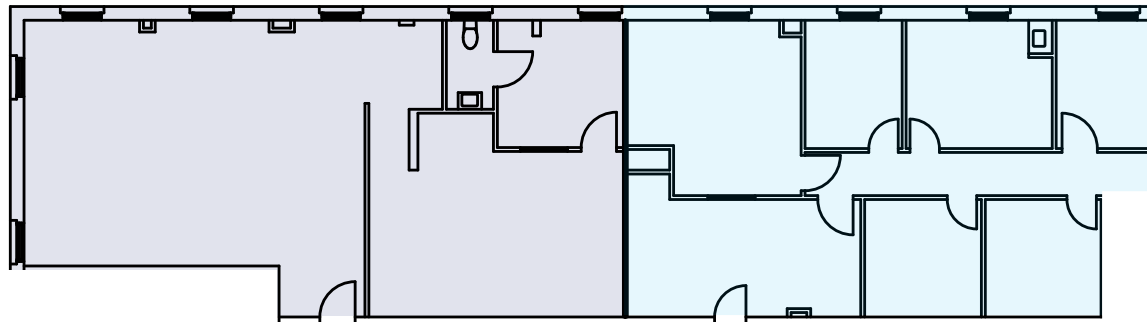
# FLOOR PLANS

## Suite G04 & G05 - Medical Buildout

1,041 - 2,098 SF

Suite G04 - 1,447 SF

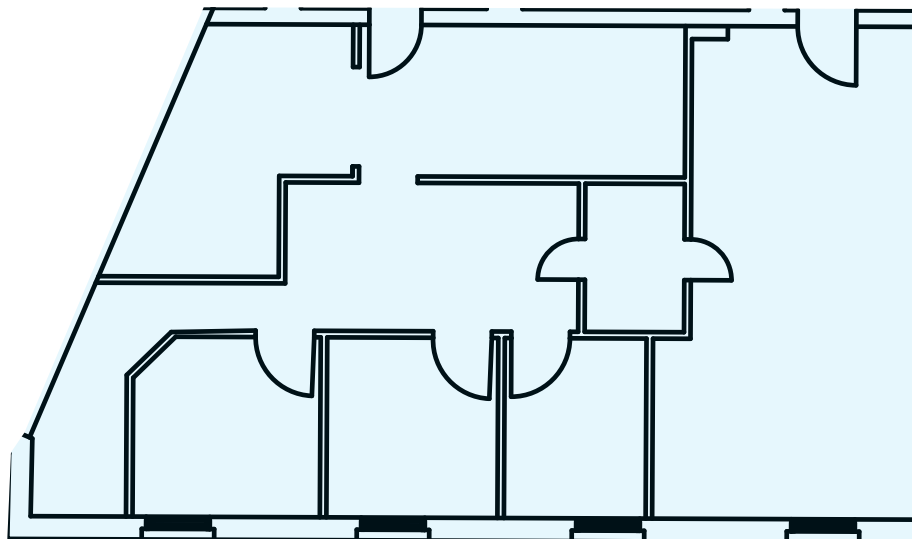
Suite G05 - 918 SF



\*Former pharmacy

## Suite G06 - Medical Buildout

1,272 SF



**Nathan Crowe** - [ncrowe@scheerpartners.com](mailto:ncrowe@scheerpartners.com) - 301.337.4730

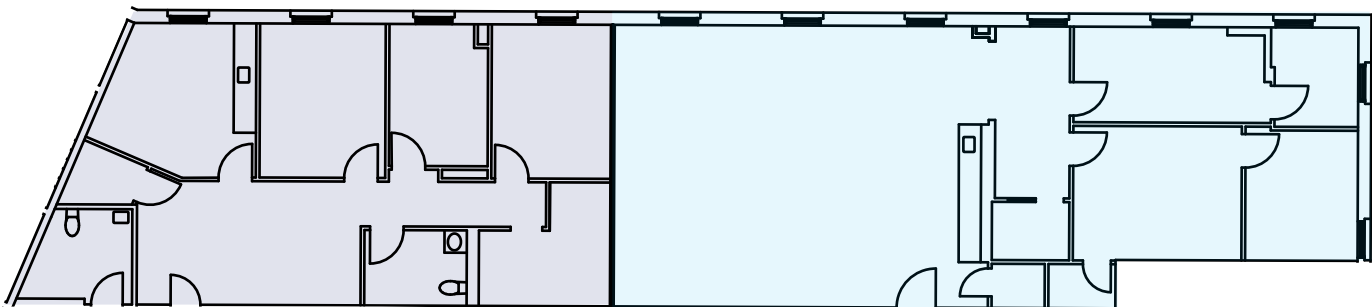
**Katie Datin** - [kdatin@scheerpartners.com](mailto:kdatin@scheerpartners.com) - 301.337.4707

**Suite G09 & G11 - Medical Buildout**

**1,368 - 1,922 SF**

**Suite G09 - 1,368 SF**

**Suite G11 - 1,922 SF**



**3,290 SF Contiguous**

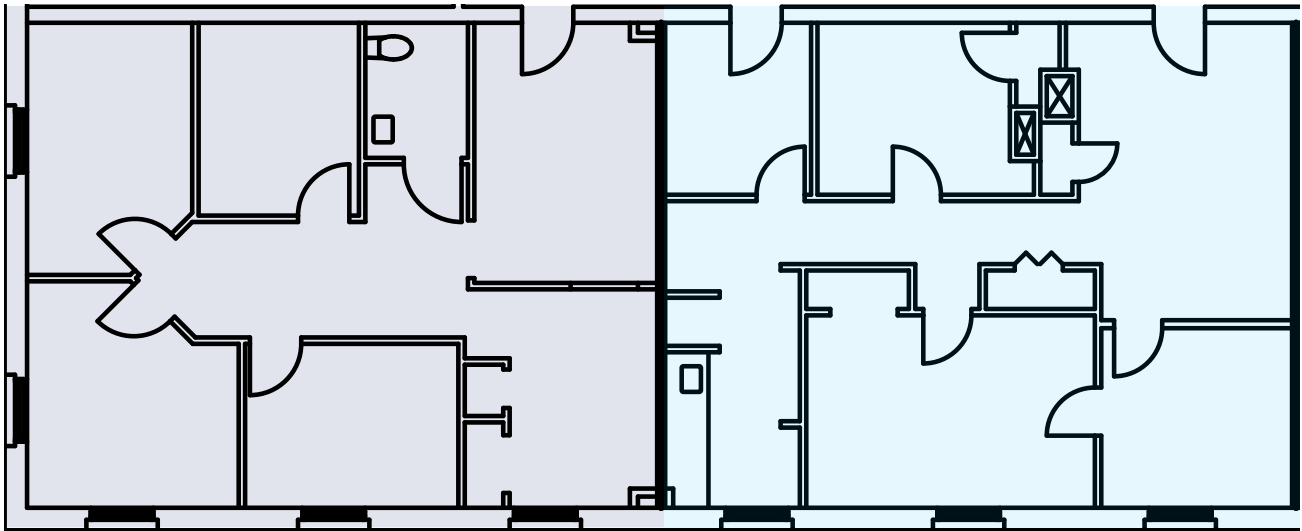
# FLOOR PLANS

## Suite 101 & 103 - Medical Buildout

1,041 - 2,098 SF

Suite 103 - 1,057 SF

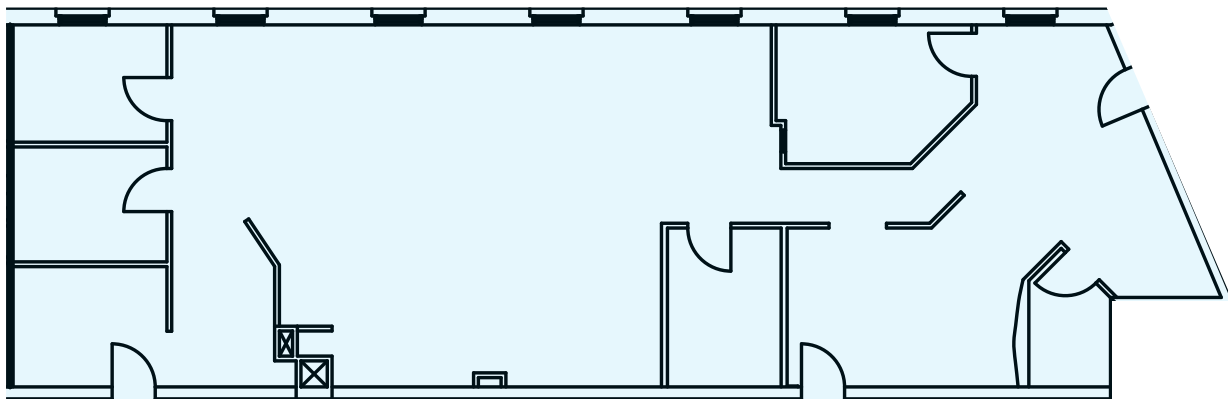
Suite 101 - 1,041 SF



## Suite 105 - Medical Buildout

2,524 SF

\*Ready-to-go physical therapy



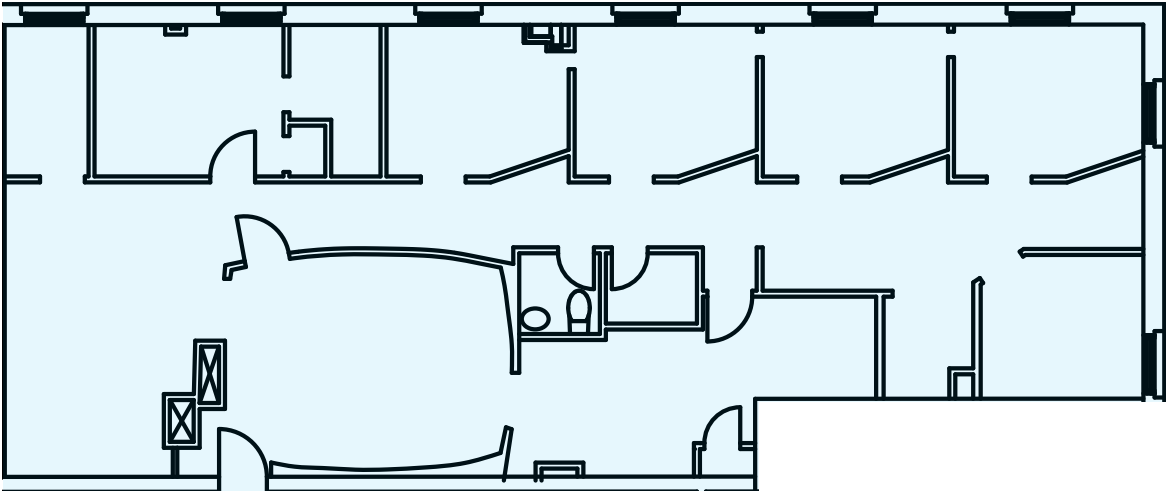
**Nathan Crowe** - [ncrowe@scheerpartners.com](mailto:ncrowe@scheerpartners.com) - 301.337.4730

**Katie Datin** - [kdatin@scheerpartners.com](mailto:kdatin@scheerpartners.com) - 301.337.4707

**Suite 110 - Dental Suite**

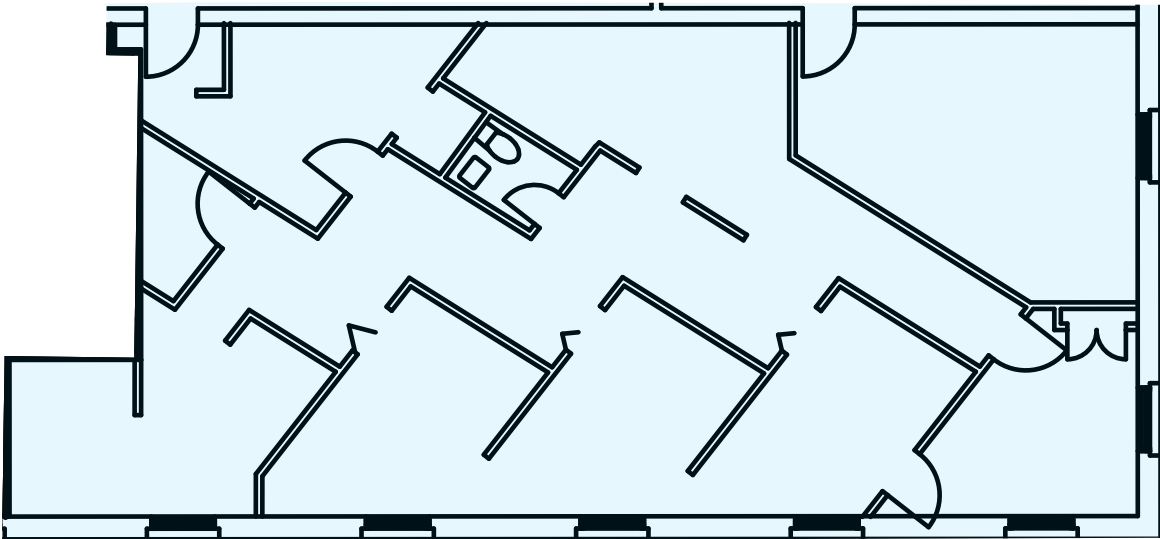
**1,907 SF**

**\*Former dentist suite**



**Suite 114 - Dental Suite**

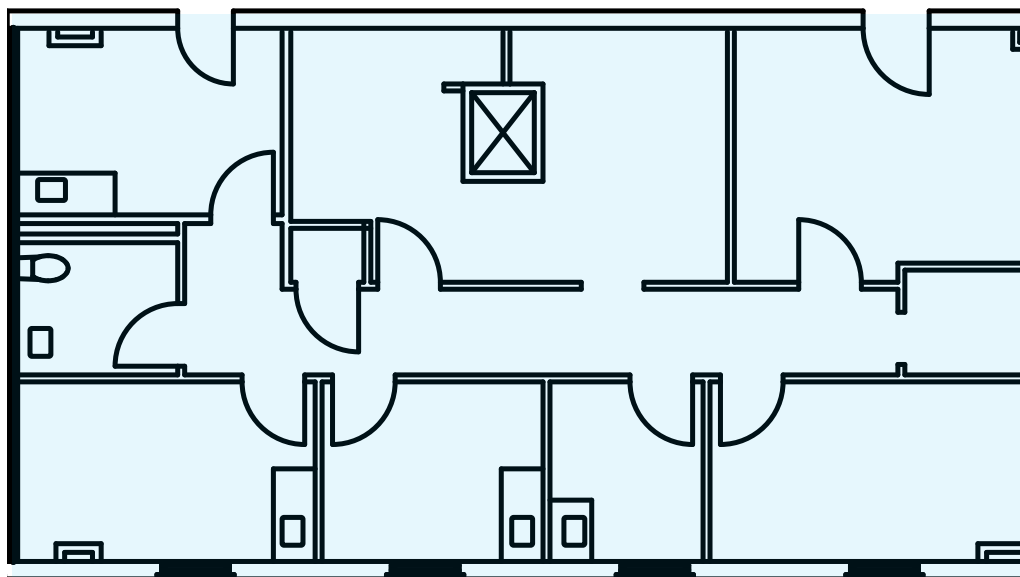
**1,715 SF**



# FLOOR PLANS

## Suite 203 - Medical Buildout

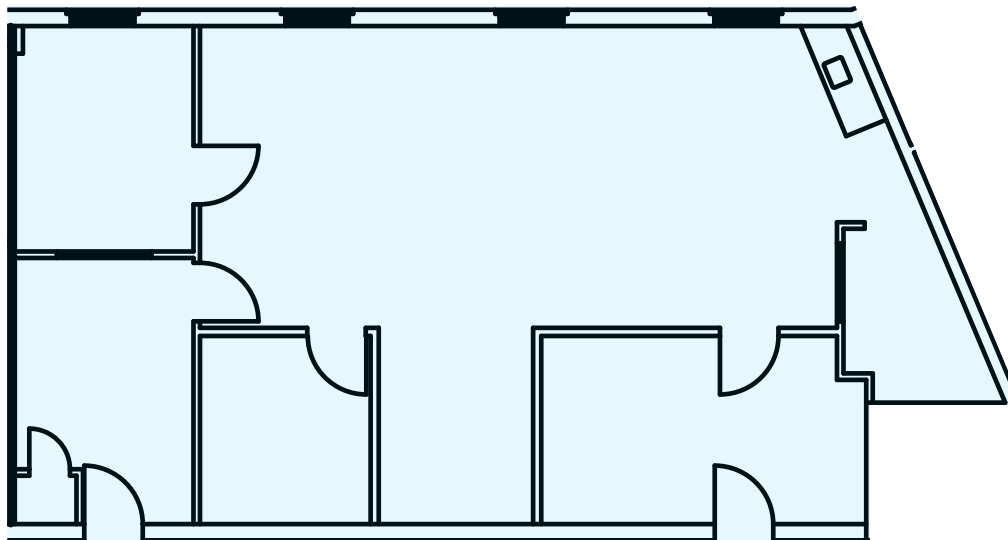
1,566 SF



## Suite 208 - Medical Buildout

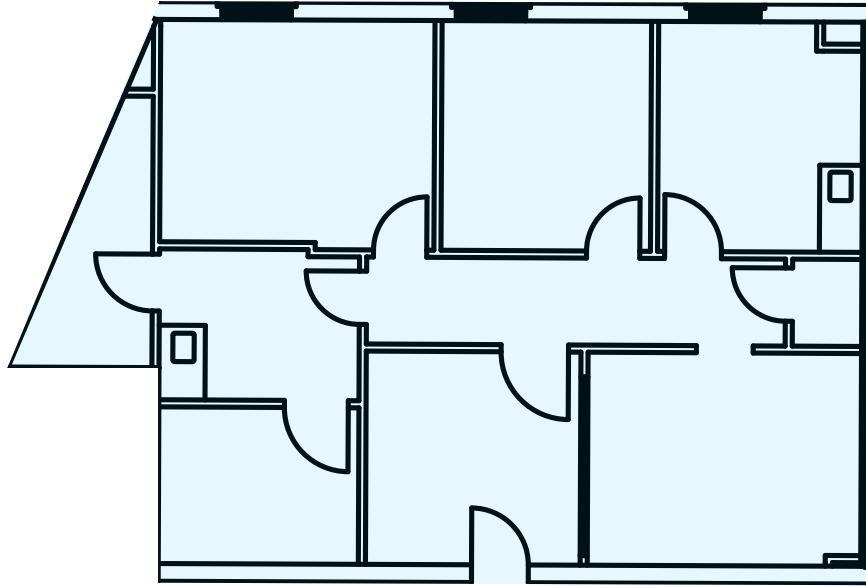
1,510 SF

\*Former physical therapy suite



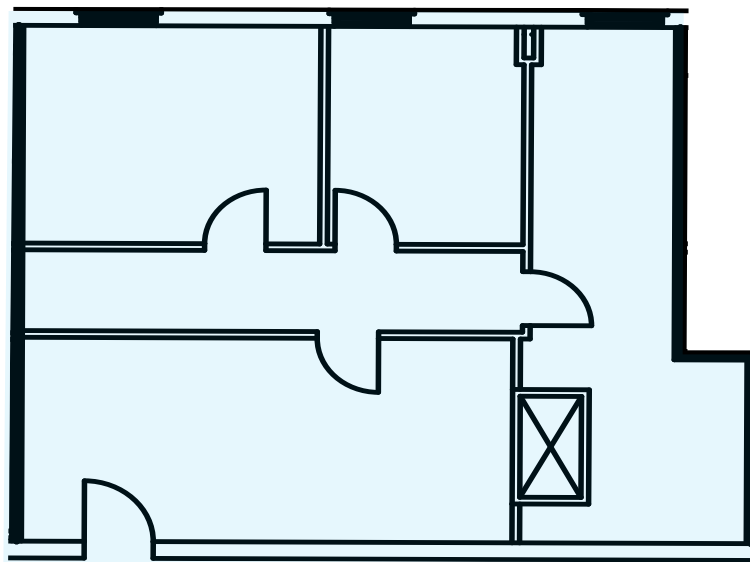
## Suite 209A - Medical Buildout

1,161 SF

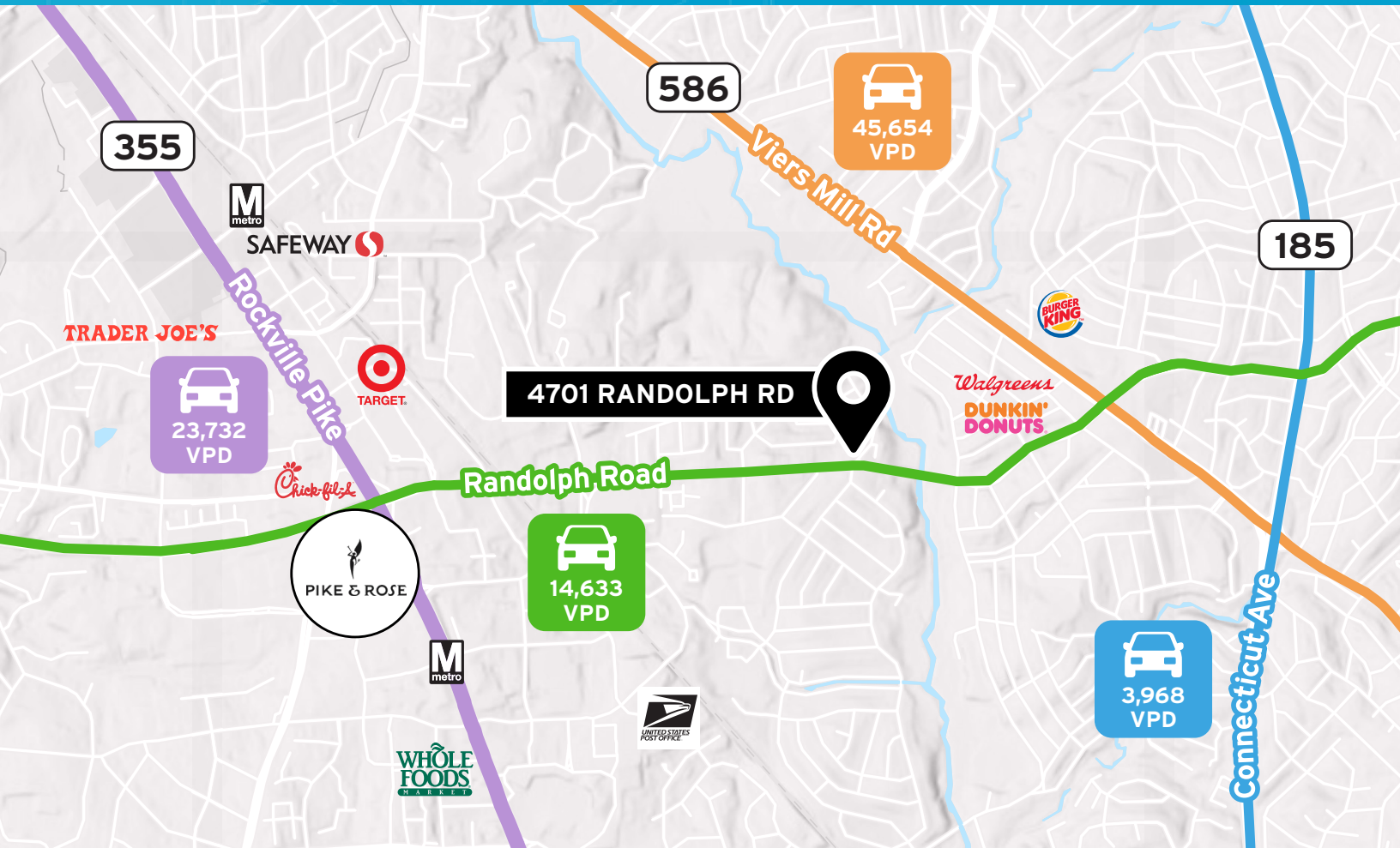


## Suite 209B - Medical Buildout

955 SF



# AERIAL



## EASY ACCESS

**355**

1.5 miles from  
Route 355



5 miles from  
I-270



2 miles from White Flint  
Metro Station (Red Line)

**586**

1 mile from Route 586  
(Viers Mill Road)

## REGIONAL ACCESS

0.5 miles from



5.5 miles from



**SUBURBAN HOSPITAL**  
JOHNS HOPKINS MEDICINE

**Nathan Crowe** - [ncrowe@scheerpartners.com](mailto:ncrowe@scheerpartners.com) - 301.337.4730

**Katie Datin** - [kdatin@scheerpartners.com](mailto:kdatin@scheerpartners.com) - 301.337.4707

15245 Shady Grove Rd, Suite 210 North, Rockville, MD 20850

**301.337.4700**

[www.scheerpartners.com](http://www.scheerpartners.com)

**Scheer Partners**  
A Reputation for Results