

MAP OF A SURVEY

LOT NO 44 1]

EDGE LAND FARMS SUBDIVISION

TOWN OF BRIGHTON

MONROE COUNTY
NEW YORK

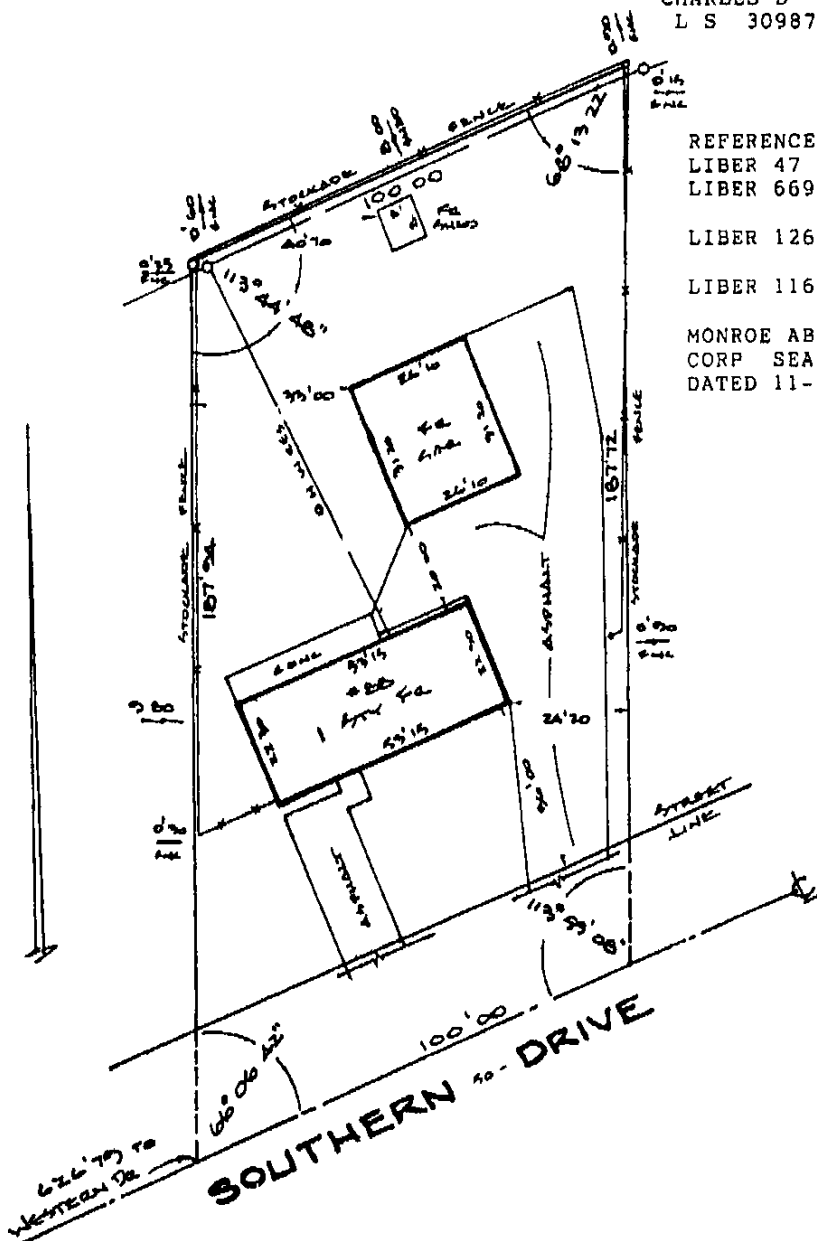
SCALE
1" = 30'

DATE
12-13-94

I, CHARLES D SMITH, CERTIFY TO HARRIS & CHESWORTH, CITICORP MORTGAGE, INC, ITS SUCCESSORS AND/OR ASSIGNS, MONROE TITLE INSURANCE CO, ROBERT DAVIS, RUSSELL C. MARRON, JR, ESQ, TRAYNOR STEHAN AND MARKS, ATTYS, THAT THIS MAP WAS PREPARED FROM NOTES OF AN INSTRUMENT/SURVEY COMPLETED ON 12-11-94

Charles D Smith

CHARLES D SMITH,
L S 30987



REFERENCES:

LIBER 47 OF MAPS, PAGE 2

LIBER 6691 OF DEEDS,
PAGE 313

LIBER 1262 OF DEEDS,
PAGE 208

LIBER 1165 OF DEEDS,
PAGE 245

MONROE ABSTRACT & TITLE
CORP SEARCH NO 112798,
DATED 11-25-94