

LEASE

OFFICE IN BOYETTE EXECUTIVE PARK

11904 Boyette Road Riverview, FL 33578



LEASE RATE

\$35.29 SF/year

Mousa Wakileh
(941) 960-9336

Stacy Rosenberg
(727) 488-4814

©2023 Coldwell Banker. All Rights Reserved. Coldwell Banker Commercial® and the Coldwell Banker Commercial logos are trademarks of Coldwell Banker Real Estate LLC. The Coldwell Banker® System is comprised of company owned offices which are owned by a subsidiary of Anywhere Advisors LLC and franchised offices which are independently owned and operated. The Coldwell Banker System fully supports the principles of the Equal Opportunity Act.



COLDWELL BANKER
COMMERCIAL
REALTY

LEASE

OFFICE IN BOYETTE EXECUTIVE PARK

11904 Boyette Road Riverview, FL 33578



OFFERING SUMMARY

Lease Rate:	\$35.29 SF / month (MG)
	\$5,000 / month
Number of Units:	1
Available SF:	1,786 SF
Building Size:	1,786 SF

DEMOGRAPHICS

	0.3 MILES	0.5 MILES	1 MILE
Total Households	160	666	2,635
Total Population	452	1,900	7,510
Average HH Income	\$140,820	\$139,668	\$133,453

Mousa Wakileh
(941) 960-9336

Stacy Rosenberg
(727) 488-4814



COLDWELL BANKER
COMMERCIAL
REALTY

LEASE

OFFICE IN BOYETTE EXECUTIVE PARK

11904 Boyette Road Riverview, FL 33578



PROPERTY DESCRIPTION

Price improvement! Prime office for lease in the well-maintained and professionally managed Boyette Executive Park. There are 12 buildings in total occupied by medical, dental and professional service businesses. The park is well maintained and a welcoming environment for clients. Tiled roof and high-end finishes. Ample parking with overflow available. Located on Boyette Road which provides direct access to I-75 and US 301. The property's state-of-the-art amenities, including high-speed internet and advanced security systems, ensure a seamless and secure work environment. Tenants will appreciate the professional atmosphere and the potential for customized signage opportunities. Elevate your business presence and productivity in this prime location, where every detail is tailored to enhance the tenant experience.

LOCATION DESCRIPTION

Discover the vibrant business environment surrounding Riverview, FL where convenience and opportunity converge. This bustling community offers an array of dining options such as The Alley at Southshore and The Barn at Winthrop, perfect for networking or client meetings. Retail therapy is within reach at nearby shopping centers such as Winthrop Town Centre and Shoppes at Southbay. Embrace the natural beauty of the area with a visit to the Alafia River State Park or the Campbell Park and Nature Center. With easy access to major roadways, the location provides a seamless commute for tenants. Welcome to a dynamic area primed for success.

Mousa Wakileh
(941) 960-9336

Stacy Rosenberg
(727) 488-4814



COLDWELL BANKER
COMMERCIAL
REALTY

LEASE

OFFICE IN BOYETTE EXECUTIVE PARK

11904 Boyette Road Riverview, FL 33578



PROPERTY HIGHLIGHTS

- Located in a well-maintained and established medical/professional office park in Riverview, FL
- Modern design and customizable office spaces
- Ample parking for tenants and clients with overflow
- High-speed internet and advanced security systems
- Professional atmosphere and customization signage opportunities
- Strategic location with easy access to major roadways. Boyette Road provides direct access to I-75 and US 301
- State-of-the-art amenities for enhanced tenant experience
- Not far from the newly opened Advent Hospital.

Mousa Wakileh
(941) 960-9336

Stacy Rosenberg
(727) 488-4814

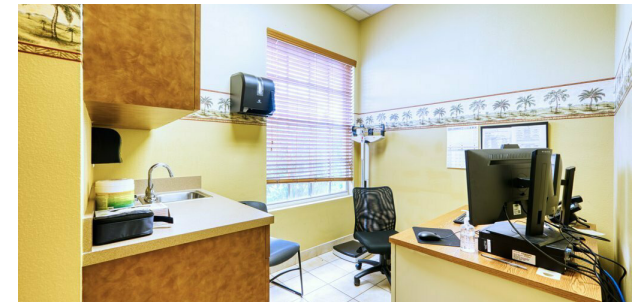
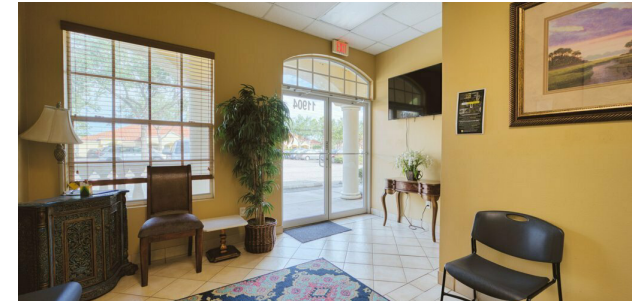


COLDWELL BANKER
COMMERCIAL
REALTY

LEASE

OFFICE IN BOYETTE EXECUTIVE PARK

11904 Boyette Road Riverview, FL 33578



Mousa Wakileh
(941) 960-9336

Stacy Rosenberg
(727) 488-4814

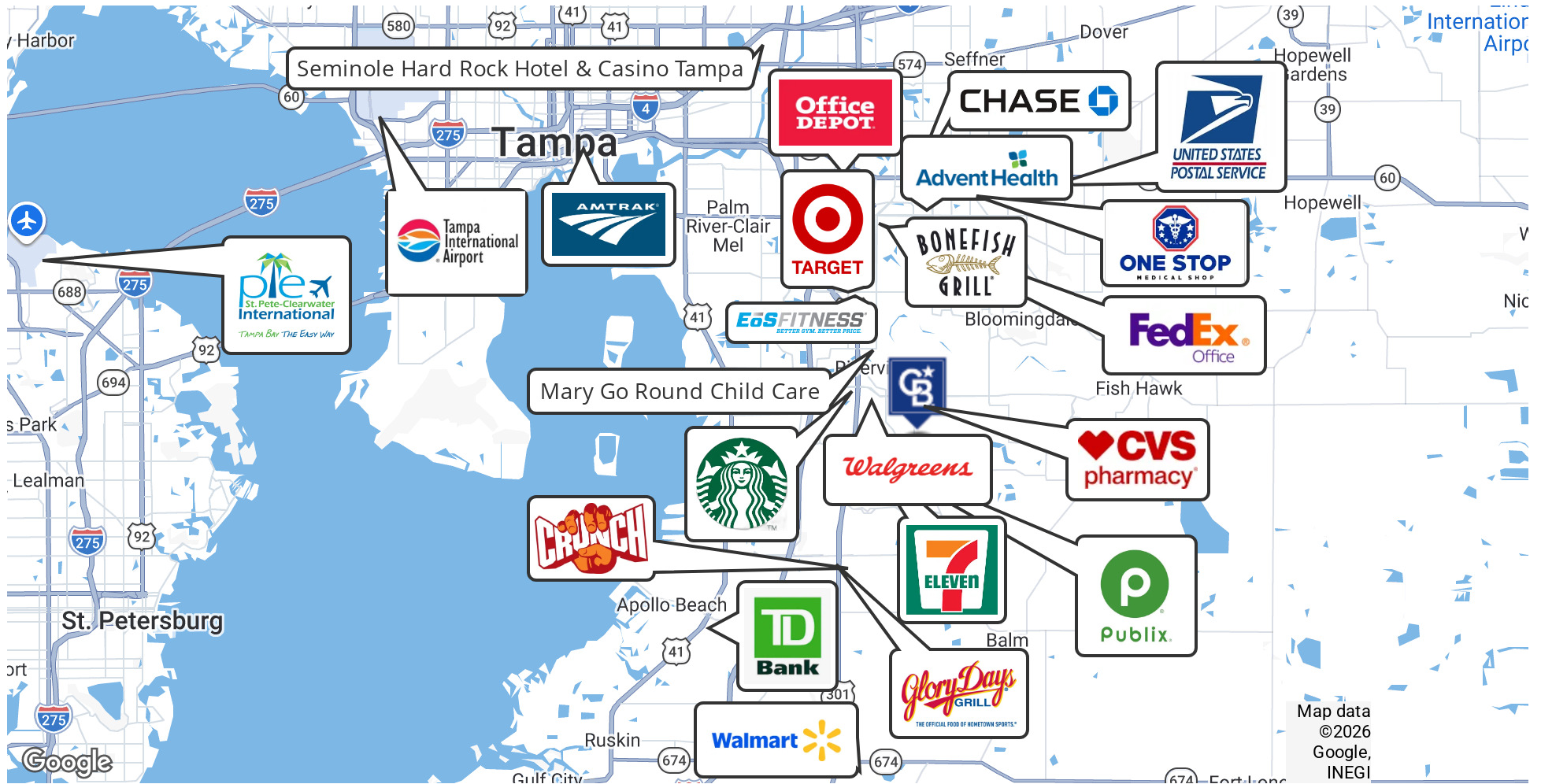


COLDWELL BANKER
COMMERCIAL
REALTY

LEASE

OFFICE IN BOYETTE EXECUTIVE PARK

11904 Boyette Road Riverview, FL 33578



Mousa Wakileh
(941) 960-9336

Stacy Rosenberg
(727) 488-4814



COLDWELL BANKER
COMMERCIAL
REALTY

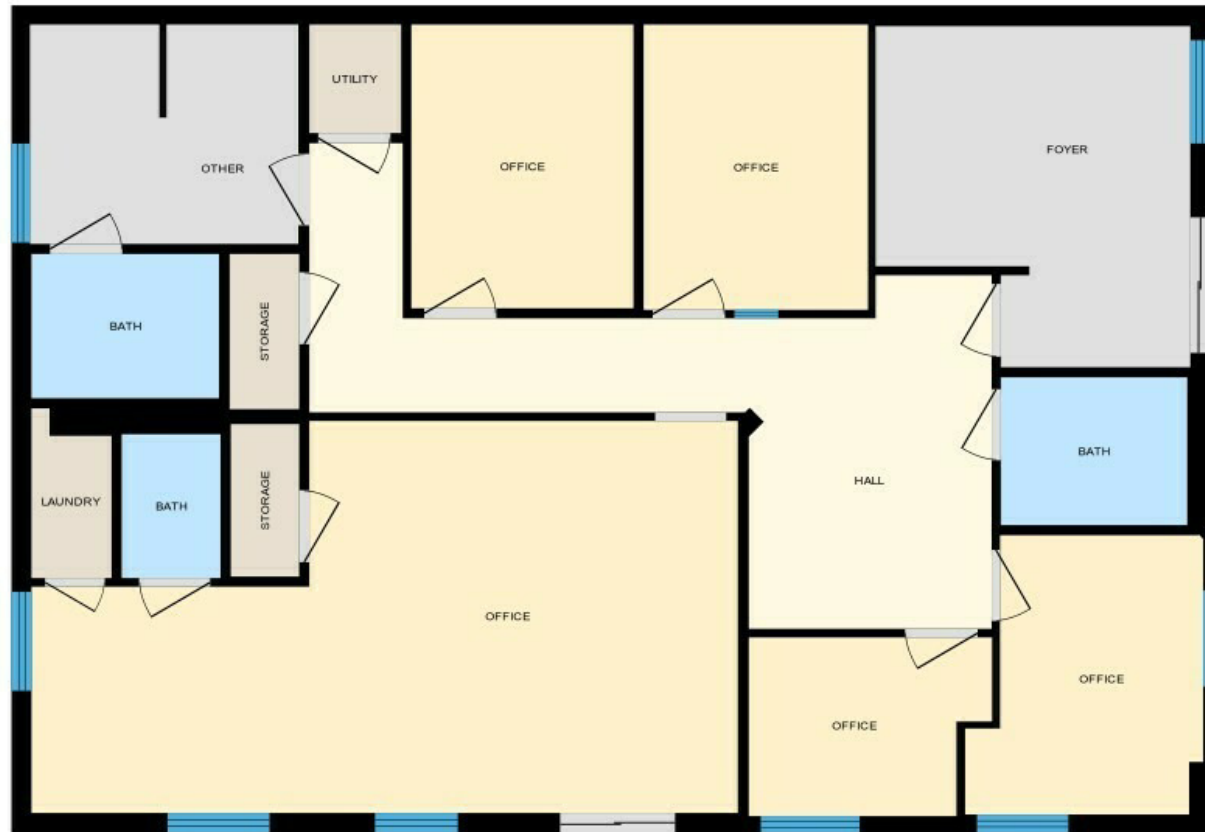
LEASE

OFFICE IN BOYETTE EXECUTIVE PARK

11904 Boyette Road Riverview, FL 33578

11904 Boyette Rd, Riverview, FL

Main Floor



Mousa Wakileh
(941) 960-9336

Stacy Rosenberg
(727) 488-4814



COLDWELL BANKER
COMMERCIAL
REALTY

LEASE

OFFICE IN BOYETTE EXECUTIVE PARK

11904 Boyette Road Riverview, FL 33578



MOUSA WAKILEH

Commercial Real Estate Advisor, Certified International Property Specialist

mousa.wakileh@cbrealty.com

Direct: (941) 960-9336

PROFESSIONAL BACKGROUND

Commercial Real Estate Professional specializing in Investment properties in Southwest Florida.

My background is in engineering and management which I have done on three continents. With this experience, I was able to gain knowledge to assist key decision makers at both large and small private firms in assessing their long-term strategies in various Acquisitions, Dispositions and Development Opportunities.

Affiliating with Coldwell Banker Commercial has provided me with great research and marketing tools to assist my customers both globally and locally.

I am active with the Board of Directors at Florida Realtors, RASM Global Business Council, CREW Tampa Bay and a Certified International Property Specialist.

Please contact if you are looking for creative solutions and guidance in Commercial real estate.

Coldwell Banker Commercial Realty

11215 E State Road 70 Ste 105
Lakewood Ranch, FL 34202
941.739.6777

Mousa Wakileh
(941) 960-9336

Stacy Rosenberg
(727) 488-4814



COLDWELL BANKER
COMMERCIAL
REALTY

LEASE

OFFICE IN BOYETTE EXECUTIVE PARK

11904 Boyette Road Riverview, FL 33578



STACY ROSENBERG

Commercial Real Estate Specialist

stacy.rosenberg@cbrealty.com

Direct: (727) 488-4814

PROFESSIONAL BACKGROUND

Stacy Rosenberg has been in the commercial real estate industry for the past seven years. She has extensive experience in sales and leasing of office, retail, industrial, and land sectors of the Bradenton/ Sarasota markets. Stacy specializes in retail and office sales and leasing in the Greater Tampa Bay area. Her previous career was in health care fundraising leaving her with a passion for doing business in the medical community.

Stacy is a native to the West Coast of Florida and grew up in St. Petersburg. She graduated from the University of South Florida in Tampa and has been living in Lakewood Ranch with her family for the past sixteen years. Stacy volunteers for not-for-profit organizations within the community, is a PTO member of several Manatee County schools, spends a lot of time at youth sporting events with her children, and is a member of Temple Emanuel. She is a 2022 graduate of Leadership Manatee through the Manatee County Chamber of Commerce. She also serves on the Economic Impact Committee through the Lakewood Ranch Business Alliance.

Coldwell Banker Commercial Realty

11215 E State Road 70 Ste 105
Lakewood Ranch, FL 34202
941.739.6777

Mousa Wakileh

(941) 960-9336

Stacy Rosenberg

(727) 488-4814



COLDWELL BANKER
COMMERCIAL
REALTY