

VICTORIA PARK VILLAGE CENTER - PHASE 1

1431 Orange Camp Rd | Deland, FL 32724

Office For Lease



LQ Commercial
REAL ESTATE SERVICES

LQCRE.COM



\$26.00
PSF

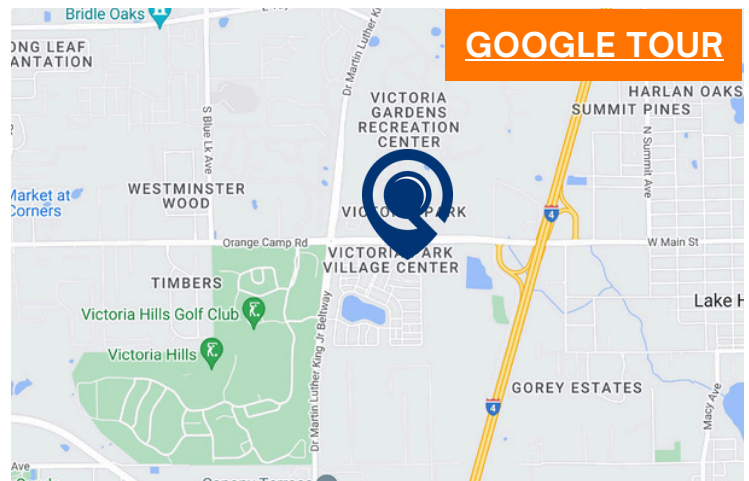


600 - 2,400
SF



25,000
GLA

- Built out office space available - 600 - 2,400 SF.
 - Unit # 109 B - 600 SF
 - Unit # 110 - 1,200 SF
 - Unit # 114 - 1,200 SF
 - Unit # 116/117 - 2,400 SF
- Join AdventHealth, Woof Gang Bakery, PNC Bank, and more.
- Serves the Victoria Park neighborhood in Deland, FL.
- High average household income of \$124,007 in a 1-mile radius.
- Less than 1 mile from I-4.



[LQCRE.COM/VICTORIA-PARK-PHASE-ONE](https://lqcre.com/victoria-park-phase-one)



5-MILE POPULATION

96,314



5-MILE INCOME

\$94,180



5-MILE EMPLOYEES

26,757



500 Winderley Place #104
Maitland, FL 32751

[LQCRE.COM](https://lqcre.com)

Julia Sosa
Founding Principal

D: 407.775.4358

C: 407.257.8246

jsosa@lqcre.com

Eva Grace Royal
Principal, Senior Associate

D: 407.705.2217

C: 407.421.3532

eroyal@lqcre.com

Information obtained from owner(s) or sources deemed reliable. We have no reason to doubt its accuracy, but cannot guarantee it. Property is subject to change or withdraw without notice.

VICTORIA PARK VILLAGE CENTER - PHASE 1

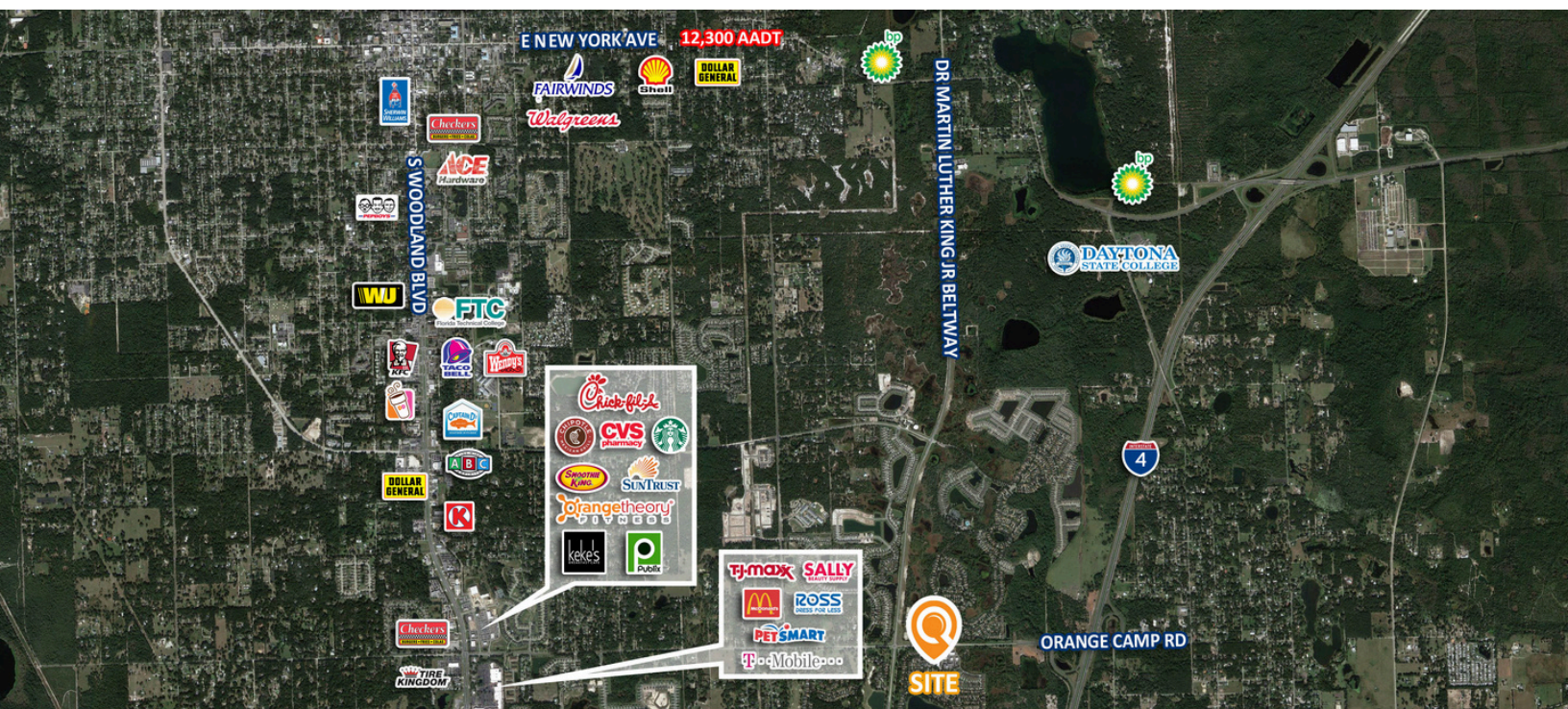
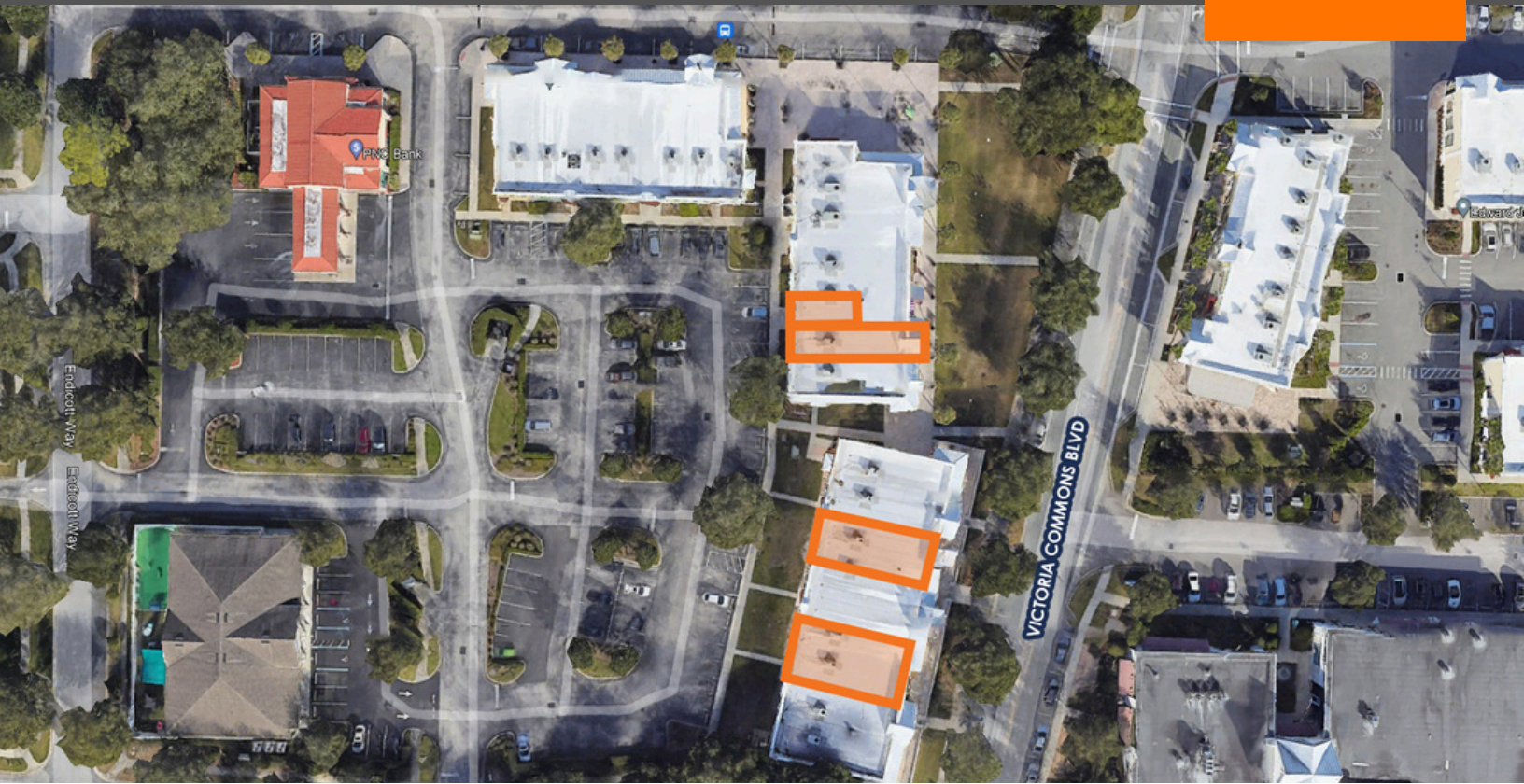
1431 Orange Camp Rd | Deland, FL 32724

Office For Lease



LQ Commercial
REAL ESTATE SERVICES

LQCRE.COM



500 Winderley Place #104
Maitland, FL 32751

LQCRE.COM

Julia Sosa
Founding Principal

D: 407.775.4358

C: 407.257.8246

jsosa@lqcre.com

Eva Grace Royal
Principal, Senior Associate

D: 407.705.2217

C: 407.421.3532

eroyal@lqcre.com

Information obtained from owner(s) or sources deemed reliable. We have no reason to doubt its accuracy, but cannot guarantee it. Property is subject to change or withdraw without notice.

VICTORIA PARK VILLAGE CENTER - PHASE 1

1431 Orange Camp Rd | Deland, FL 32724

Office For Lease



LQ Commercial
REAL ESTATE SERVICES

LQCRE.COM

101	102	103	104	105	106
ANIMAL CLINIC	ANIMAL CLINIC	WOOF GANG BAKERY	NAIL SALON	CLEANERS	VILLAGE CAFÉ

107	MURPH'S PATIO BAR & GRILL	
108	MURPH'S PATIO BAR & GRILL	
109	AVAILABLE Unit #109-B 600 SF	SIMPLY SWEET
110	AVAILABLE Unit #110 1,200 SF	
111	STYLEWORKS HAIR SALON	

112/113	ATLANTIC EAR NOSE & THROAT	
114	AVAILABLE Unit #114 1,200 SF	
115	FLORIDA SPINE SURGERY	
116/117	AVAILABLE Unit #116/117 2,400 SF	
118/119	ADVENT HOSPITAL	



Available



500 Winderley Place #104
Maitland, FL 32751

LQCRE.COM

Julia Sosa
Founding Principal

D: 407.775.4358

C: 407.257.8246

jsosa@lqcre.com

Eva Grace Royal
Principal, Senior Associate

D: 407.705.2217

C: 407.421.3532

eroyal@lqcre.com