



FOR LEASE



\*Average Daily Traffic Volume | Traffic Counts and Average Monthly Visits are Provided by REGIS Online at SitesUSA.com ©2025  
Map data ©2025 Google Imagery ©2025, Airbus, CNES / Airbus, Maxar Technologies, Metro, Portland Oregon, Public Laboratory, State of Oregon, U.S. Geological Survey, USDA/FPAC/GEO

## SOUTH COAST PLAZA RETAIL

**Anchor Retail Space:** ± 20,846 SF | \$9 psf + NNN

**Drive Thru Pad:** ± 2,600 SF | \$24 psf + NNN

**16161-16261 US-101, Brookings, OR 97415**

- Grocery Anchored Shopping Center (McKay's Market)
- Co-Anchor Opportunity with Pylon Signage Available
- Drive Thru Pad Available for Lease, BTS or Ground Lease
- Along Highway 101 - ±16,000 Vehicles per day
- Ideally Situated to Service the Harbor / Brookings Community

**NICHOLAS G. DIAMOND**

Principal Broker | Licensed in OR & WA

503-222-2655 | ndiamond@capacitycommercial.com

**RILEY M. HENDERSON, MRED**

Senior Associate Broker | Licensed in OR & WA

503-975-9301 | riley@capacitycommercial.com

**MICHAEL HORTER**

Associate Broker | Licensed in OR

503-936-8332 | michaelhorter@capacitycommercial.com





## PROPERTY SUMMARY

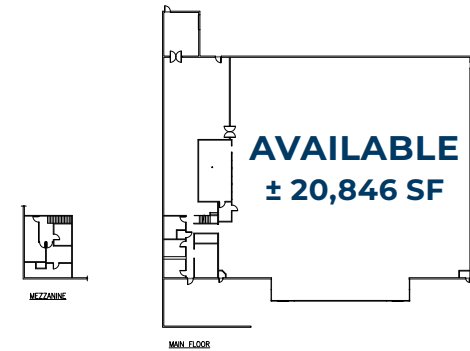


**FOR  
LEASE**



### PROPERTY DETAILS: Anchor Retail Space

Address	16161-16261 US-101, Brookings, OR 97415
Available Space	± 20,846 SF
Lease Rate	\$9 psf + NNN
Use Type	Retail, Service
Availability	Now
Space Condition	2nd-Generation Retail



### PROPERTY DETAILS: Drive Thru Pad

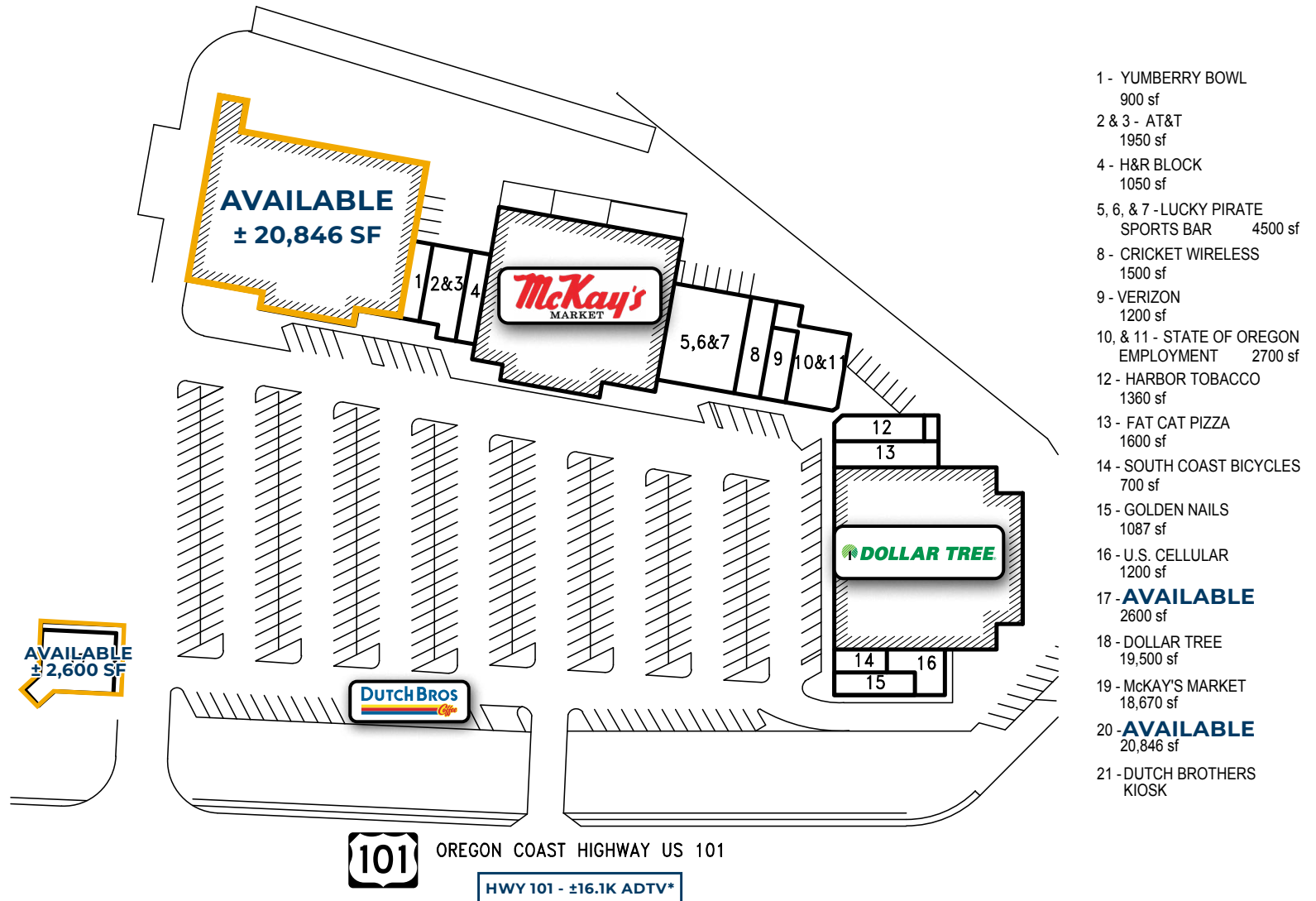
Address	16161-16261 US-101, Brookings, OR 97415
Available Space	± 2,600 SF
Lease Rate	\$24 psf + NNN
Use Type	Retail, Service, Office
Availability	Now
Space Condition	2nd-Generation Office (New BTS or Ground Lease Available)





# SITE PLAN

## SITE PLAN







# LOCAL AERIAL MAP

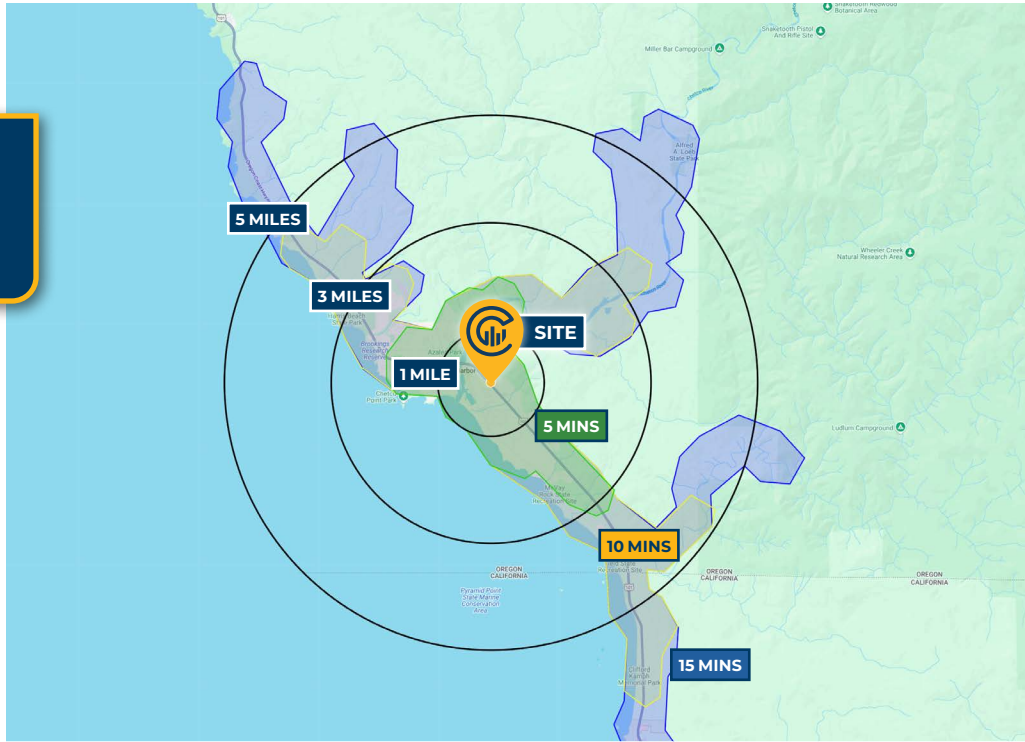


\*Average Daily Traffic Volume | Traffic Counts and \*Average Monthly Visits are Provided by REGIS Online at SitesUSA.com ©2025  
Map data ©2025 Google Imagery ©2025, Airbus, CNES / Airbus, Maxar Technologies, Metro, Portland Oregon, Public Laboratory, State of Oregon, U.S. Geological Survey, USDA/FPAC/GEO

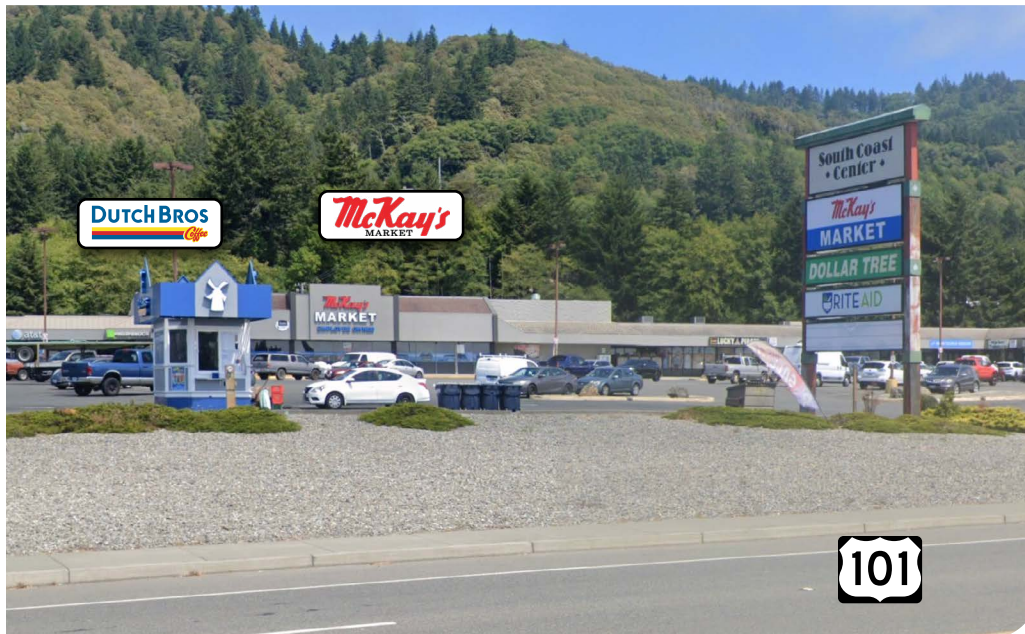




# DRIVE TIMES & DEMOGRAPHICS



Map data ©2025 Google Imagery ©2025, Airbus, CNES / Airbus, Maxar Technologies, Metro, Portland Oregon, Public Laboratory, State of Oregon, U.S. Geological Survey, USDA/FPAC/GEO



## AREA DEMOGRAPHICS

Population	1 Mile	3 Mile	5 Mile
2025 Estimated Population	3,655	10,740	12,684
2030 Projected Population	3,211	9,558	11,301
2020 Census Population	3,865	11,473	13,517
2010 Census Population	3,696	10,889	12,833
Projected Annual Growth 2025 to 2030	-2.4%	-2.2%	-2.2%
Historical Annual Growth 2010 to 2025	-	-	-
Households & Income			
2025 Estimated Households	1,831	5,067	5,976
2025 Est. Average HH Income	\$94,522	\$94,636	\$95,831
2025 Est. Median HH Income	\$60,778	\$68,532	\$70,285
2025 Est. Per Capita Income	\$47,445	\$44,798	\$45,279
Businesses			
2025 Est. Total Businesses	200	564	630
2025 Est. Total Employees	908	3,676	4,247

Demographic Information, Traffic Counts, and Merchant Locations are Provided by REGIS Online at SitesUSA.com ©2025, Sites USA, Chandler, Arizona, 480-491-1112 Demographic Source: Applied Geographic Solutions 05/2025, TIGER Geography - RS1

## NICHOLAS G. DIAMOND

Principal Broker | Licensed in OR & WA

503-222-2655 | ndiamond@capacitycommercial.com

## RILEY M. HENDERSON, MRED

Senior Associate Broker | Licensed in OR & WA

503-975-9301 | riley@capacitycommercial.com

## MICHAEL HORTER

Associate Broker | Licensed in OR

503-936-8332 | michaelhorter@capacitycommercial.com

## SOUTH COAST PLAZA RETAIL