

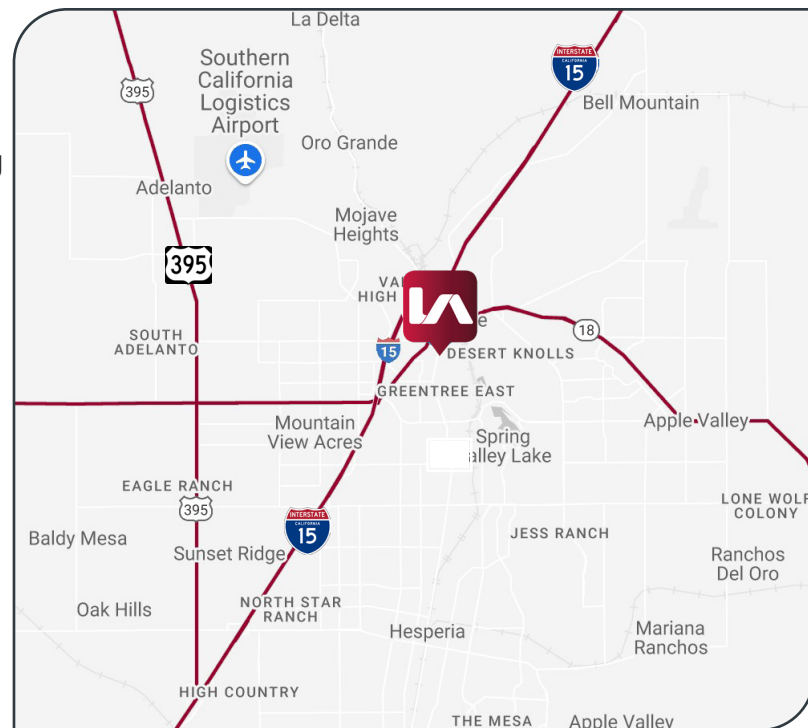
15445 8TH STREET  
VICTORVILLE, CA 92395

**FOR SALE**  
**±2,500 SF**



## Building Features

- Fully Improved ±2,500SF Office/Retail Building
- Functional Single Story Building
- Ample Parking
- Excellent Owner User Opportunity
- Close to Interstate 15 Freeway
- 10% Down Payment SBA Loan Possible
- Asking Price \$395,000



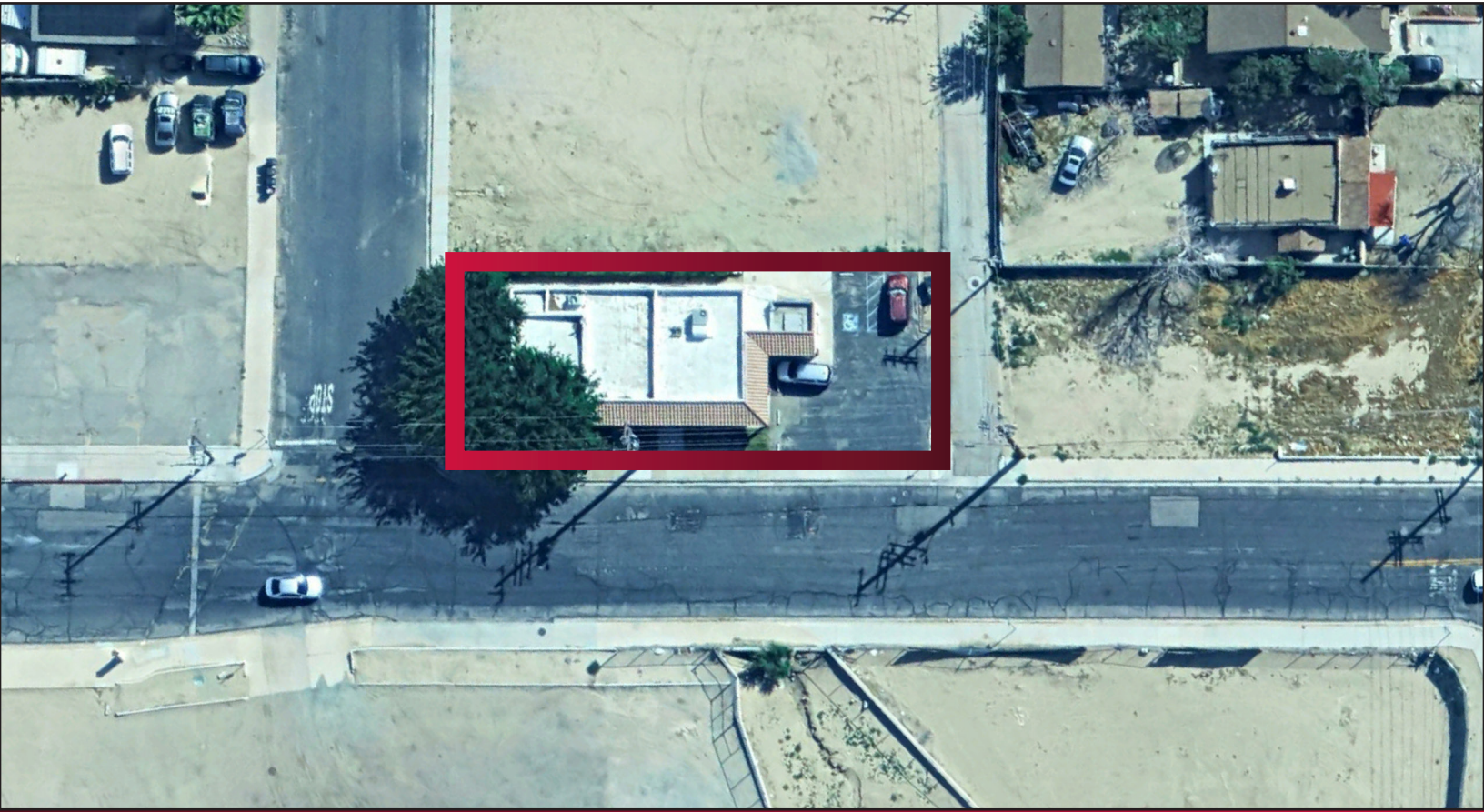
**GREG MARTIN**  
**SENIOR VICE PRESIDENT/ PRINCIPAL**  
gmartin@lee-assoc.com | D 909.373.2904  
Lic. # 01001749

**LEE & ASSOCIATES**  
COMMERCIAL REAL ESTATE SERVICES



15445 8TH STREET  
VICTORVILLE, CA 92395

**FOR SALE**  
±2,500 SF



**GREG MARTIN**  
**SENIOR VICE PRESIDENT/ PRINCIPAL**  
gmartin@lee-assoc.com | D 909.373.2904  
Lic. # 01001749

**LEE & ASSOCIATES**  
COMMERCIAL REAL ESTATE SERVICES

All information furnished regarding property for sale, rental or financing is from sources deemed reliable, but no warranty or representation is made to the accuracy thereof and same is submitted to errors, omissions, change of price, rental or other conditions prior to sale, lease or financing or withdrawal without notice. No liability of any kind is to be imposed on the broker herein.