

FOR LEASE



TRIANGLE MEDICAL CENTER

400 Ashville Avenue | Cary, NC 27518



CAPITAL
ASSOCIATES®

TRIANGLE MEDICAL CENTER

400 Ashville Avenue | Cary, NC 27518

PROPERTY TYPE	Medical Office
BUILDING SIZE	30,492 SF
TOTAL SPACE AVAILABLE	6,363 SF
SUITE 300	3,351 SF
SUITE 315	1,421 SF
SUITE 360	1,595 SF
LEASING RATE	\$34.50/SF
LEASE TYPE	Full Service
YEAR BUILT	1995
COUNTY	Wake
LOCATION	Cary, NC
FLOORS	3

BRET MULLER
919.523.4200
bmuller@capitalassociates.com

WES JOHNSON
919.422.4853
wjohnson@capitalassociates.com



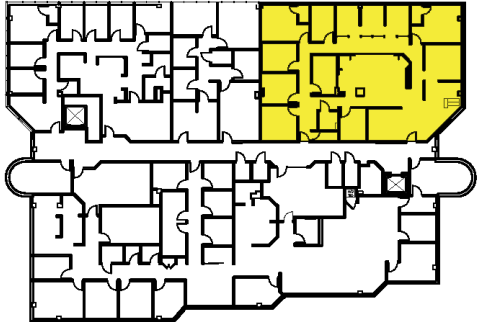
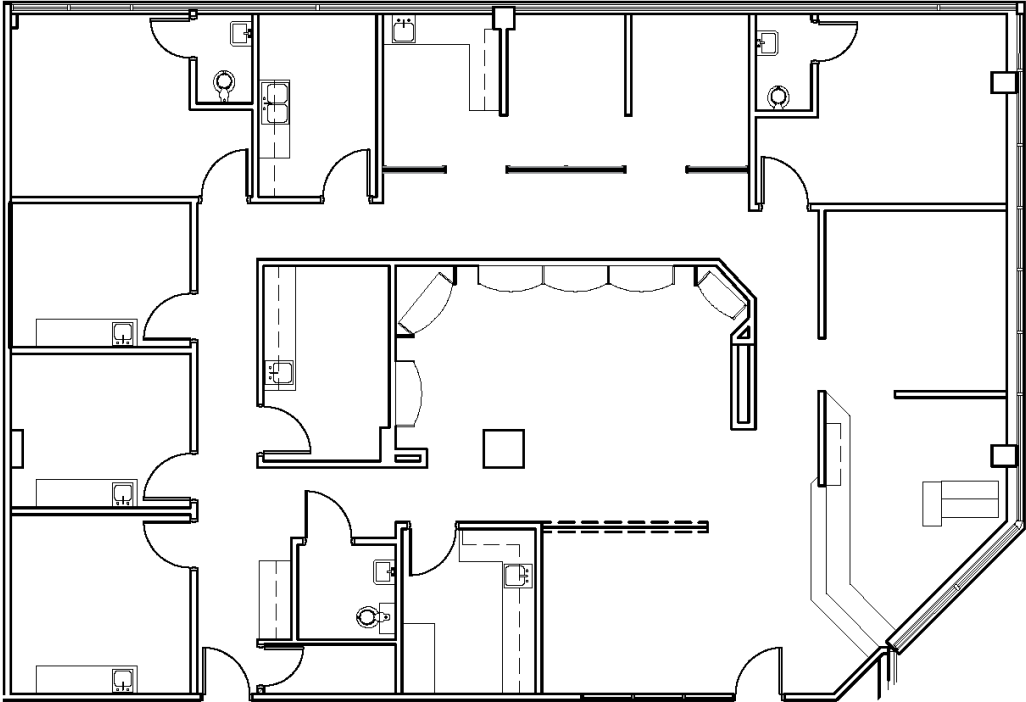
TRIANGLE MEDICAL CENTER

400 Ashville Avenue | Cary, NC 27518

AVAILABLE

Third Floor
Suite 300

3,351 SF



BRET MULLER
919.523.4200
bmuller@capitalassociates.com

WES JOHNSON
919.422.4853
wjohnson@capitalassociates.com



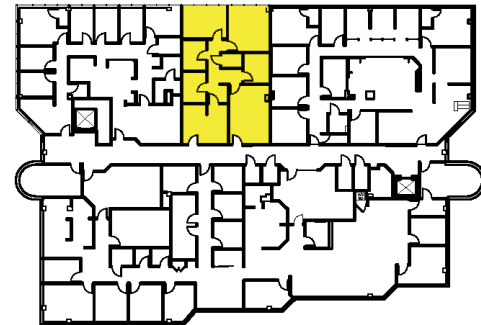
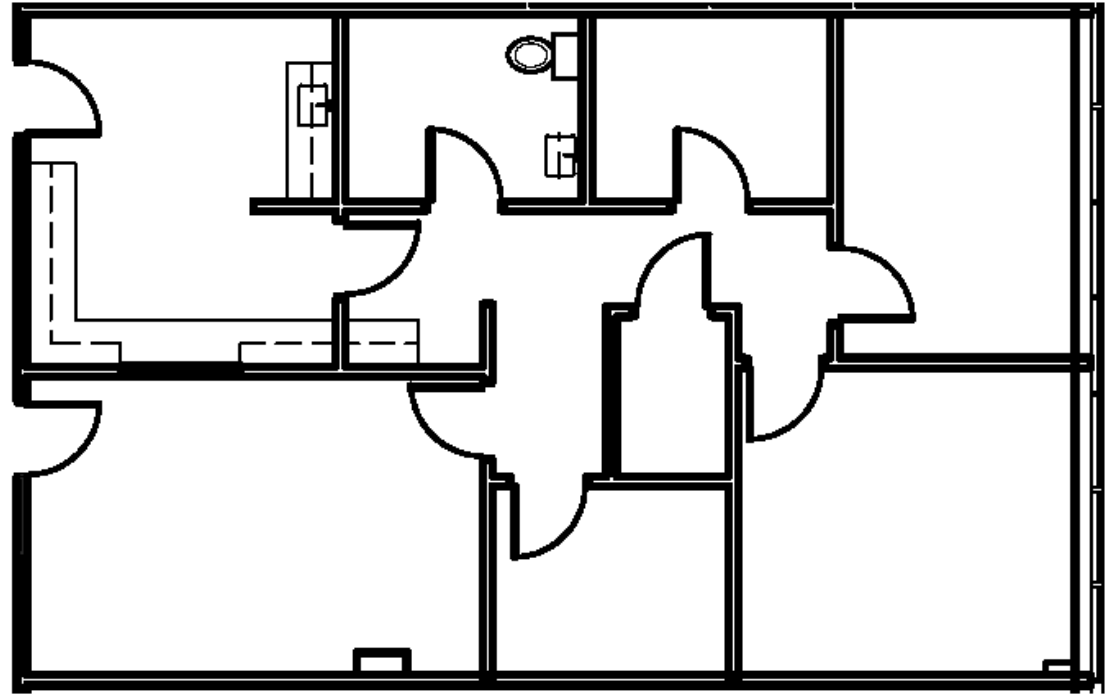
TRIANGLE MEDICAL CENTER

400 Ashville Avenue | Cary, NC 27518

AVAILABLE

Third Floor
Suite 315

1,421 SF



BRET MULLER

919.523.4200

bmuller@capitalassociates.com

WES JOHNSON

919.422.4853

wjohnson@capitalassociates.com



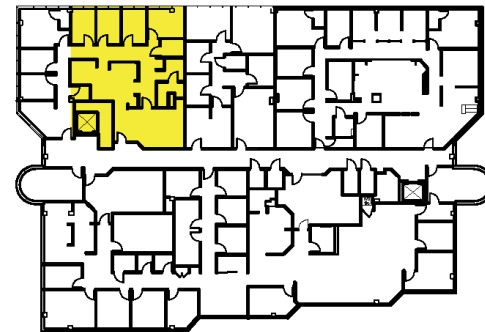
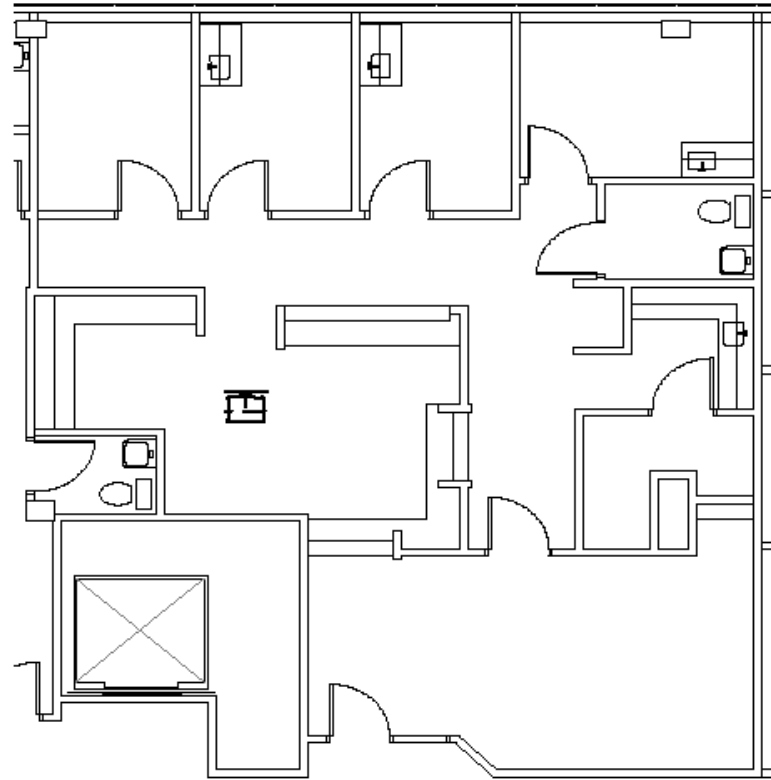
TRIANGLE MEDICAL CENTER

400 Ashville Avenue | Cary, NC 27518

AVAILABLE

Third Floor
Suite 360

1,595 SF



BRET MULLER

919.523.4200

bmuller@capitalassociates.com

WES JOHNSON

919.422.4853

wjohnson@capitalassociates.com



TRIANGLE MEDICAL CENTER

400 Ashville Avenue | Cary, NC 27518

PROPERTY HIGHLIGHTS

Triangle Medical Center is an iconic 30,492 SF three-story office building. Some of its highlights include:

- New flooring
- Ample parking (covered and surface options)
- Recently updated elevator
- Natural light
- Flexible suite options
- Countless surrounding amenities

LOCATION

The building is located amidst the thriving medical district of Cary. 400 Ashville Ave is less than half a mile from WakeMed Cary Hospital and less than a 5 minute drive to Waverly Place Shopping Center. With plenty of surrounding dining and retail options, the building is a very convenient spot for both patients and employees.



BRET MULLER
919.523.4200
bmuller@capitalassociates.com

WES JOHNSON
919.422.4853
wjohnson@capitalassociates.com

