

FOR LEASE: APPROXIMATELY 5,436 SF INDUSTRIAL SUITE

2151 ENTERPRISE STREET
ESCONDIDO, CA 92029

PC
PALOMAR
COMMERCIAL
BUSINESS REAL ESTATE SERVICES



PC
PALOMAR
COMMERCIAL

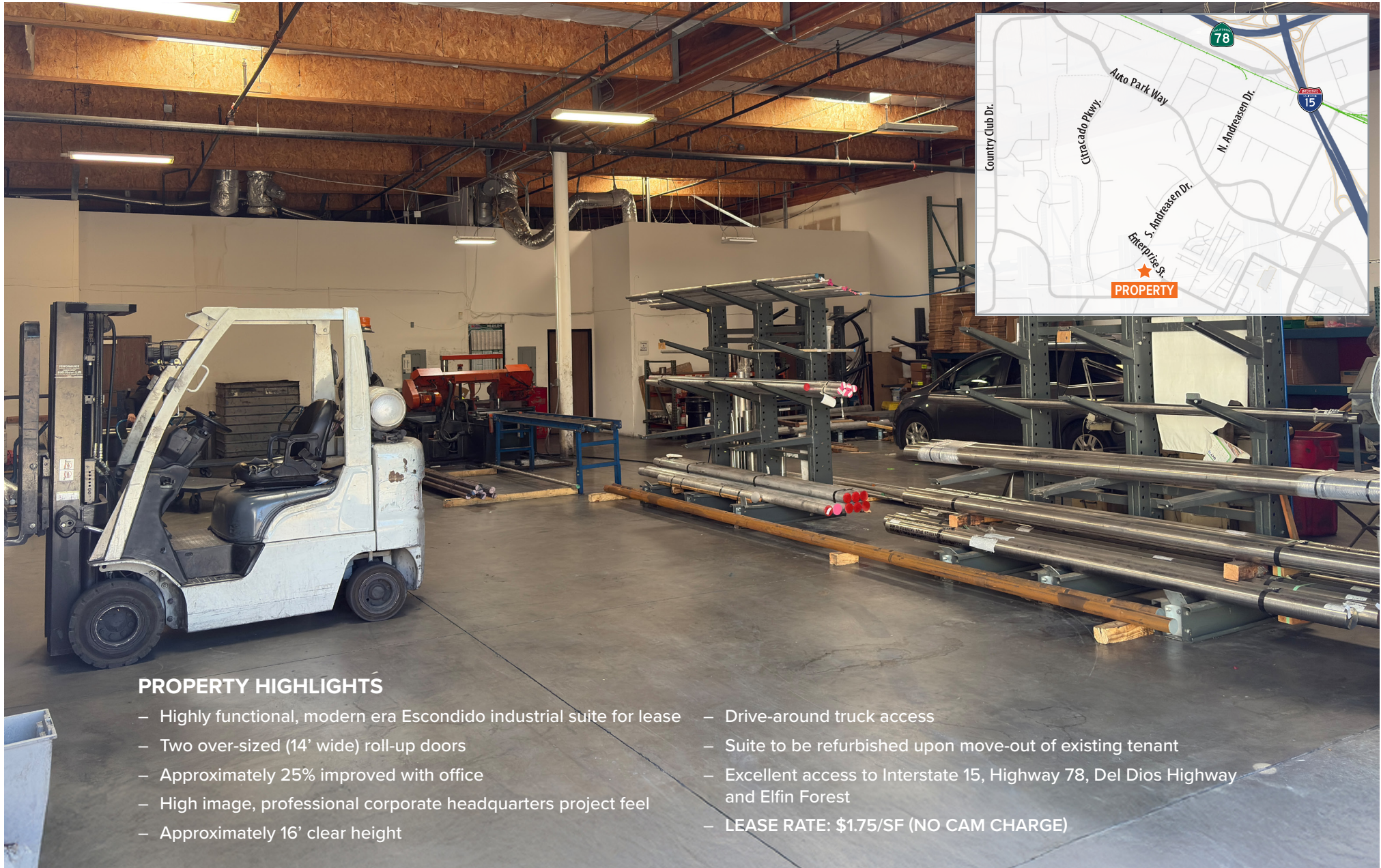
Justin Beattie
Palomar Commercial | Lic #01522337
📧 jbeattie@palomarcommercial.com
📞 760.918.2600

LEE & ASSOCIATES
COMMERCIAL REAL ESTATE SERVICES

Barry Hendler
Lee & Associates | Lic #01008239
📧 bhendler@lee-associates.com
📞 760.845.3854

Colliers
INTERNATIONAL

Mike Erwin
Colliers | Lic #01242826
📧 mike.erwin@colliers.com
📞 760.930.7971



PROPERTY HIGHLIGHTS

- Highly functional, modern era Escondido industrial suite for lease
- Two over-sized (14' wide) roll-up doors
- Approximately 25% improved with office
- High image, professional corporate headquarters project feel
- Approximately 16' clear height
- Drive-around truck access
- Suite to be refurbished upon move-out of existing tenant
- Excellent access to Interstate 15, Highway 78, Del Dios Highway and Elfin Forest
- LEASE RATE: \$1.75/SF (NO CAM CHARGE)



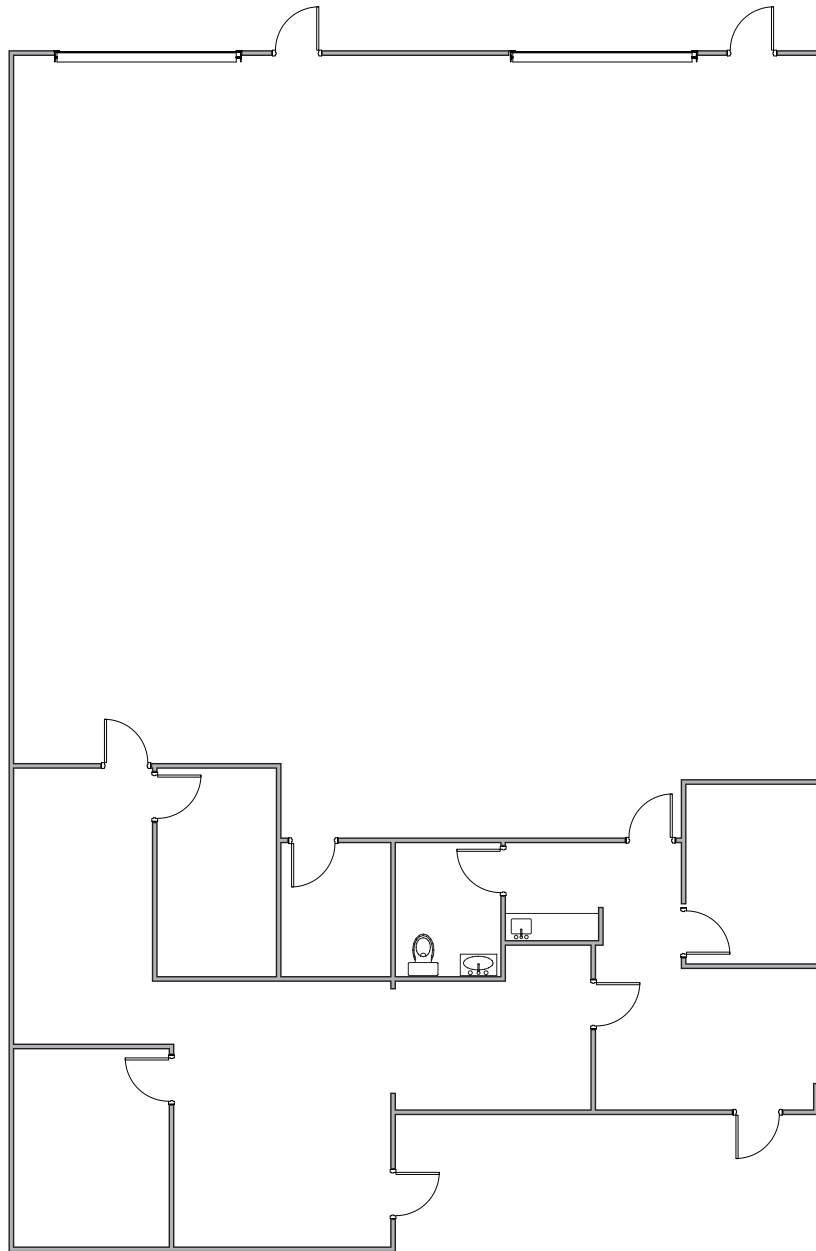
Justin Beattie
 Palomar Commercial | Lic #01522337
 📧 jbeattie@palomarcommercial.com
 ☎ 760.918.2600



Barry Hendler
 Lee & Associates | Lic #01008239
 📧 bhendler@lee-associates.com
 ☎ 760.845.3854



Mike Erwin
 Colliers | Lic #01242826
 📧 mike.erwin@colliers.com
 ☎ 760.930.7971



Justin Beattie
Palomar Commercial | Lic #01522337
📧 jbeattie@palomarcommercial.com
☎ 760.918.2600



Barry Hendler
Lee & Associates | Lic #01008239
📧 bhendler@lee-associates.com
☎ 760.845.3854



Mike Erwin
Colliers | Lic #01242826
📧 mike.erwin@colliers.com
☎ 760.930.7971