



# For Lease

**Doug Twyman, SIOR**  
Licensed Broker Salesperson  
Dir +1 732 807 0338  
Mob + 1 732 236 8899  
doug.twyman@colliers.com

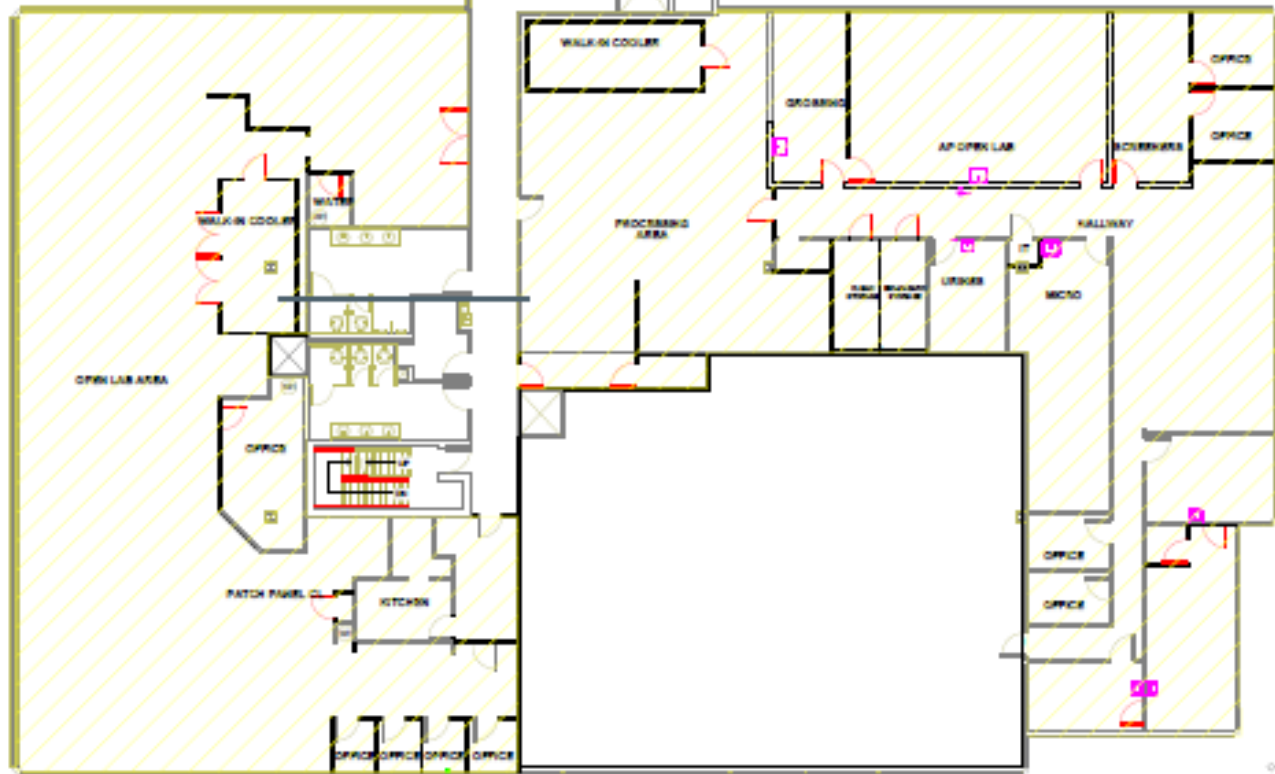
Colliers International NJ LLC  
10 Woodbridge Center Drive  
Suite 1010  
Woodbridge, NJ 07095  
+1 732 807 0400  
colliers.com

## 3000 Hadley Road South Plainfield, NJ

**±29,500 SF Divisible Office/Medical/Lab Available**

- Three-story, 48,939 SF office building on ±2.4 Acres
- Building and monument signage available
- Heavy power and flexible floorplates
- Zoning: M-2 Industrial Zone
- Permitted uses include, but are not limited to, professional office, scientific or research laboratories, light manufacturing, TV and radio broadcasting
- Parking: 4.00/1,000 SF
- Call for Pricing

Second Floor: 12,500 SF  
Divisible to 3,000 SF



**Doug Twyman, SIOR**

Licensed Broker Salesperson

Dir +1 732 807 0338

Mob + 1 732 236 8899

doug.twyman@colliers.com



Colliers International NJ LLC

10 Woodbridge Center Drive

Suite 1010

Woodbridge, NJ 07095

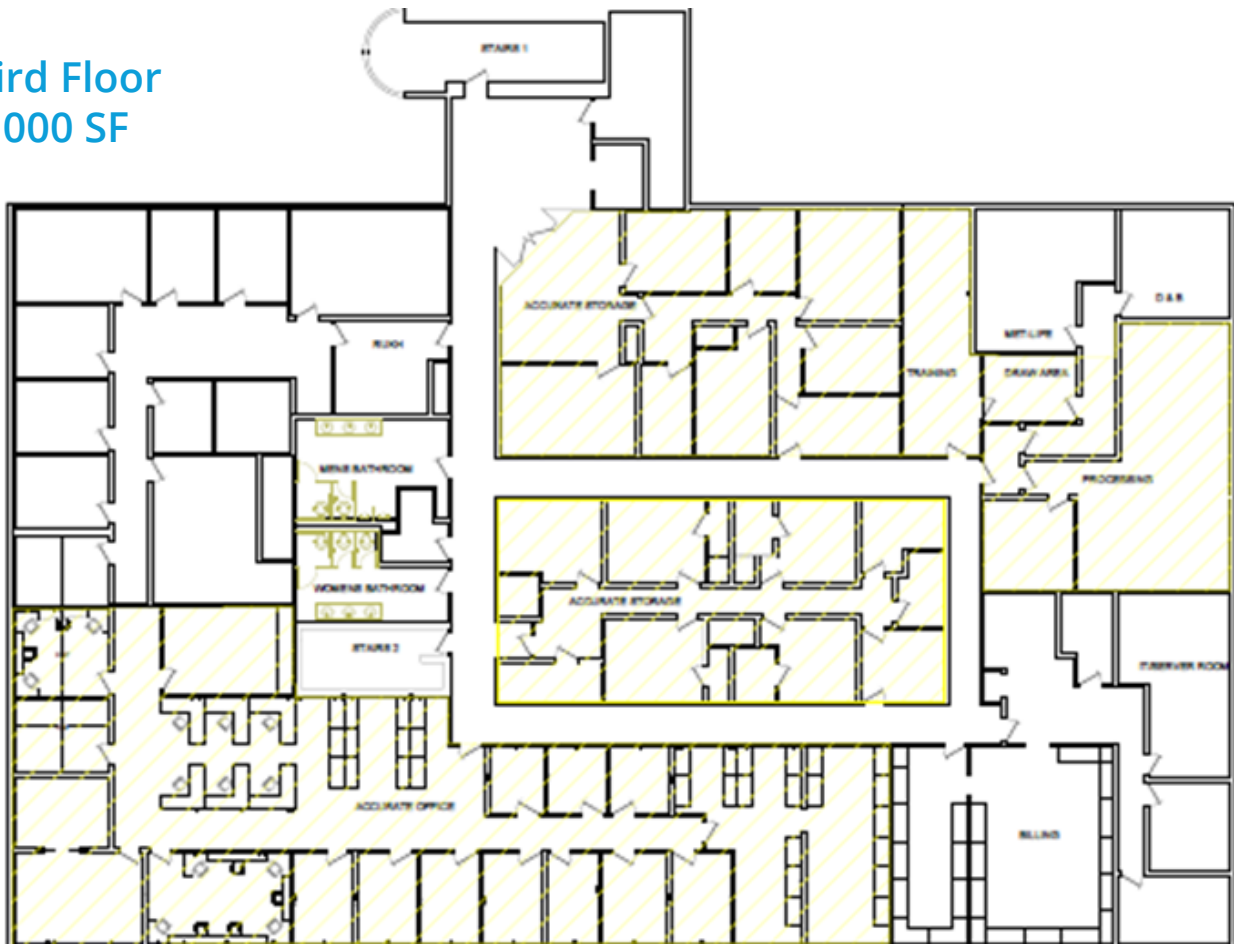
+1 732 807 0400

colliers.com



Accelerating success.

**Third Floor**  
**17,000 SF**



**Doug Twyman, SIOR**

Licensed Broker Salesperson

Dir +1 732 807 0338

Mob + 1 732 236 8899

doug.twyman@colliers.com



Colliers International NJ LLC

10 Woodbridge Center Drive

Suite 1010

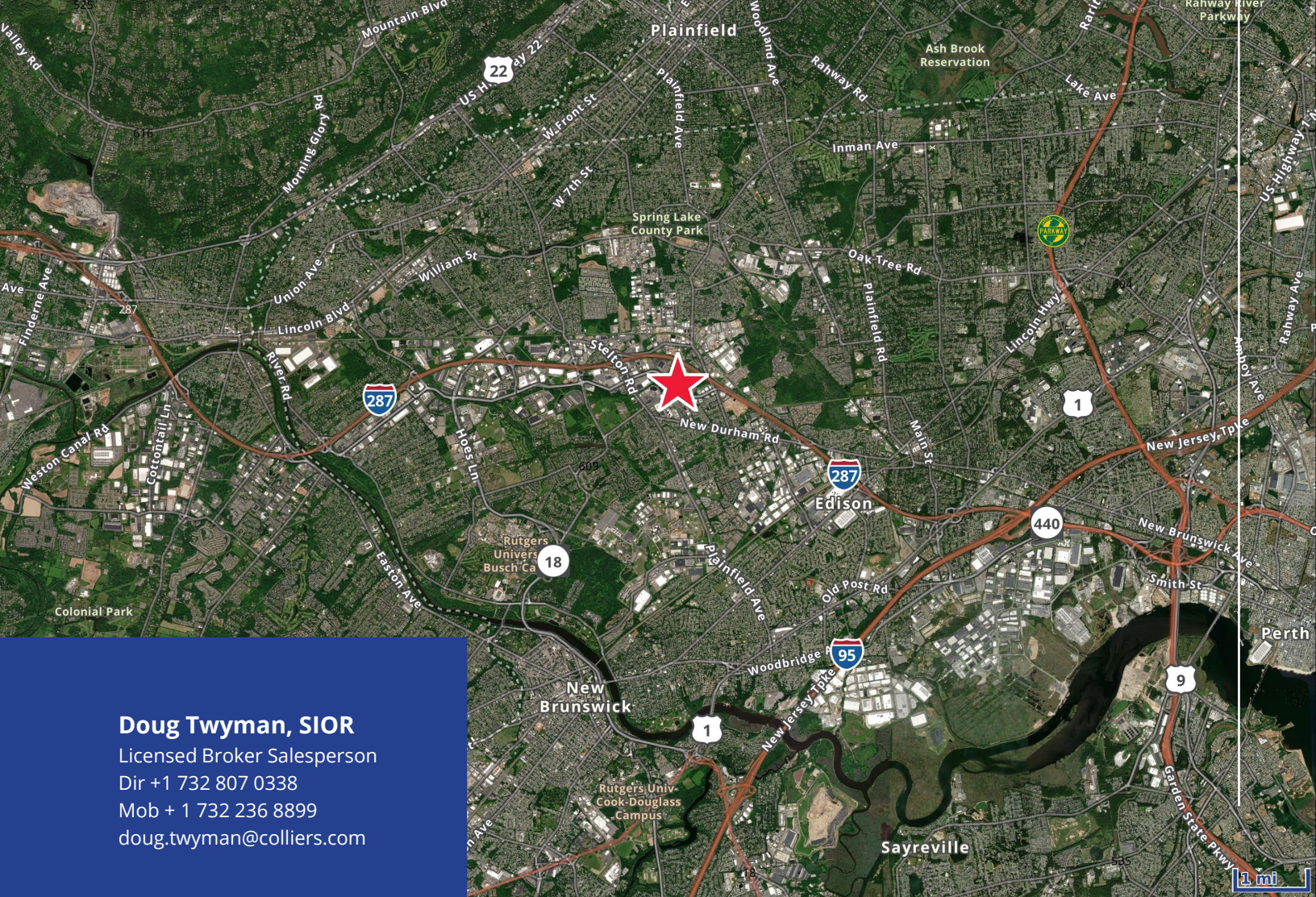
Woodbridge, NJ 07095

+1 732 807 0400

colliers.com



Accelerating success.



## Doug Twyman, SIOR

Licensed Broker Salesperson

Dir +1 732 807 0338

Mob + 1 732 236 8899

doug.twyman@colliers.com



Colliers International NJ LLC

10 Woodbridge Center Drive

Suite 1010

Woodbridge, NJ 07095

+1 732 807 0400

colliers.com

## Location

- Easy access to Routes 287 and 440
- Within minutes of I-95 and Garden State Parkway
- Proximate to Route 18

No representation is made as to the accuracy of the information furnished herein and same is submitted subject to errors, omissions, change of prices, rental, or other conditions, prior sale, lease, sublease, and/or withdrawal without notice. While every attempt is made to ensure accuracy, the floor plan(s) is for guidance only. The measurements, dimensions, specifications, and other data shown are approximate and may not be to scale. We assume no responsibility for the accuracy of the floor plan(s) or for any action taken in reliance thereon. The floor plan(s) do not create any representation, warranty or contract. All parties should consult a professional, such as an architect, to verify the information contained herein. The furnishing of this information shall not be deemed a hiring. A commission in accordance with our principal's schedule of rates and conditions will be paid to the procuring Broker who executes our or our principal's brokerage agreement, subject to a fully consummated transaction upon terms and conditions acceptable to our principal. Colliers International NJ, LLC