



Price Drop! Berkeley Sale: ±6,585-SF Warehouse with Level-in Roll-up + Office Entry on 4th Street at Harrison



1200 4th Street

Berkeley California 94710

\$1,600,000
[WAS \$1,750,000]

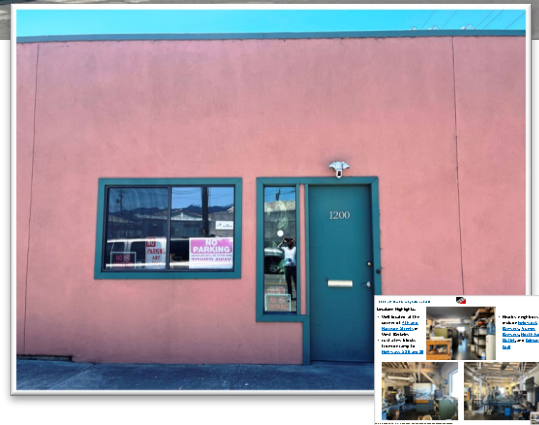
Represented by:

Colby Katz
510 450 1420
ckatz@mrecommercial.com
LIC# 01949015

Francis Griffin
510 450 1405
fgriffin@mrecommercial.com
LIC# 02016713

Property Highlights:

- Warehouse with level-in roll-up door
- Front offices with entrance off 4th Street
- Kitchen/breakroom
- Two off-street tandem parking spaces

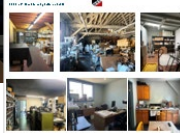


Location Highlights:

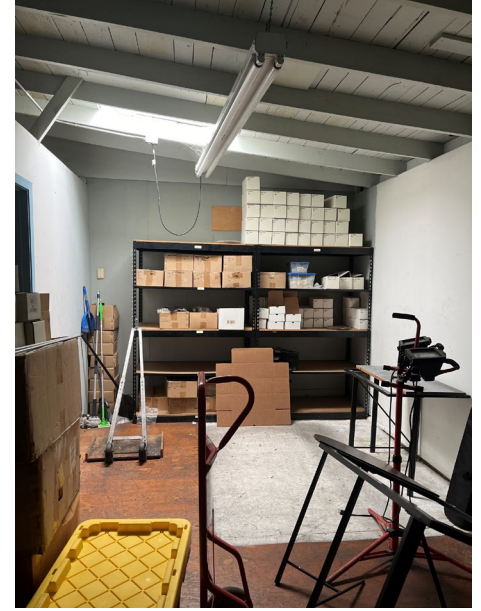
- Well located at the corner of [4th and Harrison Streets](#) in West Berkeley
- Just a few blocks from onramp to [Highways 580 and 80](#)



- Nearby neighbors include [Fieldwork Brewery](#), [Trumer Brewery](#), [North Face Outlet](#), and [Gilman Grill](#)



1200 4th Street Berkeley California 94710



All information herein is offered in good faith and deemed accurate, but not guaranteed.



