

# 2401 E. TONOPAH

2401 E. Tonopah Ave. | North Las Vegas, NV 89031

## PROPERTY DETAILS

- Assessor Parcel Numbers:  
13923803002  
13923811003
- Building Size: 26,545 SF
- Property Size: 2.91 Acres
- Parking: 186 spaces

### JUSTIN MICHAELS

Vice President | Lic.# S.0068221

📍 1129 S. Casino Center Blvd. | Las Vegas, NV 89104 📞 702.347.7777 🌐 [mfrenv.com](http://mfrenv.com)



Disclaimer: The information above has been obtained from sources believed reliable. While we do not doubt its accuracy, we have not verified it and make no guarantee, warranty or representation about it. It is your responsibility to independently confirm its accuracy and completeness. Any projections, opinions, assumptions or estimates used are for example only and do not represent the current or future performance of the property. The value of this transaction to you depends on tax and other factors which should be evaluated by your tax, financial and legal advisors. You and your advisors should conduct a careful, independent investigation of the property to determine for your satisfaction the suitability of the property for your needs. This information has been prepared exclusively for the clients of Michaels Follmer Real Estate (MFRE) and is confidential. It is the property of MFRE, and reproduction of any portion without the written consent of MFRE is strictly prohibited.





## 2401 E. Tonopah Ave. | North Las Vegas, NV 89031

- Sale Price: \$9,250,000
- The property has an existing Special Use Permit for a school for up to 240 students.
- Lease Rate: \$2.50 PSF NNN

### JUSTIN MICHAELS

Vice President | Lic.# S.0068221

📍 1129 S. Casino Center Blvd. | Las Vegas, NV 89104 📞 702.347.7777 🌐 [mfrenv.com](http://mfrenv.com)



Disclaimer: The information above has been obtained from sources believed reliable. While we do not doubt its accuracy, we have not verified it and make no guarantee, warranty or representation about it. It is your responsibility to independently confirm its accuracy and completeness. Any projections, opinions, assumptions or estimates used are for example only and do not represent the current or future performance of the property. The value of this transaction to you depends on tax and other factors which should be evaluated by your tax, financial and legal advisors. You and your advisors should conduct a careful, independent investigation of the property to determine for your satisfaction the suitability of the property for your needs. This information has been prepared exclusively for the clients of Michael's Follmer Real Estate (MFRE) and is confidential. It is the property of MFRE, and reproduction of any portion without the written consent of MFRE is strictly prohibited.





## JUSTIN MICHAELS

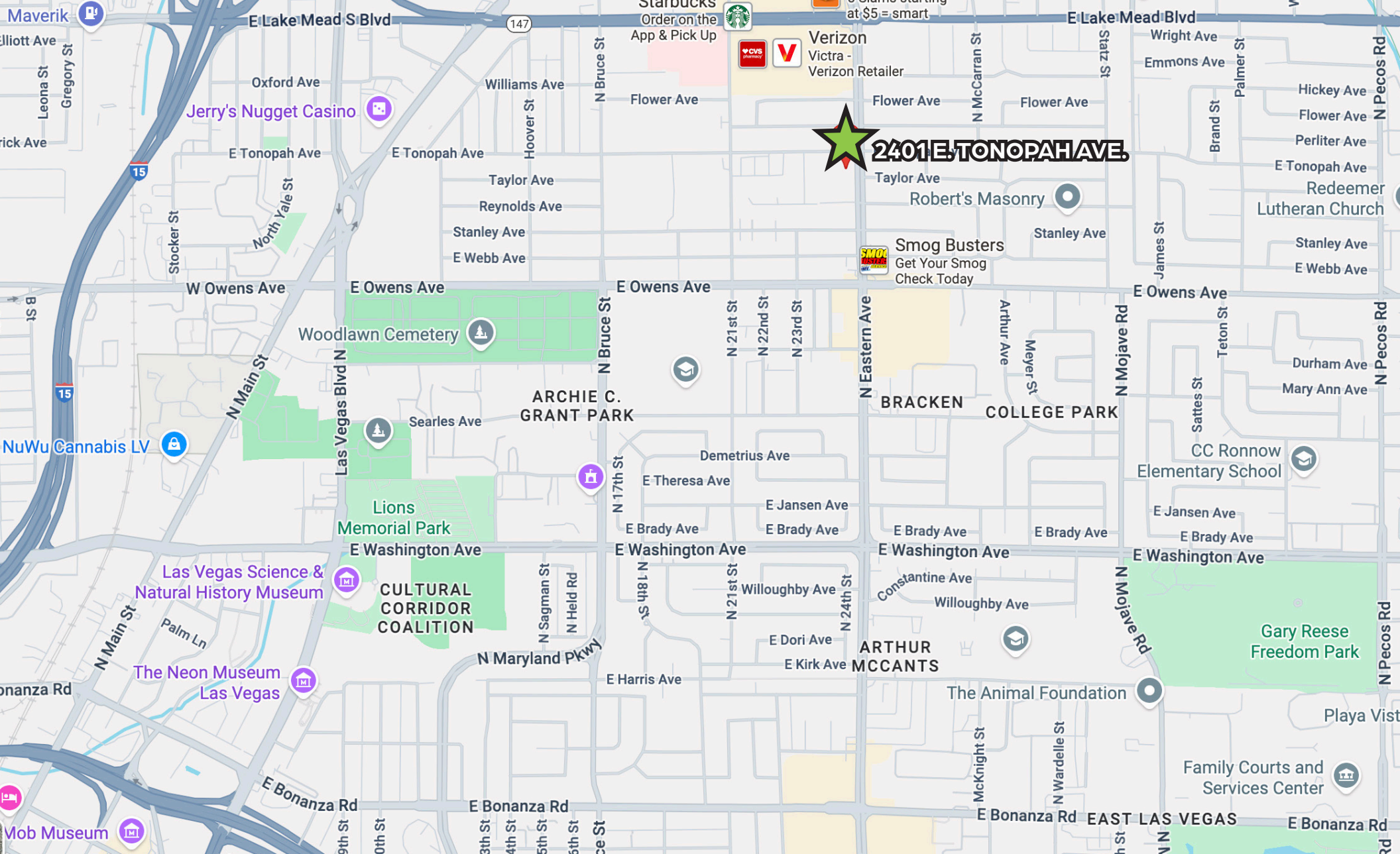
Vice President | Lic.# S.0068221

📍 1129 S. Casino Center Blvd. | Las Vegas, NV 89104 📞 702.347.7777 🌐 [mfrenv.com](http://mfrenv.com)



Disclaimer: The information above has been obtained from sources believed reliable. While we do not doubt its accuracy, we have not verified it and make no guarantee, warranty or representation about it. It is your responsibility to independently confirm its accuracy and completeness. Any projections, opinions, assumptions or estimates used are for example only and do not represent the current or future performance of the property. The value of this transaction to you depends on tax and other factors which should be evaluated by your tax, financial and legal advisors. You and your advisors should conduct a careful, independent investigation of the property to determine for your satisfaction the suitability of the property for your needs. This information has been prepared exclusively for the clients of Michaels Follmer Real Estate (MFRE) and is confidential. It is the property of MFRE, and reproduction of any portion without the written consent of MFRE is strictly prohibited.





## JUSTIN MICHAELS

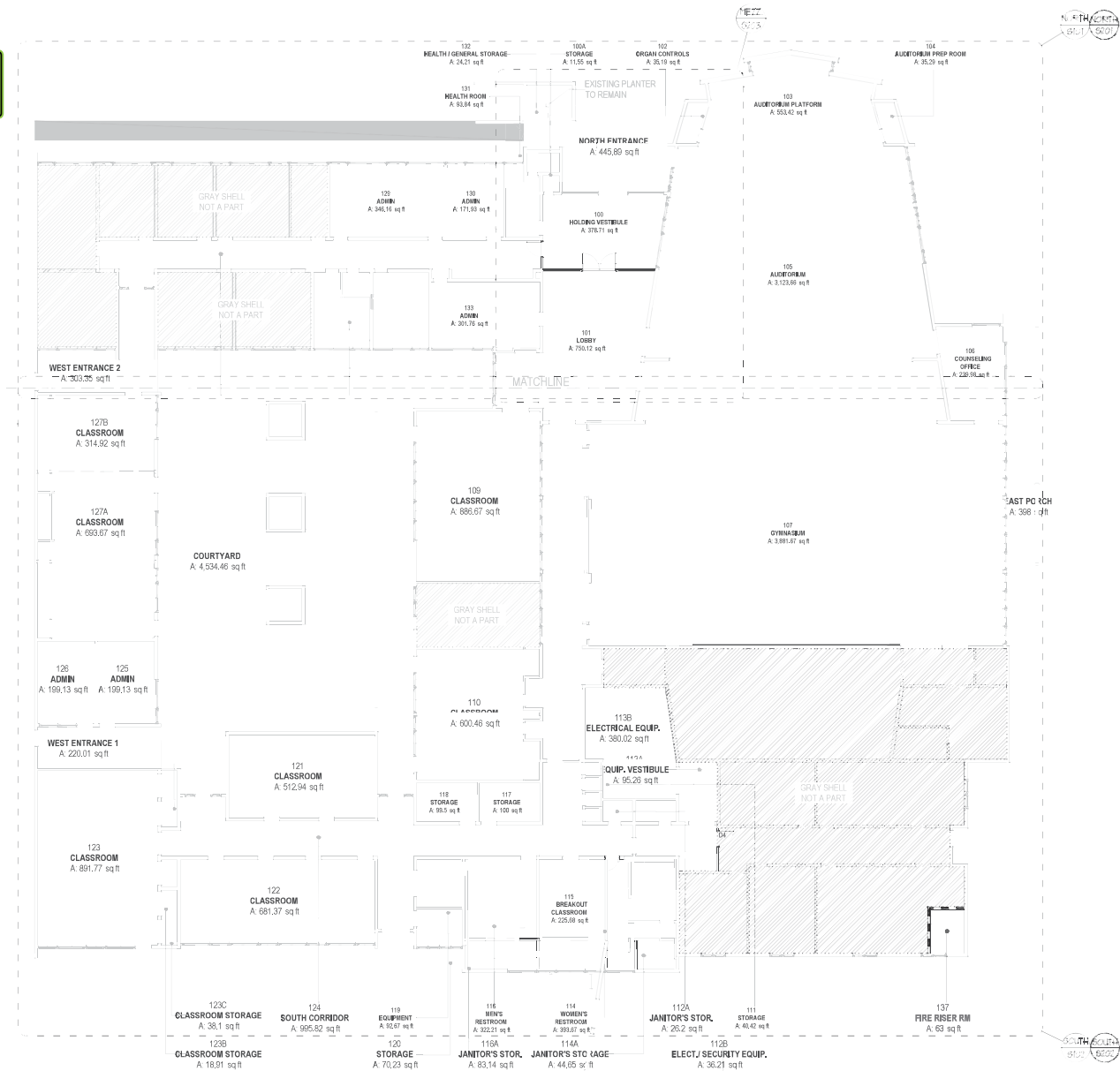
Vice President | Lic.# S.0068221

📍 1129 S. Casino Center Blvd. | Las Vegas, NV 89104 📞 702.347.7777 🌐 [mfrenv.com](http://mfrenv.com)



Disclaimer: The information above has been obtained from sources believed reliable. While we do not doubt its accuracy, we have not verified it and make no guarantee, warranty or representation about it. It is your responsibility to independently confirm its accuracy and completeness. Any projections, opinions, assumptions or estimates used are for example only and do not represent the current or future performance of the property. The value of this transaction to you depends on tax and other factors which should be evaluated by your tax, financial and legal advisors. You and your advisors should conduct a careful, independent investigation of the property to determine for your satisfaction the suitability of the property for your needs. This information has been prepared exclusively for the clients of Michaels Follmer Real Estate (MFRE) and is confidential. It is the property of MFRE, and reproduction of any portion without the written consent of MFRE is strictly prohibited.

# FLOOR PLAN



**JUSTIN MICHAELS**

Vice President | Lic.# S.0068221

📍 1129 S. Casino Center Blvd. | Las Vegas, NV 89104 📞 702.347.7777 🌐 mfvrenv.com



Disclaimer: The information above has been obtained from sources believed reliable. While we do not doubt its accuracy, we have not verified it and make no guarantee, warranty or representation about it. It is your responsibility to independently confirm its accuracy and completeness. Any projections, opinions, assumptions or estimates used are for example only and do not represent the current or future performance of the property. The value of this transaction to you depends on tax and other factors which should be evaluated by your tax, financial and legal advisors. You and your advisors should conduct a careful, independent investigation of the property to determine for your satisfaction the suitability of the property for your needs. This information has been prepared exclusively for the clients of Michaels Follmer Real Estate (MFRE) and is confidential. It is the property of MFRE, and reproduction of any portion without the written consent of MFRE is strictly prohibited.

[illegible]

PLAN  
NORTH



MICHAELS FOLLMER  
MFRE  
REAL ESTATE

Disclaimer: The information above has been obtained from sources believed reliable. While we do not doubt its accuracy, we have not verified it and make no guarantee, warranty or representation about it. It is your responsibility to independently confirm its accuracy and completeness. Any projections, opinions, assumptions or estimates used are for example only and do not represent the current or future performance of the property. The value of this transaction to you depends on tax and other factors which should be evaluated by your tax, financial and legal advisors. You and your advisors should conduct a careful, independent investigation of the property to determine for your satisfaction the suitability of the property for your needs. This information has been prepared exclusively for the clients of Michaels Follmer Real Estate (MFRE) and is confidential. It is the property of MFRE, and reproduction of any portion without the written consent of MFRE is strictly prohibited.