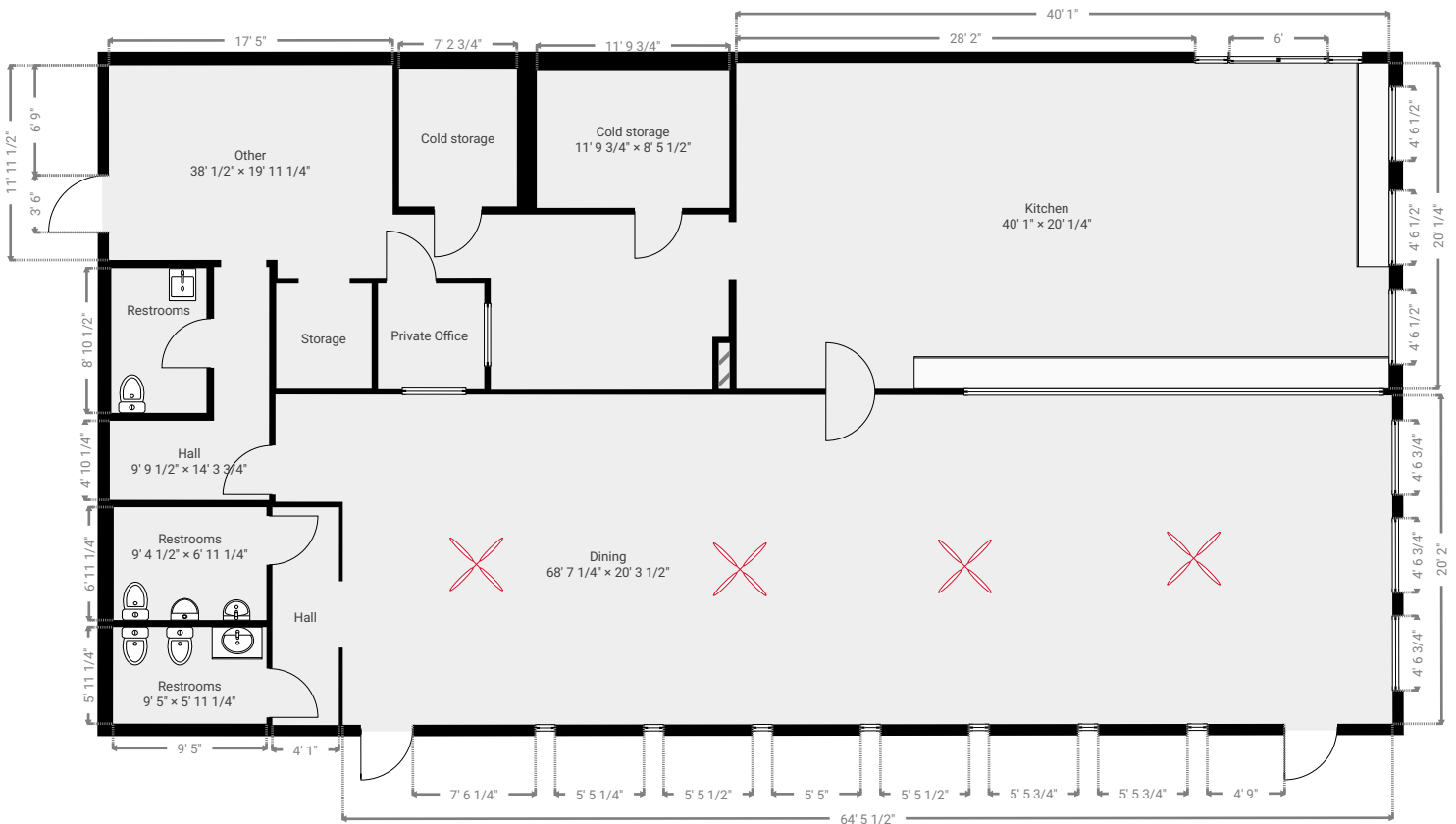


LIVING AREA: 3347.90 sq ft • FLOORS: 1

▼ Ground Floor

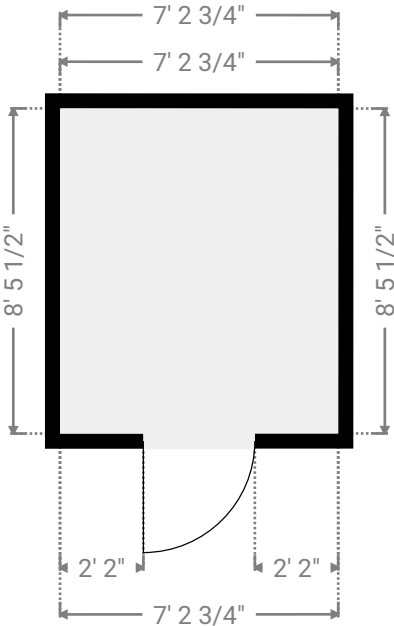
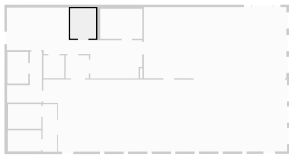


This floor plan is provided without warranty of any kind. Broken Crayon Photography, disclaims any warranty including, without limitation, satisfactory quality or accuracy of dimensions. While we do our best at being accurate, we cannot guarantee square footage calculations. While we are providing measurements and a floor plan ultimately, the real estate agent is responsible to make sure it's accurate. If you see a discrepancy, let us know immediately!

TOTAL AREA: 3346.03 sq ft • LIVING AREA: 3347.90 sq ft • FLOORS: 1

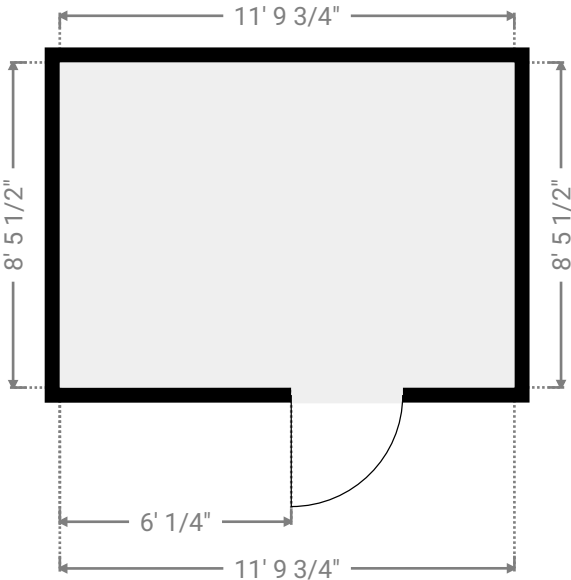
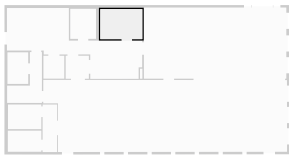
▼ Cold storage
Ground Floor

WIDTH: 7' 2 3/4" • LENGTH: 8' 5 1/2"
AREA: 61.15 sq ft • PERIMETER: 31' 4 1/2"



▼ Cold storage
Ground Floor

WIDTH: 11' 9 3/4" • LENGTH: 8' 5 1/2"
AREA: 99.91 sq ft • PERIMETER: 40' 6 1/2"

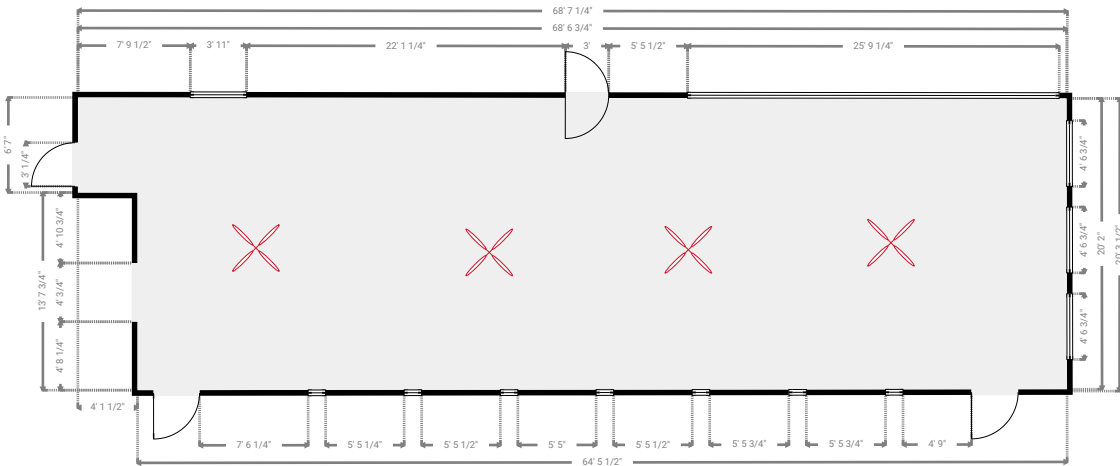
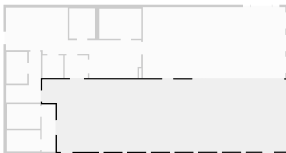


This floor plan is provided without warranty of any kind. Broken Crayon Photography, disclaims any warranty including, without limitation, satisfactory quality or accuracy of dimensions. While we do our best at being accurate, we cannot guarantee square footage calculations. While we are providing measurements and a floor plan ultimately, the real estate agent is responsible to make sure it's accurate. If you see a discrepancy, let us know immediately!

TOTAL AREA: 3346.03 sq ft • LIVING AREA: 3347.90 sq ft • FLOORS: 1

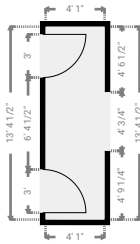
▼ Dining
Ground Floor

WIDTH: 68' 7 1/4" • LENGTH: 20' 3 1/2"
AREA: 1330.85 sq ft • PERIMETER: 177' 7 1/4"



▼ Hall
Ground Floor

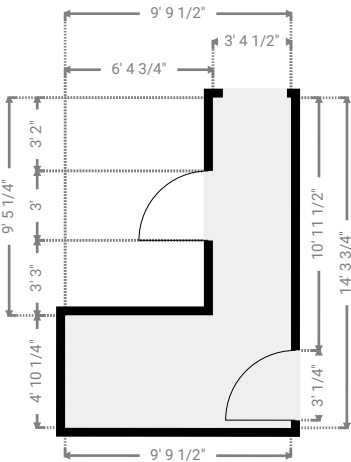
WIDTH: 4' 1" • LENGTH: 13' 4 1/2"
AREA: 54.65 sq ft • PERIMETER: 34' 11"



TOTAL AREA: 3346.03 sq ft • LIVING AREA: 3347.90 sq ft • FLOORS: 1

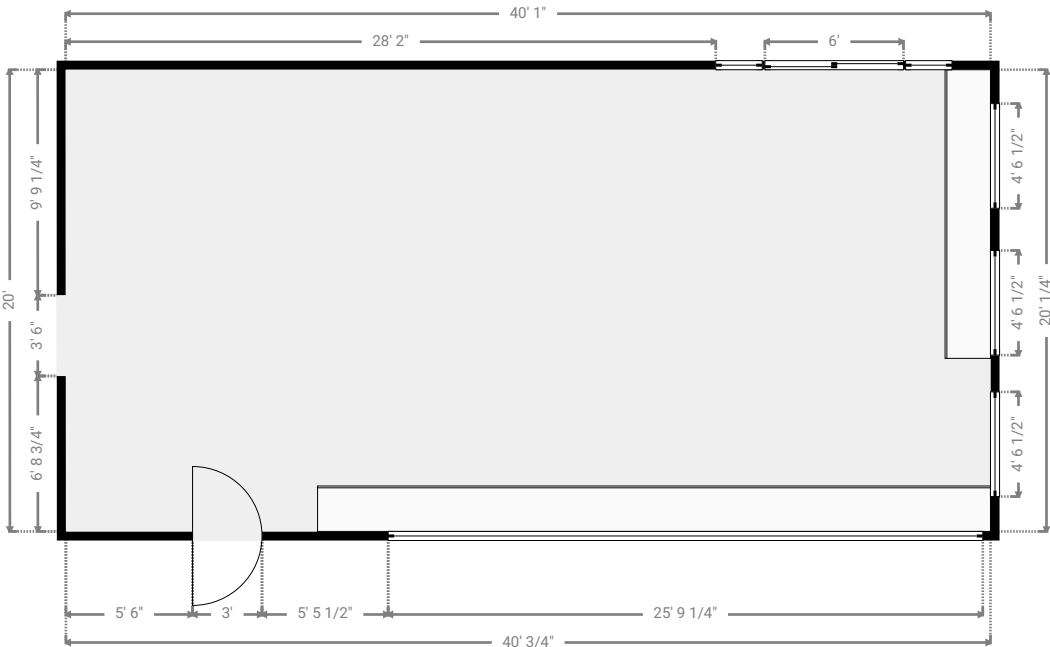
▼ Hall
Ground Floor

WIDTH: 9' 9 1/2" • LENGTH: 14' 3 3/4"
AREA: 79.45 sq ft • PERIMETER: 48' 2"



▼ Kitchen
Ground Floor

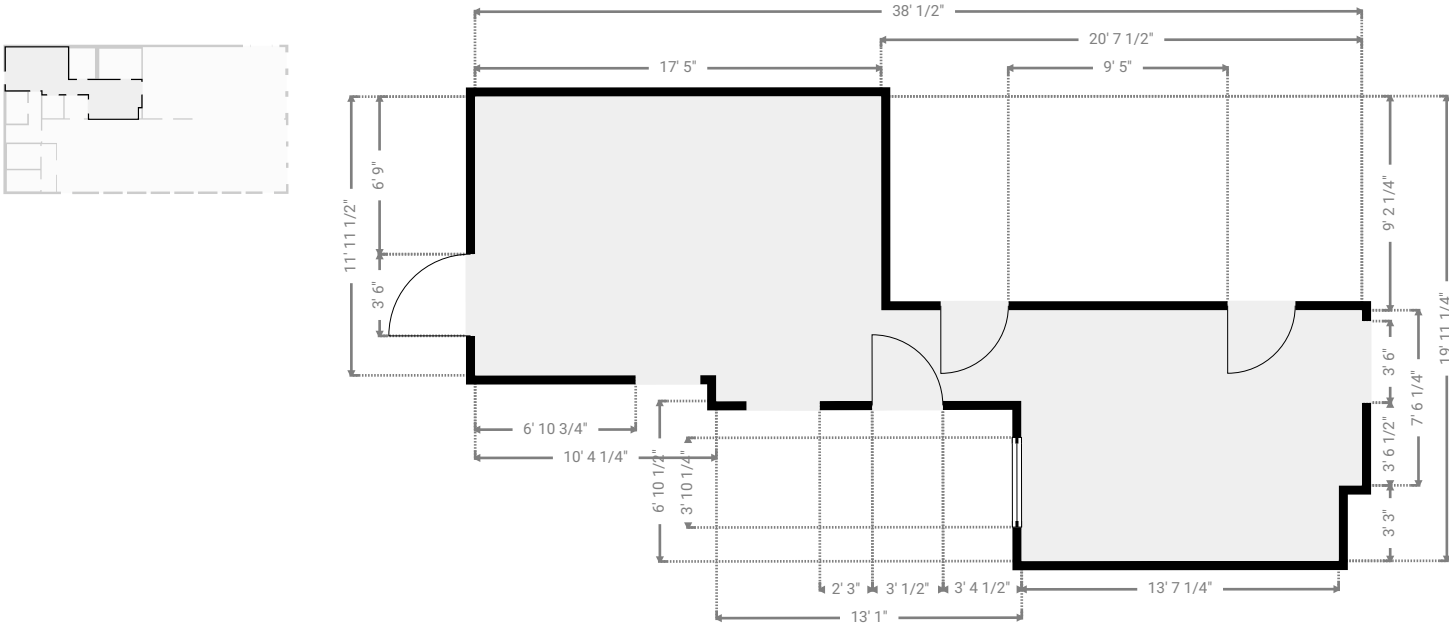
WIDTH: 40' 1" • LENGTH: 20' 1/4"
AREA: 801.95 sq ft • PERIMETER: 120' 2"



TOTAL AREA: 3346.03 sq ft • LIVING AREA: 3347.90 sq ft • FLOORS: 1

▼ Other
Ground Floor

WIDTH: 38' 1/2" • LENGTH: 19' 11 1/4"
AREA: 393.35 sq ft • PERIMETER: 115' 11 3/4"



▼ Private Office
Ground Floor

WIDTH: 6' 6 1/4" • LENGTH: 6' 5 3/4"
AREA: 42.28 sq ft • PERIMETER: 26'

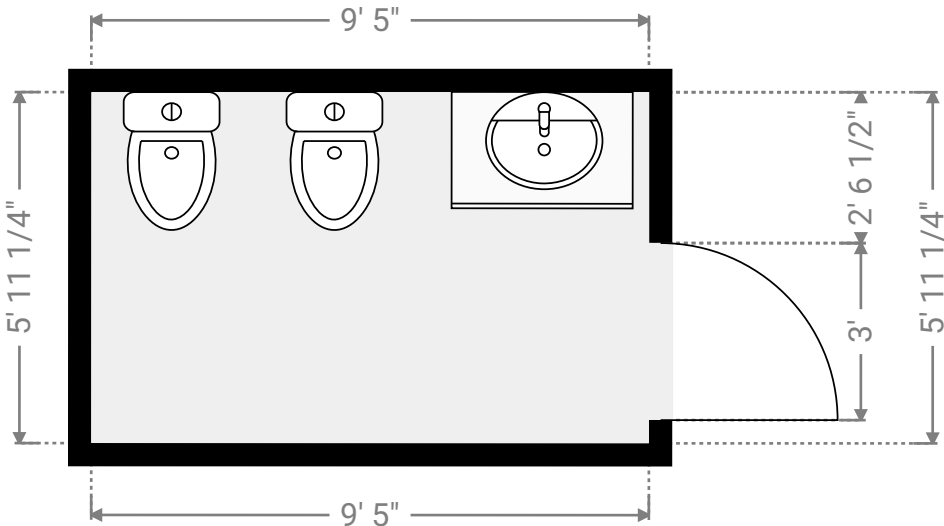


This floor plan is provided without warranty of any kind. Broken Crayon Photography, disclaims any warranty including, without limitation, satisfactory quality or accuracy of dimensions. While we do our best at being accurate, we cannot guarantee square footage calculations. While we are providing measurements and a floor plan ultimately, the real estate agent is responsible to make sure it's accurate. If you see a discrepancy, let us know immediately!

TOTAL AREA: 3346.03 sq ft • LIVING AREA: 3347.90 sq ft • FLOORS: 1

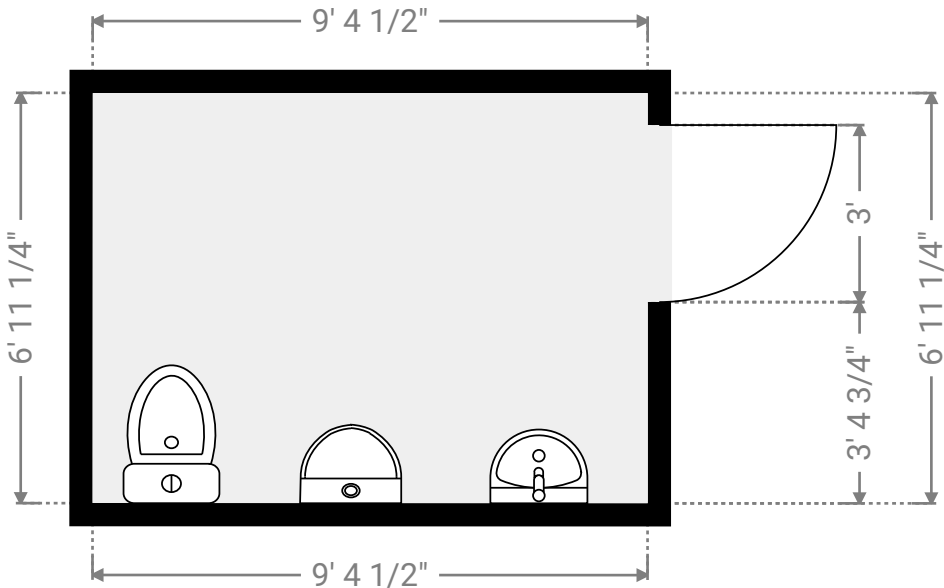
▼ Restrooms
Ground Floor

WIDTH: 9' 5" • LENGTH: 5' 11 1/4"
AREA: 55.93 sq ft • PERIMETER: 30' 8 3/4"



▼ Restrooms
Ground Floor

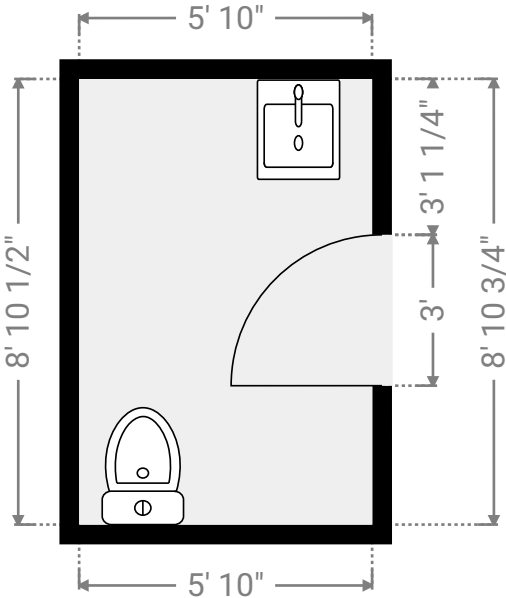
WIDTH: 9' 4 1/2" • LENGTH: 6' 11 1/4"
AREA: 65.06 sq ft • PERIMETER: 32' 7 1/2"



This floor plan is provided without warranty of any kind. Broken Crayon Photography, disclaims any warranty including, without limitation, satisfactory quality or accuracy of dimensions. While we do our best at being accurate, we cannot guarantee square footage calculations. While we are providing measurements and a floor plan ultimately, the real estate agent is responsible to make sure it's accurate. If you see a discrepancy, let us know immediately!

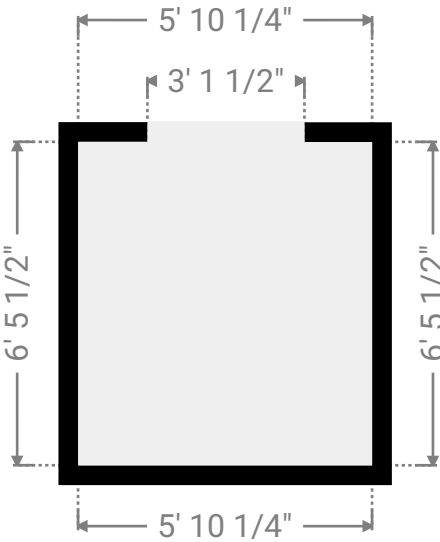
▼ Restrooms
Ground Floor

WIDTH: 5' 10" • LENGTH: 8' 10 3/4"
AREA: 51.89 sq ft • PERIMETER: 29' 5 1/2"



▼ Storage
Ground Floor

WIDTH: 5' 10 1/4" • LENGTH: 6' 5 1/2"
AREA: 37.79 sq ft • PERIMETER: 24' 7 1/2"



This floor plan is provided without warranty of any kind. Broken Crayon Photography, disclaims any warranty including, without limitation, satisfactory quality or accuracy of dimensions. While we do our best at being accurate, we cannot guarantee square footage calculations. While we are providing measurements and a floor plan ultimately, the real estate agent is responsible to make sure it's accurate. If you see a discrepancy, let us know immediately!