

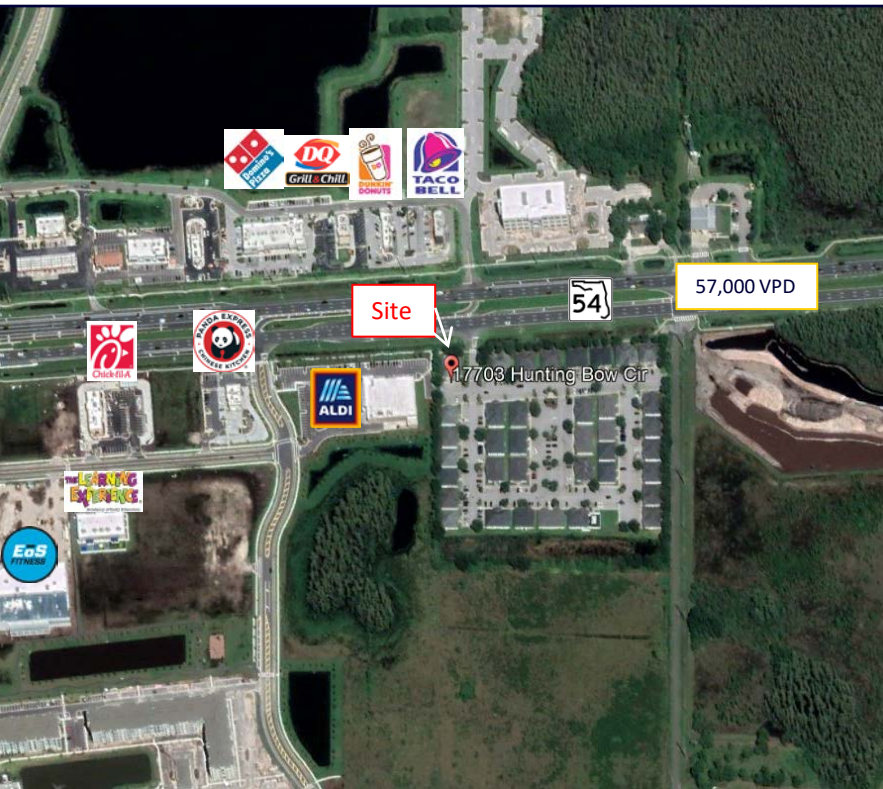
Ballantrae Office Park

Property Details

- Available April 1, 2023, 1,500 SF professional office at the NW corner of the office park with SR 54 frontage
- Five offices, large conference room/office, restroom, breakroom and reception with ceramic tile floors
- Water, sewer and garbage included in lease rate
- Abundant first come first served parking and located within minutes of the Suncoast Parkway and U.S. 41
- Numerous restaurants within minutes of this property.



\$23.00 / SF / YR / MG (\$2,875.00/Month)



Shane Billings

Commercial Associate

Cell: 813-995-1592

Shane@BridgewaterCommercial.com



Bridgewater Commercial Real Estate
447 3rd Ave N Suite 403
St. Petersburg, FL 33701



2022 Area Demographics

	1 Mile	3 Mile	5 Mile
Population	5,058	40,878	80,809
Median Age	35.5	40.7	42.3
Total Households	1,606	14,544	30,230
Average HH Income	\$120,489	\$122,981	\$116,858



Shane Billings

Commercial Associate

Cell: 813-995-1592

Shane@BridgewaterCommercial.com



Bridgewater Commercial Real Estate

447 3rd Ave N Suite 403

St. Petersburg, FL 33701