

FOR LEASE

Owned and Operated by  **LINK**

WESTGATE BUSINESS CENTER I

2561-2631 Territorial Road, St Paul, MN 55114

11,075 SF



**LEASING INFO
& CONTACT**

Eric Batiza, SIOR

(612) 217-5121 / eric.batiza@jll.com

Dan Larew, CCIM SIOR

(612) 217-6726 / dan.larew@jll.com

Connor Ott

(612) 217-6741 / connor.ott@jll.com



PROPERTY OVERVIEW

Westgate Business Center I is a 78,945 SF high-image office/warehouse building located in Westgate Business Park with excellent access to I-94, I-35W and Highway 280.

AMENITIES

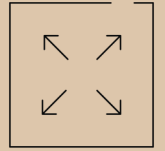
- > Close proximity to public transportation; just two short blocks from the Green Line LRT (Westgate Station) and Metro Transit bus routes along University Avenue
- > Excellent access to I-94, I-35W and Highway 280
- > High-image office/warehouse
- > 18' clear height



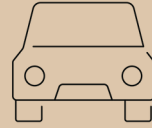
Building Size:
78,945 SF



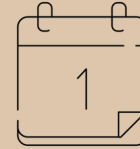
2561-2631 Territorial Rd
St Paul, MN



Available SF:
#2577: 11,075 SF



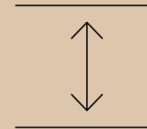
Parking:
232 stalls
(2.94/1,000 SF)



Date Available:
Now



Lease Rate
Negotiable



18' Clear Height

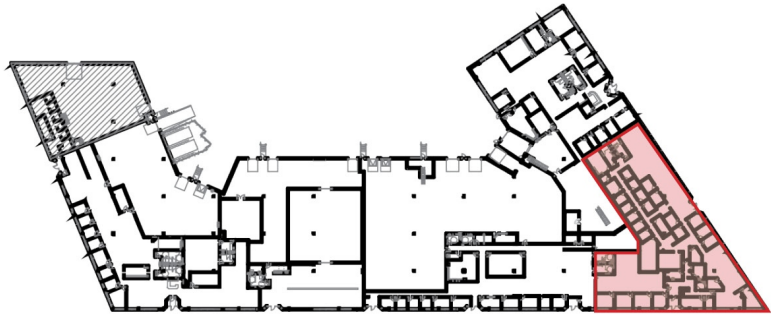


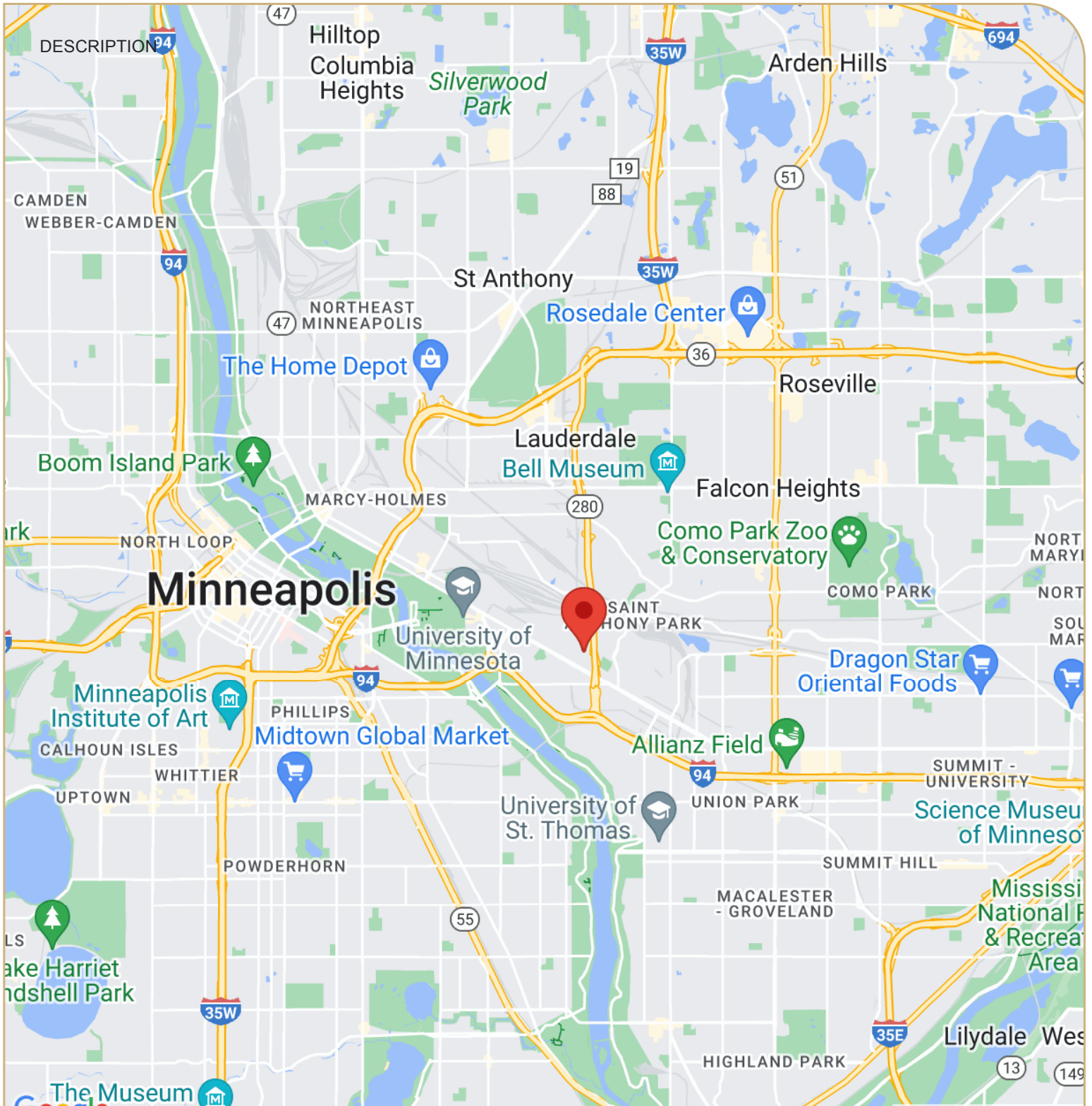
2024 Tax & CAM:
\$7.05 PSF



FLOOR PLAN

SUITE 2577
11,075 SF Total
All Office
Available Now





Eric Batiza, SIOR
 Managing Director
 612-217-5123
 eric.batiza@jll.com

Dan Larew, CCIM SIOR
 Managing Director
 612-217-6726
 dan.larew@jll.com

Connor Ott
 Vice President
 612-217-6742
 connor.ott@jll.com

Although information has been obtained from sources deemed reliable, neither Owner nor JLL makes any guarantees, warranties or representations, express or implied, as to the completeness or accuracy as to the information contained herein. Any projections, opinions, assumptions or estimates used are for example only. There may be differences between projected and actual results, and those differences may be material. The Property may be withdrawn without notice. Neither Owner nor JLL accepts any liability for any loss or damage suffered by any party resulting from reliance on this information. If the recipient of this information has signed a confidentiality agreement regarding this matter, this information is subject to the terms of that agreement. ©2023. Jones Lang LaSalle IP, Inc. All rights reserved. JLL | 250 Nicollet Mall, Suite 1000 | Minneapolis, MN 55401