

# WEST END PLACE

*Ybor City*

32,000 SF  
FOR SUBLEASE

Full  
Floor  
Available

1001 E. PALM AVENUE, TAMPA, FL 33605



# Unique Sublease Opportunity



32,000 SF — Full Floor Available



164 Workstations



4 Phone Booths



Furniture Available



Sublease Term: Flexible/Negotiable



## BUILDING AMENITIES



Private Pickleball and Basketball courts



Dining hall with kitchen



Building Conferencing Center with seating of up to 75 people



On-site fitness center with showers and lockers



On-site Security



Walking distance to a number of restaurants, bars and hotels

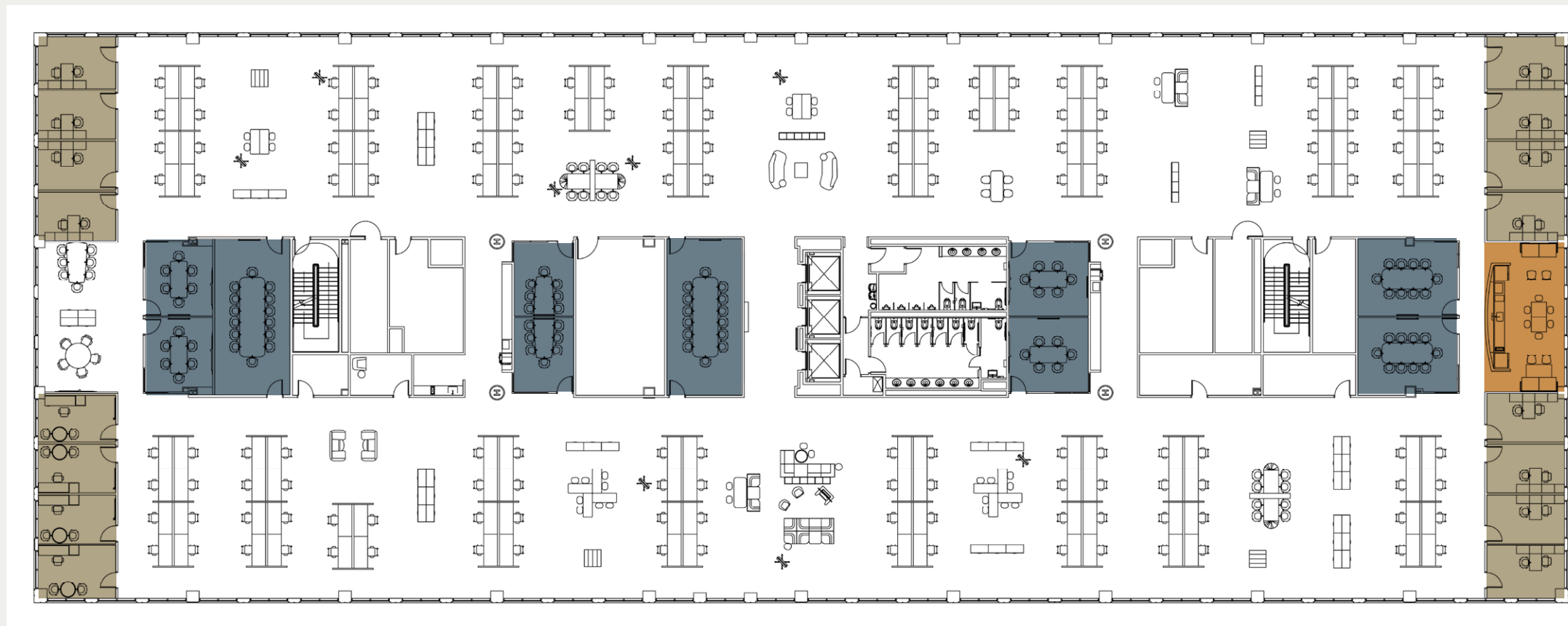


# Floor Plan

32,000 SF



● PRIVATE OFFICES    ● MEETING ROOMS    ● BREAK ROOM





# Walk the Block at West End

**WEST END**  
PLACE  
*Ybor City*

6

1

4

8

3

7

4

1

2

1

3

2

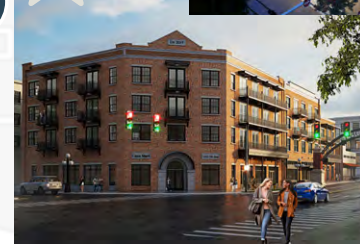
1

5

HOTEL  
**HAYA**  
YBOR CITY

*Hampton Inn*

Gas Worx



--- 7TH AVENUE  
..... NUCCIO PKWY  
..... TROLLEY

## RESTAURANTS / RETAIL

- 1 Barterhouse
- 2 The Bricks
- 3 Los Chapos Tacos
- 4 Flan Factory
- 5 Le Segunda Bakery
- 6 Palm Avenue Sandwich Shop
- 7 Bread on Bay
- 8 La Setima Club

## EVENTS / ACTIVITIES

- 1 Centro Asturiano de Tampa

## HOTELS

- 1 Hampton Inn
- 2 Hotel Haya

## WALKABLE DEVELOPMENTS

- 1 Casa Gomez
- 2 Casa Carbonell
- 3 Casa Pedroso
- 4 Casa Marti
- 5 Centro Ybor





# WEST END PLACE

*Ybor City*

## FOR MORE INFO, CONTACT:

**Scott Garlick**  
Executive Vice President  
[scott.garlick@cbre.com](mailto:scott.garlick@cbre.com)  
+1 813 739 9899

**Nicole Grzywacz**  
Transaction Manager  
[nicole.grzywacz@cbre.com](mailto:nicole.grzywacz@cbre.com)  
+1 917 733 6931

© 2025 CBRE, Inc. All rights reserved. This information has been obtained from sources believed reliable, but has not been verified for accuracy or completeness. You should conduct a careful, independent investigation of the property and verify all information. Any reliance on this information is solely at your own risk. CBRE and the CBRE logo are service marks of CBRE, Inc. All other marks displayed on this document are the property of their respective owners, and the use of such logos does not imply any affiliation with or endorsement of CBRE. Photos herein are the property of their respective owners. Use of these images without the express written consent of the owner is prohibited.

**CBRE**