

LITTLETON PROFESSIONAL BUILDING

AVAILABLE

OFFICE SPACES



UNITS AVAILABLE

Suite 50: \$690/month (234 sqft)


Suite 25: \$560/month (250 sqft)



709 W Littleton Blvd
Littleton, CO 80110

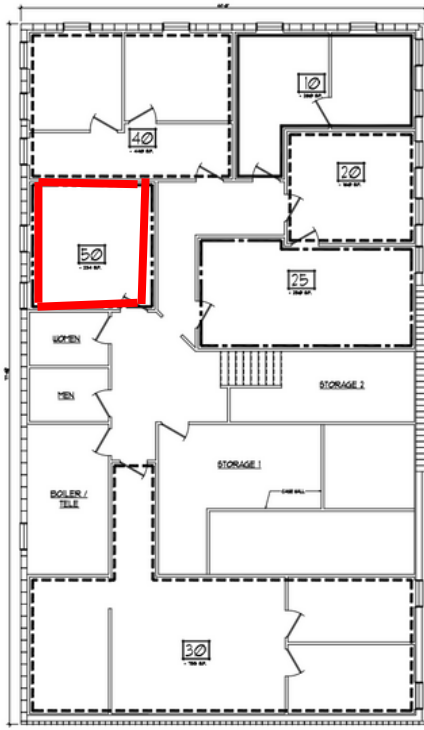
Exceptional value in a building that was newly acquired and is under new management, with retro style updated interior common areas, exterior and landscaping. Get in prior to prices rising in the immediate area. Minutes from hip Littleton Downtown directly between Broadway and Santa Fe for easy access across the city. Walking distance to parks, restaurants and one block to the new Cherry Cricket Littleton.

CHRIS LAMEE
Broker/Owner

 (303) 748-3843

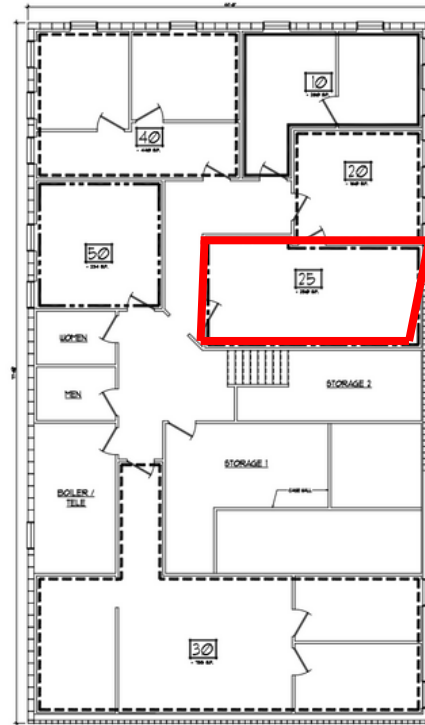
 chris@banyanrealestate.com

LITTLETON PROFESSIONAL BUILDING



Suite 50

Suite 50-\$690/mos
Lease an updated private office



Suite 25

Suite 25-\$560/mos
Lease a private office on lower level



*Square footage numbers are BOMA measurements with a common area factor. All information is considered reliable but not guaranteed.

CHRIS LAMEE
Broker/Owner

(303) 748-3843
chris@banyanrealestate.com