

Retail Opportunity

John Keogh

Senior Broker
+1 203 497 3953
john.keogh@colliers.com

205 Whitney Avenue, Suite 300
New Haven, CT 06511
P: +1 203 562 5000
colliers.com/newhaven

808 & 848 Chapel Street New Haven, CT

Street Retail in New Mixed Use Building

Colliers International is please to present three new retail storefronts for lease in the heart of downtown New Haven. Located at the intersection of Chapel and Orange Streets, the stores occupy the ground floors of two luxury apartment buildings under construction by the internationally renowned developer CA Student Living. Ideally suited for convenience-oriented shopping, food service and professional services, the stores have 12-foot ceilings and are slated for delivery in late July of 2024.

Copyright © 2024 Colliers International. Information herein has been obtained from sources deemed reliable, however its accuracy cannot be guaranteed. The user is required to conduct their own due diligence and verification.

For Lease

Property Details

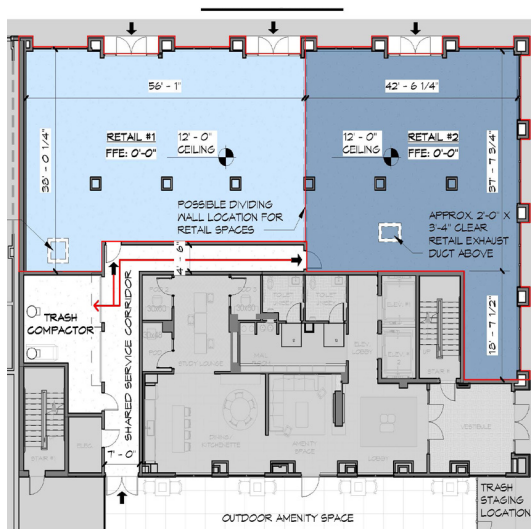
Address:	808 & 848 Chapel Street	
City, State:	New Haven, CT	
Rentable Area:	808 Unit 1	2,015 SF
	808 Unit 2	1,919 SF
	808 Units 1 & 2 can-combine for total of	3,934 SF
	848 Unit 1	2,028 SF
Lease Rate:	\$ 35.00 NNN	

Demographics

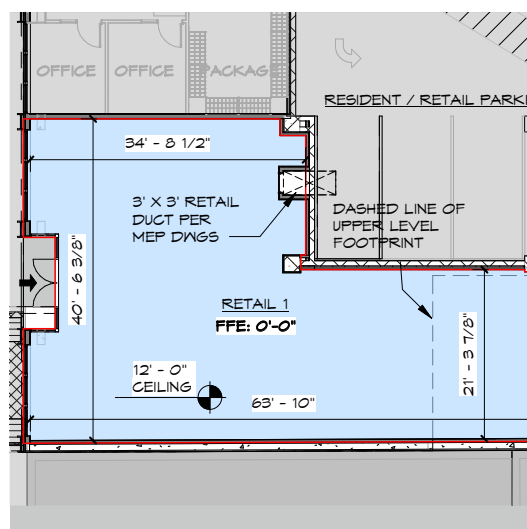
	2 mile	5 mile	10 mile
2023 Population	96,550	263,022	466,186
2023 Households	35,548	101,702	182,645
Avg Household Income	\$67,712	\$78,956	\$95,01
Total Specified Consumer Spend	\$828,099,831	\$2,748,807,556	\$5,682,177,808

Space Layouts

#808



#848



John Keogh

Senior Broker
+1 203 497 3953
john.keogh@colliers.com

205 Whitney Avenue, Suite 300
New Haven, CT 06511
P: +1 203 562 5000
colliers.com/newhaven

