



Premier Warehouse Distribution
Class 'A' Facility



±111,769 SF AVAILABLE FOR LEASE

2333 E. PACIFICA PLACE | RANCHO DOMINGUEZ, CA 90220

30' CLEAR | ESRF SPRINKLER SYSTEM | 15 DOCK HIGH POSITIONS | AVAILABLE SEPTEMBER 1ST, 2024



±111,769 SF Building

2333 E. PACIFICA PLACE

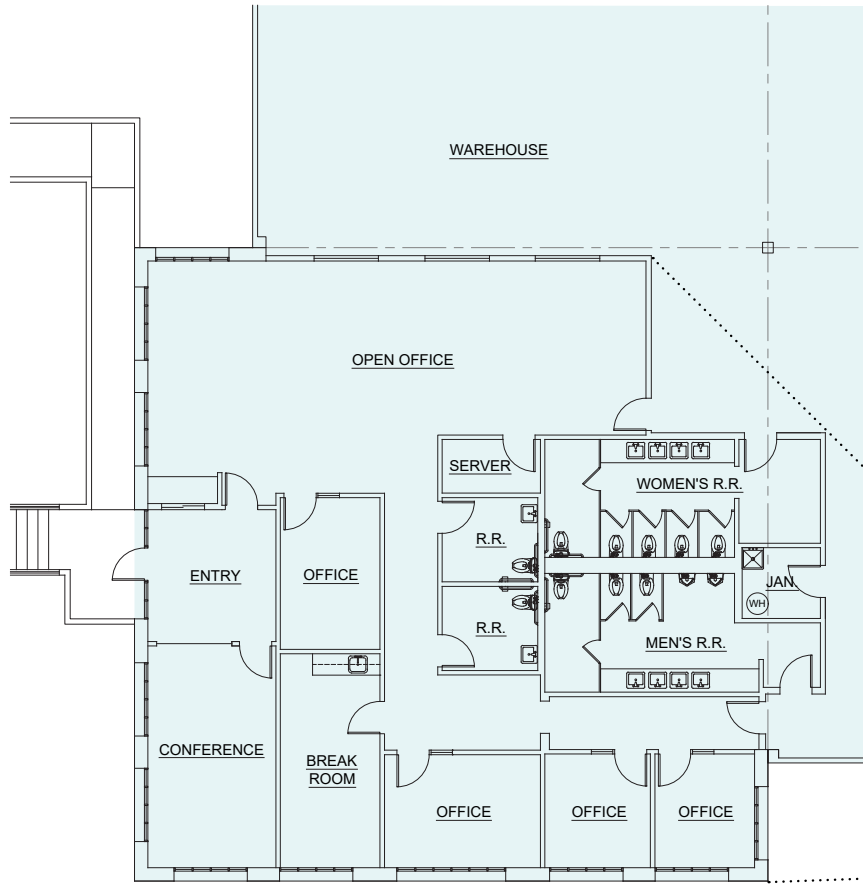


Property Highlights

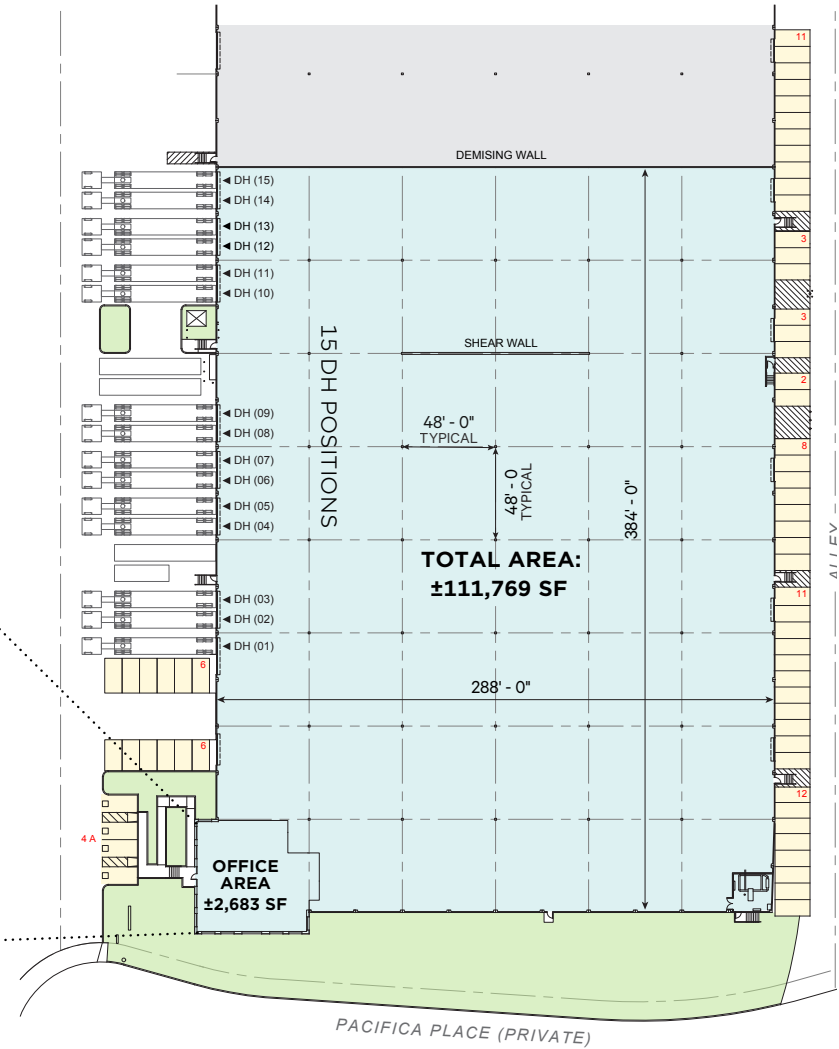
- Rancho Pacifica Industrial Park
- Best in Class Space
- Private Secured Park Environment
- 24 Hour Park Security
- ESFR Sprinkler System
- 30' Clearance
- 15 Dock Positions
- Refurbished ±2,683 SF Office
- Close Proximity to Ports of LA & LB & 405, 110, 91 & 710 Freeways

Los Angeles
International
Airport





OFFICE AREA: 3,396 SF



OFFICE
±2,683 SF

WAREHOUSE
±109,086 SF

TOTAL
±111,769 SF

PLAN LAYOUT SUBJECT TO FIELD CONDITIONS AND MAY DIFFER FROM PLAN AS SHOWN. ALL INFORMATION PRESENTED ON THIS DRAWING IS PRESUMED TO BE ACCURATE, HOWEVER TENANT SHOULD VERIFY PERTINENT INFORMATION PRIOR TO COMMITTING TO A LEASE. ANY FURNITURE OR APPLIANCES SHOWN ON PLAN ARE FOR CONCEPT ONLY AND WILL BE TENANT PROVIDED.



**Rexford
Industrial**

Leasing Contacts

JOHN SCHUMACHER

+1 310 489 1439

JOHN.SCHUMACHER@CBRE.COM

LIC. 00987225

NICKI PEETZ

+1 310 433 0602

NICKI.PEETZ@CBRE.COM

LIC. 01720809

CBRE

CBRE

2221 Rosecrans Ave, STE 100

El Segundo, CA 90245

© 2024 CBRE, Inc. All rights reserved. This information has been obtained from sources believed reliable but has not been verified for accuracy or completeness. CBRE, Inc. makes no guarantee, representation or warranty and accepts no responsibility or liability as to the accuracy, completeness, or reliability of the information contained herein. You should conduct a careful, independent investigation of the property and verify all information. Any reliance on this information is solely at your own risk. CBRE and the CBRE logo are service marks of CBRE, Inc. All other marks displayed on this document are the property of their respective owners, and the use of such marks does not imply any affiliation with or endorsement of CBRE. Photos herein are the property of their respective owners. Use of these images without the express written consent of the owner is prohibited.