



CALL BEFORE YOU DIG

NOTE: DEVELOPER SHALL BE RESPONSIBLE FOR ANY CONFLICTS WITH EXISTING UTILITIES.

TEXT LEGEND

- AC = ACREAGE, AE = ACCESS EASEMENT, ASP = ALUMINIZED STEEL PIPE (TYPE II), BC = BACK OF CURB, BM = BENCHMARK, CB = CATCH BASIN (S-SINGLE & D-DOUBLE), CL = CENTERLINE, CMP = CONC. MONUMENT FOUND, CO = CORRUGATED METAL PIPE, CO = CLEAN OUT, CSP = CORRUGATED STEEL PIPE, DE = DRAINAGE EASEMENT, DI = DROP INLET, DIP = DUCTILE IRON PIPE, DM = DOGHOUSE MANHOLE, ELEV = ELEVATION, FE = FLARED END SECTION, FFE = FINISHED FLOOR ELEVATION, FPE = BUILDING PAD ELEVATION, FH = FIRE HYDRANT, GI = GRATE INLET, GW = GUY WIRE, HC = HANDICAP RAMP, HW = HEADWALL, IE = INVERT ELEVATION, JB = JUNCTION BOX, LL = LAND LOT, LLL = LAND LOT LINE, MH = MANHOLE, OS = OUTLET STRUCTURE, PEP = POLYETHYLENE PIPE, PL = PROPERTY LINE, POB = POINT OF BEGINNING, PP = POWER POLE, PVC = POLY VINYL CHLORIDE PIPE, PVMT = PAVEMENT, RW = RIGHT-OF-WAY, RCP = REINFORCED CONC. PIPE, SB = BUILDING SETBACK LINE, SC = SPILL CURB, SES = SAFETY END SECTION, SN = STREET NAME SIGN EASEMENT, STA = STATION, SW = CONCRETE SIDEWALK, TC = TEMPORARY CONSTRUCTION EASEMENT, UE = UTILITY EASEMENT

SEWER LEGEND

- Sanitary Sewer Manhole, Cleanout, Sanitary Sewer Line

UTILITY NOTES

- 1. SANITARY SEWER SERVICE PROVIDER: CITY OF BUFORD. 2. SANITARY SEWER SERVICE LATERALS SHOULD BE NO LESS THAN 6" DIA PVC AND HAVE A MINIMUM SLOPE OF 1.0%. 3. ALL SANITARY SEWER SYSTEMS ARE DESIGNED AND SHALL BE INSTALLED IN ACCORDANCE WITH THE CITY'S DEVELOPMENT REGULATIONS AND WATER AND SEWER STANDARD SPECIFICATIONS.

SEWER ALLOCATION

SEWER ALLOCATION APPLICATION IS CURRENTLY UNDER CITY OF BUFORD REVIEW.

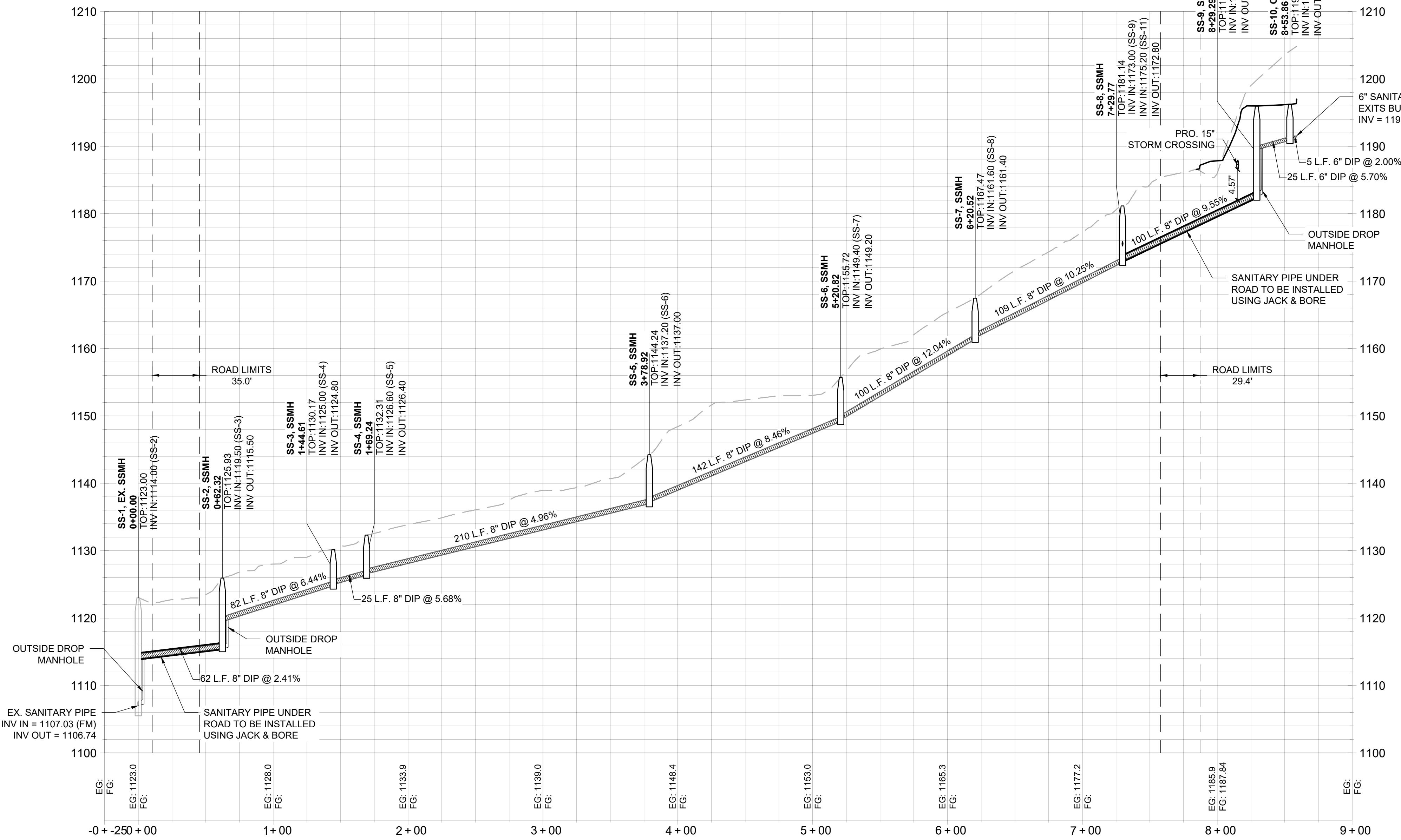
PROPOSED USAGE

COMMERCIAL DEVELOPMENT, OFFICE - GENERAL PER GWINNETT COUNTY DEPARTMENT OF WATER RESOURCES: ANNUAL AVERAGE DAILY UNIT FLOW (GPD) = 175 GPD PER 1,000 SF + 25 GPD PER EMPLOYEE (13,500 SF / 1,000 SF) \* 175 GPD + (25 GPD \* 45 EMPLOYEES) = 3,500 GPD

PROFILE LEGEND

- EXISTING GRADE, PROPOSED GRADE

PROFILE VIEW



PLAN VIEW

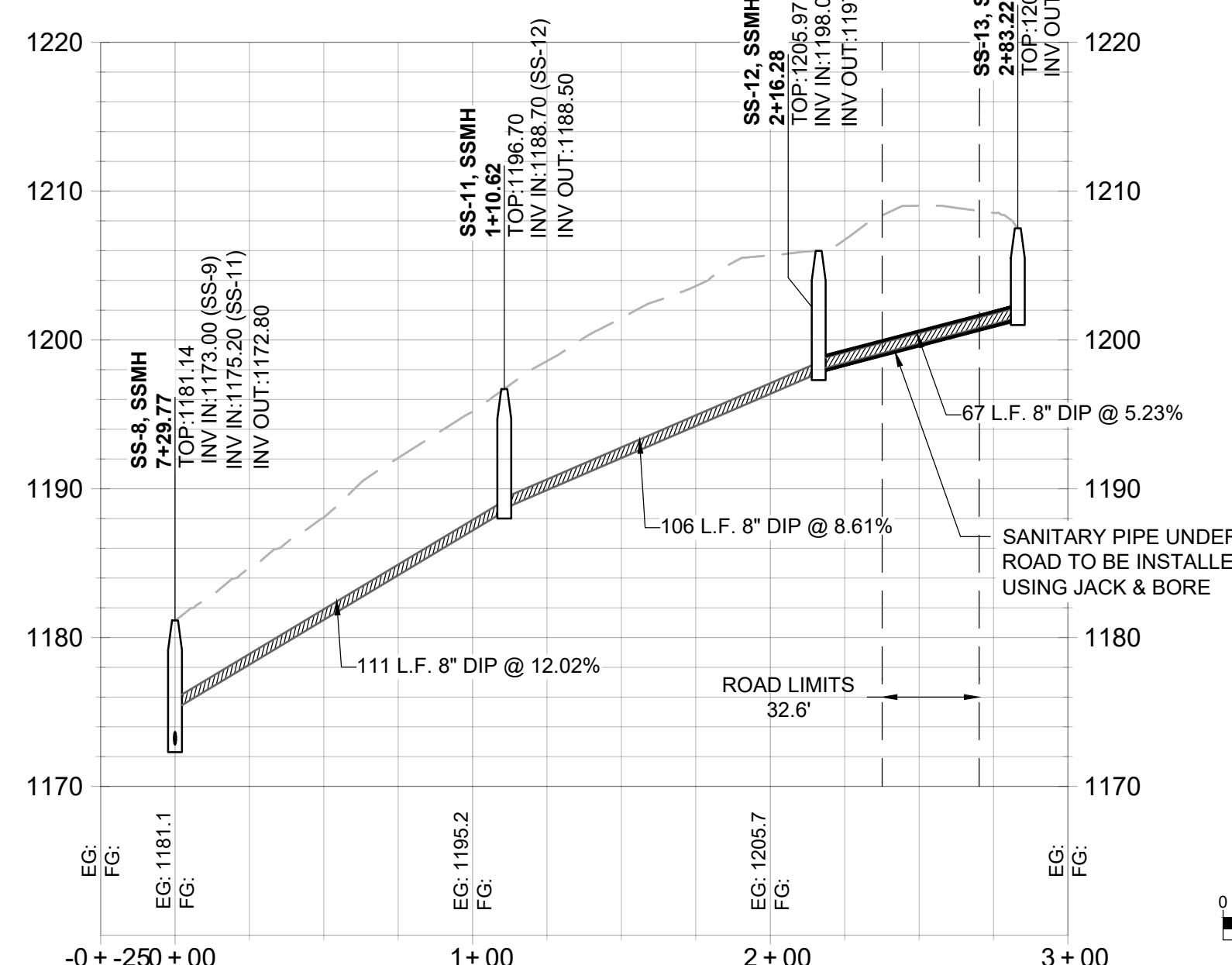
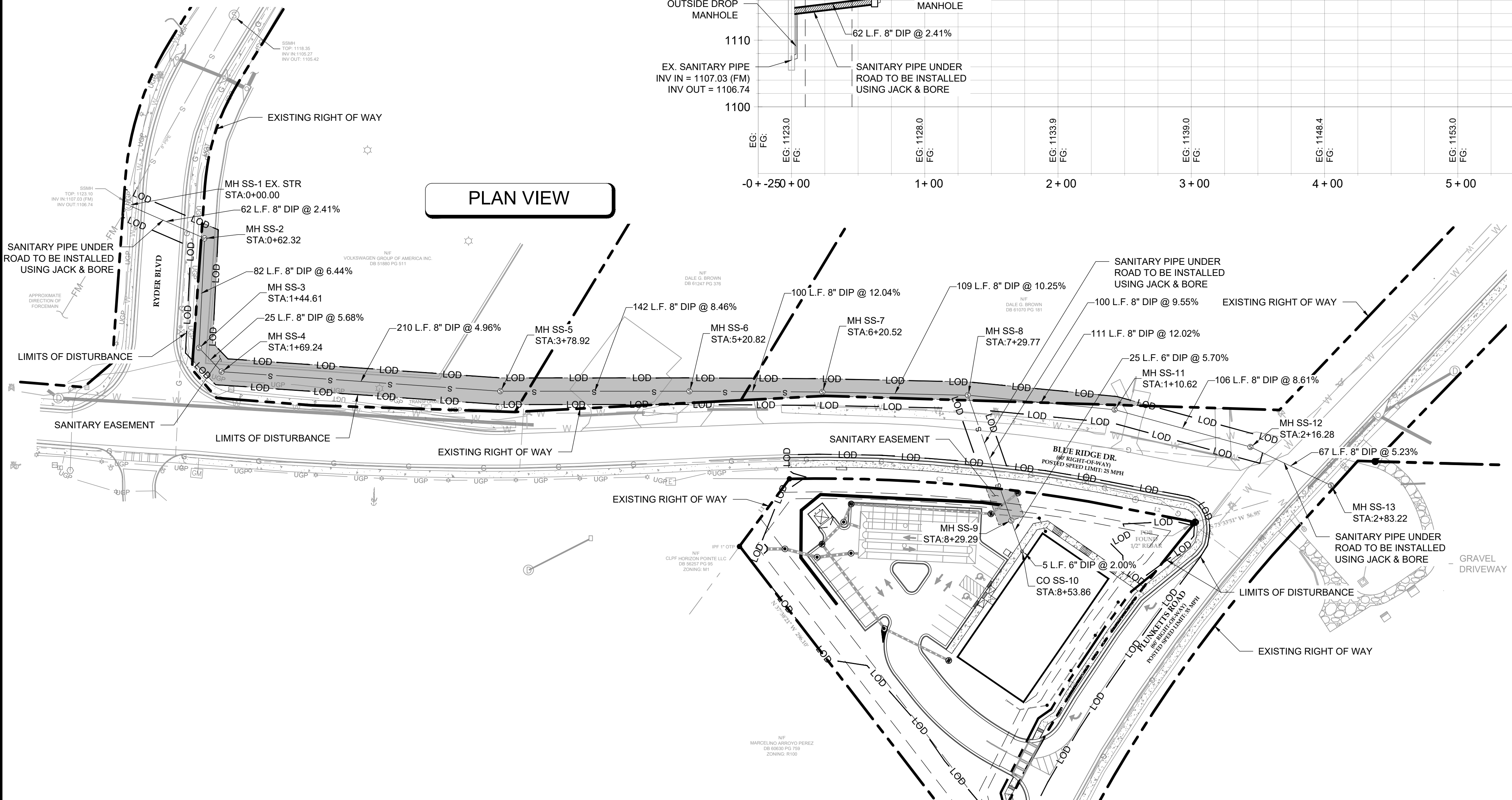


Table with columns: NO, DATE, BY, CHK, APV

Professional Engineer Seal for Tyler Marchman, No. 040369, State of Georgia.

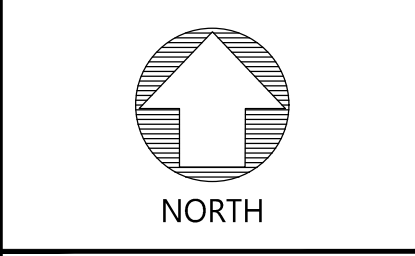
GASWC LEVEL II CERTIFICATION #59016 EXPIRATION DATE: 11/17/2025

299 S. MAIN STREET ALPHARETTA, GA 30009 770-225-4730

BOGAN ENTERPRISES, LLC

11555 MEDLOCK BRIDGE RD. SUITE #190 JOHN'S CREEK, GA 30097 paulkhanisari@gmail.com

SITE CONSTRUCTION PLANS FOR BOGAN ENTERPRISES, LLC



PROJECT NUMBER GA3934-2401 SHEET TITLE

OVERALL SANITARY PLAN & PROFILES SHEET NUMBER

C-400