

The Asher
400
N ALLEN DRIVE



FOR LEASE

Medical | Professional Office

The Asher

Downtown Allen District
400 N. Allen Drive | Allen, TX 75013



OVERVIEW

The newly renovated Asher office building, presented by Gillett Commercial, features 46,350 SF of medical and professional office space. Located in Allen, Texas, this 3-story building is adjacent to downtown Allen near the Allen Public Library, Allen City Hall and Allen High School with quick access to US 75. Starting at 1,100 SF, all suites feature serene, tree-lined views and in-suite bathrooms with multiple floor plans, sizes and build-out options. Building updates include the common areas, all suites, parking lot, HVAC system, technology and more.



Contact John Scott: 972-523-0799 | John@GillettCommerical.com

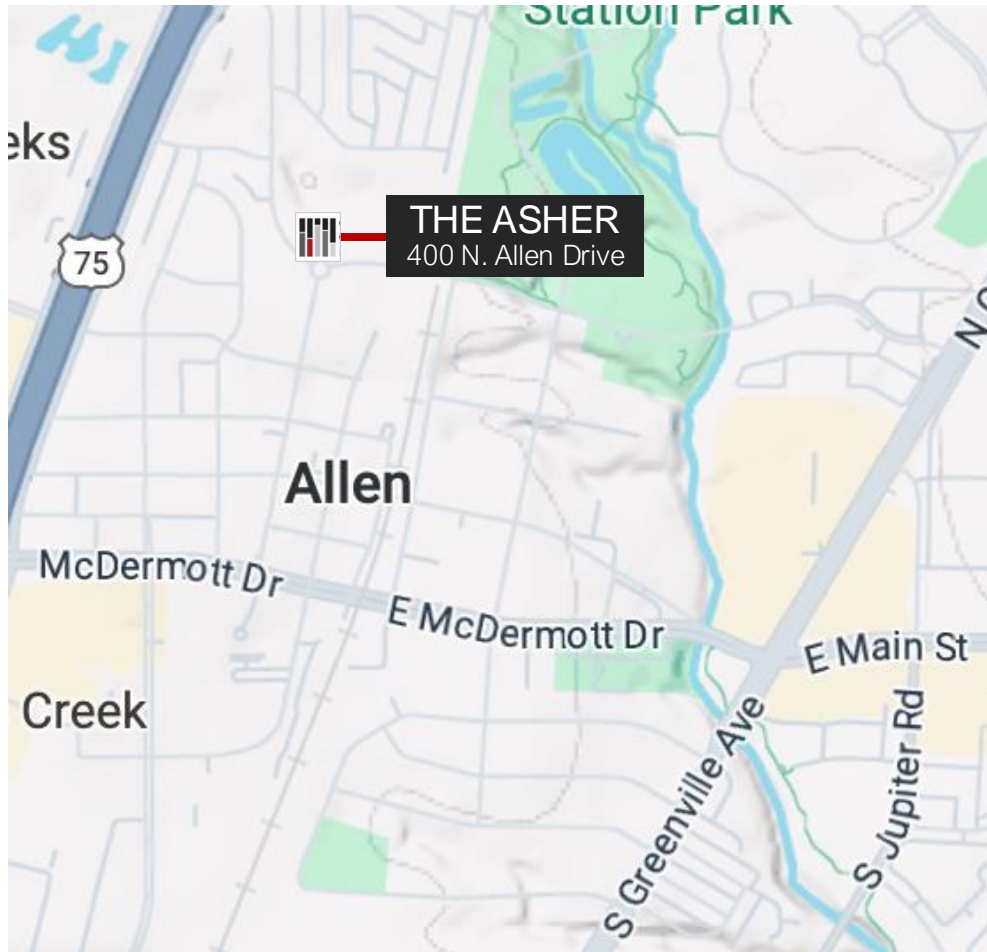
BUILDING OVERVIEW

FOR LEASE

Medical | Professional Office

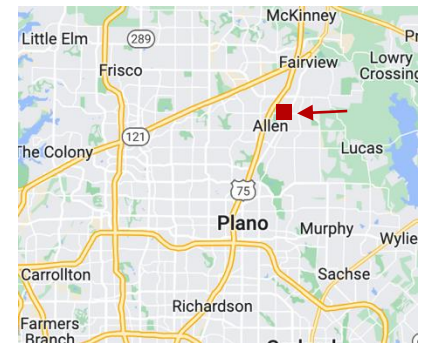
The Asher

Downtown Allen District
400 N. Allen Drive | Allen, TX 75013



LOCATION

The Asher is located on the roundabout at N. Allen Drive. It has easy access to US 75 and is close to The Allen Public Library, Allen City Hall and Allen High School.



FOR LEASE

Medical | Professional Office

The Asher

Downtown Allen District
400 N. Allen Drive | Allen, TX 75013



HIGHLIGHTS

- Renovated common areas and suites
- Turnkey, move-in ready units
- Tenant allowance for shell units
- Community lounge featuring private phone pod rooms
- Community and in-suite bathrooms
- Fiber-ready suites
- 24-hour building access
- Garage parking available
- Storage units available

2024
renovated

3
floors

46,350
building SF

15,540
floor SF

1,100-
8,000
SF suites

4:1,000
parking

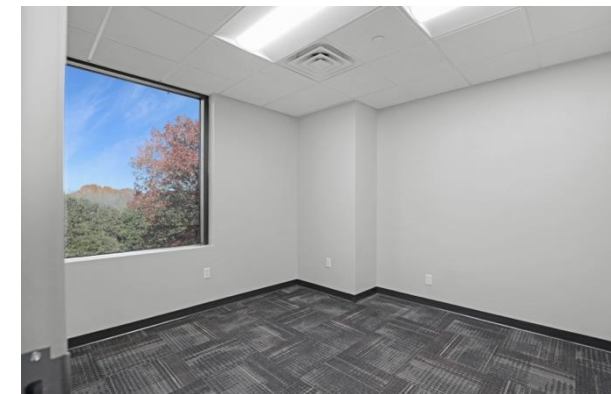
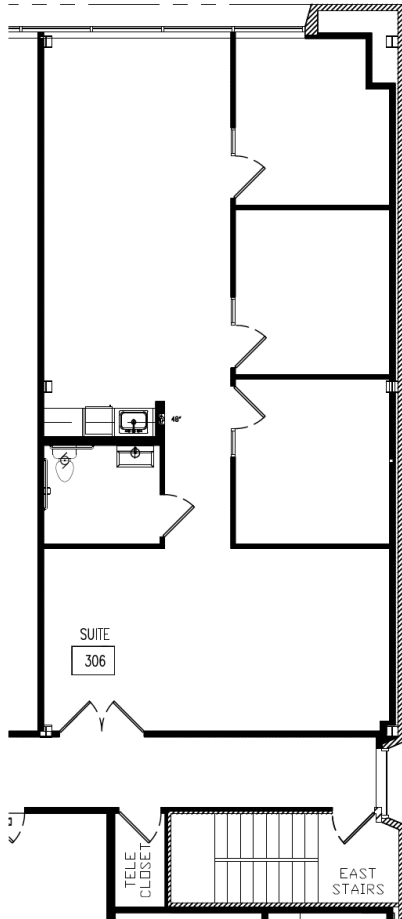


FOR LEASE

Medical | Professional Office

The Asher

Downtown Allen District
400 N. Allen Drive | Allen, TX 75013



MOVE-IN READY SUITE



Contact John Scott: 972-523-0799 | John@GillettCommerical.com

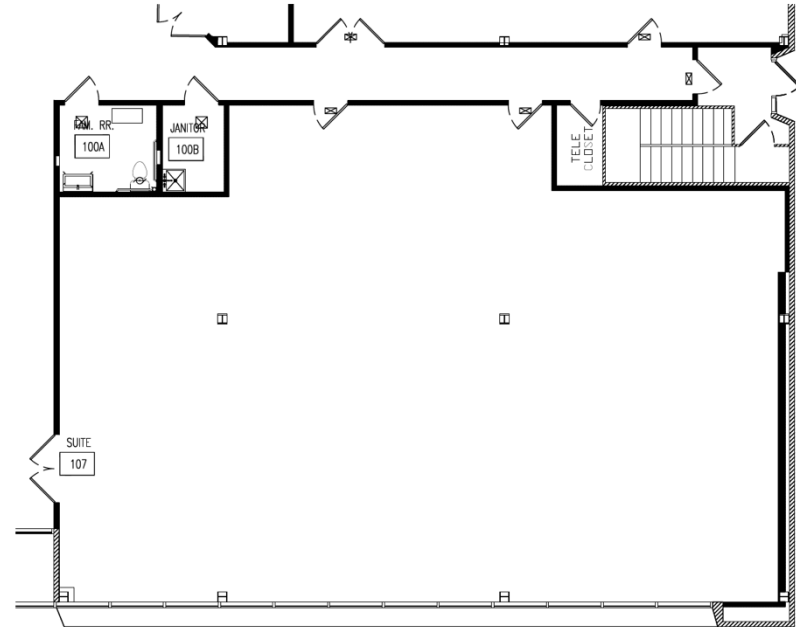
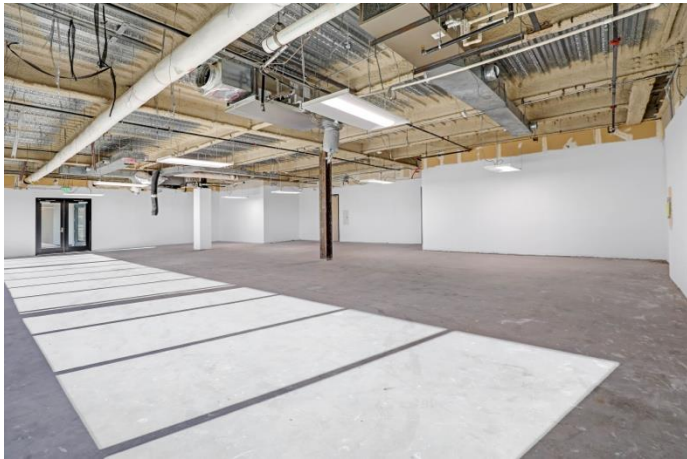
SAMPLE UNIT

FOR LEASE

Medical | Professional Office

The Asher

Downtown Allen District
400 N. Allen Drive | Allen, TX 75013



SHELL SUITE



FOR LEASE

Medical | Professional Office

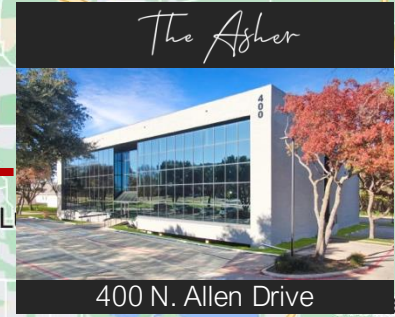
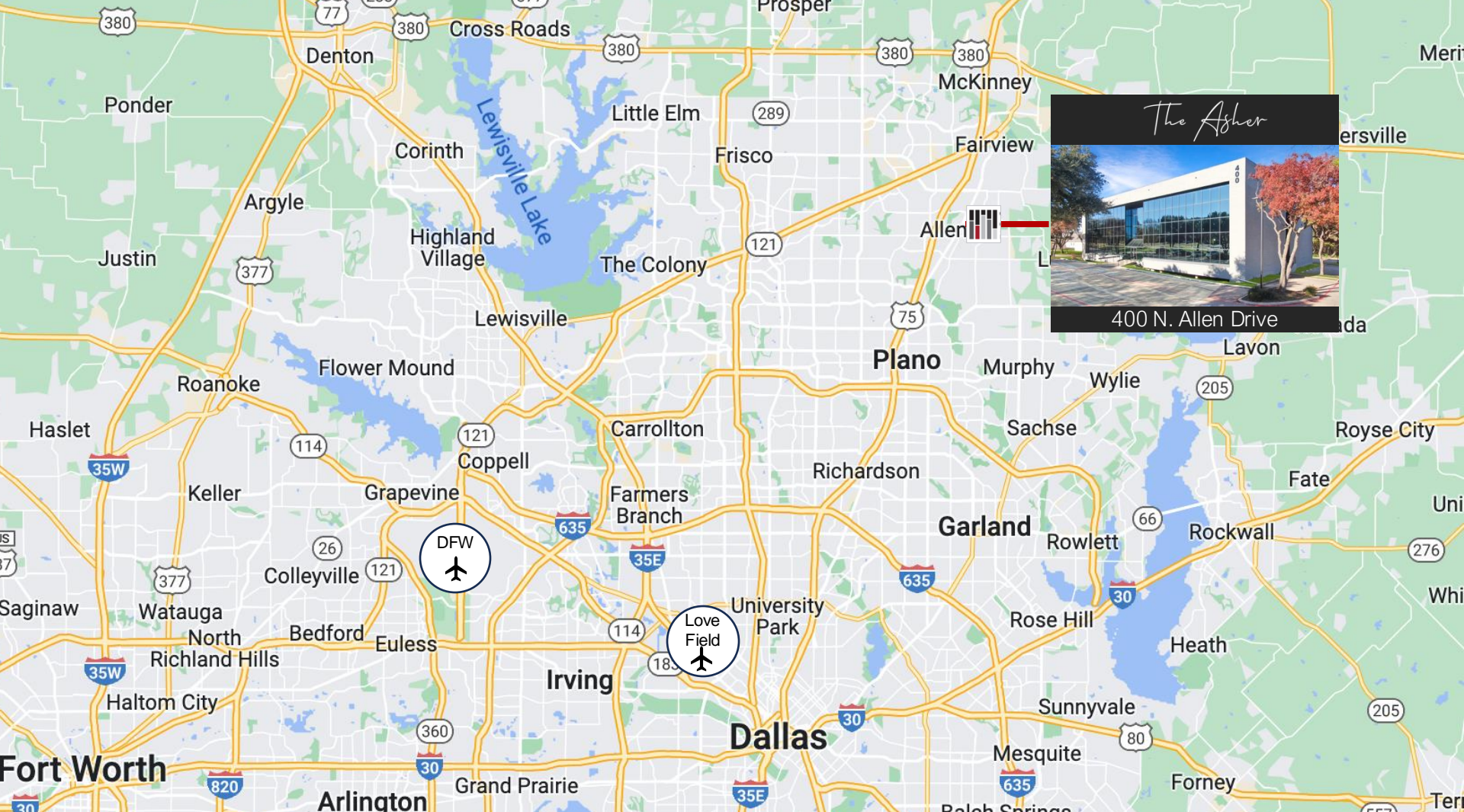
The Asher

Downtown Allen District
400 N. Allen Drive | Allen, TX 75013



Contact John Scott: 972-523-0799 | John@GillettCommerical.com

BUILDING PICTURES



JOHN SCOTT

972-523-0799

John@GillettCommercial.com



GILLETT COMMERCIAL

BUCKY GILLETT

949-422-7227

Bucky@GillettCommercial.com

FOR LEASE | 46,350 TOTAL SF | ALLEN, TX 75013

INFORMATION ABOUT BROKERAGE SERVICES LINK
<https://www.trec.texas.gov/forms/information-about-brokerage-services>